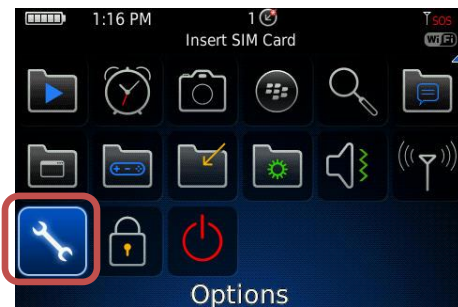


Note: This guide is for use with a BlackBerry 9000 mobile device and BlackBerry Desktop Software version 6.1.0.35. Other BlackBerry devices and software may function in a similar fashion.

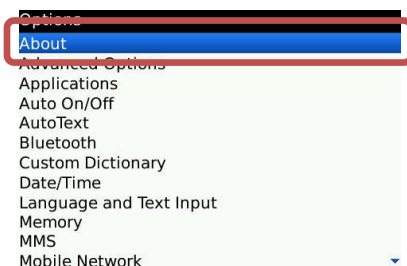
1.0 Check Firmware Versions

In order to connect to UoA-WiFi, you need to be running sufficiently up-to-date firmware.

To check the version of your firmware, press the physical menu button on your BlackBerry to bring up the main menu. From the menu, select '**Options**':



From the Options list, select 'About':



On the resulting list, check that beneath 'smartphone', you are running at least **v5.0.0.681**, and that your WLAN version is at least **3.0.0.113**.

If they are, proceed to step 2. Otherwise, you will need to update your firmware as detailed in step 1.1 below.

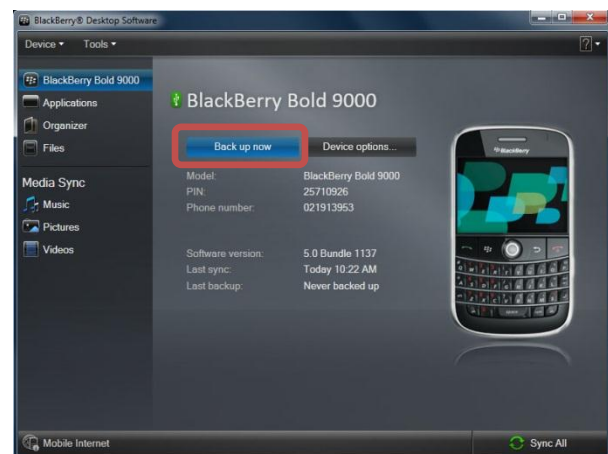
1.1 Update Firmware Version

You will need a computer running the BlackBerry Desktop Software (at least version 5.x) in order to update your BlackBerry firmware.

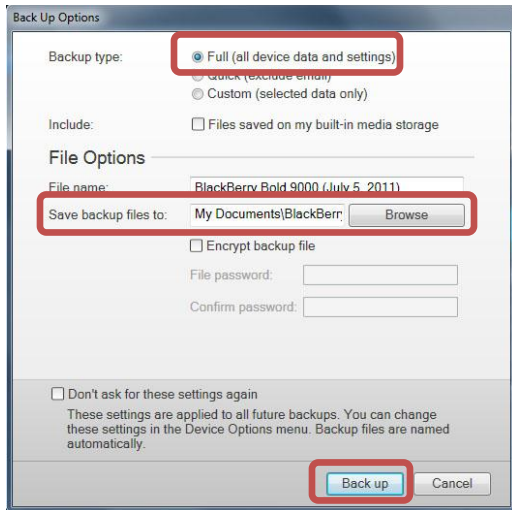
If you do not already have this installed, you can download it onto your computer from <http://blackberry.com>.

Connect your BlackBerry to your computer and start the BlackBerry Desktop Software program.

To be on the safe side, you should backup your BlackBerry settings. To do this, click on the '**Back up now**' button on the BlackBerry Desktop Software window:



On the window that pops up, select '**Full**' for 'Backup type'. Next, click the 'Browse' tab to select the folder where you will back up your files, then click on '**Back Up**':



Once the backup is made, you can proceed safely with a clean install of the BlackBerry firmware. You can download the approved up-to-date firmware by selecting your BlackBerry's service provider from the list at: http://us.blackberry.com/support/downloads/download_sites.jsp

Once you have downloaded the firmware, close the BlackBerry Desktop Software, then double-click on the downloaded firmware package to run it. It will automatically self-extract onto the computer.

After this process completes, start the BlackBerry Desktop Software again. Click on '**Device**', then '**Update**':

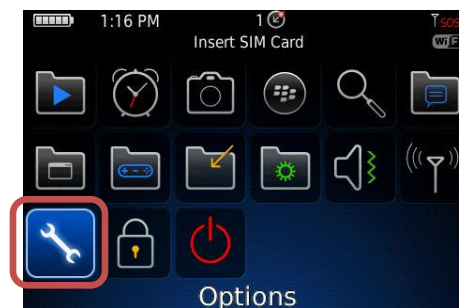


If a newer firmware version is available, you will then be able to install it onto your BlackBerry.

2.0 Check Security Certificate

The UoA-WiFi network requires you to have a specific security certificate installed.

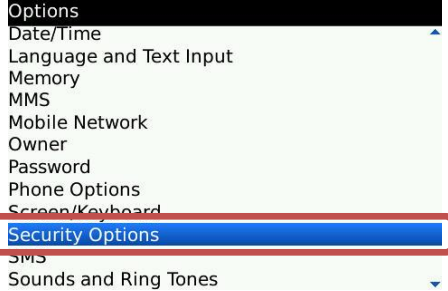
To check if you have this certificate installed already, press the physical menu button on your BlackBerry to bring up the main menu. From the menu, select '**Options**':



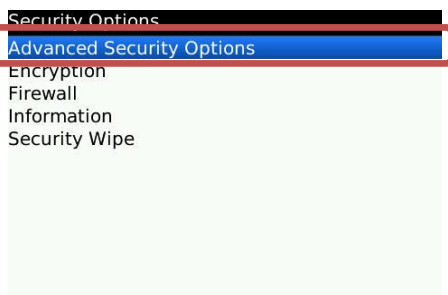
UoA-WiFi wireless setup

For BlackBerry 9000 mobile device

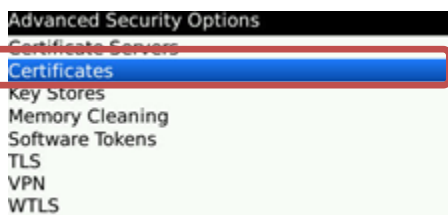
In the 'options' menu, click on '**Security Options**':



In the 'security options' menu, click on '**Advanced Security Options**':



In the 'Advanced Security Options' menu, click on '**Certificates**':



A list of certificates will display. Check to see if it contains the certificate called 'AddTrust External CA Root Certificate'. If it does, then proceed to step 3. If it does not, you will need to install the certificate.

2.1 Install Security Certificate

Use your PC to download the security certificate from the following URL:

<http://www.auckland.ac.nz/webdav/site/central/shared/for/current-students/student-it-essentials/wireless-network/documents/AddTrustExternal%20CA%20Root.cer>

Save this certificate file onto your computer and remember where you saved it to. Next, ensure that your BlackBerry is connected to the PC, and start the BlackBerry Desktop Software.

You will need to enable the viewing of Certificates on the BlackBerry Desktop Software.

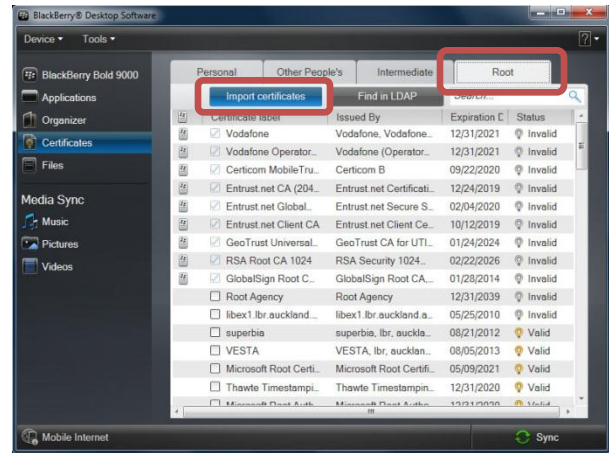
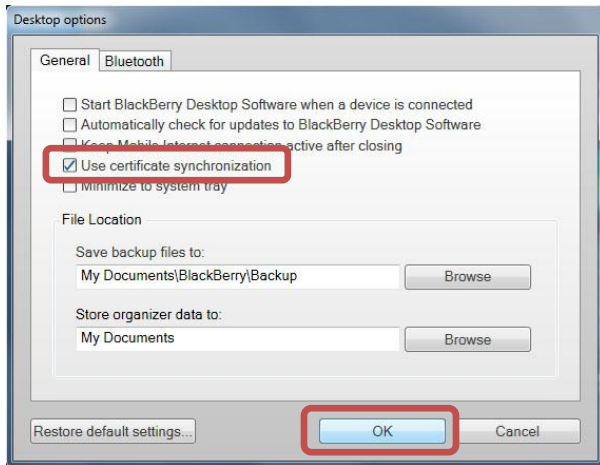
To do this, select 'Tools', then 'Desktop options':



On the 'Desktop options' menu, make sure that '**Use certificate synchronization**' is ticked. Then click on '**Ok**':

UoA-WiFi wireless setup

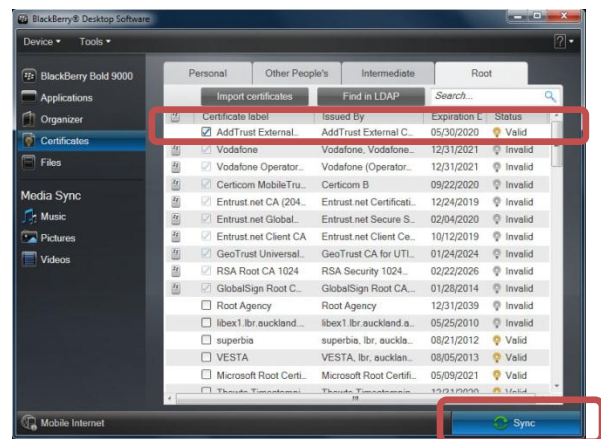
For BlackBerry 9000 mobile device



Now click on the 'Certificates' icon on the BlackBerry Desktop Software window:



Next, navigate to where you saved the certificate file, select the file, and click open to add the certificate to your list of root certificates. Now find the new 'AddTrust External CA Root Certificate' entry in the list and tick it (you may need to scroll down to find it). Then click on 'Sync':



Click on the 'Root' tab, then select 'Import Certificates':

Once the process is complete, the security certificate should be installed on your BlackBerry – repeat Step 2 to ensure the installation has been successful.

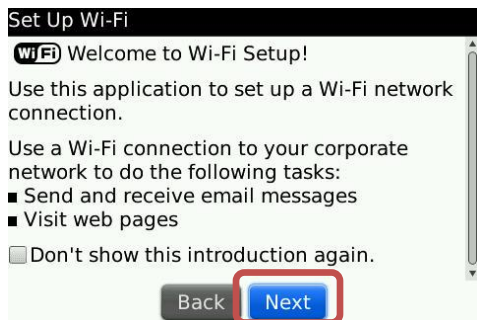
3.0 Set Up UoA-WiFi

To check the version of your firmware, press the physical menu button on your BlackBerry to bring up the main menu.

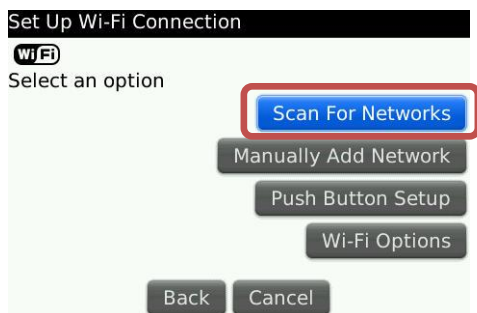
From the menu, select 'Manage Connections':



Select 'Set Up Wi-Fi Network' on the new window that pops up, then click on 'Next':



Now select 'Scan For Networks':



Find and select the network named 'UoA-WiFi':



You will now need to set up the network correctly per the following window. For 'User name' and 'User password', use your UoA NetID and password. When the settings are correct, click 'Connect':



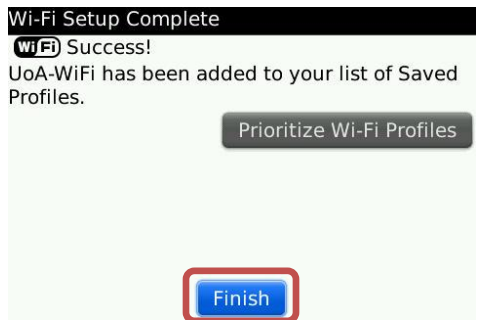
Once the connection is successful, you'll be asked if you want to save the network. Name the network whatever you would like, then click on 'Next':

UoA-WiFi wireless setup

For BlackBerry 9000 mobile device



Now select '**Finish**' to complete the setup:



UoA-WiFi should now be connected and you should be able to use your BlackBerry browser to access the internet.