

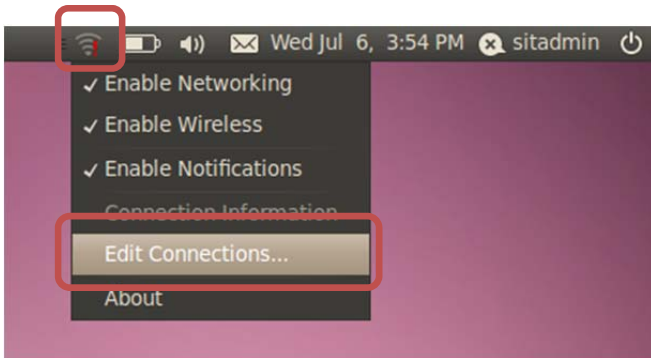
UoA-WiFi wireless setup

For Linux (Ubuntu) using Gnome Network Manager

Note: This guide is for use with Linux operating systems using Gnome Network Manager. These steps have been tested under Ubuntu 10.x and 11.x.

1. Create a new network connection

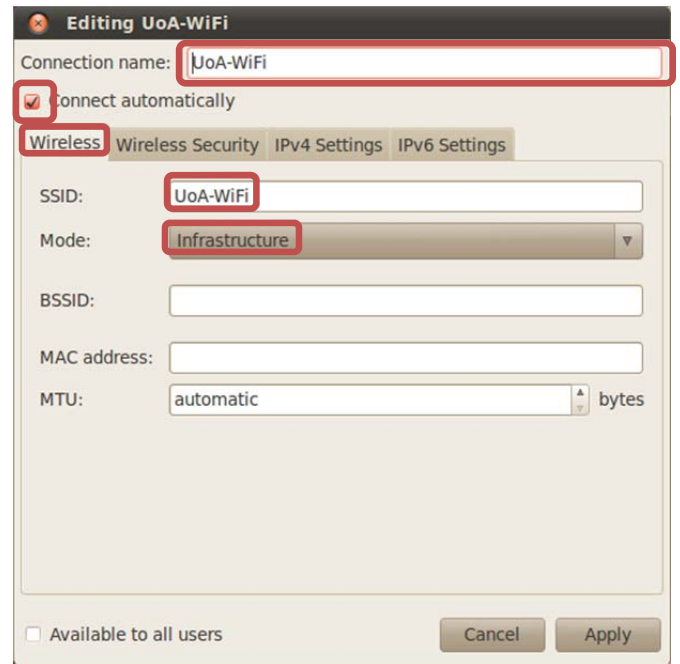
First, click the 'Network' icon on the menu bar, then select 'Edit Connections...':



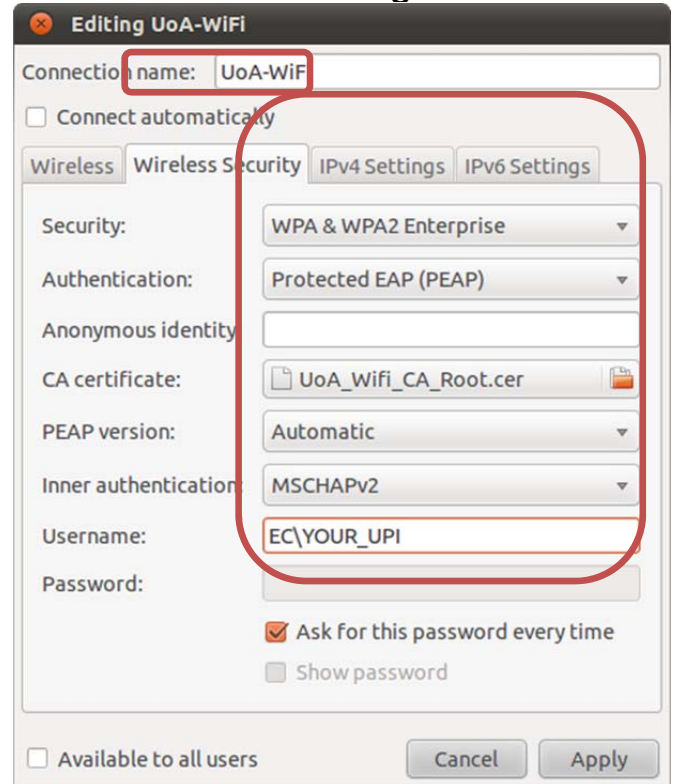
You should now see the 'Network Connections' window. Click on the 'Wireless' tab, and select 'Add':



In the next window, the 'Connection name' should be 'UoA WiFi' and the 'Connect automatically' box must be ticked. In the 'Wireless' tab, the SSID must be 'UoA-WiFi' and the 'Mode:' must be 'Infrastructure':



The following screen shot displays the settings for the 'Wireless Security' tab. Choose the 'same settings':



2. Accepting the Security Certificate

The CA certificate can be downloaded from the following URL:

<http://www.auckland.ac.nz/uoa/cs-wireless-network/?#s3c2>. Next, click on the link: [AddTrustExternal CA Root Certificate](#), and **save** the file on your computer.



Next, in the 'Editing UoA-WiFi' window, click on '**Apply**':



You should now be able to connect to UoA-WiFi and browse the internet.

3. Trouble shooting

Username: If you cannot connect to UoA-WiFi using "EC\" in front of your "UPI", some users have reported that they can login with their UPI (NetID) only.

Inner authentication: If you cannot connect to UoA-WiFi when MSCHAPv2 is enabled, some users have reported that they can connect when it is disabled.

Alternative network connection: Instead of setting up a new connection, you can also modify an automatically detected network.