

UoA-WiFi wireless setup

For Mac OS X using the built-in Airport card and Safari

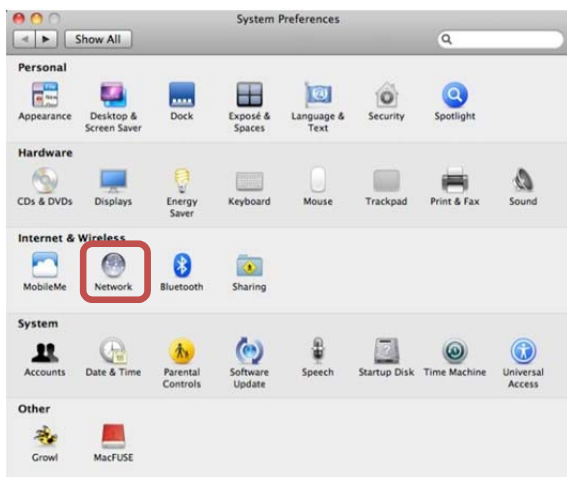
Note: This guide is for use with Mac OS X 10.6 (Snow Leopard) using built-in Airport card and Safari.

1. Set up a new location

First, click on the **'Apple'** icon on the left side of the menu bar, then select **'System Preferences'**:



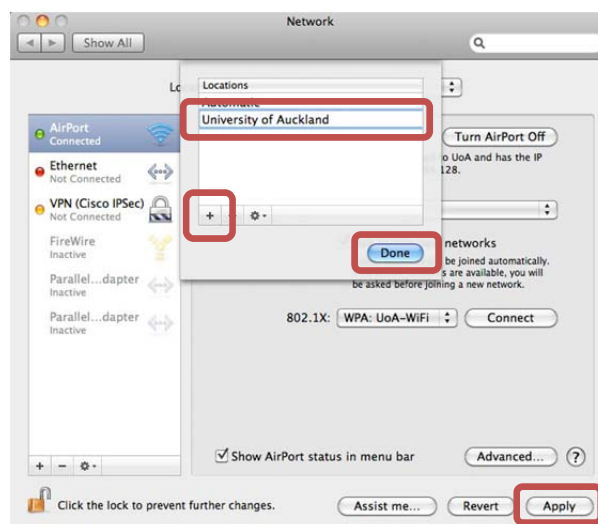
You should now see the 'System Preferences' window. Click on **'Network'**:



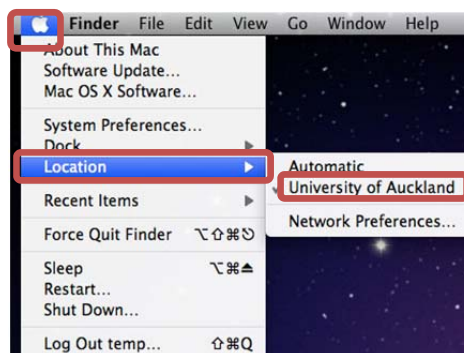
You should now see the 'Network' window. Click on the 'Location' drop-down menu, then select, **'Edit Locations...'**:



To add a new location, Click on the **'+'** icon, type "University of Auckland", click **'Done'** then click **'Apply'**:



When connecting to the UoA-WiFi network, you can check that this network is selected by clicking the **'Apple'** icon then selecting **'Location'** from the drop-down menu:



UoA-WiFi wireless setup

For Mac OS X using the built-in Airport card and Safari

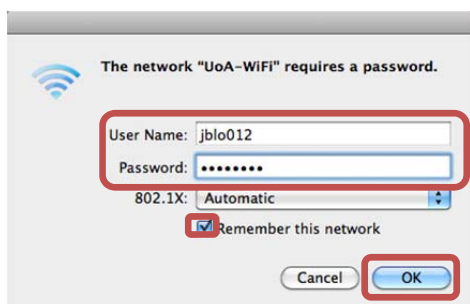
2. Connecting to UoA-WiFi

First, click on the **'Airport'** icon at the top right of the menu bar, then select **'UoA-WiFi'**:



Note: If you don't see any available networks, check that your Airport is turned On. This is done by clicking on the greyed-out Airport menu then selecting 'Turn Airport On'.

You will next be prompted to log in. Type in your UoA **NetID** and **Password** in the boxes provided, then Click **'OK'**:



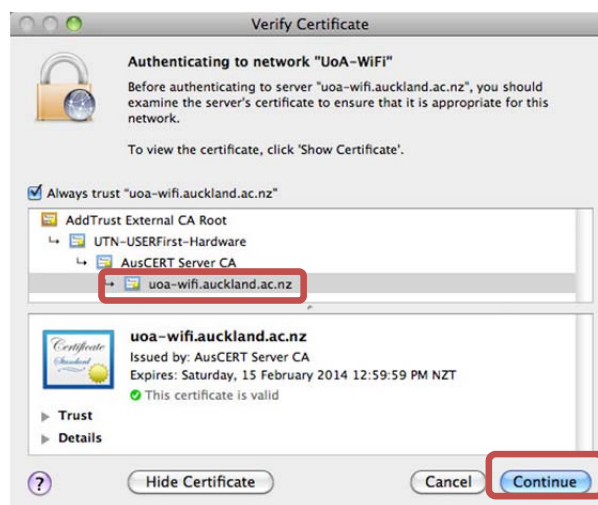
If you also tick **'Remember this network'**, then you will not need to enter your login details again when using the UoA-WiFi network.

3. Accepting the Security Certificate

You may be asked if you wish to accept the security certificate. Click on **'Show Certificate'** to see the details:



Check that the certificate is issued from **uoa-wifi.auckland.ac.nz**. If it is, click **'Continue'** to accept the certificate:



Note: You may also be prompted to enter your administrator username and password to accept the certificate.

You only need to accept the security certificate the first time you connect.

4. Browsing the internet

First, check that your location is set to UoA-WiFi. When connecting to the UoA-WiFi network, you can check that this network is selected by clicking the **'Apple'** icon then **'Location'** from the drop-down menu:

First, check that your **Location** is set to **University of Auckland**. Next, click on the **Airport** icon on the right side of your menu bar, then click on the **UoA-WiFi** network.

UoA-WiFi wireless setup

For Mac OS X using the built-in Airport card and Safari


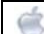
You can now open your internet browser of choice to access both University and non-University websites.

To set up fast-speed browsing for non-University sites, you will need to **set up NetLogin**.

i. Download NetLogin

First, you will need to download the NetLogin client. This programme is free and is available from the following link:
<http://ec.auckland.ac.nz/software.htm>

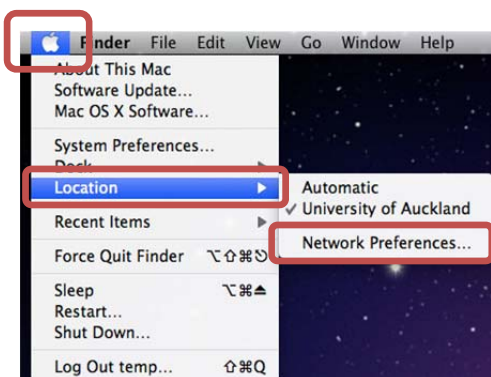
For Safari, download the application for **'Mac OS X (Universal Binary)'**:

OS	Version
	Mac - OS X
	Mac OS X (Universal Binary)

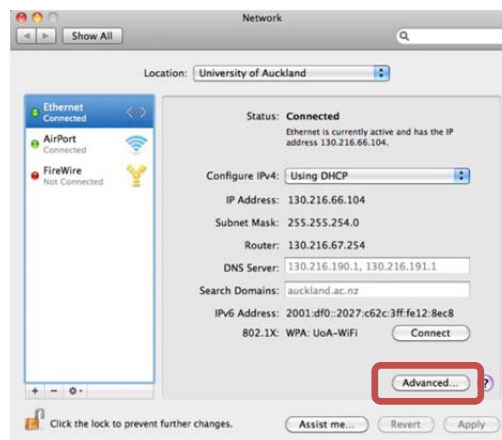
You will need to save this application to a location of your choosing.

ii. Set Up Proxy Address

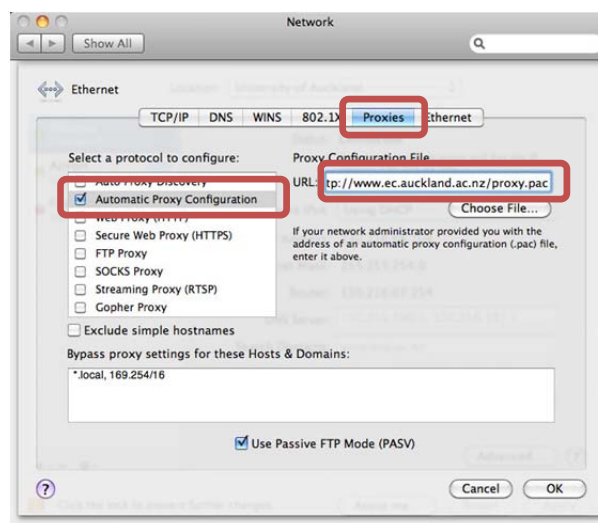
First, click on the **'Apple'** icon on the left side of the menu bar, then select **'Location'** and click on **'Network Preferences...'**:



You should now see the 'Network' window. Click on **'Advanced'**:



Another 'Network' window will open. Click the **'Proxies'** tab, then tick **'Automatic Proxy Configuration'**. In the URL field, type the following address:
<http://www.ec.auckland.ac.nz/proxy.pac>



Click **'OK'**, then **'Apply'** Insert screen shot

iii. Run NetLogin

To use NetLogin, first make sure you are using the University of Auckland location and are connected to the UoA-WiFi wireless network. Next **double-click on NetLogin** and **sign in**.

You should now be able to browse UoA-WiFi at full speed.

UoA-WiFi wireless setup

For Mac OS X using the built-in Airport card and Safari

Note 1: If you later want to use the default wireless again, or the proxy settings are

causing issues with other Wireless networks that you use, just click on the Apple icon, click on Location, then select a different Location.

From now on, whenever you select the 'University of Auckland' Location, you will be able to use NetLogin with Safari for full-speed browsing, and when you select another Location, you will be use the default wireless service.

Note 2: *These instructions only detail how to set up the Proxy for fast-speed browsing on Safari. If you wish to use NetLogin with another browser, you will also need to set up the Proxy address in that browser.*