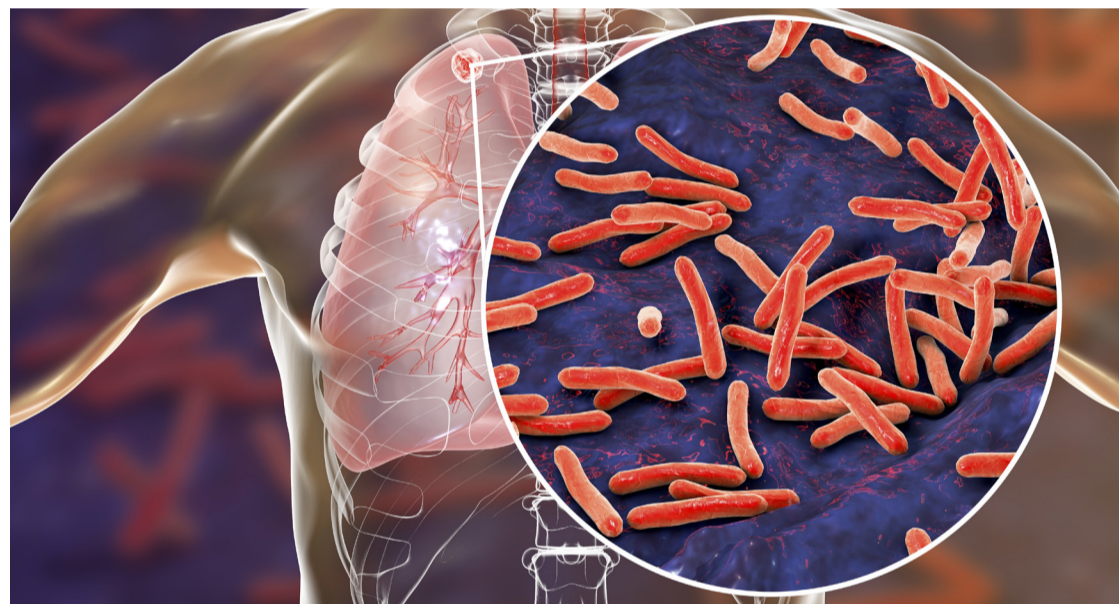
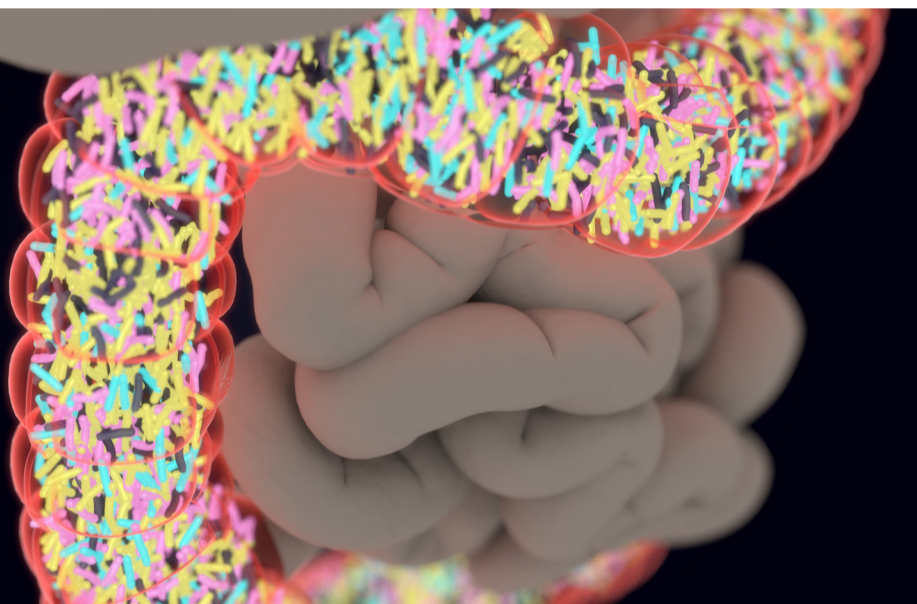




Join our world-leading team driving the latest advances in animal and microbiome research



Our research has the potential to change the world - join the team and help us make a difference. Our work cover a range of fields:

- Methanogenesis in cattle gut and colon
- Rumen biomechanics and microbiome research
- Invivo and wearable sensors for precision live stock farming
- Physiological models to investigate microbial biogeography in the gut

To find out more contact r.jagir@auckland.ac.nz
or visit www.abi.auckland.ac.nz



THE UNIVERSITY OF
AUCKLAND
Te Whare Wānanga o Tāmaki Makaurau
NEW ZEALAND

**AUCKLAND
BIOENGINEERING
INSTITUTE**