

Waipapa Taumata Rau Demographics 2024

This document provides information about the diverse characteristics of students and staff at Waipapa Taumata Rau, The University of Auckland.

Overview of 2024

Undergraduate and postgraduate students predominantly identify as women, with the most commonly identified ethnic group being Asian for undergraduate and postgraduate students.

Academic and professional staff predominantly identify as women, with the most commonly identified ethnic group being Pākehā/European for academic and professional staff.

Senior academic and professional staff predominantly identify themselves as Pākehā or belonging to a European ethnic group. Senior academic staff predominantly identify themselves as men, and senior professional staff predominantly identify as women.

These broad characteristics have been stable since 2021.

Contents

Overview of 2024	1
Key trends for 2021-2024	3
Student community	3
Staff Community.....	3
Notes on Data.....	4
University Community	6
Staff and Student Overview.....	6
Student Community	10
Students by level of Study	10
Student Retention	14
Qualification Completions at Undergraduate and Postgraduate level.....	16
Staff Community.....	20
Staff by Academic or Professional	20
Professional Staff Bands.....	24
Academic Roles.....	25

List of Tables and Figures

Table 1: Total Staff and Total Student Demographics for 2024.....	6
Table 2: Student Demographics by Level of Study.....	10
Table 3: Student Retention by Demographic in 2024.	14
Table 4: Qualification Completions by Demographic in 2024.....	16
Table 5: Academic and Professional Staff by Demographic in 2024.....	20
Table 6: Professional Staff Bands by Demographic Characteristics in 2024.....	24
Table 7: Traditional Academic Roles in 2024.	25
Table 8: Academic Research and Teaching Roles in 2024.	26
Table 8: Other Academic Roles in 2024.....	27
Figure 1: Staff and Student Demographics from 2021-2024	7
Figure 2: Staff and Student Demographics from 2021-2024.....	8
Figure 3: Staff and Student Demographics from 2021-2024.....	9
Figure 4: Student Demographics by Level of Study from 2021-2024 by Ethnicity.....	11
Figure 5: Student Demographics by Level of Study from 2021-2024 by Gender.....	12
Figure 6: Student Demographics by Level of Study from 2021-2024 by Community	13
Figure 7: Student Retention from Previous year by Demographic Group.	15
Figure 8: Qualification Completions by Level of Study from 2021-2024 by Ethnicity	17
Figure 9: Qualification Completions by Level of Study from 2021-2024 by Gender	18
Figure 10: Qualification Completions by Level of Study from 2021-2024 by Community	19
Figure 11: Academic and Professional Staff Ethnicity Demographics from 2021-2024	21
Figure 11: Academic and Professional Staff Gender Demographics from 2021-2024.....	22
Figure 11: Academic and Professional Staff Community Demographics from 2021-2024	23

Key trends for 2021-2024

Waipapa Taumata Rau is experiencing gradual shifts in the demographic composition of student and staff communities.

Student community

Shifts in the composition of the student community are mainly driven by undergraduate students as undergraduate students make up the majority (69%) of students at the University. Since 2021 there have been

Increases in the percentages of students who

- Belong to an Asian ethnic group
- Experience disability
- Belong to the Rainbow community
- Have refugee backgrounds
- Are men

Decreases in the percentages of students who

- Belong to a Pākehā/European ethnic group
- Have low socioeconomic backgrounds
- Are women

Between 2021 and 2024 student retention tended to drop and then increase again for each demographic category. In 2024 student retention was 88% overall, however there were two categories with lower retention of 81%. These are students with a low socioeconomic background, and students with a gender identity other than woman or man.

Staff Community

Since 2021, there have been

Increases in the percentages of staff who

- Are Māori
- Belong to an Asian ethnic group
- Are women
- Experience disability
- Belong to the Rainbow community

Decreases in the percentages of staff who

- Belong to a Pākehā/European ethnic group
- Belong to an "other" ethnic group or do not say which ethnic groups they identify with
- Are men

Notes on Data

Data are accurate as of June 23rd, 2025. Census data are presented for all measures, reflecting the number of people in each group.

It is possible for an individual to be a staff member and a student. In these cases, they are counted in both categories.

Similarly, the demographic groups are not exclusive of one another. Individuals are counted in each group they belong to. Within the Communities group, the sub-groups are also not exclusive of one another.

Inline with the [Methodological standard for confidentiality in the 2023 census guidelines](#), counts of less than 6 have been suppressed to keep individual information safe. In cases where these counts could be calculated using other values in the same table secondary suppression has been used. In this document this means the value for one or more other sub-groups in the same demographic has been replaced with a range.

Demographic groups

The following demographic groups are used throughout this document.

- Ethnicity (Prioritised)
 - *Categories: Māori ; Pacific; Asian; Middle Eastern, Latin American, and African; Pākehā/European; Other or did not say.*
 - Individuals appear in one category only, as defined by STATS NZ criteria.
 - Values within each ethnicity category should add to the value seen in the 'total' row.
 - The groups are presented in alphabetical order in the tables, and STATS NZ prioritised order in the legend of the figures.
- Gender
 - *Categories: Women, Men, Another gender or did not say.*
 - Individuals appear in one gender category only.
 - Values within gender should add to the value seen in the 'total' row.
 - The categories are presented in the order Women, Men, Another gender or did not say. This matches the largest to smallest counts and percentages from all columns in Table 1.
- Communities
 - *Groups: Disability, Refugee Background, Rainbow, Low Socioeconomic Background*
 - Individuals will appear in every community group that they identify with.
 - Values within the Communities group may not add to the value seen in the 'total' row and are not expected to.
 - Information for Socioeconomic background is available for students only, and not staff.

- Low socioeconomic background is based on the decile of the most recent secondary school that students had previously attended and necessarily excludes any students who did not attend secondary school in New Zealand.
- The community groups are presented in alphabetical order.

University Community

Staff and Student Overview

Table 1: Total Staff and Total Student Demographics for 2024.

Group	Category	Total Count	Total %	Student Count	Student %	Staff Count	Staff %
Overall	Total	60,538	100	47,443	100	13,095	100
Ethnicity	Asian	28,510	47	24,026	51	4,484	34
	Māori	4,342	7	3,228	7	1,114	9
	Middle Eastern, Latin American, and African	2,509	4	1,871	4	638	5
	Pacific	4,887	8	3,984	8	903	7
	Pākehā/European	19,332	32	13,699	29	5,633	43
	Other or did not say	958	2	635	1	323	2
Gender	Women	34,828	58	26,900	57	7,928	60
	Men	25,108	41	20,060	42	5,048	39
	Another gender or did not say	602	1	483	1	119	1
Communities	Disabled	5,668	9	4,713	10	955	7
	Rainbow	5,762	10	4,515	10	1,247	10
	Refugee background	1,307	2	1,135	2	172	1
	Low socioeconomic background	--	--	3,568	8	--	--

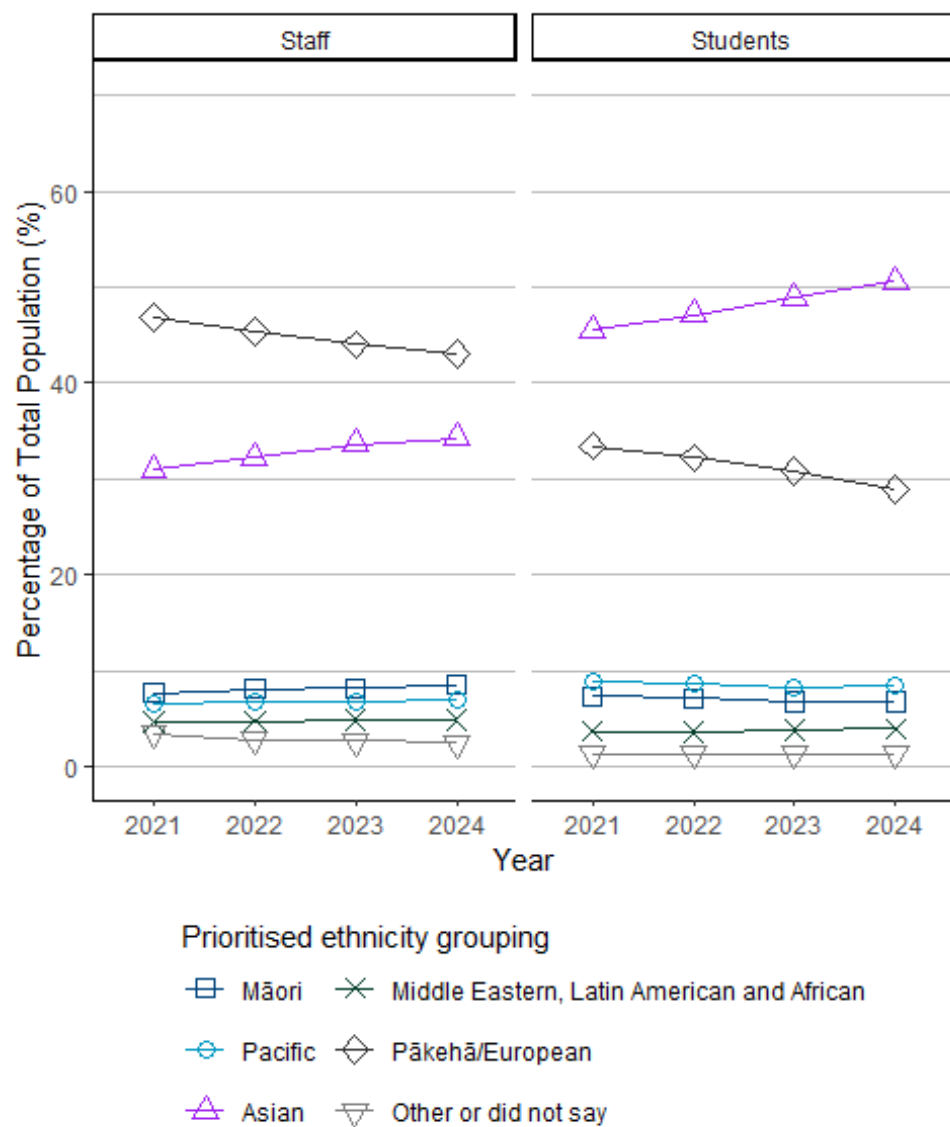


Figure 1: Staff and Student Demographics from 2021-2024.

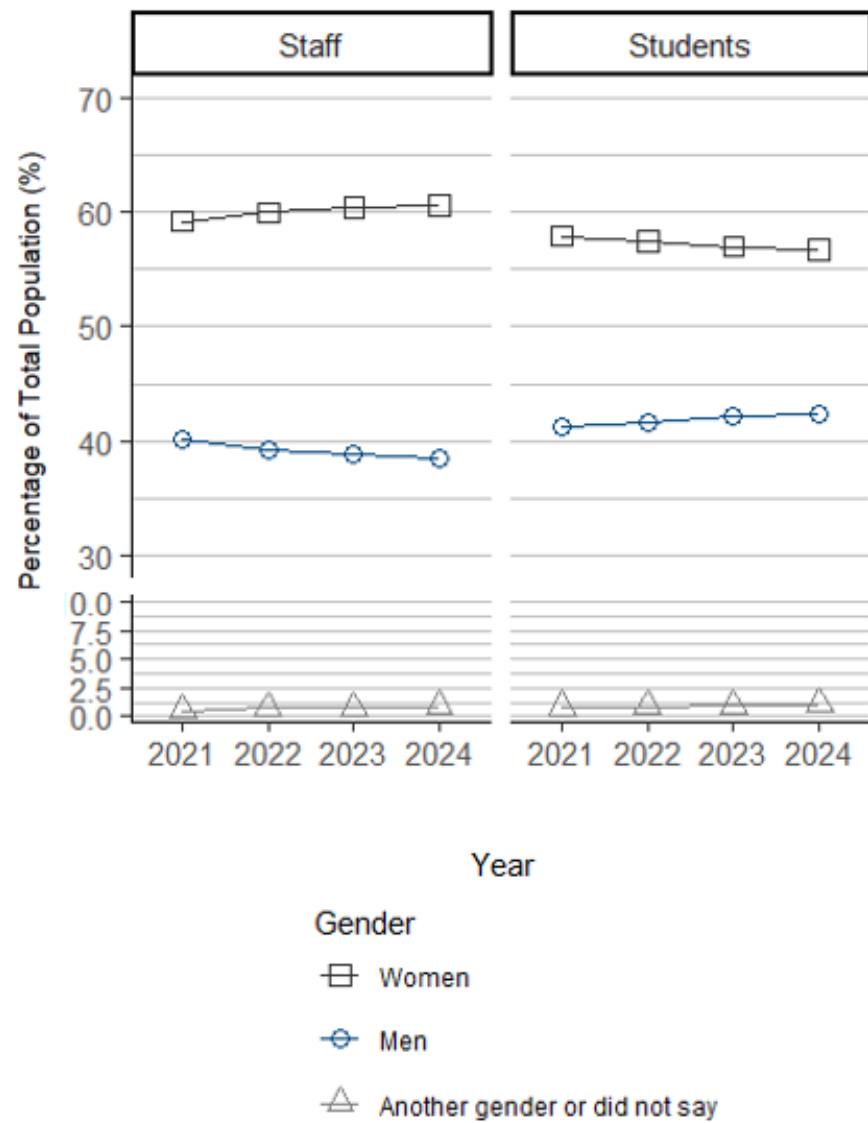


Figure 2: Staff and Student Demographics from 2021-2024.

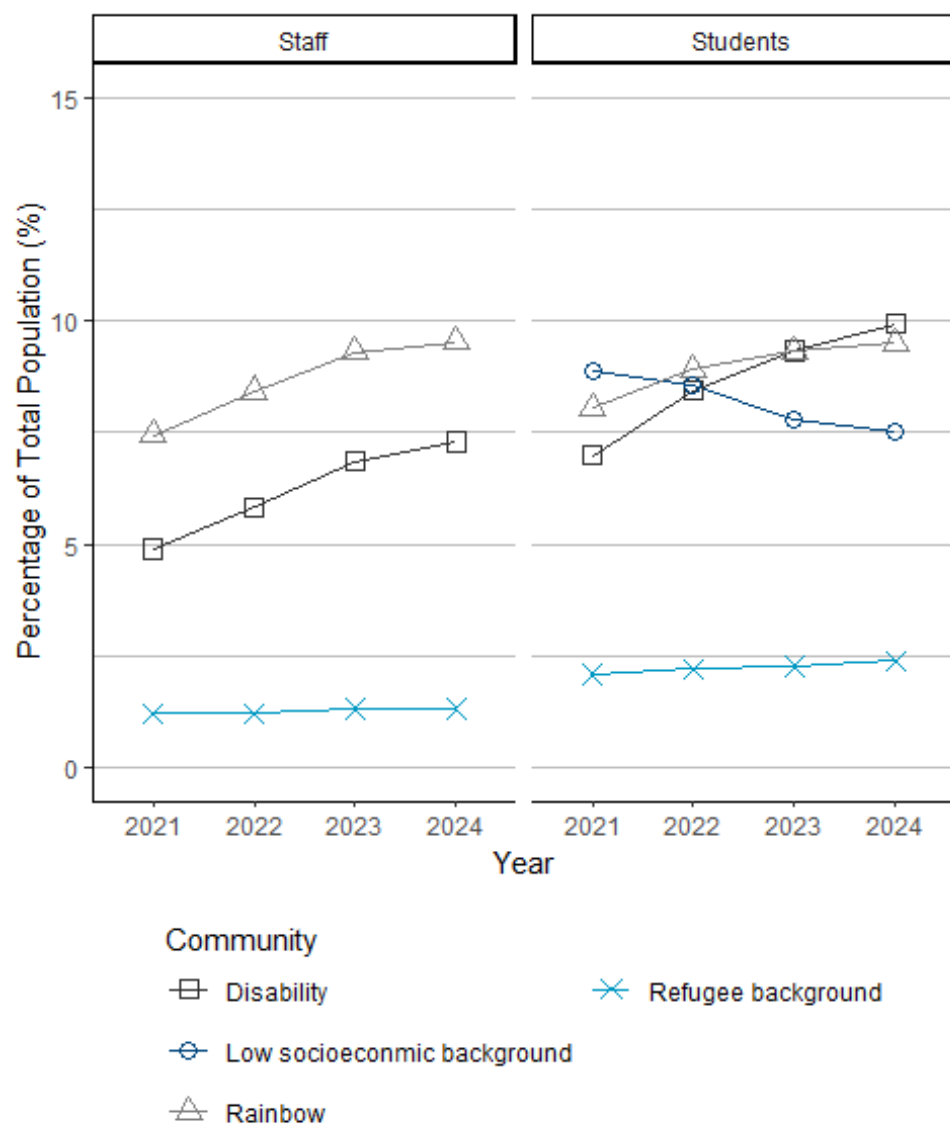


Figure 3: Staff and Student Demographics from 2021-2024.

Student Community

Students by level of Study

Table 2: Student Demographics by Level of Study.

Group	Category	Undergraduate		Taught Postgraduate		Research Postgraduate	
		Count	%	Count	%	Count	%
Overall	Total	32,674	100	13,257	100	3,981	100
Ethnicity	Asian	16,607	51	6,759	51	2,093	53
	Māori	2,269	7	831	6	223	6
	Middle Eastern, Latin American, and African	1,176	4	507	4	299	8
	Pacific	2,965	9	974	7	141	4
	Pākehā/European	9,254	28	4,004	30	1,144	29
	Other or did not say	403	1	182	1	81	2
Gender	Women	17,398	53	8,403	63	2,224	56
	Men	14,892	46	4,781	36	1,711	43
	Another gender or did not say	384	1	73	1	46	1
Communities	Disabled	3,759	12	826	6	311	8
	Rainbow	3,346	10	989	7	382	10
	Refugee background	962	3	185	1	48	1
	Low socioeconomic background	2,428	7	1,076	8	162	4

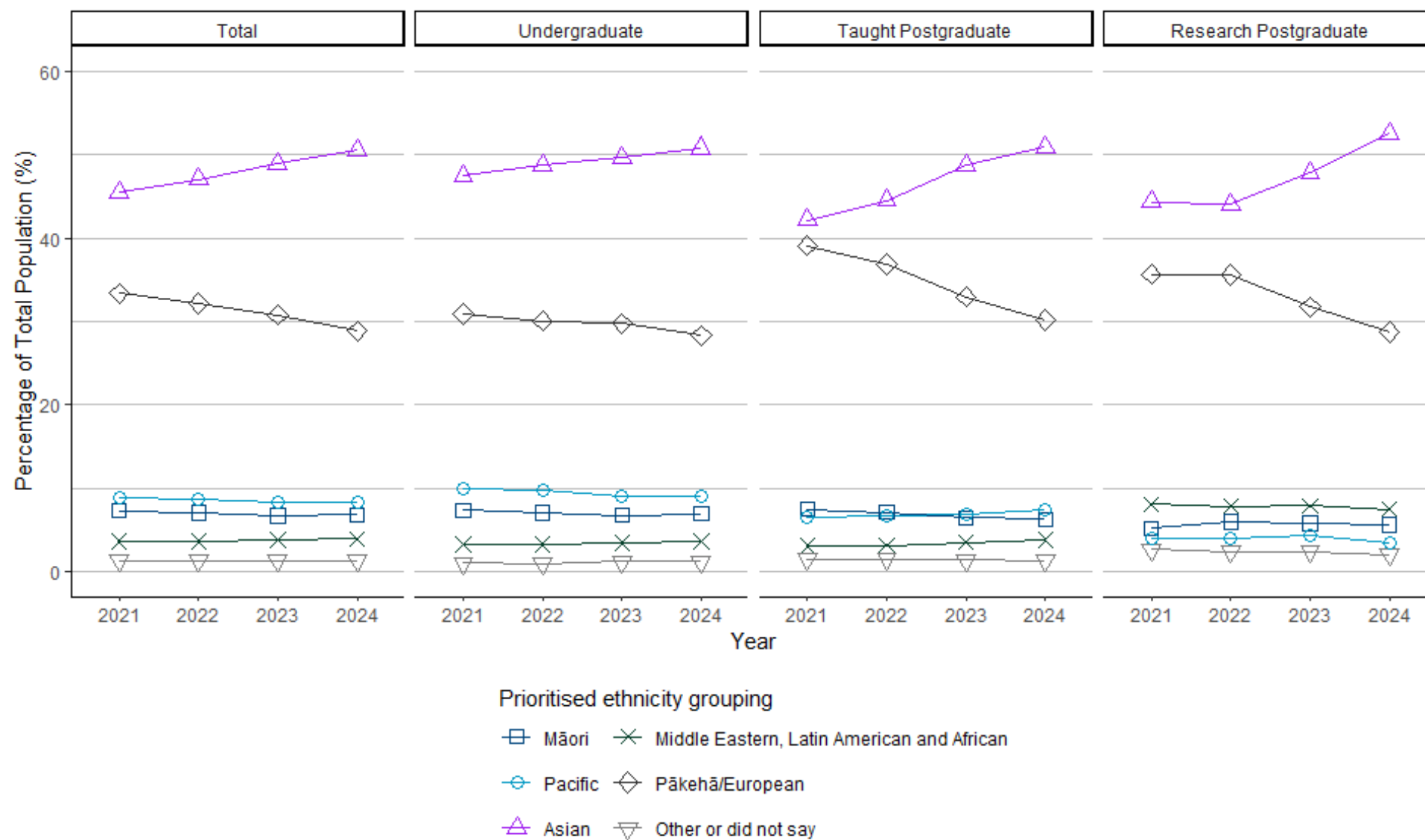


Figure 4: Student Demographics by Level of Study from 2021-2024 by Ethnicity.

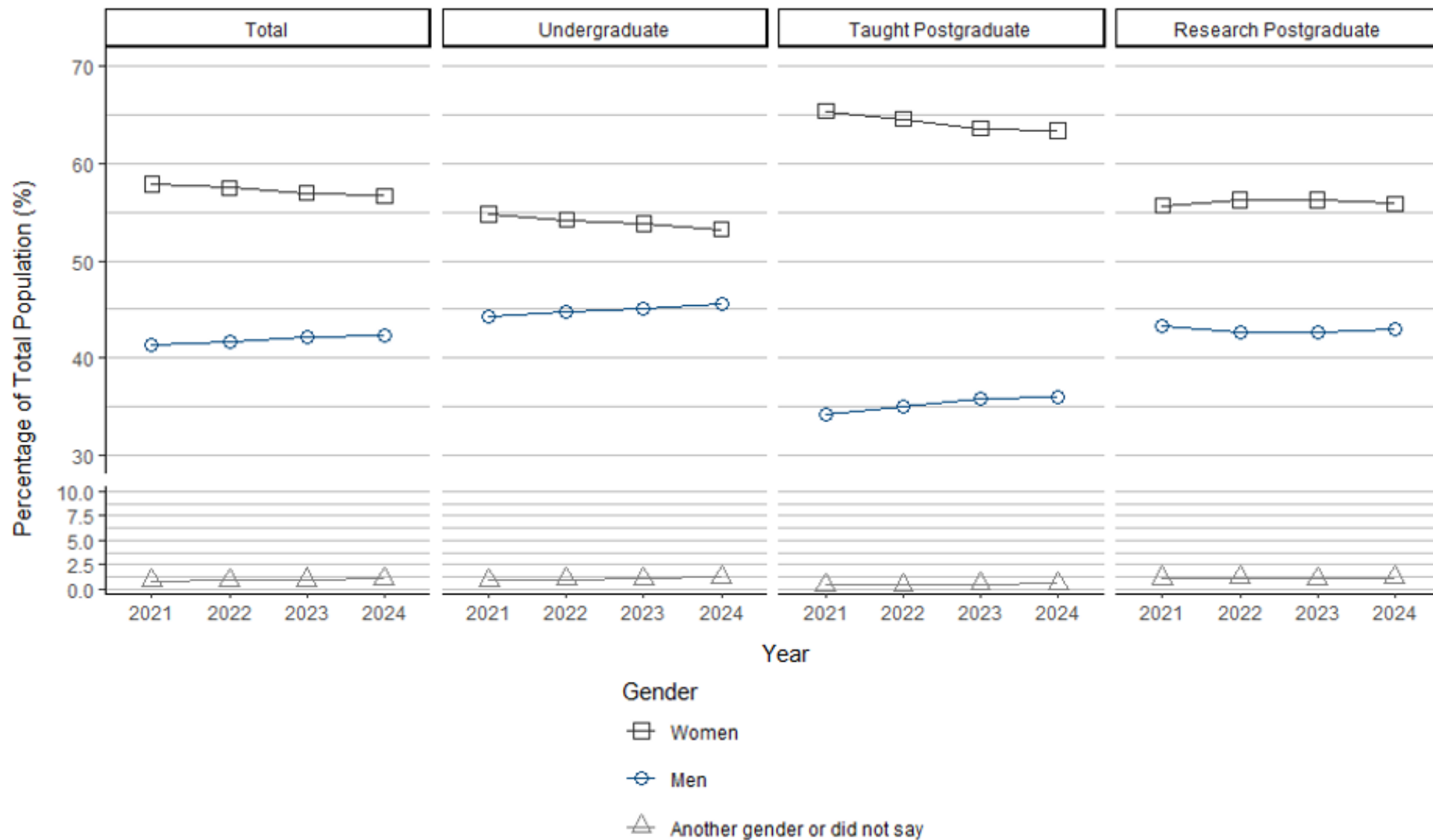


Figure 5: Student Demographics by Level of Study from 2021-2024 by Gender.

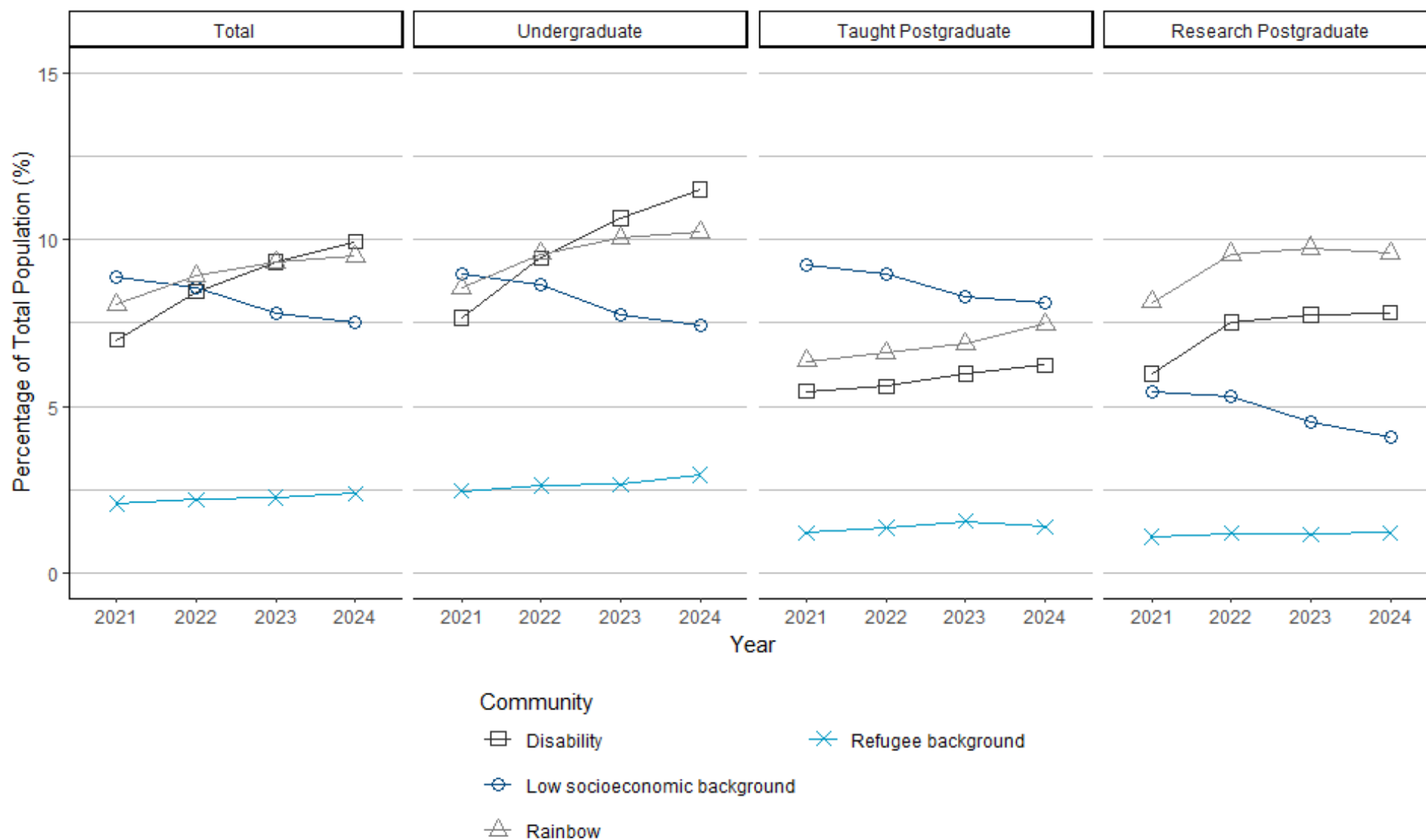


Figure 6: Student Demographics by Level of Study from 2021-2024 by Community.

Student Retention

Table 3: Student Retention by Demographic in 2024.

Group	Category	Count 2023	Count 2024	Retained %
Overall	Total	5,185	4,579	88
Ethnicity	Asian	2,567	2,331	91
	Māori	352	300	85
	Middle Eastern, Latin American, and African	157	135	86
	Pacific	406	345	85
	Pākehā/European	1,672	1,438	86
	Other or did not say	31	30	97
Gender	Women	2,642	2,334	88
	Men	2,484	2,197	88
	Another gender or did not say	59	48	81
Communities	Disabled	402	348	87
	Rainbow	495	431	87
	Refugee background	166	137	83
	Low socioeconomic background	382	311	81

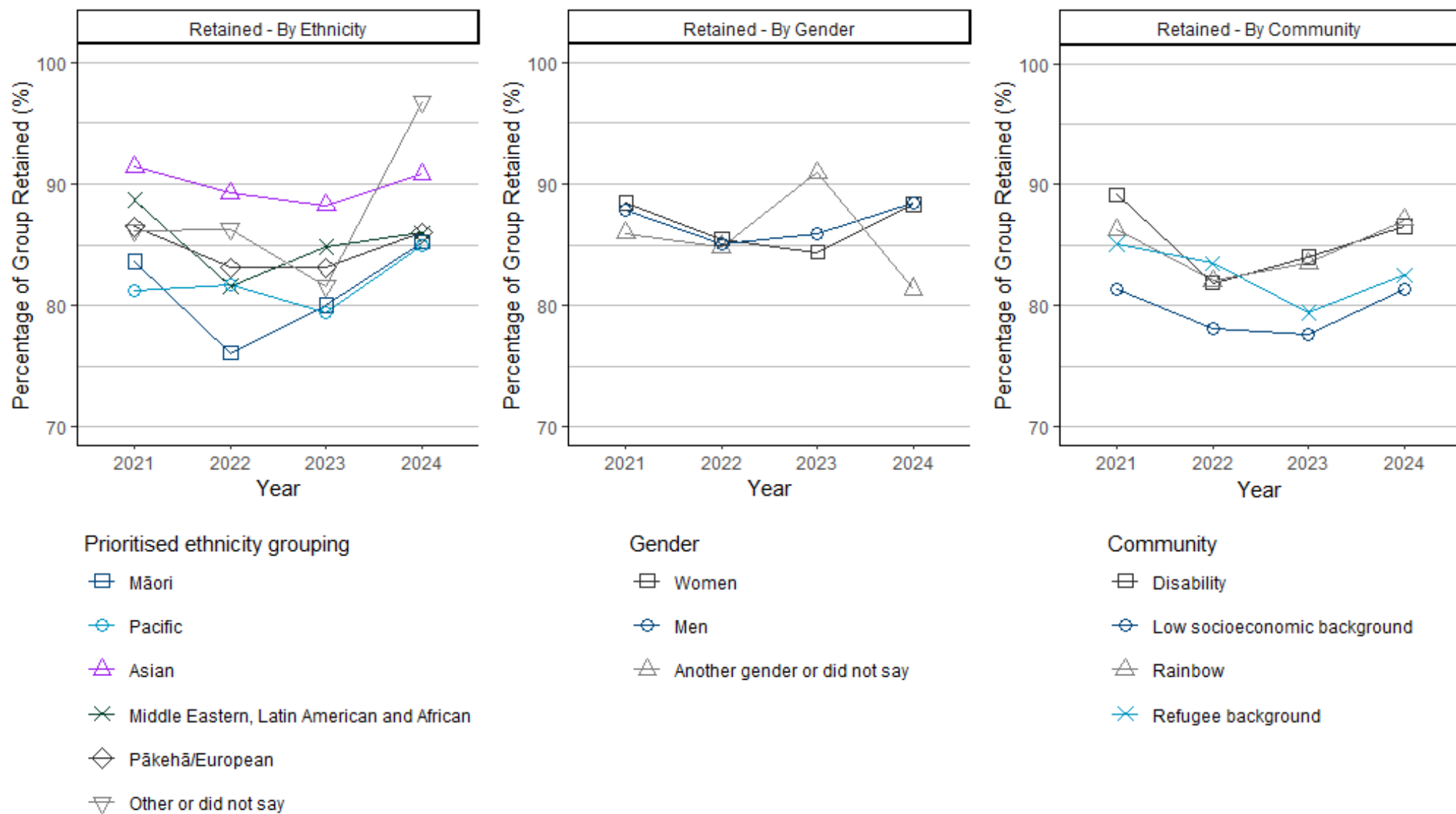


Figure 7: Student Retention from Previous year by Demographic Group.

Qualification Completions at Undergraduate and Postgraduate level

Table 4: Qualification Completions by Demographic in 2024.

Group	Category	Undergraduate		Postgraduate	
		Count	%	Count	%
Overall	Total	5,491	100	6,354	100
Ethnicity	Asian	2,731	50	3,357	53
	Māori	347	6	346	5
	Middle Eastern, Latin American, and African	187	3	275	4
	Pacific	406	7	377	6
	Pākehā/European	1,766	32	1,911	30
	Other or did not say	54	1	88	1
Gender	Women	3,345	61	3,857	61
	Men	2,089	38	2,460	39
	Another gender or did not say	57	1	37	1
Communities	Disabled	585	11	396	6
	Rainbow	608	11	481	8
	Refugee background	147	3	96	2
	Low socioeconomic background	388	7	451	7

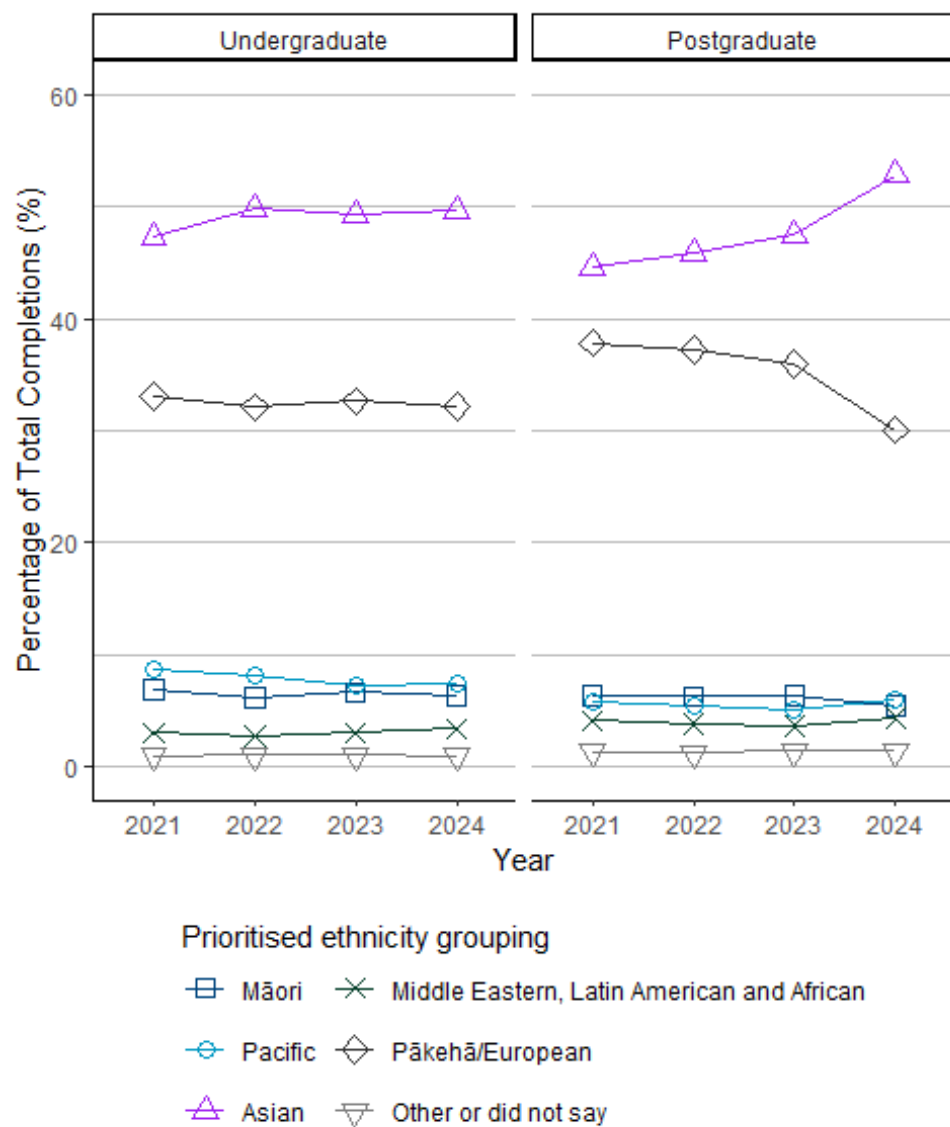


Figure 8: Qualification Completions by Level of Study from 2021-2024 by Ethnicity.

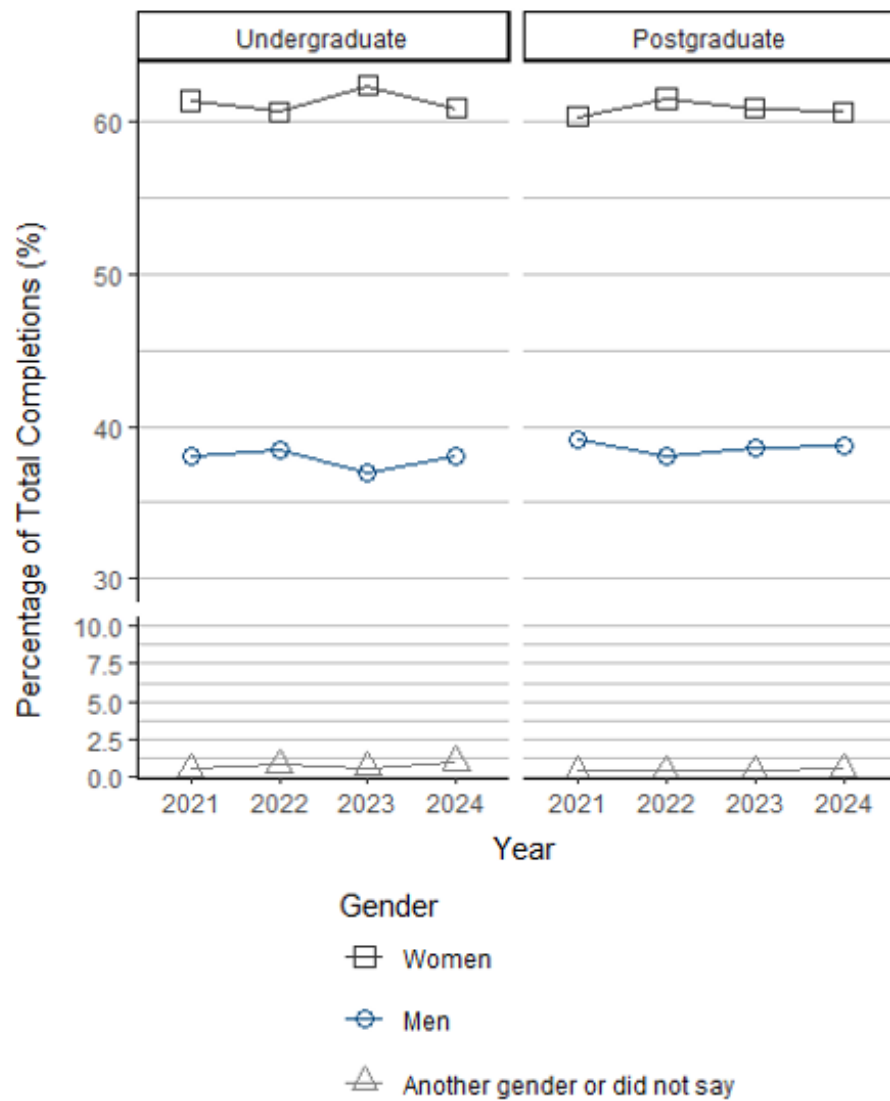


Figure 9: Qualification Completions by Level of Study from 2021-2024 by Gender.

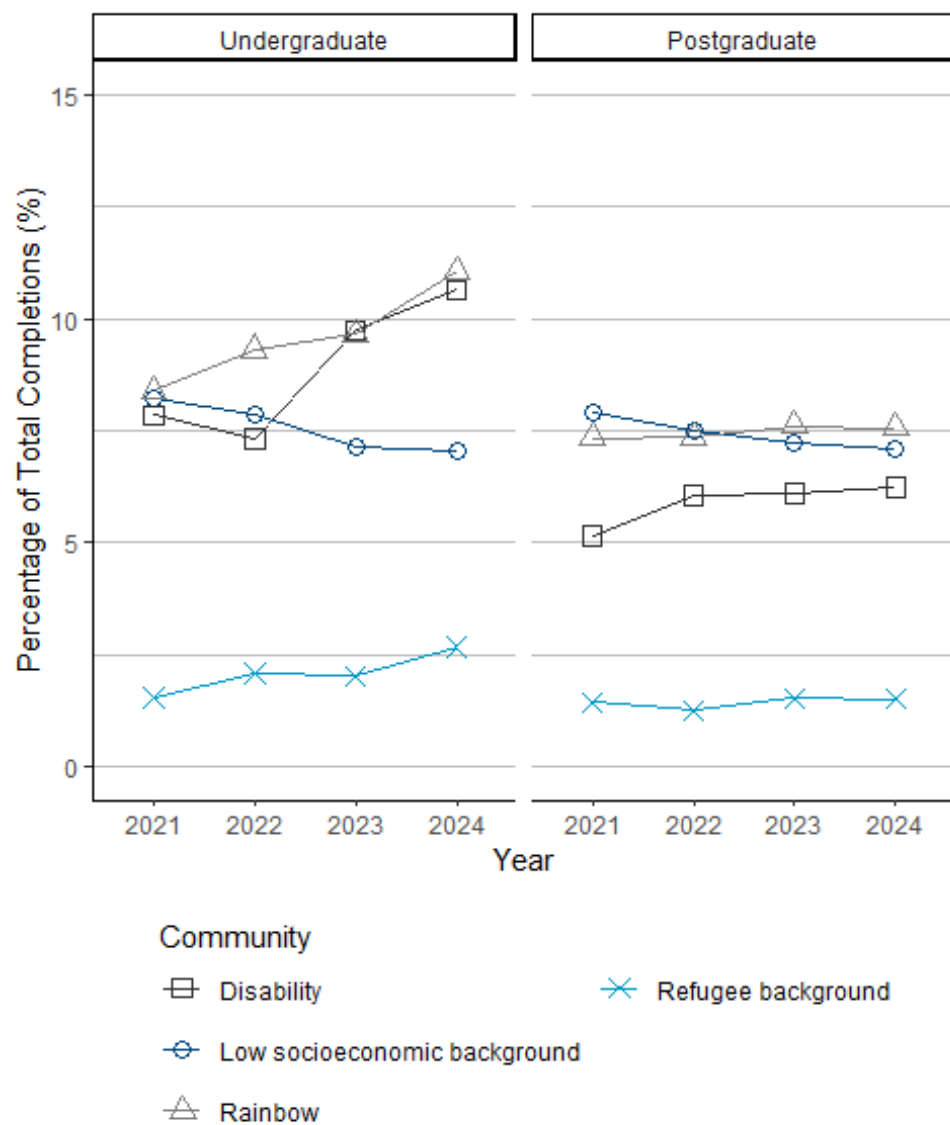


Figure 10: Qualification Completions by Level of Study from 2021-2024 by Community.

Staff Community

Staff by Academic or Professional

Table 5: Academic and Professional Staff by Demographic in 2024.

Group	Category	Total		Academic		Professional	
		Count	%	Count	%	Count	%
Overall	Total	13,095	100	6,126	100	7,642	100
Ethnicity	Asian	4,484	34	1,964	32	2,798	37
	Māori	1,114	9	513	8	666	9
	Middle Eastern, Latin American, and African	638	5	331	5	361	5
	Pacific	903	7	296	5	652	9
	Pākehā/European	5,633	43	2,848	46	3,005	39
	Other or did not say	323	2	174	3	160	2
Gender	Women	7,928	61	3,377	55	4,953	65
	Men	5,048	39	2,691	44	2,617	34
	Another gender or did not say	119	1	58	1	72	1
Communities	Disabled	955	7	453	7	575	8
	Rainbow	1,247	10	602	10	740	10
	Refugee background	172	1	74	1	107	1

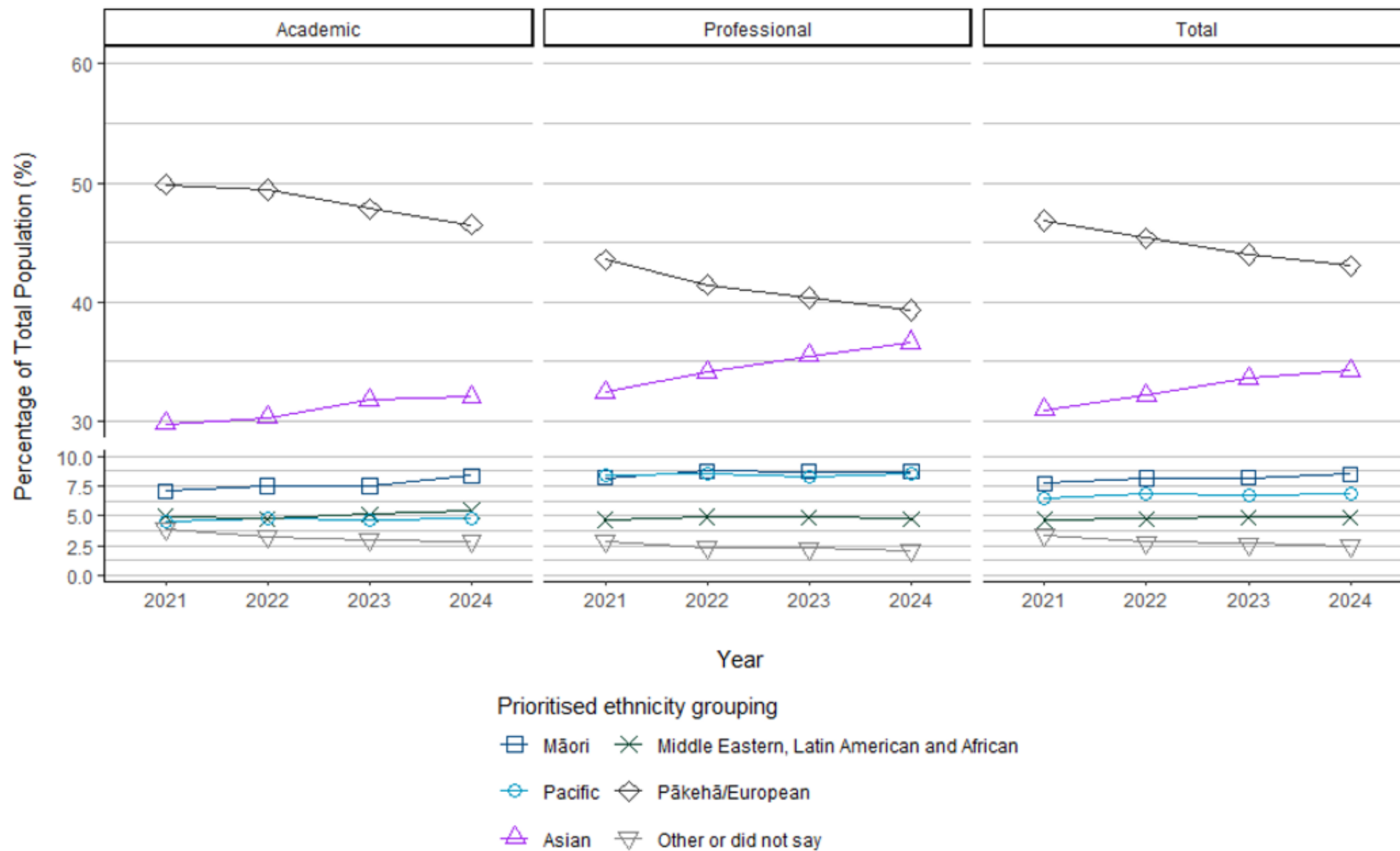


Figure 11: Academic and Professional Staff Ethnicity Demographics from 2021-2024.

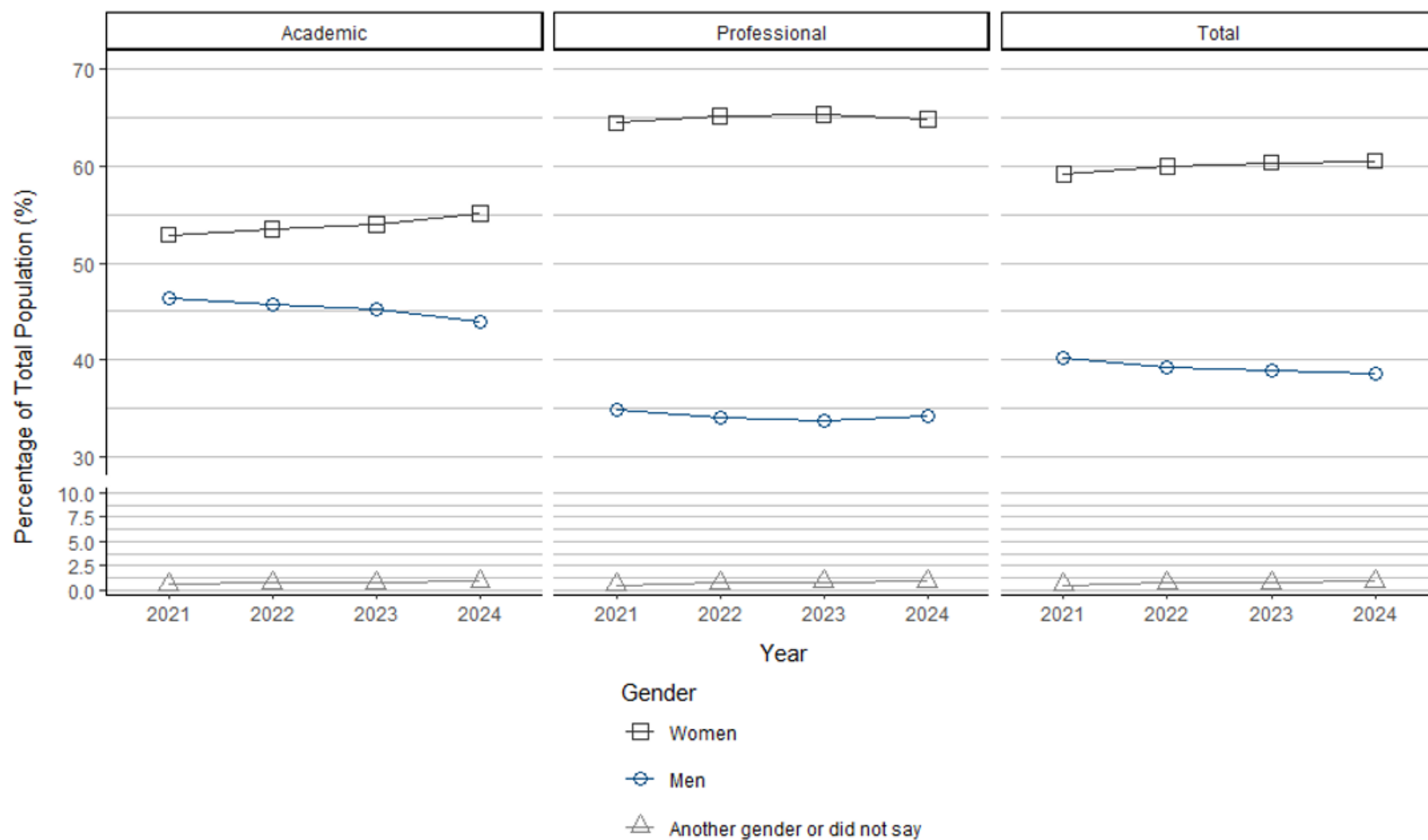


Figure 12: Academic and Professional Staff Gender Demographics from 2021-2024.

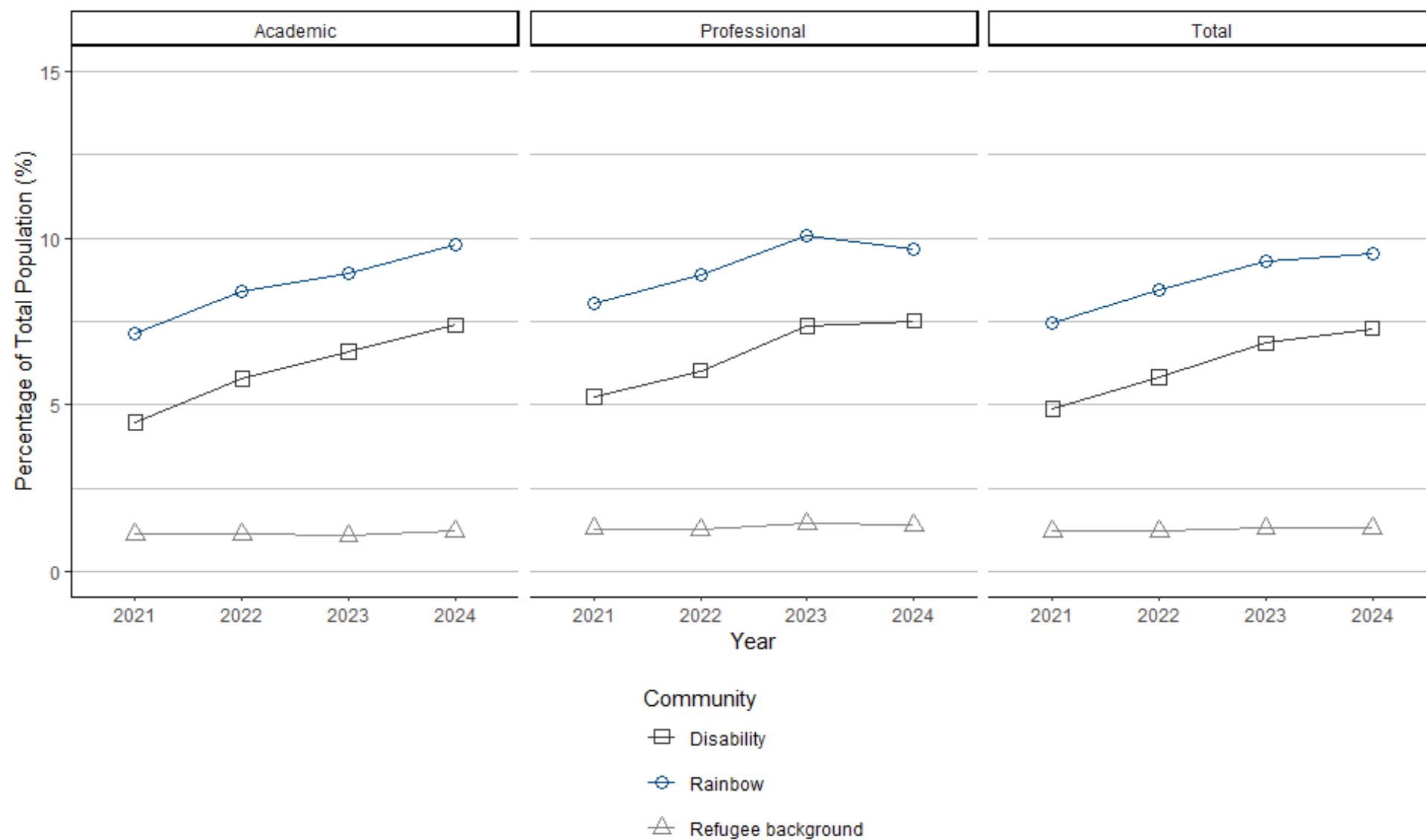


Figure 13: Academic and Professional Staff Community Demographics from 2021-2024.

Professional Staff Bands

Table 6: Professional Staff Bands by Demographic Characteristics in 2024.

Group	Category	B		C		D		E		F		G		H		>H	
		Count	%	Count	%	Count	%	Count	%	Count	%	Count	%	Count	%	Count	%
Overall	Total	598	100	1,169	100	1,094	100	1,760	100	1,118	100	744	100	663	100	964	100
Ethnicity	Asian	245	41	542	46	463	42	719	41	410	37	254	34	166	25	187	19
	Māori	73	12	108	9	107	10	135	8	90	8	44	6	63	10	86	9
	Middle Eastern, Latin American, and African	26	4	53	5	63	6	103	6	58	5	30	4	20	3	31	3
	Pacific	60	10	133	11	126	12	156	9	69	6	51	7	42	6	42	4
	Pākehā/ European	185	31	320	27	322	29	619	35	464	42	342	46	358	54	580	60
	Other or did not say	9	2	13	1	13	1	28	2	27	2	23	3	14	2	38	4
Gender	Women	361	60	743	64	689	63	1,213	69	748	67	475-480	64-65	410	62	615-620	64
	Men	231	39	411	35	391	36	531	30	358	32	260-265	35-36	250	38	335-340	35
	Another gender or did not say	6	1	14	1	14	1	16	1	12	1	<6	<1	3	<1	<6	<1
Communities	Disabled	64	11	123	11	108	10	134	8	74	7	39	5	40	6	41	4
	Rainbow	85	14	153	13	137	13	194	11	88	8	53	7	41	6	63	7
	Refugee background	15	3	21	2	25	2	24	1	13	1	<6	<1	8	1	6	<1

Academic Roles

Table 7: Traditional Academic Roles in 2024.

Group	Category	Traditional									
		AL		L		SL		AP		P	
		N	%	N	%	N	%	N	%	N	%
Overall	Total	213	100	176	100	610	100	413	100	482	100
Ethnicity	Asian	47	22	55	31	128	21	62	15	40	8
	Māori	30	14	25	14	51	8	27	7	35	7
	Middle Eastern, Latin American, and African	7	3	5-10	3-6	33	5	12	3	<6	<2
	Pacific	21	10	13	7	27	4	11	3	<6	<2
	Pākehā/European	102	48	70	40	341	56	280	68	379	79
	Other or did not say	6	3	<6	<4	30	5	21	5	18	4
Gender	Women	140-145	66-68	104	59	315	52	179	43	170-175	35-36
	Men	65-70	31-33	72	41	295	48	234	57	305-310	63-64
	Another gender or did not say	<6	<3	0	0	0	0	0	0	<6	<2
Communities	Disabled	12	6	13	7	35	6	22	5	28	6
	Rainbow	29	14	18	10	35	6	22	5	18	4
	Refugee background	<6	<3	<6	<4	<6	<1	<6	1	<6	1

AL = Assistant Lecturer

L = Lecturer

SL = Senior Lecturer

AP = Associate Professor

P = Professor

Table 8: Academic Research and Teaching Roles in 2024.

Group	Category	Teaching										Research			
		TA		GTA		T		ST		PTF		RF		SRF	
		N	%	N	%	N	%	N	%	N	%	N	%	N	%
Overall	Total	728	100	1,321	100	510	100	42	100	689	100	582	100	187	100
Ethnicity	Asian	352	48	668	51	126	25	8	19	157	23	213	37	51	27
	Māori	52	7	86	7	75	15	<6	≤10	67	10	36	6	9	5
	Middle Eastern, Latin American, and African	37	5	93	7	23	5	<6	≤10	33	5	45	8	10	5
	Pacific	45	6	58	4	47	9	<6	≤10	35	5	17	3	<6	<5
	Pākehā/European	233	32	392	30	229	45	26	62	376	55	252	43	104	56
	Other or did not say	9	1	24	2	10	2	<6	≤10	21	3	19	3	5-10	≤10
Gender	Women	409	56	714	54	345-350	68-69	29	69	407	59	347	60	103	55
	Men	306	42	587	44	155-160	30-31	13	31	277	40	231	40	83	44
	Another gender or did not say	13	2	20	2	<6	<2	0	0	5	1	4	1	1	1
Communities	Disabled	70	10	134	10	39	8	6	14	46	7	29	5	<6	2
	Rainbow	89	12	186	14	64	13	<6	≤10	69	10	38	7	9	5
	Refugee background	10	1	16	1	8	2	<6	≤10	9	1	7	1	<6	2

TA = Teaching Assistant

GTA = Graduate Teaching Assistant

T = Tutor

ST = Senior Tutor

PTF = Professional Teaching Fellow

RF = Research Fellow, including Postdoctoral Fellows

SRF = Senior Research Fellow

Table 9: Other Academic Roles in 2024.

Group	Category	Others	
		N	%
Overall	Total	173	100
Ethnicity	Asian	57	33
	Māori	16	9
	Middle Eastern, Latin American, and African	22	13
	Pacific	10-15	6-9
	Pākehā/European	64	37
	Other or did not say	<6	<4
Gender	Women	105-110	61-64
	Men	60-65	35-38
	Another gender or did not say	<6	<4
Communities	Disabled	15	9
	Rainbow	22	13
	Refugee background	<6	<4

This table represents academic staff whose primary role cannot be found in the categories presented in tables 6, 7, and 8 within the current dataset. Most of these staff members (>90%) have no specific primary academic role assigned to them. For example, this includes individuals whose primary role is a non-academic one e.g. a professional staff member who does some additional academic work.