



# Waipapa Taumata Rau Demographics 2025

This document provides information about the diverse characteristics of students and staff at Waipapa Taumata Rau, The University of Auckland.

## Overview of 2025

Undergraduate and postgraduate students predominantly identify as women, with the most commonly identified ethnic group being Asian for undergraduate and postgraduate students.

Academic and professional staff predominantly identify as women. Pākehā/European staff are the most commonly identified ethnic group among academic staff. Among professional staff, Asian and Pākehā/European staff are equally represented as the two most common groups.

Senior academic and professional staff predominantly identify themselves as Pākehā or belonging to a European ethnic group. Senior academic staff predominantly identify as men, and senior professional staff predominantly identify as women.

With the exception of professional staff ethnic group, these broad characteristics have been stable since 2021. From 2021–2024, Pākehā/European was the most commonly identified ethnic group among professional staff, 2025 is the first year in the presented data where Asian and Pākehā/European staff are equally represented as the two most common groups.

## Contents

Overview of 2025 .....	1
Key trends for 2021-2025 .....	3
Student community .....	3
Staff Community.....	3
Notes on Data.....	4
University Community .....	6
Staff and Student Overview.....	6
Student Community .....	10
Students by level of Study.....	10
Student Retention .....	14
Qualification Completions at Undergraduate and Postgraduate level.....	16



Staff Community.....	20
Staff by Academic or Professional .....	20
Professional Staff Bands.....	24
Academic Roles.....	25

## List of Tables and Figures

Table 1: Total Staff and Total Student Demographics for 2025.....	6
Table 2: Student Demographics by Level of Study.....	10
Table 3: Student Retention by Demographic in 2025. ....	14
Table 4: Qualification Completions by Demographic in 2025.....	16
Table 5: Academic and Professional Staff by Demographic in 2025.....	20
Table 6: Professional Staff Bands by Demographic Characteristics in 2025.....	24
Table 7: Traditional Academic Roles in 2025. ....	25
Table 8: Academic Teaching Roles in 2025.....	26
Table 9: Academic Research Roles in 2025.....	27
Table 10: Other Academic Roles in 2025. ....	28
Figure 1: Staff and Student Demographics from 2021-2025.....	7
Figure 2: Staff and Student Demographics from 2021-2025.....	8
Figure 3: Staff and Student Demographics from 2021-2025.....	9
Figure 4: Student Demographics by Level of Study from 2021-2025 by Ethnicity.....	11
Figure 5: Student Demographics by Level of Study from 2021-2025 by Gender.....	12
Figure 6: Student Demographics by Level of Study from 2021-2025 by Community.....	13
Figure 7: Student Retention from Previous year by Demographic Group. ....	15
Figure 8: Qualification Completions by Level of Study from 2021-2025 by Ethnicity.....	17
Figure 9: Qualification Completions by Level of Study from 2021-2025 by Gender.....	18
Figure 10: Qualification Completions by Level of Study from 2021-2025 by Community.....	19
Figure 11: Academic and Professional Staff Ethnicity Demographics from 2021-2025. ....	21
Figure 12: Academic and Professional Staff Gender Demographics from 2021-2025.....	22
Figure 13: Academic and Professional Staff Community Demographics from 2021-2025....	23

## Key trends for 2021-2025

Waipapa Taumata Rau is experiencing gradual shifts in the demographic composition of student and staff communities.

### Student community

Shifts in the composition of the student community are mainly driven by undergraduate students as undergraduate students make up the majority (66%) of students at the University. Since 2021 there have been

Increases in the percentages of students who:

- Belong to an Asian ethnic group
- Experience disability
- Belong to the Rainbow<sup>1</sup> community, with a potential plateau from 2023-2025
- Have refugee backgrounds
- Are men

Decreases in the percentages of students who:

- Belong to a Pākehā/European ethnic group
- Have low socioeconomic backgrounds
- Are women

Between 2021 and 2025 student retention tended to drop and then increase again for each demographic category. In 2025 student retention was 90% overall. The lowest retention rate was 84% and relates to students from low socioeconomic backgrounds.

### Staff Community

Since 2021, there have been

Increases in the percentages of staff who:

- Belong to an Asian ethnic group
- Are women
- Experience disability
- Belong to the Rainbow<sup>2</sup> community, with a potential plateau from 2023-2025

Decreases in the percentages of staff who:

- Belong to a Pākehā/European ethnic group
- Are men

---

<sup>1</sup> Also referred to as our LGBTQIATakatāpuiMVPFAFF+ community.

<sup>2</sup> Also referred to as our LGBTQIATakatāpuiMVPFAFF+ community.

## Notes on Data

Data are accurate as of February 4th, 2026. Census data are presented for all measures, reflecting the number of people in each group.

It is possible for an individual to be a staff member and a student. In these cases, they are counted in both categories.

Similarly, the demographic groups are not exclusive of one another. Individuals are counted in each group they belong to. Within the Communities group, the sub-groups are also not exclusive of one another.

In line with the [Methodological standard for confidentiality in the 2023 census guidelines](#), counts of less than 6 have been suppressed to keep individual information safe. In cases where these counts could be calculated using other values in the same table secondary suppression has been used. In this document, this means the value for one or more other sub-groups in the same demographic has been replaced with a range.

### Demographic groups

The following demographic groups are used throughout this document.

- Ethnicity (Prioritised)
  - *Categories: Māori ; Pacific; Asian; Middle Eastern, Latin American, and African; Pākehā/European; Other or did not say.*
  - Individuals appear in one category only, as defined by Stats NZ criteria.
  - Values within each ethnicity category should add to the value seen in the 'total' row.
  - The groups are presented in alphabetical order in the tables, and Stats NZ prioritised order in the legend of the figures.
- Gender
  - *Categories: Women, Men, Another gender or did not say.*
  - Individuals appear in one gender category only.
  - Values within gender should add to the value seen in the 'total' row.
  - The categories are presented in the order Women, Men, Another gender or did not say. This matches the largest to smallest counts and percentages from all columns in Table 1.
- Communities
- *Groups: Disability, LGBTQIATakatāpuiMVPFAFF+ referred to as Rainbow, Refugee Background, Low Socioeconomic Background*
  - Individuals will appear in every community group that they identify with.
  - Values within the Communities group may not add to the value seen in the 'total' row and are not expected to.
  - Information for socioeconomic background is available for students only, and not staff.

- Low socioeconomic background is based on the decile of the most recent secondary school that students had previously attended and necessarily excludes any students who did not attend secondary school in New Zealand.
- The community groups are presented in alphabetical order.

## University Community

### Staff and Student Overview

Table 1: Total Staff and Total Student Demographics for 2025.

Group	Category	Total Count	Total %	Student Count	Student %	Staff Count	Staff %
<b>Overall</b>	<b>Total</b>	<b>62,530</b>	<b>100</b>	<b>49,901</b>	<b>100</b>	<b>12,629</b>	<b>100</b>
Ethnicity	Asian	30,604	49	26,208	53	4,396	35
	Māori	4,312	7	3,300	7	1,012	8
	Middle Eastern, Latin American, and African	2,551	4	1,934	4	617	5
	Pacific	4,986	8	4,122	8	864	7
	Pākehā/European	18,946	30	13,718	27	5,228	41
	Other or did not say	1,131	2	619	1	512	4
Gender	Men	26,229	42	21,288	43	4,941	39
	Women	35,712	57	28,125	56	7,587	60
	Another gender or did not say	596	1	488	1	108	1
Communities	Disabled	6,187	10	5,221	10	966	8
	Low socioeconomic background	--	--	3,509	7	--	--
	Rainbow	5,820	9	4,667	9	1,153	9
	Refugee background	1,373	2	1,208	2	165	1

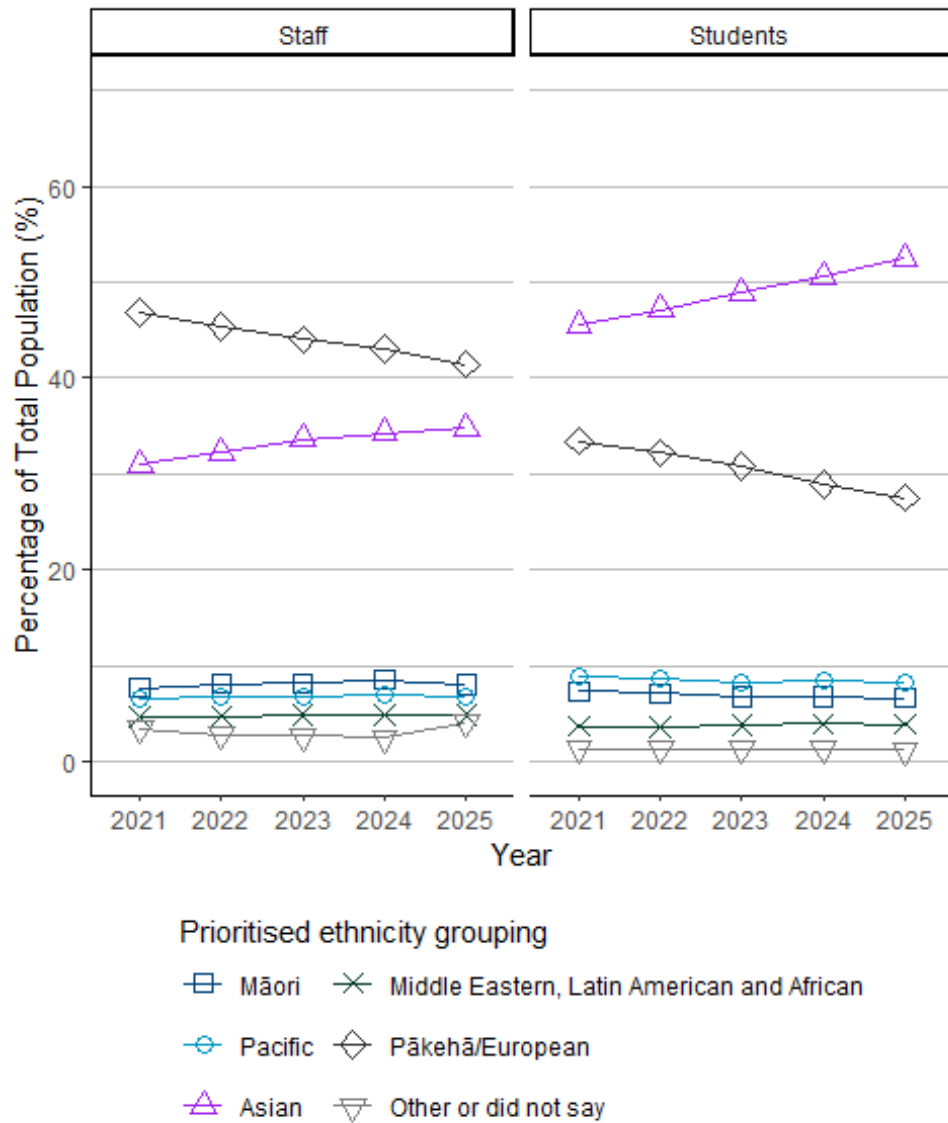


Figure 1: Staff and Student Demographics from 2021-2025.

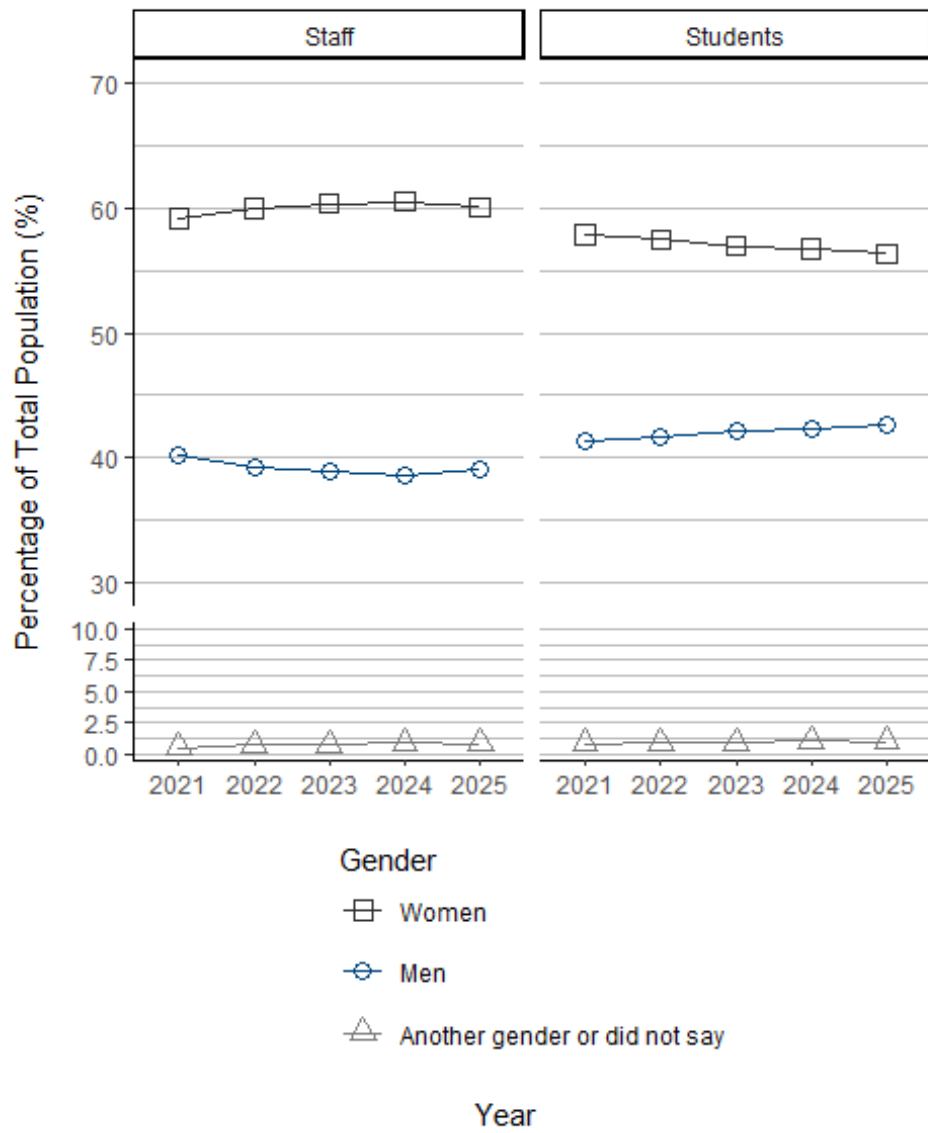


Figure 2: Staff and Student Demographics from 2021-2025.

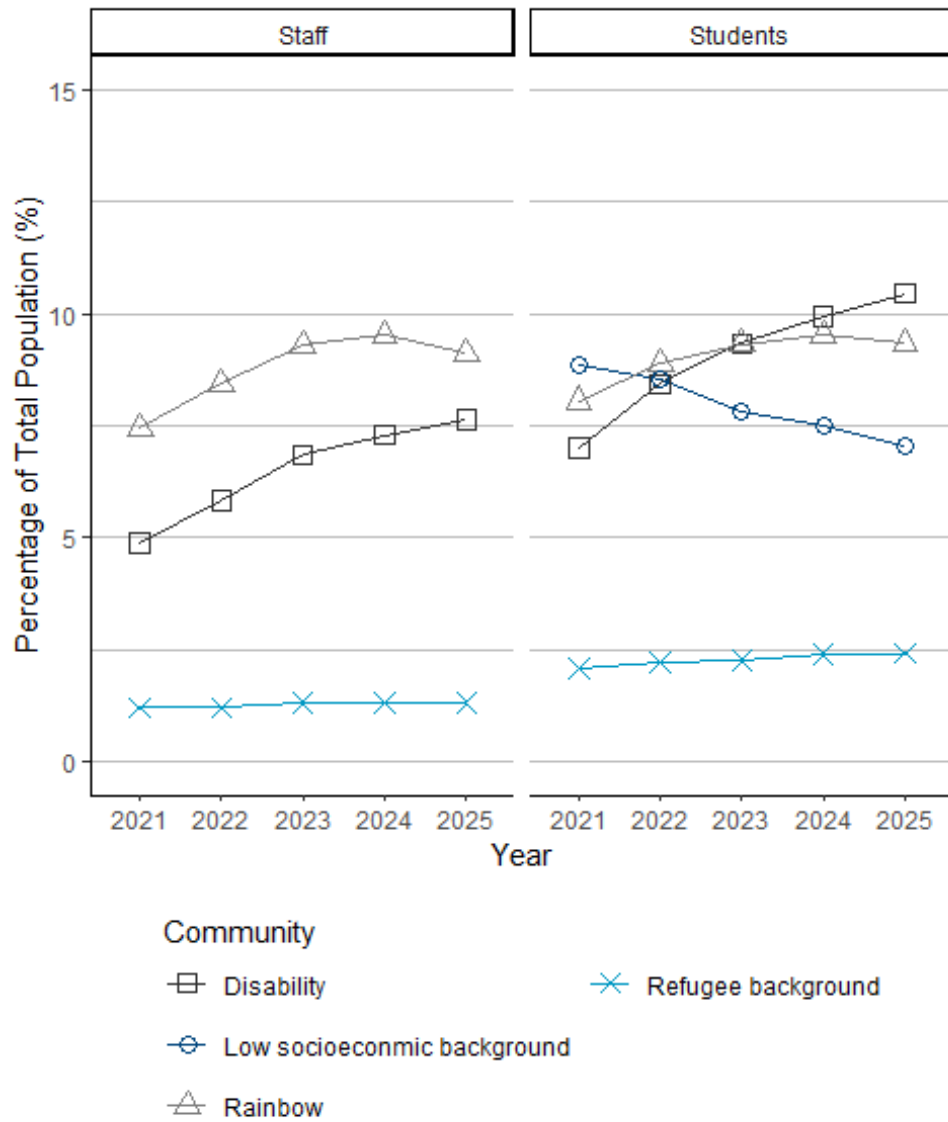


Figure 3: Staff and Student Demographics from 2021-2025.

## Student Community

### Students by level of Study

Table 2: Student Demographics by Level of Study.

Group	Category	Undergraduate Count	Undergraduate %	Taught Postgraduate Count	Taught Postgraduate %	Research Postgraduate Count	Research Postgraduate %
<b>Overall</b>	<b>Total</b>	<b>34,386</b>	<b>100</b>	<b>13,827</b>	<b>100</b>	<b>4,219</b>	<b>100</b>
Ethnicity	Asian	17,893	52	7,511	54	2,335	55
	Māori	2,394	7	810	6	222	5
	Middle Eastern, Latin American, and African	1,241	4	508	4	279	7
	Pacific	3,126	9	927	7	174	4
	Pākehā/European	9,336	27	3,906	28	1,125	27
	Other or did not say	396	1	165	1	84	2
Gender	Men	15,694	46	5,193	38	1,763	42
	Women	18,305	53	8,540	62	2,417	57
	Another gender or did not say	387	1	94	1	39	1
Communities	Disabled	4,111	12	974	7	333	8
	Low socioeconomic background	2,541	7	907	7	166	4
	Rainbow	3,416	10	1,056	8	414	10
	Refugee background	1,011	3	205	1	45	1

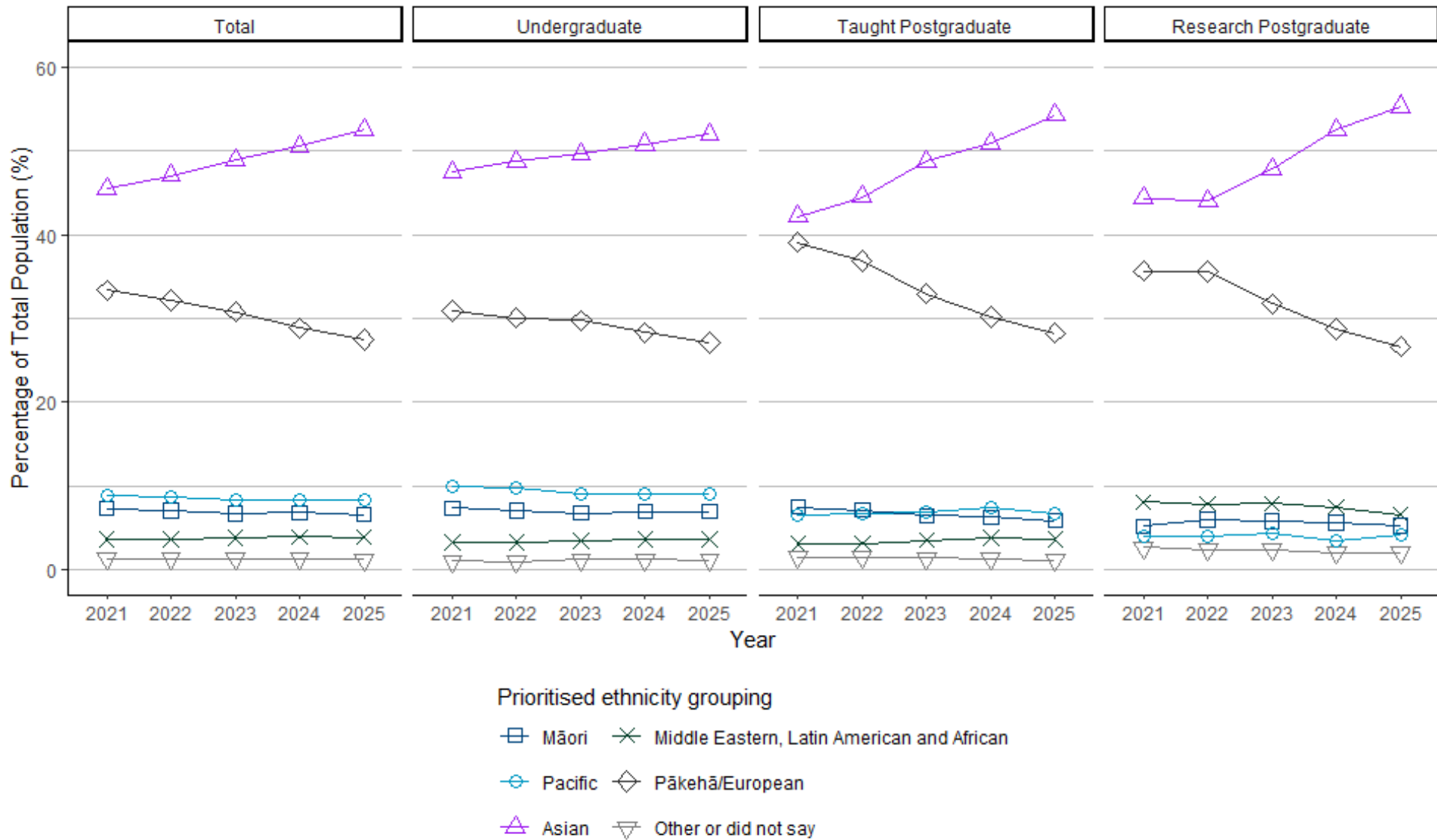


Figure 4: Student Demographics by Level of Study from 2021-2025 by Ethnicity.

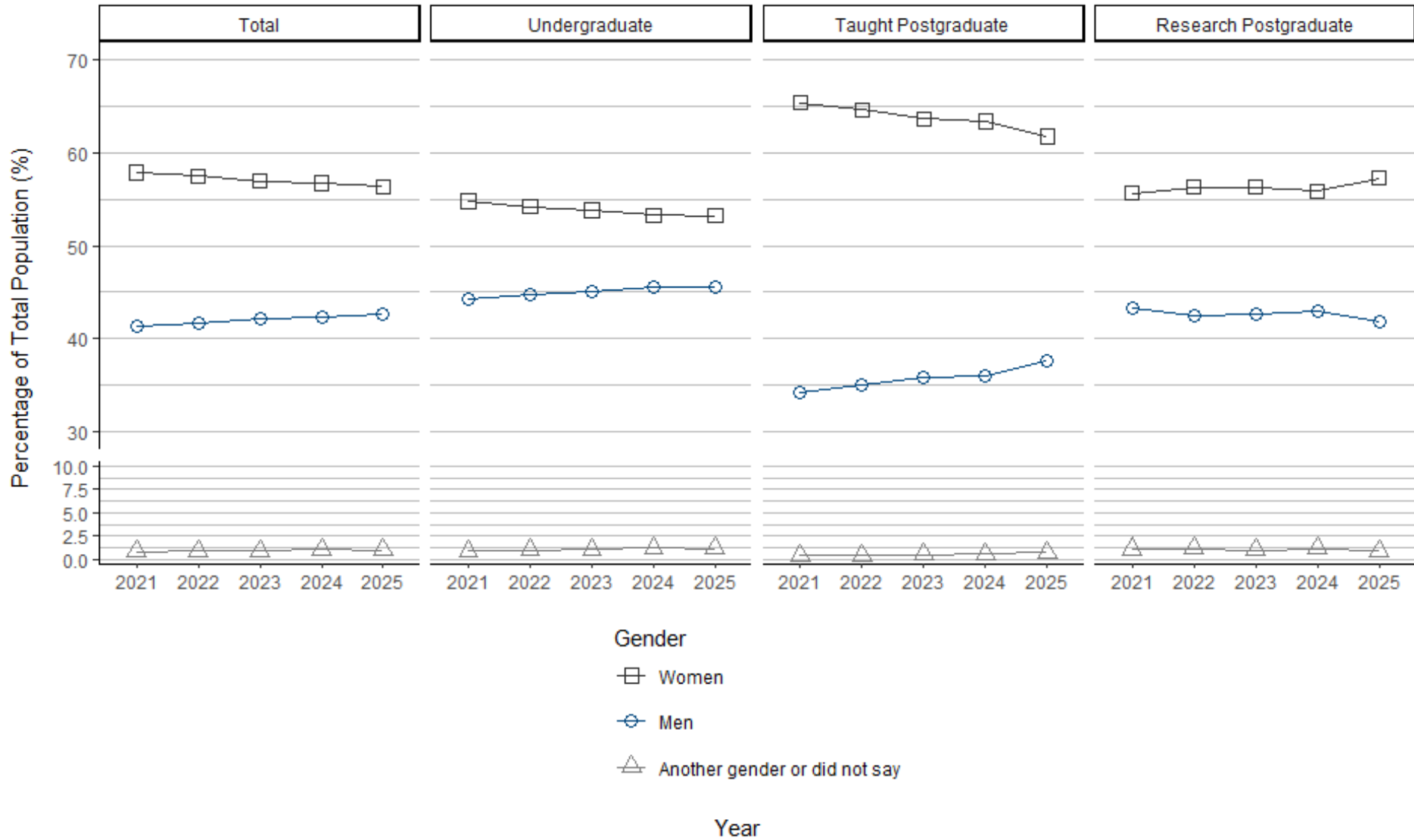


Figure 5: Student Demographics by Level of Study from 2021-2025 by Gender.

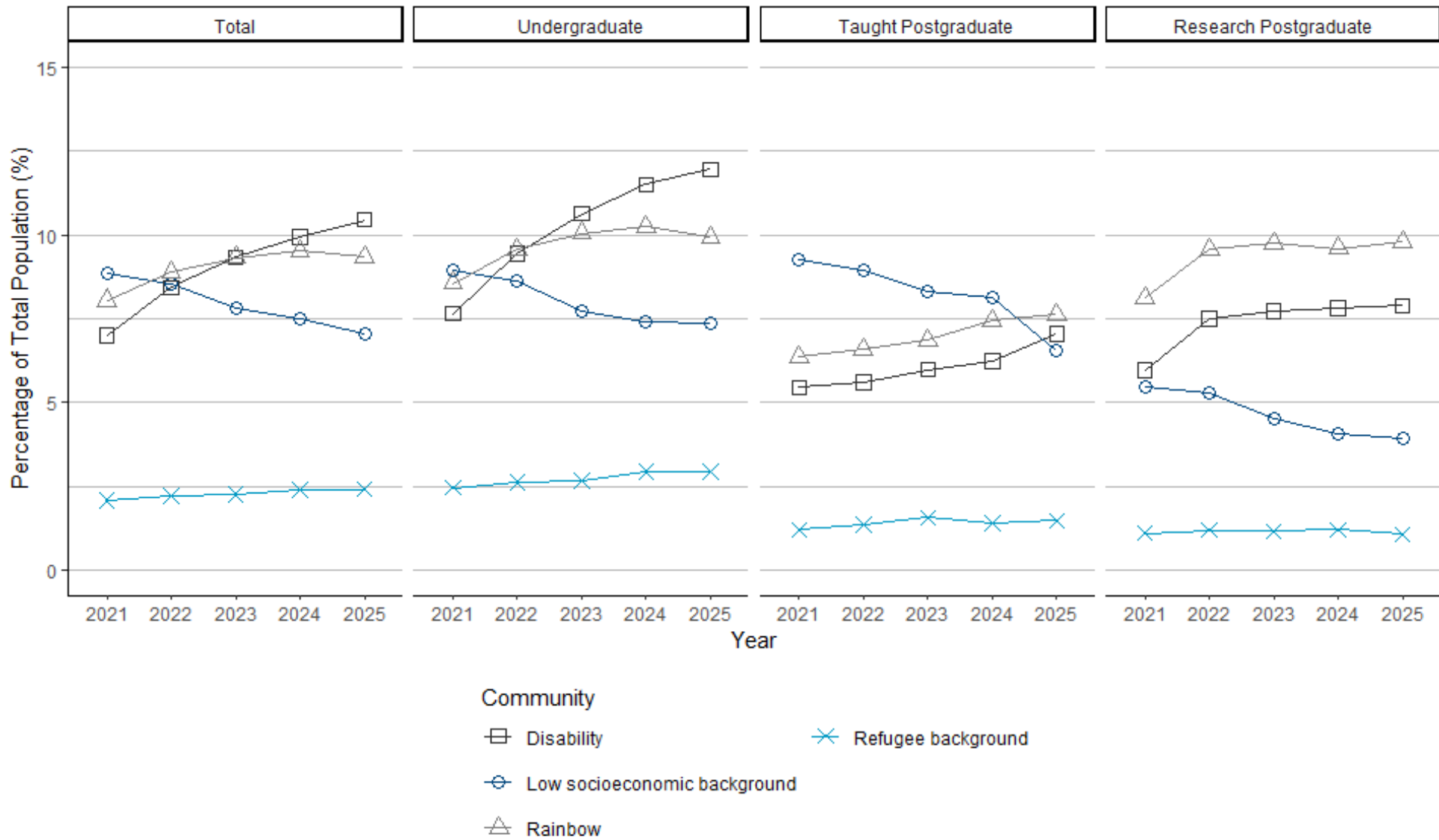


Figure 6: Student Demographics by Level of Study from 2021-2025 by Community.

## Student Retention

Table 3: Student Retention by Demographic in 2025.

Group	Category	Count 2024	Count 2025	Retained %
<b>Overall</b>	<b>Total</b>	<b>5,449</b>	<b>4,893</b>	<b>90</b>
Ethnicity	Asian	2,628	2,402	91
	Māori	432	368	85
	Middle Eastern, Latin American, and African	185	168	91
	Pacific	489	429	88
	Pākehā/European	1,679	1,493	89
	Other or did not say	36	33	92
Gender	Men	2,574	2,321	90
	Women	2,817	2,519	89
	Another gender or did not say	58	53	91
Communities	Disabled	451	397	88
	Low socioeconomic background	412	347	84
	Rainbow	499	445	89
	Refugee background	212	184	87

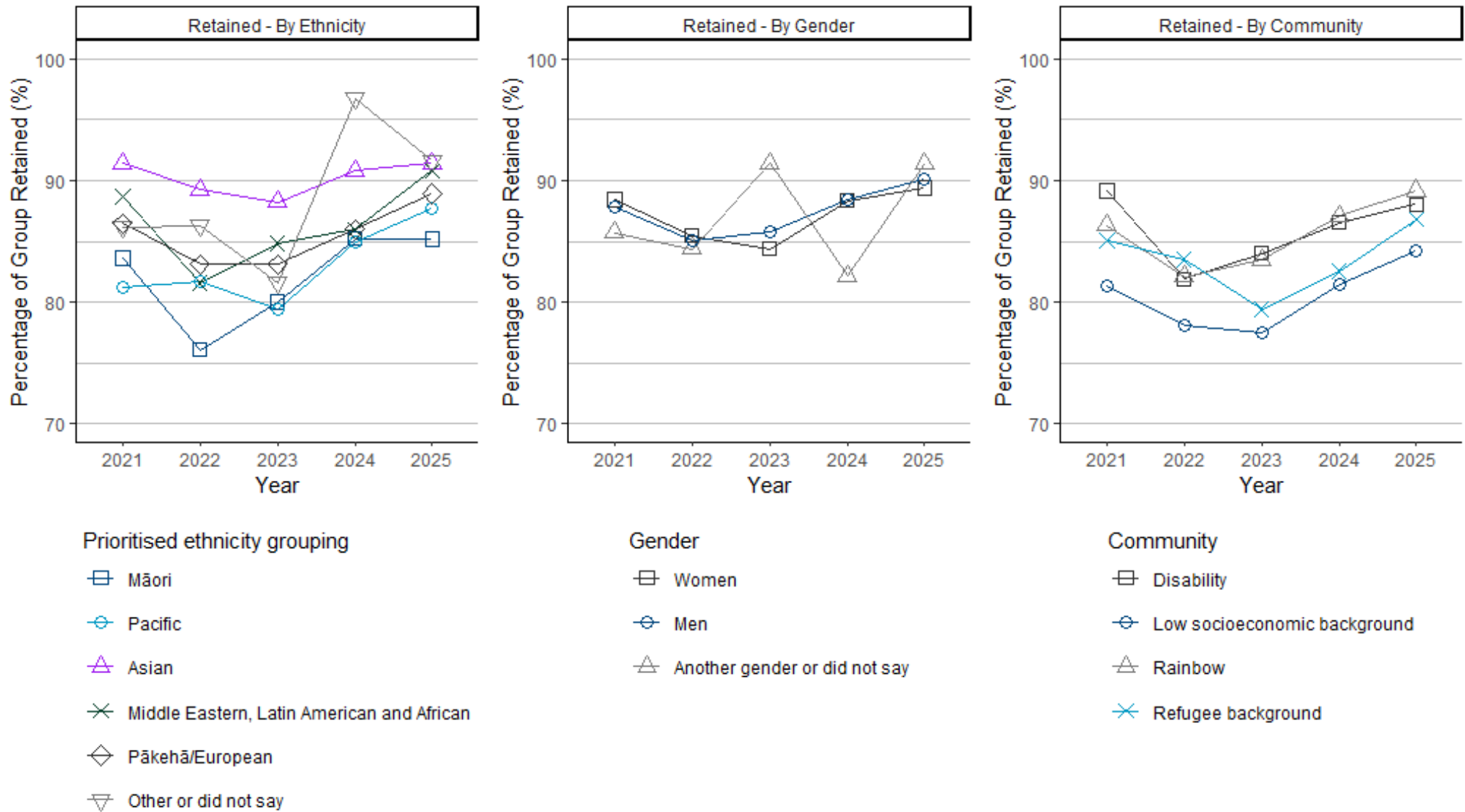


Figure 7: Student Retention from Previous year by Demographic Group.

## Qualification Completions at Undergraduate and Postgraduate level

Percentages shown represent the share of all qualification completions accounted for by each category, describing the make-up of completers rather than the proportion of students within each category who completed.

Table 4: Qualification Completions by Demographic in 2025.

Group	Category	Undergraduate Count	Undergraduate %	Postgraduate Count	Postgraduate %
<b>Overall</b>	<b>Total</b>	<b>5,394</b>	<b>100</b>	<b>6,394</b>	<b>100</b>
Ethnicity	Asian	2,679	50	3,510	55
	Māori	356	7	371	6
	Middle Eastern, Latin American, and African	175	3	264	4
	Pacific	419	8	387	6
	Pākehā/European	1,725	32	1,778	28
	Other or did not say	40	1	84	1
Gender	Men	2,111	39	2,486	39
	Women	3,219	60	3,866	60
	Another gender or did not say	64	1	42	1
Communities	Disabled	580	11	408	6
	Low socioeconomic background	385	7	415	6
	Rainbow	575	11	495	8
	Refugee background	127	2	111	2

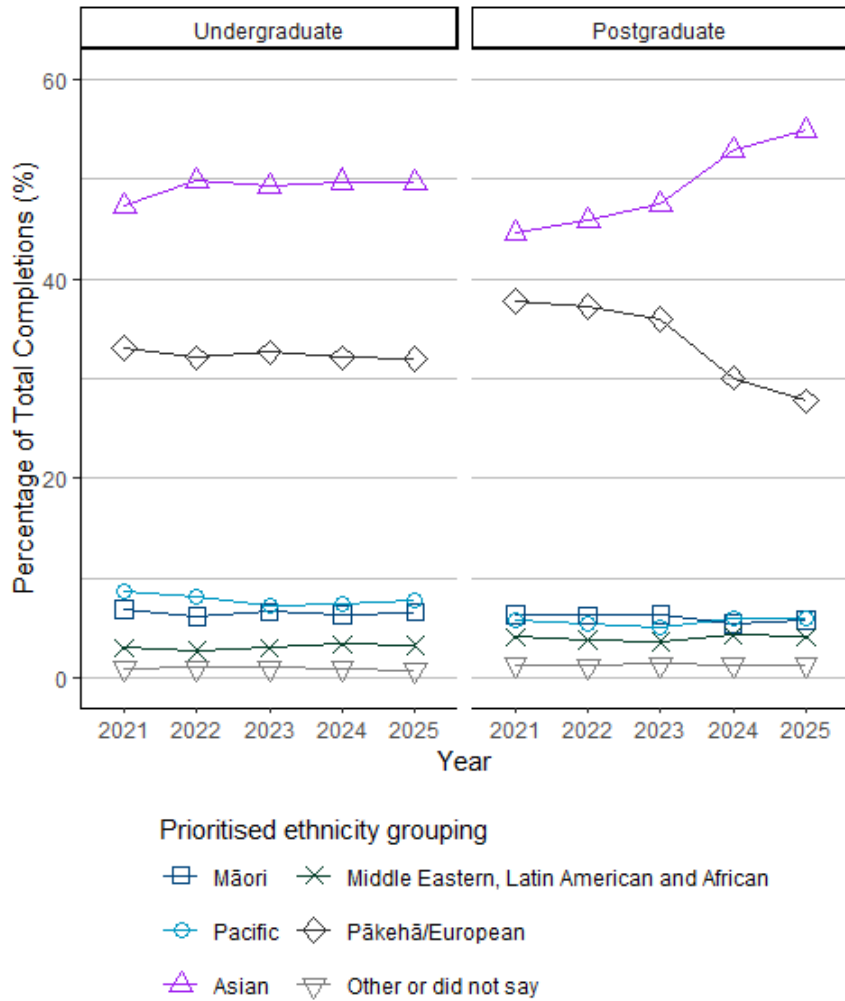


Figure 8: Qualification Completions by Level of Study from 2021-2025 by Ethnicity.

Note: Percentages shown represent the share of all qualification completions by prioritised ethnic grouping, describing the make-up of completers rather than the proportion of students within each ethnic grouping who completed.

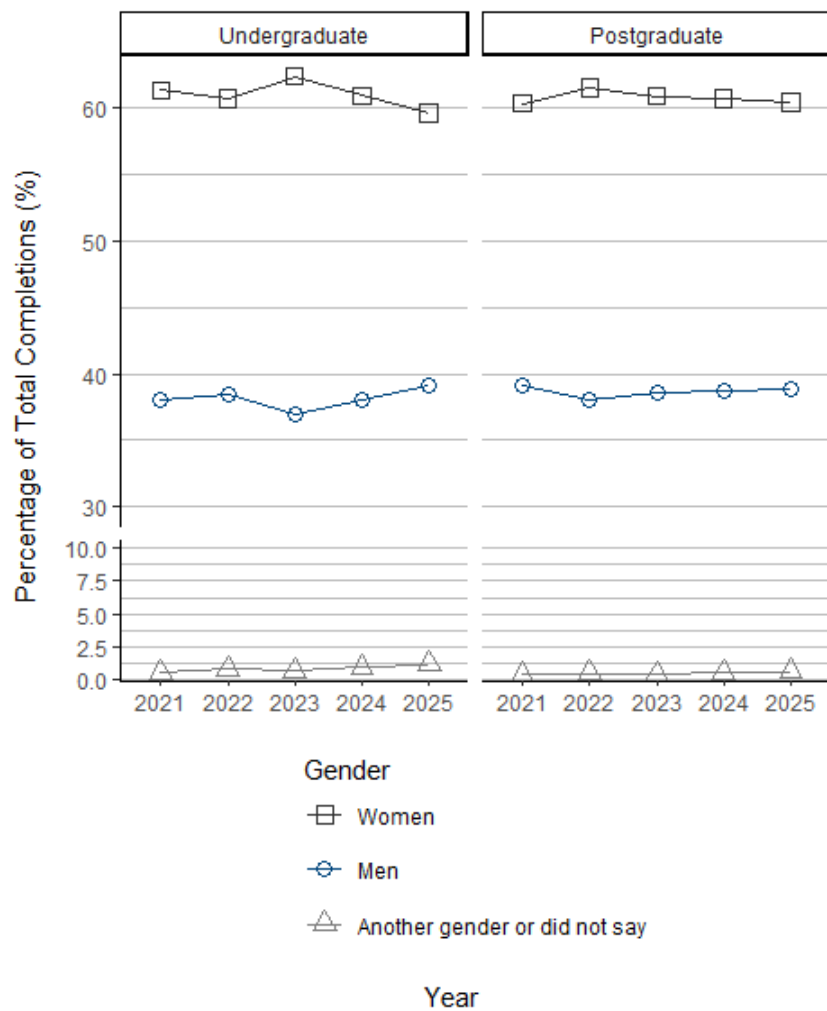


Figure 9: Qualification Completions by Level of Study from 2021-2025 by Gender.

Note: Percentages shown represent the share of all qualification completions by gender, describing the make-up of completers rather than the proportion of students within each gender who completed.

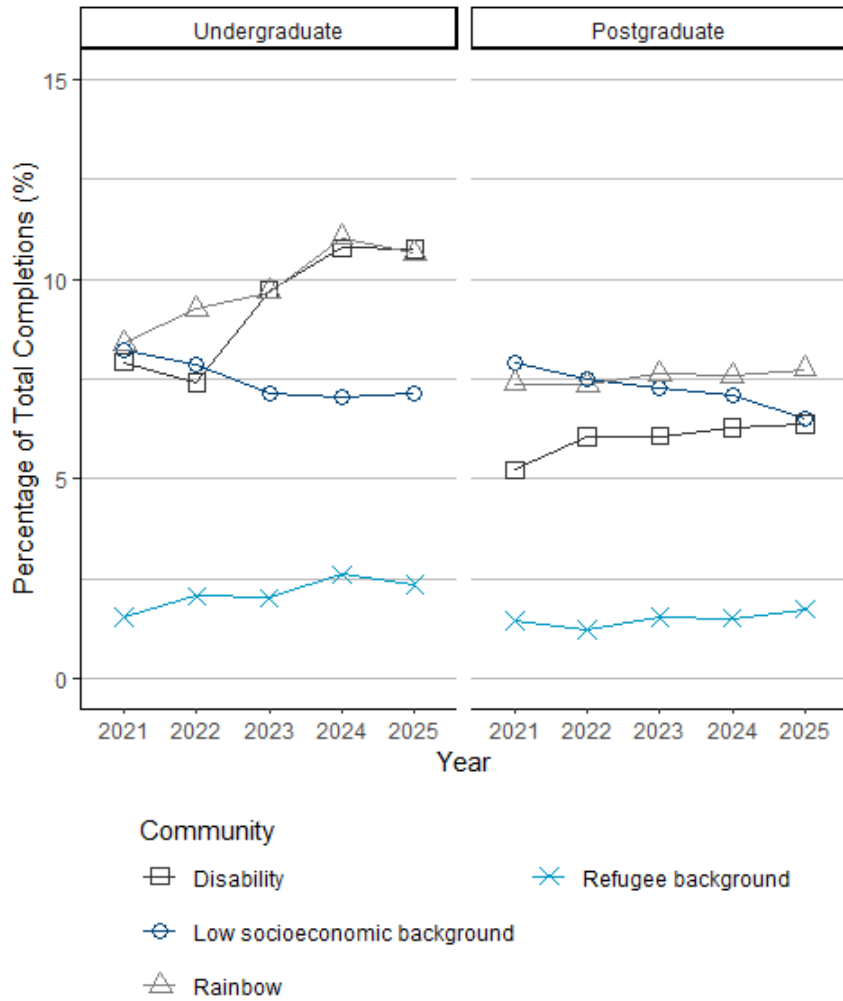


Figure 10: Qualification Completions by Level of Study from 2021-2025 by Community.

Note: Percentages shown represent the share of all qualification completions associated with each community, describing the make-up of completers rather than the proportion of students within that community who completed.

## Staff Community

### Staff by Academic or Professional

Table 5: Academic and Professional Staff by Demographic in 2025.

Group	Category	Total Count	Total %	Academic Count	Academic %	Professional Count	Professional %
<b>Overall</b>	<b>Total</b>	<b>12,629</b>	<b>100</b>	<b>5,851</b>	<b>100</b>	<b>7,333</b>	<b>100</b>
Ethnicity	Asian	4,396	35	1,947	33	2,714	37
	Māori	1,012	8	454	8	591	8
	Middle Eastern, Latin American, and African	617	5	286	5	370	5
	Pacific	864	7	274	5	630	9
	Pākehā/European	5,228	41	2,682	46	2,716	37
	Other or did not say	512	4	208	4	312	4
Gender	Men	4,941	39	2,620	45	2,543	35
	Women	7,587	60	3,186	54	4,723	64
	Another gender or did not say	108	1	50	1	69	1
Communities	Disabled	966	8	447	8	569	8
	Rainbow	1,153	9	565	10	660	9
	Refugee background	165	1	63	1	107	1

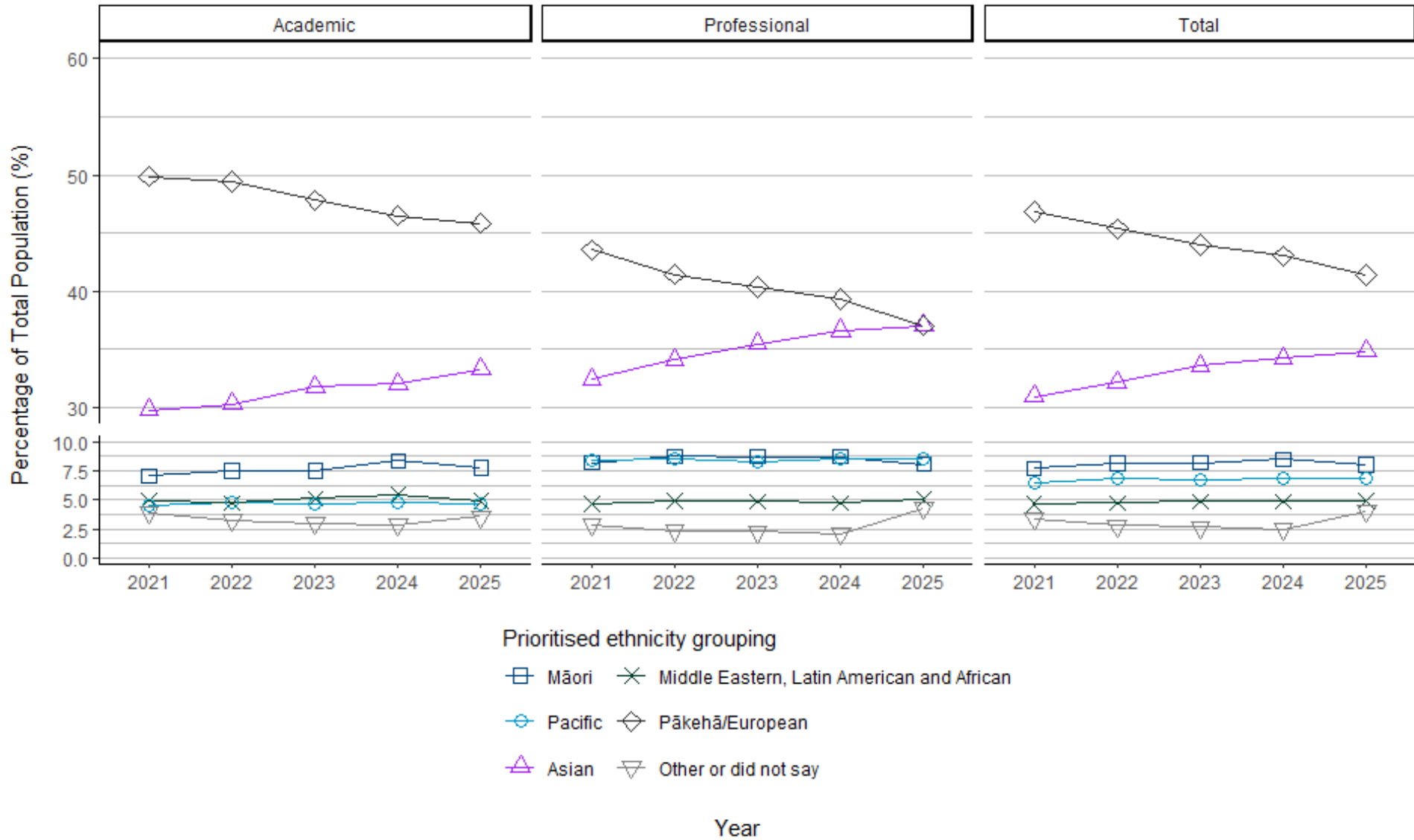


Figure 11: Academic and Professional Staff Ethnicity Demographics from 2021-2025.

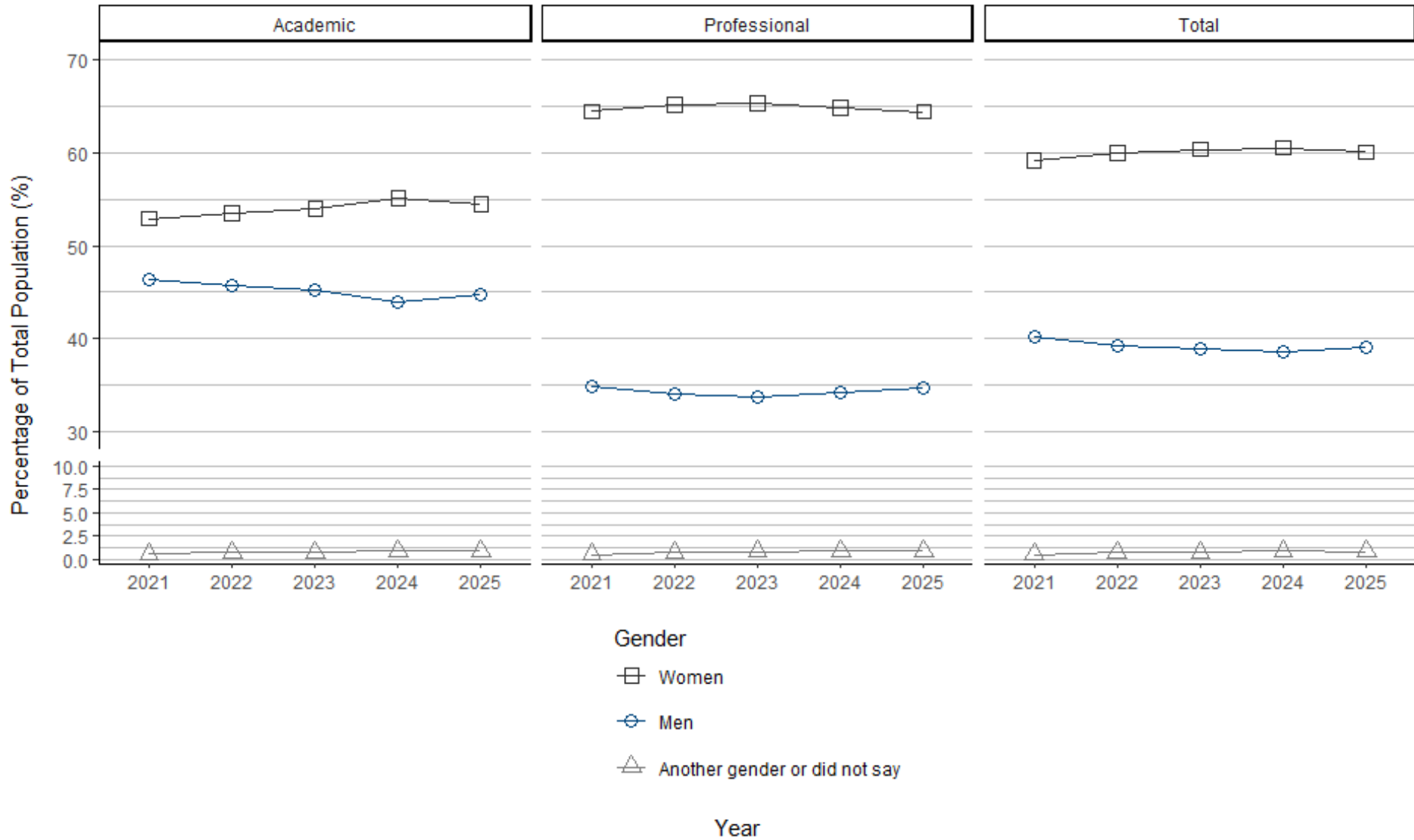


Figure 12: Academic and Professional Staff Gender Demographics from 2021-2025.

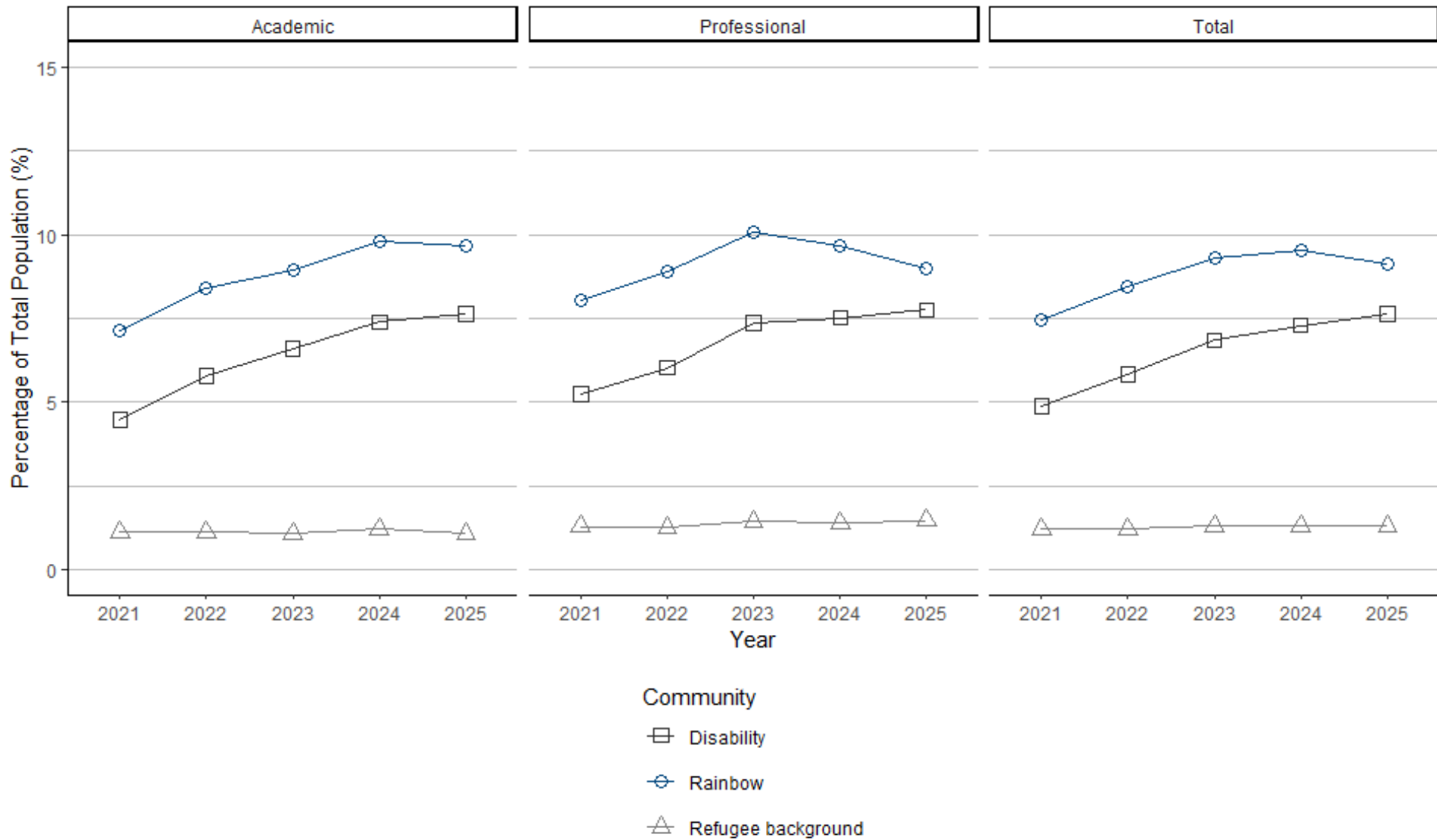


Figure 13: Academic and Professional Staff Community Demographics from 2021-2025.

## Professional Staff Bands

Table 6: Professional Staff Bands by Demographic Characteristics in 2025.

Group	Category	B N	B %	C N	C %	D N	D %	E N	E %	F N	F %	G N	G %	H N	H %	>H N	>H %
<b>Overall</b>	<b>Total</b>	<b>166</b>	<b>100</b>	<b>409</b>	<b>100</b>	<b>457</b>	<b>100</b>	<b>1,031</b>	<b>100</b>	<b>814</b>	<b>100</b>	<b>614</b>	<b>100</b>	<b>584</b>	<b>100</b>	<b>717</b>	<b>100</b>
Ethnicity	Asian	62	37	192	47	188	41	424	41	301	37	207	34	153	26	121	17
	Māori	19	11	27	7	40	9	76	7	55	7	37	6	56	10	56	8
	Middle Eastern, Latin American, and African	11	7	25	6	36	8	63	6	42	5	26	4	17	3	22	3
	Pacific	16	10	45	11	51	11	102	10	55	7	44	7	28	5	34	5
	Pākehā/ European	51- 55	31- 33	113	28	136- 140	30- 31	348	34	345	42	280	46	311	53	452	63
	Other or did not say	<6	<4	7	2	<6	<2	18	2	16	2	20	3	19	3	32	4
Gender	Men	66	40	147	36	143	31	284	28	270	33	223	36	226	39	250	35
	Women	96- 100	58- 60	256- 260	63- 64	306- 310	67- 68	737	71	536	66	386- 390	63- 64	356- 360	61- 62	461- 465	64- 65
	Another gender or did not say	<6	<4	<6	<2	<6	<2	10	1	8	1	<6	<1	<6	<1	<6	<1
Communities	Disabled	16	10	42	10	36	8	79	8	55	7	40	7	39	7	31	4
	Rainbow	17	10	45	11	54	12	96	9	55	7	44	7	34	6	47	7
	Refugee background	<6	<4	8	2	9	2	15	1	12	1	<6	<1	7	1	<6	<1

## Academic Roles

Table 7: Traditional Academic Roles in 2025.

Group	Category	AL N	AL %	L N	L %	SL N	SL %	AP N	AP %	P N	P %
<b>Overall</b>	<b>Total</b>	<b>8</b>	<b>100</b>	<b>185</b>	<b>100</b>	<b>613</b>	<b>100</b>	<b>439</b>	<b>100</b>	<b>496</b>	<b>100</b>
Ethnicity	Asian	*	*	57	31	134	22	70	16	44	9
	Māori	*	*	28	15	50	8	31	7	36	7
	Middle Eastern, Latin American, and African	*	*	9	5	34	6	13	3	<6	<2
	Pacific	*	*	13	7	32	5	12	3	6	1
	Pākehā/European	*	*	70	38	332	54	292	67	38	77
	Other or did not say	*	*	8	4	31	5	21	5	21-25	4-5
Gender	Women	*	*	101	55	316	52	191-195	44	181	36
	Men	*	*	81-85	44-46	296-300	48-49	246	56	311-315	63-64
	Another gender or did not say	*	*	<6	<3	<6	<1	<6	<2	<6	<2
Communities	Disabled	*	*	13	7	38	6	29	7	28	6
	Rainbow	*	*	20	11	35	6	27	6	19	4
	Refugee background	*	*	<6	<3	<6	<1	6	1	<6	<2

\* These data cannot be meaningfully reported while keeping information about individuals safe.

AL = Assistant Lecturer

L = Lecturer

SL = Senior Lecturer

AP = Associate Professor

P = Professor

Table 8: Academic Teaching Roles in 2025.

Group	Category	TA N	TA %	GTA N	GTA %	T N	T %	ST N	ST %	PTF N	PTF %
<b>Overall</b>	<b>Total</b>	<b>1,350</b>	<b>100</b>	<b>751</b>	<b>100</b>	<b>36</b>	<b>100</b>	<b>684</b>	<b>100</b>	<b>471</b>	<b>100</b>
Ethnicity	Asian	713	53	376	50	<6	<15	174	25	157	33
	Māori	78	6	49	7	<6	<15	66	10	30	6
	Middle Eastern, Latin American, and African	85	6	31	4	<6	<15	33	5	38	8
	Pacific	56	4	44	6	<6	<15	30	4	13	3
	Pākehā/European	394	29	242	32	20	56	356	52	210	45
	Other or did not say	24	2	9	1	<6	<15	25	4	23	5
Gender	Men	597	44	366	49	11-15	31-42	266-270	39	181-185	38-39
	Women	733	54	375	50	21-25	58-69	414	61	286	61
	Another gender or did not say	21	2	11	1	<6	<15	<6	<1	<6	<2
Communities	Disabled	129	10	84	11	<6	<15	51	7	32	7
	Rainbow	175	13	98	13	<6	<15	75	11	34	7
	Refugee background	14	1	13	2	<6	<15	6	1	6	1

TA = Teaching Assistant

GTA = Graduate Teaching Assistant

T = Tutor

ST = Senior Tutor

PTF = Professional Teaching Fellow

Table 9: Academic Research Roles in 2025.

Group	Category	RF N	RF %	SRF N	SRF %
<b>Overall</b>	<b>Total</b>	<b>200</b>	<b>100</b>	<b>1,350</b>	<b>100</b>
Ethnicity	Asian	57	29	713	53
	Māori	13	7	78	6
	Middle Eastern, Latin American, and African	7	4	85	6
	Pacific	6	3	56	4
	Pākehā/European	111	56	394	29
	Other or did not say	6	3	24	2
Gender	Men	86	43	597	44
	Women	114	57	733	54
	Another gender or did not say	0	0	21	2
Communities	Disabled	<6	<3	129	10
	Rainbow	10	5	175	13
	Refugee background	<6	<2	14	1

RF = Research Fellow, including Postdoctoral Fellows

SRF = Senior Research Fellow

Table 10: Other Academic Roles in 2025.

Group	Category	N	%
<b>Overall</b>	<b>Total</b>	<b>843</b>	<b>100</b>
Ethnicity	Asian	225	27
	Māori	94	11
	Middle Eastern, Latin American, and African	35	4
	Pacific	72	9
	Pākehā/European	373	44
	Other or did not say	44	5
Gender	Men	257	30
	Women	579	69
	Another gender or did not say	6	1
Communities	Disabled	54	6
	Rainbow	88	10
	Refugee background	9	1

This table represents academic staff whose primary role cannot be found in the categories presented in tables 6, 7, and 8 within the current dataset. Most of these staff members (>90%) have no specific primary academic role assigned to them. For example, this includes individuals whose primary role is a non-academic one e.g. a professional staff member who does some additional academic work.