

THE UNIVERSITY OF AUCKLAND news

Fortnightly newsletter for University staff | Volume 40 | Issue 1 | 29 January 2009

Childcare centre for Tamaki



The Tamaki Campus's long-awaited childcare centre opened this month and it's already fielding a stream of inquiries from parents eager to enrol their children.

At the moment, the brand-new, purpose-built centre has just a handful of babies and preschoolers on its roll. But when it reaches full capacity it will care for and educate up to 70 children aged from three months to five years.

Just Kidz Educare, situated on University land adjacent to Colin Maiden Park in Merton Road, St Johns, has been set up to cater primarily for the children of University staff and students. Space permitting, the privately owned and operated centre will accept tots from the local community as well.

The centre follows the Reggio Emilia early childhood education (ECE) philosophy, within the framework of New Zealand's Te Whāriki ECE curriculum.

Both approaches emphasise the learning partnership between kaiako/teachers, parents, children and whānau/family, explains centre manager Stephanie Hawkins.

But the Reggio Emilia philosophy, born in Italy, places special weight on the principles of respect, responsibility, exploration and discovery, she says. "It's a project-based approach to learning, where we work on the child's thinking process.

"We follow the child's interests and we provide the resources to help them develop their skills and knowledge."

Above all, though, this is a family-oriented centre.

"We stick to the individual child's home routines as far as we can."

Bright, modern and well equipped, Just Kidz is surrounded on three sides by green, open parkland.

The centre has three separate but interconnected areas – one each for the babies, the toddlers and the older preschoolers. Toddlers and older preschoolers aren't lumped in together for activities – as they so often are in many other centres. "By having separate spaces, teachers can provide developmentally appropriate activities for the different age groups," says Stephanie.

The babies' area is self-contained with its own peaceful sleep-room, separate kitchen, changing and toileting facilities and safe outdoor play area. Yet the babies are still visible from the other parts of the centre, meaning their older siblings can see and interact with them.

The centre's staff take pride in creating individual portfolios of each child's daily life at the centre which parents take home.

"University staff have worked really hard to make the centre happen," says Suzanne Mitchell, Communications and Events Coordinator at Tamaki. "We're thrilled that it's finally here."

Head of the Tamaki Campus, Professor Michael Davies, thanked Professor Ralph Cooney, his predecessor, Brendan Mosely, the campus's former director, and Peter Fehl, Director of Property Services, for their efforts in establishing the centre.

Key events

Infant mental health

The International Conference on Infant, Toddler and Early Childhood Mental Health takes place at the Werry Centre for Child and Adolescent Mental Health at the University from 18 to 20 February. Leading world experts will present the latest research on effective treatments for early relationship disorders; pre-term birth; early conduct problems; autistic spectrum disorder; and Māori and Pacific models of early social and emotional development. Dr Barry M Lester, Professor of Psychiatry and Human Behaviour and Paediatrics at Brown Medical School, in the United States, will deliver a public lecture as part of the ASB Visiting Professor programme. His research focuses on the interplay of biological and environmental factors which determine developmental outcomes for children. Visit www.werrycentre.org.nz for more details.

Business School competition

See some of the world's top young business brains in action at the third annual Champions Trophy Case Competition from 3 to 6 February at the Business School. Twelve internationally renowned universities, including Auckland, will take part in the fiercely contested competition, which sees teams given a business case come up with a strategy and presentation to wow a panel of industry judges. The Champions Trophy showcases the best teams from around the world, who are invited to participate on the basis of their performance the previous year. Students, staff and the public are welcome to attend presentations. Further information is available in the events list on the University website.

Wine conference

World wine business researchers will converge on the Business School for the 5th international conference of the Academy of Wine Business Research from 8 to 10 February. Visit www.awbr10.auckland.ac.nz for information.

In this issue

- 2 | New faces
- 3 | Staff honours
- 4 | What's on

Finance industry leader on University Council



Scott St John, who has extensive experience in the finance industry, has been co-opted to the University Council.

Since 2002 he has been Chief Executive Officer of First NZ Capital, whose predecessor company CS First Boston he joined in 1993. Earlier, Scott spent seven years at Hendry Hay McIntosh.

His roles have included senior equity analyst, equity salesman, head of equity sales and head of equities. His company created a startup that successfully expanded into the European financial services industry before being sold to private equity interests in March 2009.

Scott chairs the Securities Industry Association, the body which represents the sharebroking industry. He was a member of the Capital Market Development Task Force and is on the board of the New Zealand Institute.

He is a BCom graduate of the University where he also gained a Postgraduate Diploma in Business. He is on the Leadership Committee for the University's \$100 million fundraising campaign.

Tava Lennon Olsen returns from US

A high-flying graduate of The University of Auckland will return to New Zealand after nearly 20 years in the United States to take up a pivotal Business School Chair.

Professor Tava Lennon Olsen, who grew up in New Zealand and gained her BSc Honours in Mathematics from the University in 1990, will take up the Ports of Auckland Chair in Operations and Supply Chain Management from July this year, as well as the directorship of the Centre for Supply Chain Management.

Currently Professor of Operations and Manufacturing Management at the Olin Business School at Washington University in St Louis, Tava left New Zealand after graduating in order to complete a masters degree and PhD at Stanford University, later becoming Assistant Professor in

Thriving pathway to tertiary study



Professor John Morrow presents Polly Smith, the top Arts student, with her Tertiary Foundation Certificate.

The Tertiary Foundation Certificate programme, offered by The University of Auckland since 1989, continues to prove its worth as an alternative route to tertiary study.

The TFC students have gone on to gain a total of 435 university qualifications. Two completed PhDs in 2007 in Chemistry and in Environmental and Marine Science, and there are also two PhD students currently in Obstetrics and Gynaecology, and in Molecular Medicine.

In 2009, 125 students gained the Tertiary Foundation Certificate. The Certificate qualifies them to apply for admission into a bachelor programme at The University of Auckland or another tertiary provider.

The TFC is an intensive one-year, full-time programme for those unprepared and lacking the grades for tertiary study. They take courses in Arts and Science designed to bring them up to Stage One university level.

At the prizegiving in early December for the 2009 TFC cohort held in the Whare Kai at Waipapa Marae, the Deputy Vice-Chancellor

(Academic), Professor John Morrow, said the University regarded the TFC Programme "as a very important part of its work.

"It enables students to reconsider their options and prepare themselves formally for university. In doing so they gain a range of study and attitude skills which will increase their chances of success."

TFC Co-ordinator, Stephanie Wyatt, told the graduates that in persevering they had all had to deal with the pressure and stress of academic study.

"In gaining this certificate you have proved that you are capable of that challenge. Hopefully you have felt stimulated by the learning opportunity provided by TFC, have improved your academic skills, gained in confidence, and have also made new, and lasting friendships along the way.

"I feel lucky, as I'm sure the other staff do, to have been a part of the beginning of your tertiary education and privileged to have been able to help you in some way on the particular educational and personal path on which you have embarked."



the Department of Industrial and Operations Engineering at the University of Michigan in Ann Arbor.

Her research interests include supply chain management, pricing and inventory control, stochastic games and applied probability. Tava is an associate editor for *Management Science*, a senior editor of *Productions and Operations Management*, and the topical editor for supply chain management for the Wiley *Encyclopaedia of Operations Research and Management Science*.

Pianist joins School of Music



British newspaper *The Times* called him a “disarmingly relaxed and sunny performer” with a technique “as alert and crisp as it was fast and fluent”. Now the acclaimed New Zealand pianist, Stephen De Pledge, is returning home to join the School of Music.

In February he takes up the role of Senior Lecturer in Piano, teaching piano major students and tutoring chamber music groups.

Stephen says he’s delighted at the prospect after having spent 17 years away from New Zealand. “I very much look forward to being part of the vibrant musical community at the University, and to working alongside Rae de Lisle in the School of Music’s piano department.”

Stephen studied at The University of Auckland before he headed off to London to attend the Guildhall School of Music and Drama. There he won the gold medal that launched his career.

“Stephen is a leading pianist with a fine international reputation,” says Professor Robert Constable, Head of the School, “and his addition to our ranks is quite significant for us and for New Zealand music, and will do much to maintain and enhance our international standing.”

Staff honours

Five University staff members were among New Zealanders to receive New Year Honours recently.

Professor Helen Timperley (Education) was made a Companion of the New Zealand Order of Merit (CNZM) for services to education.

Three staff became an Officer of the New Zealand Order of Merit (ONZM): Dr Robert Boas (an honorary clinical associate professor in Anaesthesiology) for services to medicine, in particular pain management; the Rev Dr Allan Davidson (honorary research fellow in Theology) for services to history; Dr Vernon Harvey (honorary clinical associate professor in Oncology) for services to medicine, in particular oncology research.

Professor Peter Hunter, Director of the Auckland Bioengineering Institute, was made a Member of the New Zealand Order of Merit (MNZM) for services to science.

Art highlights persecution



Artist Shahriar Asdollah-zadeh wielding the camera in front of a model wearing his Body Armour sculpture, one of the many exhibits at his Bahá’í Martyrs of Iran installation

Elam graduate Shahriar Asdollah-zadeh’s overtly political multimedia exhibition, *Bahá’í Martyrs of Iran* – focused on the persecution of Bahá’ís in that country – has garnered media coverage both here and internationally.

Now showing at the Whangarei Art Museum (until 7 February) alongside two other artists’ exhibitions, *ey! Iran* and *Exiles*, it’s timely that *Martyrs* should be on display again. Seven Bahá’í leaders currently face trial in Iran for their religious beliefs.

“Their trial is of major concern, not only for Bahá’ís, but also for everyone who believes in human rights,” says the 24-year-old artist. “For too long, the voices of the ethnic and religious minorities in Iran have not been heard and their persecution continues.”

Members of Shahriar’s own family were

executed in Iran for their belief in the Bahá’í faith. He migrated to New Zealand with his parents when he was four.

Shahriar’s artwork explores what protest can achieve, and combines photography, sculpture, video installation, sound, internet social networking and text messaging. Thousands of people around the world have joined in with his protest art through his website, the World Art Collective: creating awareness of the persecution of Bahá’ís in Iran (www.worldartcollective.org). Since its launch in 2008, the website has become a vehicle for raising awareness of human rights violations, injustices and persecution.

Whangarei Art Museum curator Scott Potan describes *Bahá’í Martyrs of Iran* as compelling. “It has moved people very much.”

We’re smoke free

The University declared itself smoke free in January. Smoking is now banned at all campuses, properties and outdoor spaces – and we have done away with designated smoking areas.

So from this year onwards, we can expect to work and study in a healthier, cleaner environment.

If you or someone you know wants help with stopping smoking call Quitline on 0800 778 778 or visit www.quit.org.nz



Hood Fellowships

Applications are invited for the next round of Hood Fellowships, which bring recognised international academics to the University for guest lectures and seminars, and also enable leading University academics to travel overseas and build stronger networks.

Applications close on 30 April for incoming and outgoing Fellowships which should be taken up during 2010 or early 2011. Information for applicants can be found on www.uoafoundation.org.nz

For further inquiries please contact Pramilla Andrew at External Relations. Email pc.andrew@auckland.ac.nz or phone ext 88113.

Can you guess what these are?

Trying guessing the identities of these exquisite images – the answers are below. They were taken by Dr Bryony James (Chemical and Materials Engineering) using scanning electron microscopes (SEMs). And she has plenty more endlessly fascinating pictures to share. Bryony uses the microscopes to study the structure and property analysis of “soft” materials, such as biological and food systems. “Just about anything looks surprising magnified a few thousand times,” she says. The images the microscopes capture are simply maps of electron intensity so they have no “colour” as such. Bryony colours them in as she pleases, using the Paintshop programme.

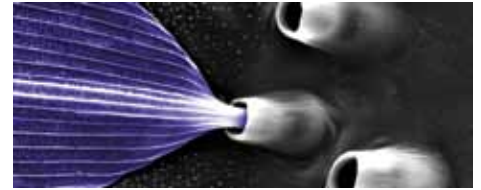
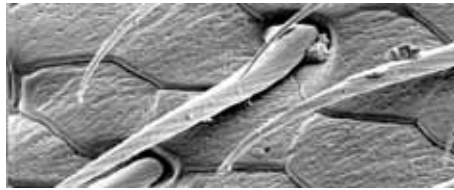
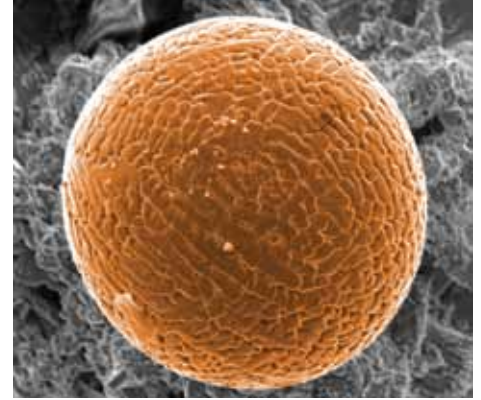
“The line between art and science in microscopy is a pretty fine one. The images on the right are really just playing at making something pretty out of something everyday, but it’s what microscopists get to do all the time.”

The University has two SEM microscopes. “Each is capable of resolving around 1.2 to 2nanometres, so they are well suited to the demands of

researchers such as Wei Gao, who make nano-rods and nano-ribbons that are only a few nanometres thick.”

Bryony’s research is done at the Research Centre for Surface and Materials Science and Chemical Engineering. Currently, she has several projects underway, including an investigation into the structural aspects of food which contribute to sensory perception (being conducted in collaboration with Plant and Food Research and Massey University).

Clockwise from top : a single spark from a sparkler; details of a moth’s wing; “Bees’ knees”, the 2.5 micron-wide hairy legs of a bee. You can look forward to seeing more of Bryony’s images on the University website soon.



What’s on

SATURDAY 30 JANUARY

Artist talk

Gregory Bennett on sound and motion. 1pm Gus Fisher Gallery. Like Len Lye, digital artist Gregory Bennett is interested in bodily kinesthetics and patterns of movement, often influenced by music and sound. Bennett, who will discuss the theories of sound and motion in own his work, completed a MFA at Elam in 2004 and is a lecturer at AUT.

MONDAY 8 FEBRUARY

University teaching and learning: An intensive three-day course

Day one: 9am-4:30pm, Waipapa Marae. A three-day intensive overview of key concepts and strategies involved in university teaching and learning. Required for all academic staff new to university teaching; highly recommended for experienced teachers as well. Enrol through the CAD website at www.cad.auckland.ac.nz (Courses and Workshops page), or call CAD reception at ext 88140 for assistance.

TUESDAY 9 FEBRUARY

University teaching and learning

Day two: 9am-4.30pm, OGH.

WEDNESDAY 10 FEBRUARY

University teaching and learning

Day three: 9am-5.30pm, CAD, Level 5, 76 Symonds Street.

THURSDAY 11 FEBRUARY

3rd Annual Conference of the Centre for Lacanian Analysis: Sexual identity

9am-5pm, AUT. Until 14 February. Keynote speakers include: Sonia Alberti: Professor of the Institute for Psychology at the University of the State of Rio de Janeiro (UERJ); Dany Nobus, PhD, Professor of Psychology and Psychoanalysis, Head of School of Social Sciences, Brunel University, London; Leonardo Rodriguez, Australian Centre for Psychoanalysis.

For general inquiries email Gail Burrows, gburrows@clear.net.nz Visit www.lacan.org.nz

Classifieds

ACCOMMODATION AVAILABLE

Apartments for rent. Call us for your rental requirements; we offer city apartments furnished/unfurnished, all sizes and prices; great rental deals for long-term leases; call Chris or Mandy on 09 303 0601 at City Sales or email rentals@citysales.co.nz or log on to www.citysales.co.nz/rentals

Stanley Bay sundrenched historic villa available long term, owner going on sabbatical leave now until November 2010. Four bedrooms, large garden plus sundeck, close to shops, buses and ferries. To view phone Thomas on (09) 445-1411 or txt (021) 025-92818 or email atho031@ec.auckland.ac.nz

Waiheke executive house. Exceptional living on Oneroa clifftop, views both directions, three bedrooms plus self-contained studio, large living spaces and decks, Sky, Broadband. Walk to shops and beach, three-minute drive to ferry.

Available mid-April until September 2010 (end date negotiable), \$650 pw. Car and/or city pad available, rates negotiable. Contact b.barton@auckland.ac.nz

Well-lit spacious studio (5mx5m) in character Ponsonby villa with access to private garden. Bed, desk and lounge furnishings. Share bathroom and kitchen facilities with mature owners. Inner city, can walk to University, one minute from Ponsonby Road Link and other bus routes. \$200 pw. Phone David on (021) 294 5735.

ACCOMMODATION REQUIRED

Professional working couple offering services of housesitting. No fee. High levels of attention and care given to house, animals, pool and garden alike. From two weeks to 12 months. We are a non-smoking, tidy couple and live a very healthy, sporty lifestyle, great for running or walking dogs. We are experienced in all aspects of house care and understand how precious the security and safety of your home and pets are. Phone Abby on (021) 444-234 or email abbyhaverkamp@gmail.com

MISCELLANEOUS

Exotic holidays: Planning a trip to Asia or Middle-East? Contact us for a quote before you book elsewhere. Serving universities for over five years. Visit www.exoticholidays.co.nz for tour options or ask us to customise or tailor-make as you wish - from a night in Dubai or junk cruise in Halong Bay or luxurious palace on wheels. Bringing you the best of Asia and Middle East holiday options. Email us at

info@exoticholidays.co.nz for our monthly ‘specials’ and attractive deals.

Māori Television and its influence on the construction of viewer identities.

Do you watch Māori Television? Do you know someone who does? Would you/they be prepared to spend about an hour as part of a focus group to discuss this? Sue Abel, Senior Lecturer in the Māori Studies Department at UoA, is doing research over the summer into the influence that Māori Television has on the sense of identity of its viewers. I am setting up focus groups of Pakeha viewers, of Māori viewers, and of those who are of non-Māori and non-Pakeha descent. Participants need to be adults, and have no close connection to Māori Television. Each focus group will be made up of 4-6 people, and will take place where and when it suits those participating. If you would like to be involved, or to know more about the project, please contact s.abel@auckland.ac.nz or phone (09) 845 5291 or (021) 385 727.

Te Wahi Ora: A retreat for women at Piha. Do you need to break? For over a decade, women have been enjoying Te Wahi Ora’s hospitality. We supply all bedding, linen, plus delicious breakfast, lunch and dinner. For more information visit www.tewahiora.co.nz

Travel. I have 12 years experience in booking all aspects of personal travel for university staff and lecturers. I pride myself in ensuring that your travel plans are sourced at the lowest possible costs and are tailor-made to your requirements. Contact Karen on Karen.embleton@mondotravel.co.nz or 940 0064 (wk) or (021) 188 7781.