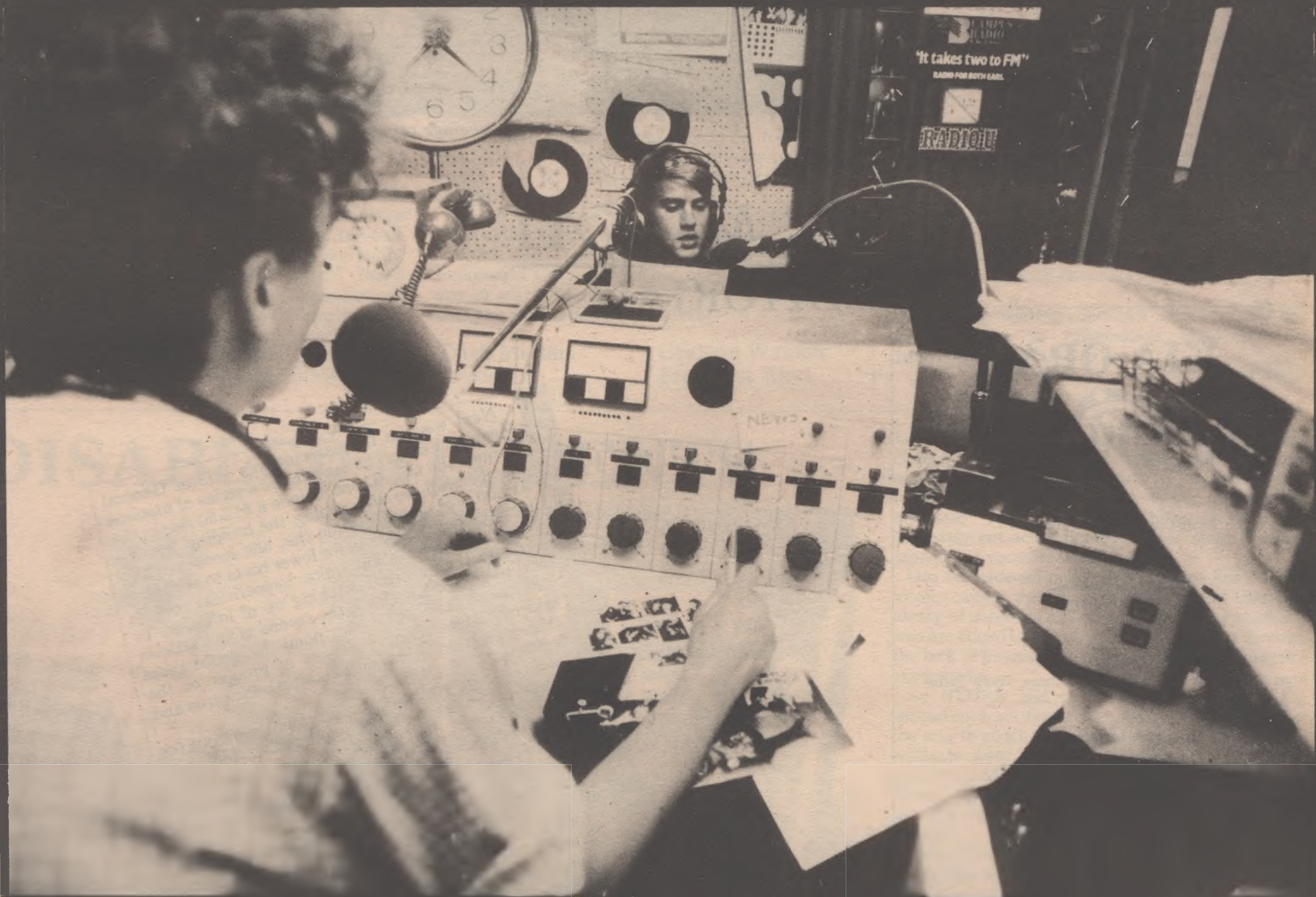


P. 4
EXEC
ELECTIONS

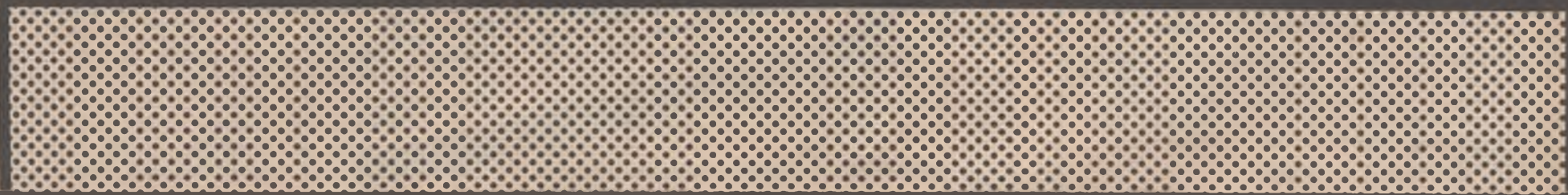
KIA ORA



Auckland University Students' Association, Volume 58, Issue 17, July 31 1984



WINTER GENERAL MEETING
WILL CAMPUS RADIO GO F.M.?



CONTENTS

NGA TAKE (Features)

Disabled Students - Where Next - 3
 1985 Portfolio Elections - 4, 5, 6
 White Man's Art - 9
 Winter Tournament News - 12
 Student Union Survey Results - 13
 Winter General Meeting Background - 14, 15

NGA KUPU WHAKAATA (Reviews)

Band file - 18
 Nga Mahi a te Rehia - 10, 11

NGA MEA TARUARUA (Regular Columns)

Te Tumuaki - 3
 Nga Wahine - 7
 Kei Konei - 7
 Nga Kai Hua Whenua - 8
 Nga Tuhi Mai - 16, 17
 Panui - 19
 Patai - 20



Smaller than average turnout at a General Meeting of the Association.

TE MOKAI EDITORIAL

KIA ORA



Editors
 Rangi Chadwick, Neil Morrison

Editorial Assistant
 Lisa Glazer

Contributors
 Anna Marsick, Elam Students, John Bates, Tracey Setter

Photography
 Birgitta Noble

Graphics
 Nick Tupara

Layout Assistants
 Karen Sidney, Kate Millett, George Thomson
 Cynthia Bandicoot.

Proofreader
 Tim McCreanor

Typesetters
 Barbara Hendry, Raewyn Green

Distribution
 Barry Weeber

Advertising
 Martin Brown

Craccum is a source of free expression and information for the Auckland University community and is not an official publication of the University or Association.

Send all mail to Craccum, A.U.S.A., Private Bag, Auckland.
 Craccum is published by Auckland University Students' Association, Princes Street, Auckland, and printed by Wanganui Newspapers Ltd., 20 Drews Ave, Wanganui. Phone Editorial 30-789 ext 840, Business 30-789 ext 841.

Next week is the association's Winter General Meeting, and on the agenda are a series of motions to raise the fees. These include a \$12.50 rise in the membership fee and raising the building levy by \$12.00. For an association that has spent so many working hours pushing for lower costs to students, this move may seem quite hypocritical, but is actually the eventual catching up of inflation. In this edition of Kia Ora is the second of two articles giving the executive's view point. No doubt these will be countered by a variety of groups, as the cliches and numbers come shooting backwards and forwards.

Out of it all, you, as members, must work out for yourselves what you believe is good for *your* association, not just good for your pocket. The propaganda will be thick and fast and it is up to all of us to pick out the good from the bad, the truth from the lies.

I'd urge you not to start by looking at your meagre holiday savings and saying you can't afford it. Start by saying 'Can I afford to be without it?': a student newspaper, subsidised cafe prices, club grants, rest and relaxation facilities etc etc. Look at all these things, and look how the association does it. Without the rise, where will the cuts be? And how will you eventually end up paying more, because they all will come back on you, and again, it's your loss.

One of the main suggested cuts is the removal of the Craccum grant, which amounts to 10c per student per edition. That puts this magazine amongst the cheapest in the country. By removing that subsidy, it stops being a *student* paper: (If I ran a paper to break even, it would be up to me what to put in, and up to me which clubs etc paid for advertising, regardless of SRC, SGM's etc) The subsidy, albeit small, means it is ultimately up to you what is in *your* paper.

Well, this has been my first crack at an editorial, and it hasn't been as easy as I thought. At the end of it all, I'd hope that you'll all go along to the WGM next Tuesday and Thursday. *Your* association depends on it.

- Daryl Webb

TE TUMUAKI

AUSA PRESIDENT



Dear Students,

As students ourselves we appreciate the increasing financial pressures students are facing. AUSA has always worked to keep students living standards at an acceptable level, through action in areas like bursaries, summer jobs, bus concessions and the provision of welfare services. At the same time the Students' Association fee has been maintained at \$40 for the past three years. However this year, the Executive has found it necessary to recommend to the forthcoming Winter General Meeting that the fee be increased by \$7.00. This would enable higher amounts to be allocated for club grants, much needed purchase and replacement of assets, and to cover general cost increases and inflation.

It is also proposed that the Building Levy be raised. The current Student Union facilities were built (with past students' contributions), for half the membership AUSA now has. They are badly overtaxed. An increase of \$12 would mean planning could get underway for expansion of these facilities. Students will have the opportunity at a future general meeting to decide exactly what development their money is spent on.

These proposals are fully explained in the articles

in this issue. We believe they are necessary and justify your support.

You will also be asked at the WGM to decide on two matters concerning Campus Radio and housing policy. Campus Radio will be asking for your support in converting to FM, and generally improving the service they provide. This will require permission for AUSA to raise a five year loan, and an increase of \$3 in the subscription.

SRC has recommended that surpluses made on the houses currently owned by the Association should be tagged for the purchase of more student accommodation. Students will be asked whether they believe AUSA should extend its role in this area. If so, an increase of \$2.50 will also be needed in the fee, to replace this income item in the budget.

Please familiarise yourself with the issues, and come to the Winter General Meeting, on Tuesday 7 August, and Thursday 9 August, at 1pm in the Recreation Centre. Whether or not you support any (or all) of the proposals outlined, it is important that you make your views known.

Trish Mullins
President

Graham Watson
President Elect

NGA KAIWHAKAHAERE EXEC REPORT

The Executive Committee meeting last Wednesday spent a great deal of time discussing the proposed fee increases that will be decided at the Winter General Meeting. The increased fee would cover general cost increases, support for Campus Radio, actioning the Housing Policy, and increased grants to clubs. There is more information about the W.G.M. in this and the previous issue of Kia Ora.

At N.Z.U.S.A. elections, Auckland delegates will now be voting as a bloc, so Auckland's voting power will not be diffused. Votes will only be split if Auckland delegates cannot agree on a candidate.

Only in it for the money? Association Secretary Bob Lack has been offered a further three years on the job, and urged to accept a salary rise, something he has consistently declined. What a nice chap eh.

The Paper Cups/Polystyrene Cups debate is destined to arise at a Student Representative Council in the future. For all of you concerned students (of Mayfair), Environmental Affairs Officer Barry Weeber can provide you with plenty of information about the issues.

Shadows has this year been running behind budget, with higher costs and lower income than expected, so price increases were planned. However the People's Government anticipating this move have imposed a price freeze.

Graham Watson was appointed as a student representative on the University Senate. There are five student reps on Senate, a body of over 120. The number of students on Senate is decided by Council. On Council there are two students out of twenty one.

This Exec meeting continued until 1am, but the peoples right to information must not be frustrated by the last bus home.

- Philip

DISABLED STUDENTS



There are probably more signs around campus indicating that this or that doorway or toilet is accessible to the disabled than there are disabled people on campus.

Part of the NZUSA election campaign on access to tertiary education has been the question of access for the disabled.

For three years now, NZUSA has been convening a group called Further Education for the Disabled (FED). The group involves Departments of Education and Health people, representatives of tertiary bodies, the N.Z. Crippled Children's Society and Rehabilitation International and a parents' representative. In 1982 the group published a book 'Further Education for Disabled People'. This looked at the

facilities and provisions for disabled people at all tertiary education institutes. Our intention was manifold:

- to alert the disabled to the provisions already in existence which are sometimes not utilised.
- to alert policy makers to the need to offer a full range of services for all disabled people.
- to alert both groups of people to the need to consider ways in which we can increase the very low percentage of the disabled in tertiary education.

Even before industrialization, our stereotypes of

the disabled reinforced the notion that they were 'clumsy morons' - quite incorrectly. But with the increase in disabilities caused by industrial and motor accidents we have a larger number of especially younger adults whose disability is obviously not accompanied by loss of educational capacity or vocational ability.

Our educational policy and practice has not yet totally caught up with this however and there are plenty of potential and current university students who are edged out of the education system through the lack of progressive educational policy, practice or provision.

So NZUSA and the FED group employed a second contract researcher, Jenny Neale, to look at the way in which the school system filters disabled students out: by lack of support mechanisms, services and counselling. The result is *Where Next?*, an examination of the way in which parental expectations about the tertiary education potential of their disabled fourth form son/daughter leads to a self-fulfilling prophecy about the academic/vocational capacity of these people.

For example, it is clear that parents and teachers both land up influencing disabled fourth formers to choose fifth form subjects which prevent them from taking up apprenticeships or going on to further education.

NZUSA believes that *Where Next?* helps to show that access to university is not just dependent on money. The attitudes held by parents, teachers and classmates, and the way we structure society prevents many people, disabled or not, from benefiting from a tertiary education.

It shows that selection for university takes place not at sixth and seventh form but by decisions made about types of subjects students take and the schools they attend. These decisions *finish* (not start) in fourth form and may start much earlier in the school, family and neighbourhood. It is a reminder to NZUSA that access to education is not just an annual visit to local senior classes or sticking blue and white pictures of wheelchairs on toilet doors.

Copies are available from NZUSA.

Mike Waghorne
NZUSA Research Officer

1985 PORTFOLIO ELECTIONS

WOMENS RIGHTS OFFICER



BIDGE SMITH

I was elected as WRO in the second term '84. I have been working on Sexual Harassment Grievance Procedure, Sexual Harassment Survey and Rape Awareness week. I've also been working with Parent Action Group, women making a video on sexual abuse of children and liaising with the Men Against Rape Group.

I feel that the WRO position should be run by the womens rights collective which is open to any women students. In this way women with a wide variety of political, social and cultural interests can decide what areas of work should be covered by the womens rights officer. In the month that I've been in office I have been working closely with the collective. We have had reasonable success in involving women of differing interests and representing a range of attitudes.

I am standing for re-election because I want to continue with the work the collective has begun.

I would like to be actively involved in the Students Association to promote womens rights, ensure that the resources available to women are made full use of and to encourage recognition of the valuable contribution that women make to the campus community.

CULTURAL AFFAIRS OFFICER



MARK ALLEN

Well as it says above, I'm Mark Allen, I'm 22 and this is my 4th year at Varsity (Dammit!). I failed Engineering School twice and am now failing a BSc. Extensively, I'm standing for Cultural Affairs Officer because I believe that I can do the job and do it well. I have a lot of experience extending from Double Decker Bus Tours to the Vineyards during Orientation 83, to the Raft Race in Capping '83 and '84. I, along with Philipa Sheehan, Richard (Frustrated) Foster and Steve Ormsby, ran Capping '84. As CAO for the last 7 or 8 months, I have 'done more work than any other CAO for the last five years', (so I'm told).

So for this year, along with Capping I have organised numerous free concerts, an Artists Exhibition space in the Little Theatre, I resurrected (Rise, Brother Rise in da name of Heaven!), the Film Festival and for it, managed to organise a generous 'Support' deal from the National Bank so the door prices could be kept down. At present the Photo Society and I am running a photo Comp and in the pipeline are a Radio Drama and Short Story Competitions for Campus Radio and Kia Ora (Craccum) respectively.

Just finished, as you read this is the Cultural Mosaic and a tour by the NZSAC of Te Ohu Whakaari.

For next year, I plan to run the same kind of events probably in a different order, plus some new ones, including Activities workshop for prospective Organisers. I also plan to shift the emphasis of the Cultural Mosaic from being a purely Cultural Festival to a more broadly based Arts/Cultural Festival. Clubs will be invited to brainstorm any ideas for the festival and expected to take part.

In summary I have: the Experience, the Keeness, the Energy. So please cast ya vote for me!

If you wish to come and talk to me about any of this, I'm usually on Campus everyday and in my office (1st Floor - Room 111).

SRC CHAIRPERSON



KIRSTEN THOMPSON

My name is Kirsten Thompson, I'm 20 and in the third year of a BA/LLB. For my Arts degree I'm doing a Double Major in English and History and intend to go on and do a Master's Degree in one of the two.

Weekly SRC meetings are a vital part of AUSA, where our Campus policy is debated, questioned and instituted. It is an important forum where all students have the right to vote and speak. For this reason I think the position of SRC Chair is a vital one, in that the Portfolio entails a responsibility to publicise SRC, and to get more students involved. It should be a forum for lively and informed debate, where the ordinary student should not be intimidated from participation.

My experience includes:

- SRC Secretary 1983
- Student Rep - German & History 1982.
- Student Rep - English - 1983 - 1984.
- Membership of Education and International Affairs Committees 1983
- Active involvement in the Womens Rights Collective, and the Sexual Harassment Grievance Procedure Committee.
- AUSA delegate to February Workshops and May Council.

I have the experience and capabilities to make SRC's the forum which all students can, and will want to participate in.



RAYMOND WHEELER

As a third year student who started varsity in 1981, I have seen a great change in much of the policy of the AUSA and the people affected by these policy changes. Recently, isolated groups on campus have been given status disproportionate to their numbers. It is obvious from the recent AUSA election results that the average student wants a change towards independent candidates running the AUSA. Participation is the key.

The SRC is an important medium for change but requires student involvement to engineer these changes. Involvement can only be fairly obtained if SRC meetings are interesting, topical and particularly if students are preadvised of the issues at current SRC meetings. Upon being elected I intend to tackle these problems by:

1. Advertising the issues in lecture theatres on the day of the current SRC meeting. This should increase student numbers attending, and hence obtain a far more representative student view of AUSA policy, which can then be prevented at EXECUTIVE level.
2. Continue the idea of a guest chairperson.
3. Arrange the minutes so that controversial issues can be tackled early in the meeting. I do appreciate that some of us have lectures to attend, and it has been the case in the past that important issues are left until last so that many interested students were unable to vote on them.

SRC Chairperson also has an important vote on the Executive. Clearly here, an independent executive can vote, catering to a more representative student view.

Although I have never held a position at varsity, I feel that I have the capabilities to operate efficiently as SRC Chairperson. Remember, you can't complain if you don't vote. So vote, and vote independent candidates for a fairer representation on campus.

SOCIETIES REPRESENTATIVE



TRISH SHAW

I am a 3rd year BSc student majoring in Chemistry. I feel my experience on the Societies Grants Committee, Sports Grants Committee and the Education Committee will be very valuable for this position. Over the past few years I have also been a member of a number of University and outside clubs.

In this position I think it is important to be available to give advice on any club matters and if elected I shall endeavour to help students get the best value from their clubs.

ALEX CORNFORD

Hi - I'm a part time second year science student. I'm standing for societies representative because I feel that there is more to varsity than essays, labs, study, swot and exams.

Besides being a fun loving student I have experience within clubs organisation and I am an S.R.C. rep on the sports grants committee. I am a keen pub crawler (naturally for a T.T.N. member) and have also helped organise several cafe dances.

If elected I will -

- Assist any societies wanting help to organise club functions.
- Work for the 1985 Pub Crawl
- Campaign for lower bar prices
- Ability to co-operate with other executive members.

MEDIA OFFICER



**JUDY
ANARU**

Kia Ora, my name is Judy Anaru. I'm doing a BA in English and presently I'm involved in dance and theatre and most importantly I'm the co-news Editor of Campus Radio.

This year we have made a lot of progress towards establishing Campus Radio's new services as really useful sources of information for students. We now run four news bulletins a day on weekdays and we also feature topical interviews and student information in our Information Hour from 6-7.

This involvement has taught me a lot about Student Media, its problems and potential: that's why I'm running for Media Officer.

Campus Radio and Kia Ora are linked to the Students Association and are here to voice student concerns and interests, they can do this all sorts of ways. As Media Officer I would take my lead from Kia Ora and Campus Radio Staff, helping them to develop their potential as they see best as long as it continues to voice student concerns. Campus Radio is working towards changing to FM next year. I support this as Campus Radio, unlike existing FM stations would exploit the full potential of stereo sound and so provide even more of an alternative to Middle of the Road Radio. Kia Ora this year worked at representing minority groups that are unrepresented in other media. University is the place for Alternative Media.

I believe I have the experience necessary to be the Media Officer and that my own skills and values would be an asset on Exec.

A vote for me on August 1st and 2nd is a vote for effective Media on Campus that means something to students and has relevance to those outside the University.



**KERRY
HOOLE**

Background: I'm a fourth year BSc/BA majoring in Computer Science. In my four years at Auckland University I have been involved in the organisation of many events (including Orientation 83 and Capping 83 & 84) and several Clubs (including Yacht Club (1981), Scotch Club (83), Aurora Television (83-84) and the Video Club (83-84).

Aurora Television is a club established to set up a closed circuit television station on Campus. It was to show mainly Music Video Clips and alternative cinema to be paid for by advertising. It was intended to start broadcasting during Orientation 84, but due to legal and financial problems this fell through.

My Policies are:

- Pushing for a new F.M. Transmitter for Campus Radio. Campus Radio is presently hiring a transmitter for \$18,000 a year when a new FM Transmitter to buy only costs \$27,000.
- Encouraging the Unification of Craccum (Kia Ora) and Student News to produce an Informative, Entertaining, Profitable, Student Newspaper
- Further investigation into the possibility of setting up a Closed circuit T.V. Station (Aurora T.V.) on Campus, funded by advertising.
- Bring a better range of entertainment to Campus.
- To encourage Clubs to produce better and more publications particularly to encourage more student participation.
- To obtain more recent movies for showing on Campus more regularly (say Friday & Saturday evenings).

Next year I will be doing part time Varsity so will be able to devote the time required to do the job well.

As a last note this is Your Association so get out and Vote on the 1st and 2nd of August.



**GRANT
HARVISON**

In standing for the position of AUSA Media Officer for 1985, I have made a commitment to give Student Representation in an area of AUSA which I feel has a lot of student involvement.

I am very concerned that this portfolio has progressively become a 'closed shop' affair insensitive of the feelings of the Association members, and, with the expenditure in this area running at \$73,000 or \$6 per member I feel value for money spent is my prime objective.

While having not been active in AUSA politics previously I believe I can bring some considerable experience to this portfolio, having been involved in the inception and production of the alternative student newspaper Campus News.

My involvement in this project has opened my eyes to the growing dissatisfaction of students with 'the way things are run' and the potential of Craccum as a representative student paper which could make a profit rather than a \$37,890 loss.

It is in these areas that I believe I can act on behalf of the students in their best interests.

NATIONAL AFFAIRS OFFICER



**MARK
TOWNSEND**

This is my fourth year at Auckland University, during which time I have been nominally studying for a B.Sc in Computer Science. I have been involved in various activities during this time, including Orientation '83, Capping '84, A.T.V. '83-84, and I have been Treasurer of the Video Club for the past two years.

I have also followed student affairs closely over this time, regularly attending S.R.C. and being actively involved in issues of student and general importance.

I believe that the contribution I can make to student affairs as N.A.O. are significant. I see the most important areas as being the Anti-Racism Movement; Gay/Lesbian Rights, Unemployment, Anti-sexism, the Anti-Nuclear Movement and Workers Rights.

In 1985 we have a new government with which we have to apply pressure to ensure that they keep their election promises, and we need a concise and effective lobby for larger education spending, student housing and jobs etc.

I believe that I can provide the necessary skills that are required to motivate people to a level of awareness, so that we are heard where it is important. I also believe that by holding a moderate stance on issues, which in the past have been looked on subjectively, will enable a greater amount of constructive work to be done on truly important issues.

SPORTS OFFICER



**BERNARD
KENNELLY**

Hi, I'm Bernard Kennelly, the current Sports Officer, and I'm standing for re-election in this position for 1985. Having had the experience of holding the job for this year I feel I will be able to make an extremely competent go of it next year. I have built up a good working relationship with quite a few of the clubs and this will be needed next year especially with an early Easter Tournament at Massey, and the Winter Tournament being held here in Auckland.

I represent the sports clubs on the Executive and at SRC. I'm a student representative on the Recreation Centre Sub-committee as well as being Chair of both the Sports Council and the Sports Grants Sub-Committee. I haven't used the Sports Council much this year but next year I hope to revive it and use it to help get a better deal for sports clubs on campus. Over the last two years the money allocated to sports clubs has not kept pace with inflation except the fact that both have fallen in the last few years. I have already taken steps this year to rectify this downward trend on money allocated to Sports Clubs for next year.

So for Continuity, Experience, Independence and Results on Exec vote for Bernard Kennelly. (SPORTS OFFICER 1984) for SPORTS OFFICER 1985.



**MARK
PATTENDEN**

Hi! I'm a 21 year old, 4th year, Chem and Mats student.

The reason I'm standing for N.A.O. is that I feel that all student money should be spent on students, not other 'political activities' that the majority of students don't agree with. The 1983 executive has not done this.

Policy Points:

- no funding for the above 'political activities'
- funds for student issues: summer unemployment, increased bursaries, housing.
- lobbying Central Gov't for increased varsity funding in: Research & Recreation facilities, better student access especially overseas students & lower socio-economic classes of students.
- to closely examine AUSA's role in NZUSA i.e. are students in Auckland getting value for money?
- no nukes in N.Z.!!

So my policy stance is one of consultation with as many student groups as possible before a decision is made. No one pressure group will get its way. The majority of students can have a competent N.A.O. who is not aligned to any clique group if they vote for me.



**PENNY
YOUNG**

I'm a 2nd year Arts student who wants to see a really positive participation of students in issues

Continued over page...

that affect you. I've been involved in many association activities over the past 2 years including co-ordinating the Anti-Racism Movement, and participating in the anti-nuke and education campaigns.

The position of N.A.O. is an important one on exec. It is constitutionally defined as dealing with the internal affairs of New Zealand, both those which directly affect students as well as wider issues.

I'm standing for NAO because it involves areas that I'm personally interested in. These include the serious problems that many students and other members of the community face, for example: Housing. Students live in grotty accommodation. There are people who are homeless; and there are enormous queues for state homes; UNEMPLOYMENT, affects students (6,000 were unemployed over summer and graduate unemployment is about 8%) as well as over 110,000 N.Zers who are presently unemployed. I feel all students should have the opportunity to get involved in campaigns to combat these problems. Racism is an issue which is really important especially in New Zealand because we have a myth of harmonious race-relations that is constantly perpetuated in our society. The NUCLEAR threat is a national issue as well as an international one and can't be ignored. As well as that, womens & gay rights are constantly being attacked both on campus & in the community.

At university, students have a unique opportunity to hear different perspectives about these. I think that the job of N.A.O. is to provide resources and information and to encourage the involvement of students. While recognising how hard it is for interested students to get involved because of academic workloads, education at university isn't just the formal part of sitting in lecture theatres.

Another important aspect of N.A.O. is as an exec member who represents students. I would aim to do this through continual contact with as many students as possible and also by working closely with the other exec members, acting constantly in the best interests of students.

I'm experienced, I'm interested and I'll work for you and your Assn.

INTERNATIONAL AFFAIRS OFFICER



JANET COLE

I'm a second-year student majoring in English and Political Studies. I originally got involved in

ISHI STUDENTS

15 students of ISHI can be welcome guests of the Te Awamutu Jaycees. For a fun and culture live in weekend from the afternoon of the 17th August to the evening of the 19th August.

Your only cost is the bus fare of \$19.20 return. For further information and booking please telephone Mrs Bickler on 557-324.

students association activities last year with CND marches and later on with the unemployed people's festival and helping to run the crisis centre for unemployed students over the holidays. This year, I helped to organise anti-nuclear activities, forums and displays on New Caledonia and South Africa, and publicising overseas students' problems. This involvement meant I went as an International Affairs delegate for NZUSA May Council. This experience makes me well-suited for the position of I.A.O.

This term, I have been involved in AUSA' priority campaign on the elections and access to university and student participation in the Beyond ANZUS Conference. After leaving school, I spent a year in Malaysia which was tremendous in terms of seeing beyond our insular shores. I believe that the most important role of the IAO is to organise events, forums and displays to publicise what's happening internationally

There should be more student involvement and input into international affairs activities to ensure our association is truly representative. As IAO I will work to keep students involved and informed.

WELFARE OFFICER



COLIN PATTERSON

I have been Welfare Officer since March and I am standing for the position for 1985.

As Welfare Officer I have:

- Pushed for a more active role by the University in funding student accommodation.
- Pushed for stronger university opposition to possible cuts in welfare services.
- Pushed for a dentistry service on campus.
- Strongly opposed substantial increases in the Welfare levy.
- Assisted in the formation of COFF - an anti-smoking group on campus.
- Pushed for a subsidised dental service on campus.

All these projects are ongoing and require continuity if results are to be achieved. I have demonstrated this year a commitment to the real welfare concerns of students. I have been and will continue to be an active and independent member of Executive. I also will be open and accessible to students and willing to discuss what Executive is doing (or not doing) and what I am doing (or not

doing) as Welfare Officer. I will also make the Welfare Committee more active and get greater student involvement in welfare issues.

I have proved this year that I am a competent and effective Welfare Officer. With your support I can be even more effective in 1985.

ENVIRONMENTAL AFFAIRS OFFICER



MATHEW KINDLEY

I am a third year BSc student majoring in botany/ecology. It is not just my academic interest in ecology that makes me want to stand for E.A.O., it is also my concern for the environment. I am a committed conservationist.

I have helped set up the university branch of NFAC and I have been involved with the environment group.

Currently I am co-vice-chairperson for Auckland NFAC and through this organisation I have access to a wide range of information and contacts in other organisations.

What I hope to do if elected is to represent student feelings when it comes to submissions and lobbying on environmental issues. I also feel that education is perhaps the most important role of the E.A.O. and to this end I hope to organise and advertise meetings of interest. I also would hope to write numerous articles on a wide range of environmental matters for Kia Ora.



JOHN KIRKMAN

I am a third year BSc student running for the position of Environmental Affairs Officer on next years Executive.

Next year I shall only be doing a part time course to finish my degree and feel I will be able to devote a large amount of time to the position.

When elected to the position I shall endeavour to

- Instigate moves to beautify the student association buildings and surroundings to provide a less depressing atmosphere for students to relax in.
- Lobby the government on environmental issues important to students such as lead free petrol, nuclear power and nuclear free zones, recycling etc.

Around University I have been involved in last years orientation, capping and winter tournament as well as the running of several dances for the club of which I am secretary. When elected I will not only be interested in my portfolio but also in providing a better social life and better representation on exec for all students.

Harborne & Arthur Ltd.

music specialists
with student discount.
Ph 790-960

Featuring

with your 10% disc.

52 High St. University's closest music shop.

THEATRE CORPORATE

14 GALATOS ST, NEWTON
Bookings Ph 774-307

Mon & Tues. 6.00pm. Wed-Sat 8.00pm
SHAKESPEARE'S

THE WINTER'S TALE

The fantastic fairytale of love, jealousy and laughter.

Sponsored by Fletcher-Brownbull

STUDENT CONCESSIONS



NGA WAHINE

RAPE ►

(A poem as reminder that although Rape Awareness Week has been and gone, rape is a continuing fear for women)

There is a cop who is both prowler and father:
he comes from your block, grew up with your
brothers,
had certain ideals.
You hardly know him in his boots and silver
badge,
on horseback, one hand touching his gun.

You hardly know him but you have to get to
know him:
He has access to machinery that could kill you.
He and his stallion clop like warlords among the
trash,
his ideals stand in the air, a frozen cloud
from between unsmiling lips.

And so, when the time comes, you have to turn
to him,
the maniac's sperm still greasing your thighs,
your mind whirling like crazy. You have to
confess
to him, you are guilty of the crime
of having been forced.

And you see his blue eyes, the blue eyes of all the
family
Whom you used to know, grow narrow and
glisten,
his hand types out the details
and he wants them all
but the hysteria in your voice pleases him best.



You hardly know him but now he thinks he
knows you:
he has taken down your worst moment
on a machine and filed it in a file
He knows, or thinks he knows, how much you
imagined;
he knows, or thinks he knows, what you secretly
wanted.

He has access to machinery that could get you
put away;
and if, in the sickening light of the precinct,
your details sound like a portrait of your
confessor,
will you swallow, will you deny them, will you lie
your way home?

Adrienne Rich

PEEPING TOMS PERSIST ►

A court case in Hamilton at the beginning of the
month dismissed a 20-year old university student,
Shane Major, who admitted climbing on a pipe to
get to a window to look at a woman taking a
shower. Judge Green found that there was no law
against peeping Toms in daylight. People
undressing in their homes in the daytime have no
legal protection because there is no law against
looking through a window into a private home as
long as it is daylight.

"All the youth wanted to do was look at a woman
in a state of undress," Judge Green said. "The
defendant, who in my view acted very badly, seems
to have not breached the law."

PREVIEW ►

A woman pushes a bothersome man under a tube
train after seeing an offensive snuff movie.

A prologue delivered by a get-rich-quick
pornographer cuts to a dinner party peppered with
dirty jokes. The lives of middle-class couples are
changed irrevocably as the wives growing anger
against pornography pushes them to the limit.

So goes the upcoming play, *Masterpieces*, to be
staged at the Mercury Theatre next month.
Written by Sarah Daniels, one of Britains top
young playwrights, the play is described as
"powerful and uncompromising". How will the
Mercury's grey-haired, fox-fur set cope? Turn up
next month at Mercury Two (from August 1-8) and
see for yourself!

KEI KONEI

CAMPUS NEWS

POLITICAL DOUBLE DEALING ►

At a staff/student meeting in Political Studies on
the 20th of July the motion was put by a student
that, 'In line with the democratic principles in this
department, the pink cards on which student
records are kept should be freely accessible to the
student concerned, at their request.'

These records were said to contain not only
academic results, but character assessments of the
students by the staff. The records were said to be
used for testimonial purposes but they are also
used by some staff members to assess students
they have never had before. The staff have free
access to all student's pink cards which begin at
stage two on.

The staff vigorously rejected the student motion
giving various reasons, such as, if students had
access the records would become bland and
uninteresting. Another argument was some
students may become upset at the comments made
by staff who had written about them on the
understanding that students would not see them.

It is thoughtful of the staff to consider student
feelings. However, it is ironic that an invasion of
privacy should be kept secret by the staff at a time
when the Association of University Teachers have
negotiated with the students to have access to the
hot and cold files. Staff are now sent files on them
and are entitled to include comments should they
question the accuracy of the files. These double
standards are unacceptable in the Politics Dept.
and any other department who operate a secret
assessment of students.

NOT IN THE REALM OF WELFARE ►

Some weeks ago the Students' Association made
a submission to the University seeking the
establishment of a grievance procedure to deal
with incidents of sexual harassment. Although this
is clearly a matter of student welfare, the
University saw it primarily as something affecting
staff rights so requested a report from a special
subcommittee of the Staff Appointments
Committee.

We are told that this report has now been
prepared, but that it is not yet available for
consideration by students or even by the student
President. Apparently we must wait until it wends
its way through the committee structure up to the
Education Committee - a process which could take
weeks. Because of this and because of concern that
students' interests may be overlooked, Welfare
Officer Colin Patterson asked for the matter to be
included in the Agenda for yesterday's meeting of
the Student Welfare Committee. The Registrar
declined to do this, stating that it would be
'inappropriate'.

We would be willing to make a small bet that if
anyone can invent a financial aspect to the
question it will be seen as thoroughly appropriate
to take it to the Finance Committee!

MASSEY STAYS IN ►

Another communication received last week came
from Palmerston North. It reads:

'Sanity prevails
progressive never fails
Massey won the day
to stay in NZUSA
motion defeated
Chalmers' and Shephard's ego depleted
Kia kaha.

The Silent Majority'

We gather that Messrs Chalmers and Shephard
are Massey based allies of our Philip Ross and that
the occasion for celebration was the defeat by
about 250 votes to 50 at an M.U.S.A. General
Meeting of a motion to withdraw Massey from
NZUSA.

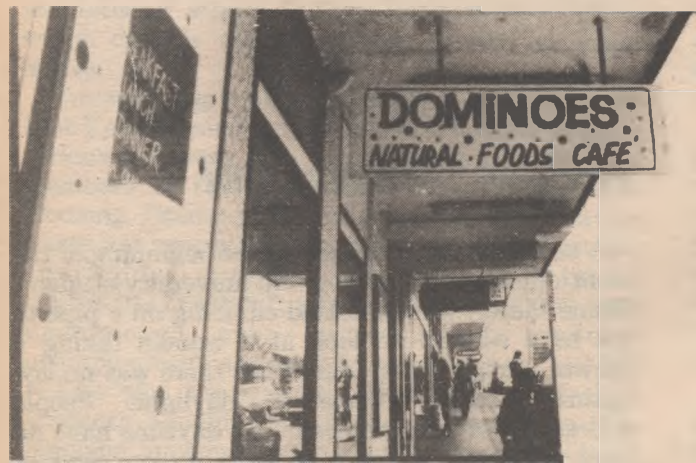
SCIENCE AND SOUTH AFRICA ►

At the last meeting of the University Council
student members Trish Mullins and Stephen
Mitchell raised the question of University contact
with academics from South Africa. The immediate
cause of concern was a lecture by an American
biochemist who teaches at a South African
university. The council asked for reports and will
consider a general policy at a later meeting but
newly elected Pro-Chancellor Judge Mick Brown
suggested that academic freedom should extend as
far as permitting lectures by academics who were
members of the Nazi Party.

A small demonstration took place at the lecture
and subsequently six of the eight senior members
of the Biochemistry Department have written to
convey their sympathy with the demonstrators'
stand and to 'commend the responsible nature of
their protest' which they felt 'was all the more
effective as a consequence.'

NGA KAI HUA WHENUA

FOOD AND HEALTH



DOMINOES ... THEORY AND FACT

Dominoes is a natural foods cafe in Lorne St. It has a refreshing selection of unadulterated foods which look great and taste really good too - plus there's plenty of selection. For a snack there are many slices and cakes of the 'natural' variety available, ranging from soybean cake to raisin-oat slices and muffins. There are savoury snacks which include moa eggs and quiche which go well with the four varieties of salad they have.

There's an impressive range of blended drinks to be had: both the 'solo' variety such as apple, grape and carrot juice and combination blends including fruits yogurt, honey and tofu. There are also hot drinks which include carob, chocolate, real capuchino and chocolate/coffee mixes. All the drinks range between 70c and \$2.00.

The cafe provides not only for the light snack but also for a meal - not a huge dinner the equivalent to your Mother's roast, but the type of meal which leaves you feeling comfortable and satisfied that you've got your \$3.50 worth which is the most expensive meal available. The sort of food which the menu advertises includes pita pockets with rice balls, and shepherd's pie - their way.

The desserts are unique to the cafe such as the homemade icecream and yogurt pie. They sit on the counter along with all the other endearing goodies such as the spinach and fetta turnovers, biscuits and cakes. The place is quite laid back and has red wooden tables and chairs around the room and outdoors in a small courtyard area behind the cafe. The service is also laid back so if you're in a mad rush between 12.00 - 1.30 it wouldn't be the best takeaway service available, but it is the right atmosphere for a relaxed snack.

There's the inevitable cluttered noticeboard for anything you may wish to advertise, promote or bemoan and on the other wall there is an interesting looking large wall hanging which could symbolise virtually anything or nothing at all depending on your imagination. There is always some kind of music, varies between obscure and UB40'ish but it all adds to the total feeling of informality and relaxation.

The food is to be recommended so go down the hill and try it out. You'll probably find yourself going back plenty more times.

- Tracy Setter

CHAPLAINS' CHAT

CHANGING SOCIETY



Chaplin's ~~chat~~ ostrich

What is your purpose in being at University? Much university education is not strictly vocational i.e. doesn't relate directly to the job you will find after graduation. In fact, it is becoming increasingly less likely that many students will find jobs. With this in mind, what is the value of a university education as against, say, a trade such as plumbing?

University education in particular teaches a method of approaching problems, identifying basic elements, analysing patterns. The content of problems is not essential, since most will lie outside the scope of formal university education. Thus accurate analysis will lead to an appropriate solution.

Few students can directly affect the social structure, since the present structure isolates intellectuals from effective participation in, or involvement with, the bases and processes of socio-economic life. However, this relative isolation permits students to evolve a critique which takes more account of the overall forces shaping society than can be acknowledged by those involved with those forces.

This in turn entails a responsibility on students to use this critique as an instrument in changing society: to remain passive is to be no more than a parasite on the existing system.

- E. Aldiss for the University Chaplaincy

catering notebook

REMEMBER
THE
RESTAURANT

OPEN
5~8pm



- * Varied A' la Carte Menu
- * Quiet, pleasant surroundings

NELSON CITY COUNCIL GRADUATE ELECTRICAL ENGINEER

Council is looking to appoint a Graduate Engineer to the position of Assistant Electrical Engineer within its Energy Division. This Division is responsible for the distribution of electricity and LPG. This position offers:

- * Experience suitable for registration.
- * Initial responsibility for the testroom, workshop and project work.
- * Opportunity to take responsibility early in your career.

Applicants should be:

- * Graduate Electrical Engineers
- * Self motivated

The Nelson region enjoys an agreeable climate and offers opportunities for a wide range of outdoor pursuits, such as skiing, tramping, and boating.

A Job Description, Conditions of Appointment, and Application Details required must be obtained from the Personnel Officer, P.O. Box 645, Nelson, with whom applications close on Friday 24 August 1984.

THREE STUDENT VIEWS OF ART SCHOOL

M U R M U R I N G S

We would like people to note that these perspectives are not representative of all Elam students. However these views written by Elam art school students do pertain to many experiences not only of ourselves but of other students who may wish to remain anonymous due to fear of victimisation.

For six months I have been in daily contact with a select group of adults I would, in any other situation, avoid. With varying degrees of intensity, the prevalent attitude among tutors to date has been a mixture of authority, superiority, sexism, negativism and egotism. No doubt, there are exceptions. I look forward (somewhat sceptically) to meeting them.

Why this attitude? Is it because we, the students, produce nothing that warrants a word of encouragement or praise? Or is it that the tutors are simply not interested in our interpretation of assignments set by them? Have 1st years nothing of value to contribute?

The highest praise bestowed on us so far has been "you're a ratshit lot" and "they seem to be lacking something". I return the compliment.

Tutor-time, one assumes, must be measured by quality as quantity is negligible. Limited interaction with tutors in 'group' times seems to have settled into a regular routine of disciplinary 'lectures' — hardly inspiring in context. Lateness, attendance, attitudes to work — these are our responsibilities to accept or otherwise. Our tutors task is to teach. Dare I say ... to motivate!

My expectations of Elam are not extreme. They are fairly basic to any effective teaching institution. I expected:

- ▶ the provision of learning situations that extend and develop awareness of individuals strengths and abilities: in art, not time-keeping.
- ▶ two-way communication *while* work is in progress.
- ▶ a co-operative working environment through sharing of ideas and expertise.
- ▶ recognition of problem areas and constructive problem-solving methods.

So far, these expectations have not been met.

My observations are not unique. Students from every year have offered advice on survival methods. It ranges from "flatter them" through "play it their way, even if you don't like it" to "don't let them know what you really think — especially if your views don't fit the conservative outlook." In other words, as a potential artist, with strong personal convictions, don't be HONEST if you want to last the course.

I came to Elam with an enthusiasm for art. My major source of encouragement and help so far has been from other students. It is necessary that my energies be channelled into my art rather than being diverted into dealing with negative attitudes which affect my own, and fellow students work. Until we have a system which functions to meet the needs of the students rather than the hierarchy I will not be convinced that Elam offers much more than expensive equipment.

Elam is a bastion of the white man's art. In Elam there is no catering to Maoritanga or the Arts except as a theory paper 'Oceanic Studies' which is undersupported by the establishment.

Elam's stance towards the crafts is an uncomfortable one on its part and this unease is seen in its regard of the Oceanic Arts and more widely in its regard of the arts of other cultures.

By contrast its acceptance of Naive European folk art and African carving is more enthusiastic as a result of modern art's validation of them. Hopefully things will change.

Elam students attending a meeting to discuss their grievances.

As a male student I am strongly represented by the lecturer contingent. Out of five departments — printmaking, photography, sculpture, painting and design — there are only two women, both part-time.

Yes, it would be very easy to affiliate myself with this scheme of male dominance. It is possible to find some sensitivity of feeling in a few of the lecturers

However from the majority of the other male lecturers I find a negative violence of apathy and boredom.

It grates me to think that such lackadaisical people reap thousands of dollars each year whilst students who wish to learn are at the other end of the financial scale.

Intimidation of sex affects not only women but also men here at Elam. These male lecturers are very logical, so logical in fact that they, like many men, repress their own feelings and cannot find it in themselves to accept the feelings expressed by the students in their work. Yes, they expect us to have the same rationale as themselves and to this end I cannot reciprocate any respect — not that any is given in the first place.

A friend told me the other day of a male lecturer who upon finding out that a student of his was gay, went up to him and said 'We don't like your sort around here'. This intimidation of macho verbal violence resulted in that student leaving the school. So heterosexism thrives at art school.

With such a dominance of macho-mania however passive or aggressive I clearly feel that this school teaches students to:

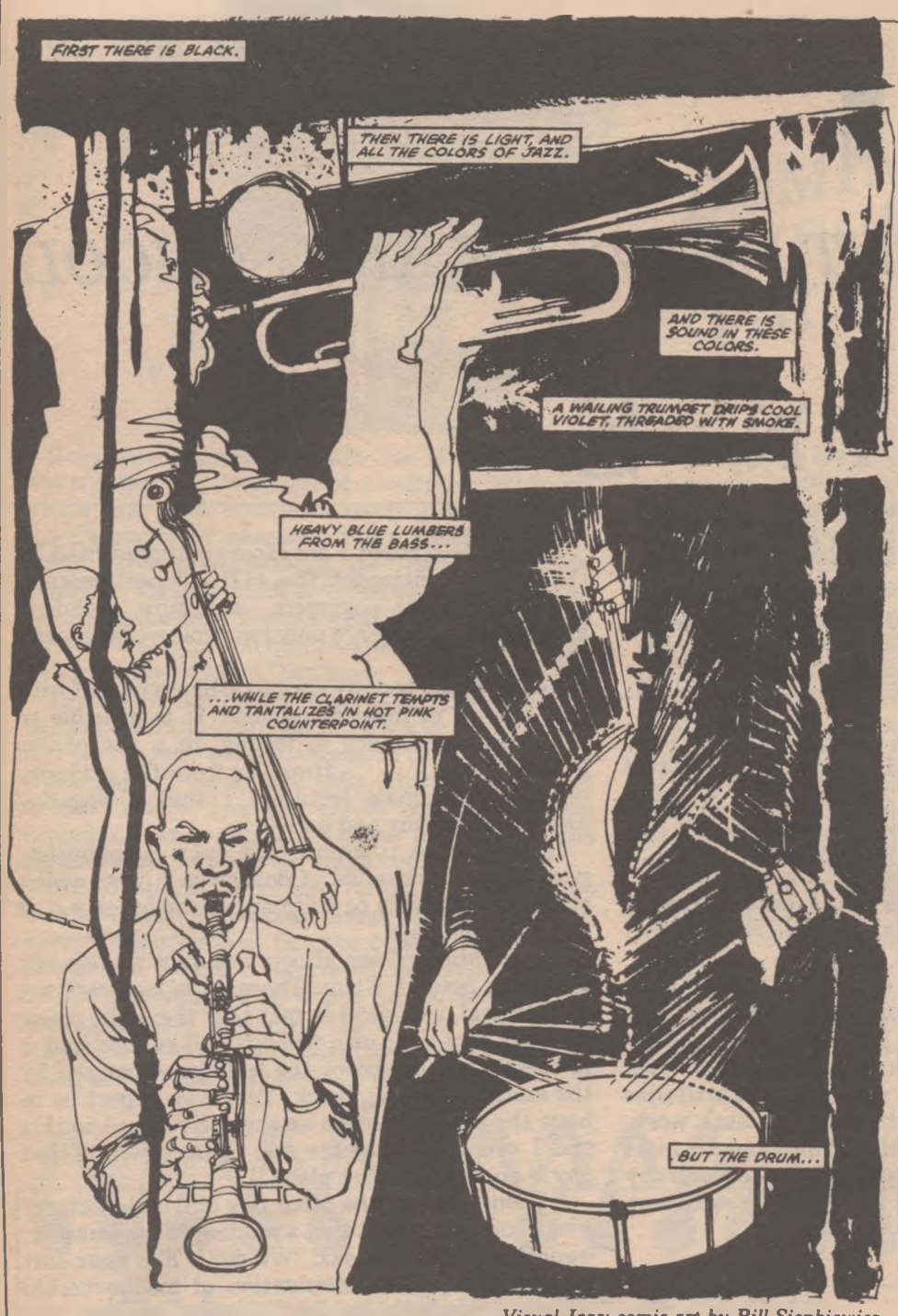
- ▶ learn more from each other than the lecturers
- ▶ survive with the existence of sexism
- ▶ use the facilities available in the school whilst doing the degree
- ▶ be fuckin' careful of how they express themselves so that they pass onto the next stage of Elam!

I cannot understand why such people want to use their power of intimidation, perhaps they feel intimidated and in fact jealous of the ways we students are trying to express ourselves.



NGA MAHI A TE REHIA

THE WORLD OF THE ARTS



Visual Jazz: comic art by Bill Sienkiewicz

INTO COMICS?

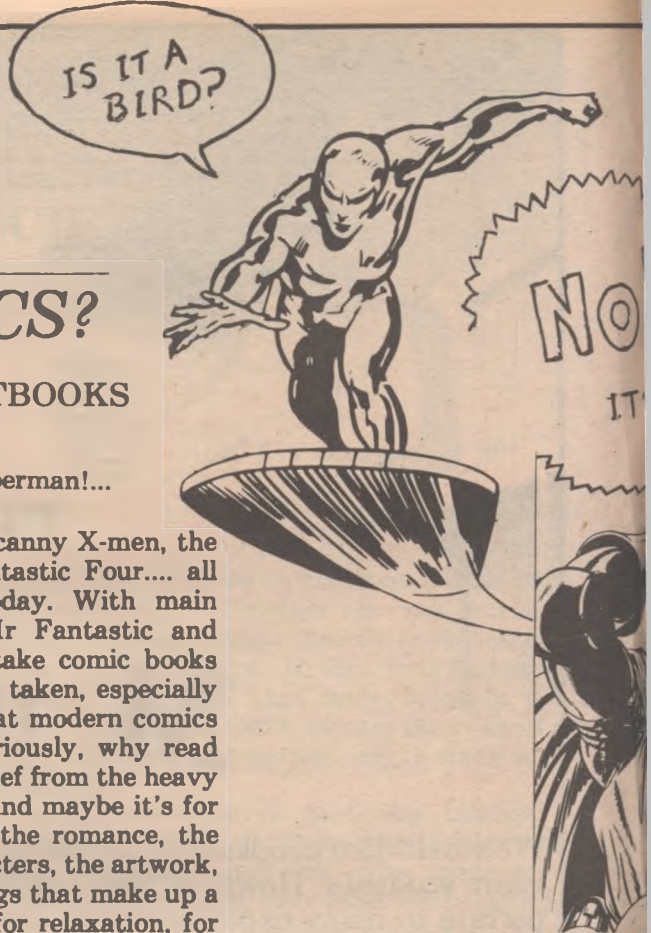
A CHANGE FROM TEXTBOOKS

It's a bird! It's a plane! It's Superman!... You've got to be kidding, folks!

The New Teen Titans, the Uncanny X-men, the Legion of Superheroes, the Fantastic Four.... all titles of popular comics of today. With main characters called Superman, Mr Fantastic and Wonder Woman it is hard to take comic books seriously, but seriously they are taken, especially by the group of avid readers that modern comics has. Why take comic books seriously, why read comics at all? Maybe it's just relief from the heavy drudgery of varsity textbooks, and maybe it's for the excitement, the adventure, the romance, the heroines, the mystery, the characters, the artwork, all the one hundred and one things that make up a good comic. Comics are meant for relaxation, for enjoyment and I for one am a person who takes her enjoyment seriously.

There are some who think that your average comic book is produced by a machine, by some form of gigantic printing press but nothing is farther from the truth. Comics are written, drawn and created by a team of people, each of whom adds their own touch to the work. Hence there is a writer who scripts the story, a penciller who does the initial artwork and design, an inker who draws in the black lines over the pencils, a colourist, a letterer, an editor and many other production staff.

Within the comic world, just as in any other artistic arena, there are always stars. Some artists and writers can maintain a popularity for their entire career, hence an artist/writer/creator like Will Eisner, who first wrote and drew the immortal Spirit back in the 1940s, maintains today a large following for both the reprints of his Spirit work and his latest outpourings. Other younger creators have come to popularity and only time will tell if this will be sustained. Stars of the 1980s have included artists such as George Perez, Keith Giffen and Frank Miller while popular writers have been Marv Wolfman, Chris Claremont and John Byrne, amongst others. Naturally any list will be incomplete and comic fans have been known to be very parochial about their favourite creator.



A potted history of comic books in the 1930s with the original fan in 1938 the introduction of Superman. This heralded what Golden Age, a period when comic sales and in creativity, this by the original superheroes of modern created, including both the Batman and Wonder Woman. Into the 1950s - comic with most of America from that which included a Congressional influence of comic books on juvenile. Surviving this, the industry in the 1960s with the creation of Marvel great Stan Lee and Jack Kirby. In the early 1980s what might have become a revitalisation with new and new production values to Comics today are definitely a they include not just the favourite also political, social and comic audience of not just 8 year old intelligent, grown people as well.

Comics are a part of modern includes New Zealand. How can we remember the debut of Captain America picked up a copy of Strips, or acquaintance with Colonel Void in Bisbay? All these are creations of the Comics scene, and while their success not be particularly related to increasingly we see our own comic and well (though generally under

University Theatre Workshop's August production in the Maidment's Little Theatre will be two Japanese comedies from the Kyogen tradition.

This tradition, dating back to medieval times, is still currently performed in Japan - the tradition having been passed down through generations of performers who are trained from childhood in their art.

The plays have been translated and co-directed by Helen Waki, who has had the opportunity of studying performance skills at the tradition's schools in Japan.

The plays provide comic interludes in Noh theatre, in much the same way as Greek satires. In content they are simple, realistic portrayals of topics such as master/servant relationships or domestic troubles.

This production aims to present as accurate a portrayal of the style as possible, with English text and local actors. Costumes will be elaborate and actors' movements will conform with the style of authentic productions.

The first play, 'Covered in Ink', concerns a landowner's farewell to his mistress and the complications which arise when the servant (observing the mistress 'faking' her tears with water) exchanges the water with ink.

The second play, 'Committing Harakiri with a Scythe', follows the progress (or lack of it) of the protagonist who is so driven by his domestic unhappiness that he decides the only honourable recourse is death by his own hand. The only trouble is, he's rather too fond of this life!

Both plays feature the same cast - Gil Harris, Rob McLaren and Jessica Wilcos and are co-directed by Rowena Yalland.

The season at the Little Theatre opens at 1pm today, Tuesday 31st July, continues Wednesday to Friday (August 1st to the 3rd) with 1pm and 6pm sessions and ends Saturday with a 6pm performance only. Door sales \$2.50 with Student I.D., \$4 to the public - Group Bookings or information, Ph 686-513.

KYOGEN

UNIVERSITY THEATRE WORKSHOP



Traditional Kyogen costumes - Taro-Kaja (the servant) at left and the master's. From the play 'Shibiri' (Pins and Needles)

THE SILVER TASSIE

DIPLOMA IN DRAMA

A new theatre will open next month at Auckland university. The first production at The Drama Studio will be Sean O'Casey's 'The Silver Tassie'.

This play is set during World War One at home in Ireland and on the front lines of the battlefield in Europe.

The playwright draws on his impoverished childhood in Dublin, exposing the harsh reality of working class Ireland. O'Casey has adopted the Expressionist's style to explore the universal themes of religion, war and sacrifice. The controversy arising from the play resulted in his self-imposed exile to England.

The play is produced by the Diploma in Drama. 'The Drama Studio' can be found on Level Three of the new Arts and Commerce Building, 14a Symonds St.

The season opens on August 2, and runs Wednesday to Friday at 1pm and Wednesday to Sunday at 6pm August 2nd to 12th Aug. Bookings Ph 737-999 Ext 7344. A/H 866-138.



Richard Finn, Milton Andrews and Judith Bishop in Sean O'Casey's '1st World War Europe'.

A PLANE!



would start off strips and then man, the first known as the were tops both g when most of m legend were an and Wonder suffered along acade's paranoia mmittee into the ile delinquency. i revived in the l Comics by the n the 1970s and ne a lull instead inputs of talent xperiment with. ature art form, superheroes but tire reaching an but also highly



ulture and that ny of you can unshine, or have have a passing d his pet axolotl the New Zealand ject matter may fe in Ponsonby, ic creators alive ound).

There is one aspect of comic books that even the cynical begin to take notice of eventually and that is their value. Yes folks comics is big business. Action Comics 1 retails at over \$10,000 not bad for the first Superman story. Naturally you're not going to find that in your neighbourhood book store but the bargains are out there. The collector today with a judicious choice and some luck can expect their collection to become valuable with time. Personally my best bargain was a 60c comic in a dairy that had an actual value of \$20, finding that really made my day.

Having got you hooked on the idea of reading comic books the last question to answer is where to find the little gems. Gone are the days when the despondent comic fan trudged round numerous second-hand bookstores looking for that odd item to fill in their collection, comics have come of age. Auckland has its own specialist shop, Mark 1 Comics, situated in the Custom House, and a mail-order service, VMS (Visual Media Service, P.O. Box 27-077, Wellington) also operates, both give a good coverage of comics produced and both distribute various books that are otherwise unavailable in New Zealand.

A final note would be that I read comics for the enjoyment I personally get out of them, to hell with intellectual snobbery. With an open mind and a willingness to read before you judge, I'm sure that lots more people may also enjoy the universe of comics. Maybe Superman's not your cup of tea but remember next time someone offers you a copy of Batman, take a second look.

Anna Marsick

Vegetation: ►

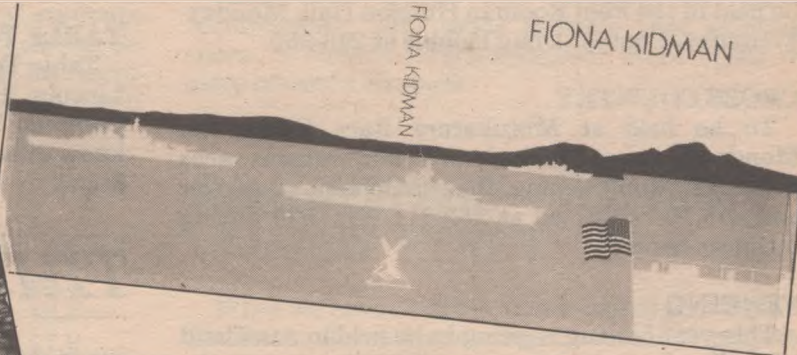
Live at Shadows, Friday
- Helen Fuller, Parbhu Makan, John
Schmidt, Richard Von Sturmer and
Charlotte Wrightson

POETRY READING

ELIZABETH SMITHER AND FIONA KIDMAN

Two New Zealand Poets, Elizabeth Smither and Fiona Kidman will be giving a reading of their poetry on Wednesday 1 August at 1pm in ARTS 1/lecture theatre 215 (ie 2nd level in the building which houses the English department).

Fiona Kidman has had a number of books of poetry published although she is probably better known to her audiences as a novelist and short story writer. Her latest book, *Paddy's Puzzle* is currently being considered for the book awards.



Elizabeth Smither is this year's university writer-in-residence at Auckland. She has had six books of poetry published and her first novel *First Blood* came out last year.

LIVE VEGETATION

SHADOWS ON FRIDAY

BURN

Burn, Burn the burn
Bite, Bite the bite
Gouge out the wound

Dig a hole
Bury the spade
Kill the dead
Bury their graves

If you find intelligence, humour and emotion lacking in the latest music, catch VEGETATION at Shadows on Friday night. Rot and roll, decompose, return to the Great Mother and spend another lifetime in lush green pastures, all in the space of one evening.



1984 BNZ WINTER TOURNAMENT NEWS

LINCOLN COLLEGE 20-23 AUGUST 1984

Well it's just three weeks till Winter Tournament proper kicks off. In those three weeks we will have to do quite a bit of work to make it successful. A final figure of 22 individual events has been decided upon. These are:

COUNCIL SPORTS

BADMINTON

Badminton is being held in Gillespie Hall from Monday, August 20 to Thursday, August 24. Mens, womens and mixed teams are competing. Controller for badminton is Linda Geerkings, ph 238-137.

BASKETBALL (WOMEN)

Womens basketball at this stage is being held at Lincoln High School gymnasium in the mornings of Monday-Thursday and in the Lincoln College Rec. Centre main hall in the afternoons. The man in charge is Neville Moore, ph 252-415.

BASKETBALL (MENS)

Mens basketball is being held at Lincoln College Rec. Centre main hall all day from Monday-Thursday. This could prove to be an excellent spectator sport for the tournament. Maurice Corkery is the controller, ph 797-657.

BILLIARDS

One of the *social* sports at any winter tournament, billiards should be a lot of fun. It is to be held in the Pool Room in Hudson Hall, Monday-Thursday. Contact Doug Dobbie at 243-360.

CROSS COUNTRY

To be held at Motukarara Race Course on Monday, August 20. Both mens and womens races to be held. Ron Fleming, the custodian is controller and can be contacted at 252-811 Ext. 570 during business hours.

FENCING

This year fencing is going to be held in Auckland immediately prior to the NZU fencing team overseas tour. If you have any queries contact Ewan Swale 252-887 Rm 185.

HOCKEY (WOMENS)

Is going to be held on campus at Lincoln. Janet Sperry is the lady to contact, ph 292-884.

HOCKEY (MENS)

Mens hockey, due to ground shortage in the country region is going to be held at Ilam fields at the University of Canterbury. Martin O'Connor is mens hockey controller, ph 243-360.

KARATE

Karate will be held at Lincoln High School Gymnasium on Monday, August 20. Usually one of the smaller sports at tournament but hotly contested. Phone Geordie Thompson at 888-351.

NETBALL

Netball's venue is the Lincoln College netball courts by the Rec. Centre. This year we are pleased to have as our guests at winter tournament the Monash University (Melbourne) netball team. Aggie Essenberg is the netball controller, ph 252-415.

RUGBY LEAGUE

Is being played on campus. Controller is Paul Rosanoski, a Canterbury University student who ran league at winter tournament at Canterbury in 1982. Phone 797-985.

SMALLBORE SHOOTING

Smallbore is being held at Bangor Street range in Christchurch Monday-Thursday with a shoot

between NZU team and an invitation side on Thursday. Controller is Richard Davie 252-401 Rm 18.

SOCCER (WOMENS)

A venue has not yet been decided upon but will be in town somewhere. Controller is Lynne Smith, ph 252-238.

SOCCER (MENS)

Men's soccer is being held on campus with a game between NZU and an invitation team being held at English Park on Thursday evening. Controller is Dave Billand, ph 252-238.

SKIING

Skiing is being held at the Craigieburn Valley between the 12th and 18th of August. Accommodation is on the field and it looks like a good social time will be had up there as well as some pretty serious competition. Skiing controller is Mark Reid at 295-728.

SQUASH

Squash is being played at the Rec. Centre Squash courts Monday-Thursday. Both men's and women's competitions are to be held. Squash controller is Graeme Davidson, ph 295-834.

TABLE TENNIS

Table Tennis, at this stage, will be held between Lincoln High School gymnasium and Lincoln Campus. We have no controller as yet so if you know of someone who might be keen, please let me know.

TRIAL SPORTS

CYCLING

A road race only is planned from some starting point out in the country and finishing back at the campus. We have no controller for cycling either, so if you know of any keen cyclist, just send them to me.

DEBATING

Debating is being held in conjunction with Joynt Scroll at Canterbury University. Debating is going to be run in the Totara Room on Monday, August 20 and Tuesday, August 21. The debating person is Mary-Anne Aynsley, ph 252-887, Room 36.

RUGBY UNION (MEN)

This is the first year that rugby union is being held at winter tournament. It will be a chance to see who really is the best university side in the country (if you don't know already). It's being held on campus Monday-Wednesday with finals and invitation NZ Unversity match being held on Thursday afternoon on rugby 1. The controller is Jack Hollick, ph 252-811 Ext. 796 during business hours.

INVITATION SPORTS

DARTS

Darts is being held at the Canterbury Darts Association Hall in Balfour Street, just down from Lion Breweries. It is purely social and the hall even comes equipped with a bar. For those of you who

need an excuse to stay and play sport at tournament, play darts. Paul Garvin and Willie Allan are in charge. Paul can be reached at 252-811 Ext 405 and Willie will be organising the team. He can be got via the student mailboard.

RUGBY UNION (WOMEN)

Rugby Union for women is being played on campus and Ashley Smith is the controller and he can be reached at 498-548.

TOURNAMENT OFFICE

The Winter Tournament Office is on the opposite side of the rose garden of the Lincoln Students Association. Please call in anytime.

If you like, phone us at 252-456, 252-466 or Ext 766 or 564.

A notice has been set up in the Lincoln Students Union just opposite the Students Assn office. This will be used to keep people informed as to what is happening on the tournament scene.

If you're at all interested in helping with the tournament organisation, just get in contact with either the AUSA Sports Officer or the Lincoln Students Assn.

AUCKLAND CONTACT NOS.

BNZ WINTER SPORTS TOURNAMENT

The following people are the respective organisers for the various spoits at Winter Tournament. Contact these people if you wish to complete at Lincoln in the Tourney:-

TOURNAMENT SPORTS		
Badminton	Ulrich Roxburgh, 13 Bongard Rd, Kohimarama, 5	582-641
Basketball- mens	Neil Shepherd 69 Mountain Rd, Mangere Bridge	Ph 660-724
- womens	Karen Meiklejohn 776 Remuera Rd, Remuera, 5.	Ph 540-602
Billiards	Richard Foster 43 Hakaroa St, Grey Lynn	Ph 767-981
Hockey - mens	Paul Watson 3 Turakina St, Grey Lynn.	Ph 765-739
- womens	Raewyn Bennett 2/50 Penbroke Crescent	Ph 556-614
Netball	Lindsay Thorp 6 Cracroft St, Parnell	Ph 771-383
Shooting (small bore)	Jonathon Tse 130 Surrey Crescent, Grey Lynn	Ph 763-358
Skiing	Duncan Such 126 Greenlane Rd, Greenlane	Ph 541-766
Squash	Andrew McHugh 88 Calgary St, Sandringham	Ph 699-055
Table Tennis	Robert Woolf 7/118 Remuera Rd, Remuera	Ph 500-730

LATE ADDITIONS

Rugby League
John Perese, 12/41 Park Rd, Grafton, Ph 30-402
Soccer — Womens
Melanie Bennett, 55 Seaview Ave Northcote, Ph 489-748
Soccer — Mens
Patrick Fontein, Ph 788-396
Karate (Rembuden)
Simon Beaumont, 249A Jervois Rd, Herne Bay
- Ph 765-102

TRIAL SPORTS		
Cycling	Angela Drake	Ph 606-259
Debating	21 St Andrews Rd, Epsom 3.	Ph 547-586
	Claire Ryan	
	533 Remuera Rd, Remuera, 5	

For the following sports could you contact the AUSA Sports Officer if you wish to compete or organise a team to go to Lincoln:
Cross Country, Rugby womens.

The Sports Officer's office is situated in the Rec Centre and he is there most lunchtimes, or leave anote and he will contact you.

THE STUDENT UNION: FUTURE DEVELOPMENTS

Preliminary data is now available from the Student Union Preferences Survey. This brief article looks at some of the key results.

ABOUT THE SURVEY

The Student Union Preferences Survey was commissioned by the combined AUSA/University Student Union Development review committee, to assist planning over the next 10 years.

Questionnaires were sent out to a randomly selected sample of 730 students. 487 replies received (67% response rate); 48% respondents were female, while about 23% of all respondents were part time students.

Students were asked questions about their use of the existing student union complex, and what they felt should be included in its next stage. To give as wide a choice as possible, options for future development were grouped under 7 headings, each dealing with a particular function of the Union complex. Students were then asked to rank each function according to which functions they felt needed future development.

1. CATERING

Facility required	%
Coffee, Snack bars	33.3
Takeaway outlets	19.5
Restaurant	10.7
Other - Alternative foods	11.9
-All day meals	1.3
-other	6.3
-none	8.8
-no opinion	8.2
	100.0

Clearly, the favourite choice is more coffee/snack bars, though takeaway outlets also rank high. Interesting to note the significant numbers (11.9%) who commented on the need for more outlets catering for alternative foods — health food, vegetarian, Mexican and the like. Perhaps there is room for something akin to the 'Plaza' foodmarket.



Preferred location of any new catering facilities are in line with existing plans: 38.4% would like to see new outlets remain at the Student Union, while 17% of all respondents opted for the Human Science/Arts Commerce area as needing catering facilities (a takeaway outlet with some seating is already planned for H.S.B., to be in operation by Term 1 1985). Of the rest, over 26% of all respondents had no opinion about where new catering facilities should be placed.

2. RECREATION

The possibility of a swimming pool on campus attracted considerable support from students. 56.3% supported this option as against only 7.9%

for the next highest recreation priority (a fitness track).

Students indicated that they would use the pool often (about 60% would use it at least once a week), mostly for casual, non-competitive activities. This fits in with the type of pool already suggested to the committee: a 25 metre, covered tepid pool with adjacent diving pool. Of course, the \$ question could affect this proposal — despite its popularity with students. Current estimated cost is over \$2 million, and this can be expected to rise over the next few years.

3. SOCIAL LIFE & ENTERTAINMENT

Facility Required	%
Concerts, live performances	29.6
Movie theatre	26.0
Licensed student club	19.3
Large dances, socials	11.1
Other	1.4
None	12.6
	100.0

A fairly split decision over what type of social life facilities are required on campus. The demand for concerts etc and large dances (combined total 40.7%) implies the need for a better venue than the cafeteria, while a movie theatre could possibly be combined with existing theatre facilities or take advantage of new technology to be fitted into a smaller space.

Note also the large (12.6%) number of students who do not want any new social life facilities on campus. This perhaps indicates that for some students, campus life is not the focus of their own social life.

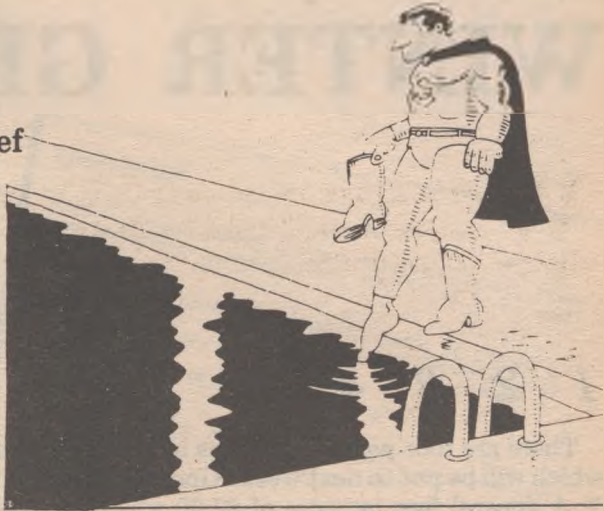
4. RELAXATION

Facilities Required	%
Small lounge areas	29.8
Music listening room	18.1
Quiet space	17.0
Large lounge areas	10.3
All others	5.1
None	4.6
No opinion	15.1
	100.0

The lack of small, quiet common rooms in the existing student union complex shows up in students' responses here.

5. ARTS FACILITIES

Facilities Required	%
Film/Video workshop	28.5
Painting/Sculpture/Craft	13.2
Music Workshop	12.4
Theatre rehearsal room	6.3
Others	3.1
None	6.1
No opinion	30.4
	100.0



Clearly, new film and video technology is making this particular artistic medium more accessible to a greater number of students. The more 'traditional' arts, however, remain popular.

Whether the next stage of Student Union can include some new arts facilities will depend on whether student support is strong enough to afford them as well as higher priorities such as catering and recreation.

6. COMMERCIAL SERVICES

Two proposed new commercial outlets gained considerable support from students. A chemist shop (first choice for 44.8% of students) and a Dairy/Mini-Market (26.3%) may join the existing commercial services, such as the bookshop, travel bureau, sports shop, banks and Post Office.

7. STUDENT CLUBS

Final data is not yet available for clubs requirements, but trends indicate that existing space is already oversubscribed. More clubs = more pressure on space.

PRIORITIES - WHICH COMES FIRST?

What we have above is a grab-bag of possibilities for future development, but to actually complete all of these within the next 10 years is not feasible without massive injections of funds into the student union building program.

To assist planning the Survey asked students to rank each function according to what was most needed (1) to least needed (7). The result is a list of priorities which we hope can be combined with the choices made in each area to form a building programme — providing of course the money is available.

The table below sums up overall priorities.

The two measures used here (mean and percentage of students ranking each function in the top 3) give recreation and catering a clear lead over relaxation, followed by social life etc and commercial services. Arts follows with student clubs a distant last.

Further results from the Student Union Preferences Survey will be available over the next two weeks.

PRIORITIES FOR FUTURE DEVELOPMENT: BY FUNCTION							
	Catering	Recreation	Relaxation	Soc, Life, Entertainment	Arts	Student Clubs	Commercial Services
1 HIGHEST	(1) 36.82	(2) 30.48	(3) 14.04	(5) 9.76	(4) 10.76	(7) 3.79	(6) 8.99
2	18.29	22.42	25.06	11.38	9.59	7.26	14.02
3	17.34	19.40	19.80	15.99	13.66	9.15	14.55
4 MIDDLE	13.54	11.08	15.79	20.33	13.95	11.36	14.02
5	6.18	7.81	12.03	19.51	13.66	22.08	14.55
6	4.04	4.28	8.02	14.36	18.60	23.66	12.43
7 LOWEST	3.56	4.53	5.26	8.67	19.77	22.71	21.16
MEAN	(1) 2.62	(2) 2.74	(3) 3.32	(4) 4.06	(6) 4.45	(7) 5.03	(8) 4.35
%M TOP 3	(1) 72.58	(2) 72.3	(3) 58.9	(5) 37.1	(6) 34.0	(7) 20.2	(4) 37.6
The numbers in brackets indicate the priority rank according to that scale.							

Next Tuesday, 7th August (and Thursday 9th if necessary) the Winter General Meeting of the Students' Association will debate rises in the Association fee and the Building levy. In this article, Kia Ora examines the reasons for the proposed rises.

WINTER GENERAL MEETING

1 2 3 4

- There are four parts to the fees increase motions which will be put to next weeks General Meeting:
- A general fees increase of \$7.00 which includes \$2.00 specifically tied to grants for clubs and societies.
 - A levy of \$2.50 to pay for the implementation of the Association's Housing Policy.
 - Approval for Campus Radio to raise a loan of \$100,000 to re-equip the station for FM and an annual levy of \$3.00 to pay for the loan and to subsidise the station's running costs.
 - An increase of \$12 in the building levy.
- This means that students will be asked to approve increases totalling \$24.50 for 1985. The major question is, why are these rises necessary?

THE GENERAL FEE INCREASE

1

There are two elements in the proposed \$7.00 increase in the general fee: \$5.00 to maintain current services and \$2.00 for club grants.

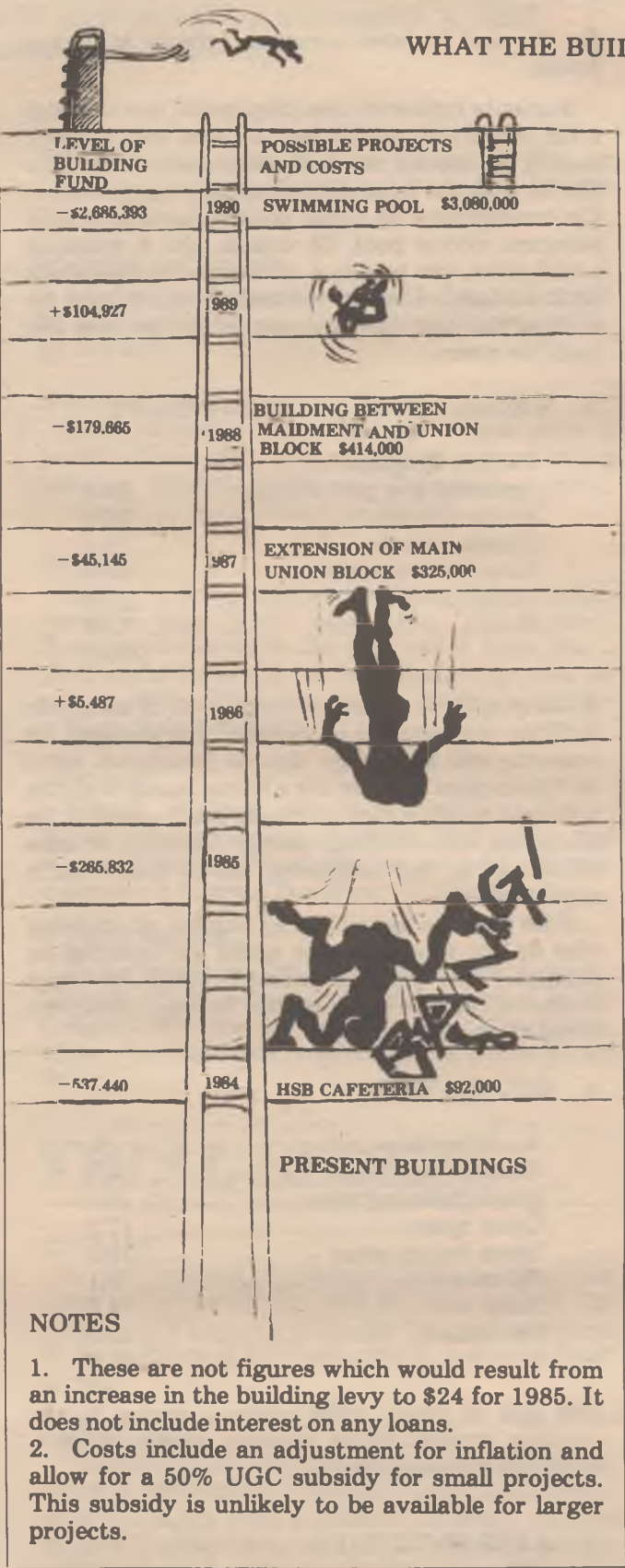
Of the many reasons for this proposal the major one is that while costs have been steadily increasing over the last few years, the Association has had to face the problem of a static income. Executive members point out that the current fee of \$40 is the lowest in the country and that the choice for students in this area is a case of either approving the increase or accepting a drop in services.

The services which are most likely to be affected by a rejection of this increase are:-

- the unprofitable parts of the catering operation such as the budget meal or the vegetarian/health food selection could be dropped and prices for other food items would have to rise.
- students and clubs currently benefiting from a number of subsidised services would have to pay more. These services include photocopying, room hireage, resource materials for advertising, cleaning and security for functions etc.
- the prices for on-campus entertainment such as Shadows, the lunchtime Maidment movies, orientation and capping events would have to be raised to make them more profitable.

It appears that there is no room for manoeuvre in this proposal. The Executive points to the number of requests for budgetary allocations for 1985 which have been rejected as evidence that the proposed rise is conservative. Meeting all these requests would have entailed an increase in the general fee of more than \$11.00.

The \$2 rise in the allocation for club grants is basically a response to the rising tide of demands on the committees which allocate these funds. In recent years these committees have had to reject a growing proportion of grant applications. Raising the amount of money available to clubs is seen as the only viable way of helping to cope with the increasing costs they are facing.



2 THE HOUSING LEVY

The policy-making body of the Association, the Student Representative Council, has adopted a policy aimed at increasing the number of Association-owned houses so that more low-rental accommodation can be made available for students.

AUSA currently owns properties which house up to 69 students, and the intention is to use the proposed levy of \$2.50 to increase the number of such houses. The Association is also applying to Government for low-interest finance so that it can speed this process up.

The students who promoted this policy pointed to the deteriorating situation in the Auckland housing market which has led to real hardship for students faced with the problem of high rents. Through entering the property market it is hoped that the Association will, in the long-term, be able to protect a growing number of students from the vagaries of rent increases.

3 THE BUILDING LEVY

THE NEED FOR ADDITIONAL SPACE

The Student Union Complex was designed for 7,500 students. We now have 12,400 members and by 1990 it is estimated that 15,000 students will be crammed into the facilities. The problems that already exist: limited indoor room on wet days, lack of quiet spaces, queues in the cafe and coffee bar, shortage of meeting rooms, will simply get worse.

A recent survey of students has shown a need for increased facilities, particularly for catering, recreation and meeting rooms. (An initial summary of the survey results is on page 13). The final results which are due out in three weeks will form the basis of future building programme discussions. From there a proposal will be taken to next year's Autumn General Meeting for approval. Any proposals are of course dependent on an increase in the building levy.

WHY A BUILDING LEVY?

The building levy was introduced in 1961 at the 'exorbitant sum' of 3 pounds (\$6). The facilities in those days were designed for 650 students but were handling almost 5000. The chronic overcrowding and the expected increase in student numbers led to the present complex being conceived.

It was the foresight of students in the 1960's which saw the introduction of the building levy. They, and the students who followed during the 60's and 70's helped pay for today's buildings.

Just as those students paid for facilities for the future, the present generation of students is being asked to pay an increased levy so that the available space can expand to cope with the rising numbers at the University.

IS AN INCREASE NECESSARY?

A number of factors prevent the Association from instigating the required building programme without an increase in the levy. These are:

- The building levy has stood at \$12 since 1972. If it had been adjusted with inflation it would now be \$41.
- Since 1972, the building fund has been used for the Maidment Arts Centre and the Recreation Centre, at a total cost of \$2.8 million.
- with the Human Sciences Cafeteria (to be built this summer) the building fund is \$540,000 in debt.
- The University is unlikely to allow the fund to go further into debt unless the levy is increased to make payments for new buildings feasible.
- Unless the University is satisfied that the building levy is set at a realistic figure, it is unlikely that land will be allocated for building more facilities such as a swimming pool.

THE PROPOSED INCREASE

The proposal being put forward by the Executive is to raise the building levy to \$24 for 1985. This would mean that:

- The existing debt (including HSB cafeteria) would be paid off in 1986.
- First extensions to the present buildings could be completed in 1987/88.
- Larger projects such as a swimming pool or union hall could be undertaken by 1990.

The proposal for increasing the levy includes a commitment to take the building proposals to next year's Autumn General Meeting. Any future increases in the levy will depend on the projects which are approved by a General Meeting.



16 July 1984

REPORT ON THE SUITABILITY OF EXISTING RADIO B EQUIPMENT FOR FM BROADCAST USAGE

To begin, a brief introduction:

I am at present contracted as Production Manager at 89FM and have been responsible for all production/recording work for Stereo FM Ltd for the last three years. I previously worked out of Harlequin Studios for three years as a recording engineer / producer, and for some four years before that as production engineer for Radio Hauraki.

In my dim Wellington past, I was a Communications Radio Technician for the Post Office and was also contracted during that time as Standby Maintenance Engineer for Radio Windy. Also in the last 18 months, Harlequin owner Doug Rogers and myself designed and supervised the construction of all studios at 89FM, and the main Audio Suite at Vid-Com

Before getting down to specific equipment requirements, let me note that I am very aware of the limited funds available for the proposed AM to FM changeover. I would like to make it understood however, that I see a clear technical responsibility on behalf of all licenced users (whether public or private) of all the airwaves. The public (via their agent in these matters, the Broadcasting Tribunal) will be entrusting their airwaves to Radio B to use in a responsible manner both technically and editorially. Radio B is, at present, certainly not equipped technically to undertake that responsibility.

I also feel that those at the helm at Student Radio have an inherent responsibility to provide equipment of sufficient capability to provide a true learning experience, equipment that will increase the level of expertise of the many people who will pass through the facility in the years to come.

My apologies for being long-winded in my opinions, and now down to specifics.

STUDIO ONE (THE ON-AIR STUDIO)

- A new stereo on-air mixer (obviously, component quality and reliability are serious considerations in this and any other area where continuous on-air operation is at risk.)
- New turntables, tonearms and cartridges (some use could be made of existing turntables in production.)
- New Monitor Speakers (again the old ones can be used elsewhere.)
- Stereo Cartridge Playback Machines (at least three)

STUDIO TWO (PRODUCTION)

- An eight-track tape recorder with associated, on board dbx noise reduction (the existing 4-track recorder is barely adequate for AM Production, and almost all program information that was previously recorded in mono on one of the four tracks will now require two tracks to retain stereo)
- A production mixing desk (I suggest something in the region of 16 input / 4 (or 8) outputs. Soundcraft perhaps?)
- A second 2 track stereo mastering recorder (the existing Revox is adequate, but many operations require two 2 track machines, and of course a back-up machine is always desirable.
- Monitor Speakers (those currently in Studio One will be adequate)
- Stereo Cartridge Recorder.
- A digital delay unit
- A Stereo Reverb of some description.

LINE ROOM

- Post Office wide band landlines and back-up lines will have to be leased.

TRANSMITTER SITE

- FM Transmitter (& stand-by Transmitter Final Stage)
- Transmission Antenna.
- Modulation Monitor System.
- Some form of signal limiting system (to achieve more apparent power at the receiver than the 100 watt (or 500 watt) transmitter can provide un-processed)

CAMPUS RADIO Feasibility Report on going F.M.

MISCELLANEOUS

I can't hope to cover all the small ancillary items that are always required, but some areas to be aware of are:

- New microphones (the existing Shure SM 7's will perform well as on-air mics, but two better quality condensor mics will be necessary in Studio Two.)
- Cabling and connectors
- Woodwork
- Cartridges (for new Stereo record / replay format)
- Headphones
- Equipment Racks

I hope my thoughts will be of some assistance to you, and be assured that 89FM will adhere to its warrant application promise to afford you advice and assistance in welcoming you to the real world of FM Broadcasting.

We wish you the best of luck in this exciting endeavour.

Steve Kennedy
PRODUCTION MANAGER



4 CAMPUS RADIO - FM?

Why does Campus Radio want to become an FM station?

There are lots of reasons. First it is a question of survival. The equipment at Campus Radio is in danger of a complete breakdown at any moment. Most of it is home-made, was intended as a short-term measure and is disintegrating quickly in the heat of the studio. So we are going to have to spend a lot of money or close the station down. The reason for wanting to set up as FM rather than AM is that we will be able to produce a much better broadcast with FM. The whole idea of FM is to use it for community based stations which broadcast music with a wide signal range - a perfect description of Campus Radio. The existing FM stations simply play AM music on FM equipment.

Would it be cheaper to buy the necessary equipment if you remained as an AM station?

No. To re-establish the station, so that it can run for the next 10 years with minimal financial input, we need \$100,000. Of this about \$30,000 is connected with the FM transmitter. If we wanted to stay AM, and buy a transmitter, rather than hire it as we do now, it would cost up to \$50,000. So FM, incredibly, is actually cheaper for us.

What we want to do is to raise a loan for the \$100,000 to be paid back over the next five years out of the annual levy.

Do you think it is reasonable to ask students to pay for Campus Radio?

Yes. Campus Radio is a student station which is aimed at a student audience. It is available for students, clubs and societies to use for getting information about their activities across. It is also there for students who are interested in broadcasting to get some experience in all aspects of running a radio station. We don't think that \$3.00 per year is a lot to pay for your own station, especially one which provides a real alternative from the usual commercial stations.

At the moment you survive on advertising income. Why can't you raise the money you need through more adverts?

There seems to be some sort of idea that Campus Radio could raise endless money through advertising if we played music with wider appeal. This is sheer rubbish. With four full-time, high-powered, high finance stations vying for the average 15-35 year old, what chance would a low-powered, low-budget, part time station have? I think we would lose listeners, not gain them.

You see, our appeal to advertisers lies in the station's uniqueness, not the size of our audience. On top of this, I think that if our music was bland the information we broadcast would have to be less controversial in order to appeal to a middle-of-the-road and less open minded audience. It is also unlikely that the Broadcasting Tribunal would licence us to run yet another 'hit radio' station.

Finally, you should realise that this year we have already tripled the amount of advertising that we carried in 1983, but we have now reached the limit - you can't expect it to get any bigger.

Do you think that future Campus Radio management will be of a good enough standard to justify the expenditure you want to make?

Look at it this way; Campus Radio has been kept going by people who have received little or no reward for endless hours of work. I think that if these sort of people are to be attracted to the station in the future it is essential that we get away from running everything with equipment that is stuck together with chewing gum. The more professional the set-up of Campus Radio, the more likely you are to attract people who will take a professional approach.

I also think that it is fair to pay something to people who work long hours - we are not talking about paying large salaries, just something that makes it a bit more worthwhile.

How do Campus Radio facilities compare with other student stations?

Badly. All the other stations have had substantial grants in recent years and work on budgets that we only dream about. (See table) We are asking for a loan to do the sort of things that other Students' Associations have given their stations.

Take Radio One at Otago. They were given \$75,000 this year and run on a budget of \$6000 a month with nearly \$4000 of that coming from levies. We run on the same sort of budget but we have to raise all that through advertising.

What do you think will happen if you don't get the money you want from the General Meeting?

Well, I think it's a question of need rather than want. If the station doesn't get the money, we'll probably be able to keep the place going to the end of the year by patching up broken equipment. Beyond that, I doubt very much the possibility of the station surviving.

It's really a question of whether students want Campus Radio or not. If they do, then they will have to give us something.

STATION	Broadcast Period	Monthly Budget	Maintenance	Wages per month of broadcast	Equipment Grants to date	Annual Assoc. levies (Running Costs)	% of Monthly budget covered by levies.
CAMPUS RADIO	10 months	\$5,900	\$5,900	\$1,120	\$3,000	0	0
RADIO ACTIVE (Wgtn)	6 months	\$12,233	\$3,000	\$2,724	Several	\$3.87 per stud. \$25,541 total	35%
RADIO U (Chch)	5 months	\$7,000	0	\$2,000	\$42,000 (1981)	\$3,000	8.6%
RADIO ONE (Dunedin)	3 months	\$6,100	\$2,000	\$2,605	\$75,000 (1984)	\$11,000	60%
RADIO MASSEY	Move to FM in 1984 entirely funded by Students' Association. Honoraria higher than Auckland. Actual figures not available.						
RADIO CONTACT (Hamilton)	No available information.						

A comparison of the financial situation of the Student Radio Stations.

NGA TUHI MAI

LETTERS

NONGI UNDERSTANDI

Dear Editors,

On opening last week's KIA ORA I thought for just one second that MacPhail and Gadsby might have come along and whipped the editorship from right under Rangi and Neil's nose.

Then I realized it was Maori language week but what I hadn't realized was just how much of it would be in Maori. Had I of known the lovely little lift out section was to be almost completely written in the native tongue I might have had a chance to rush in for one of those one week crash courses in understanding Maori.

I did understand the picture of the lizard and loved the little pictures of the peninsula but failed to come to grips with ninety nine percent of the main thrust of the story.

I am afraid that I was under the impression that Maori language week was aimed at educating a wider group, perhaps even those who haven't quite grasped the grammatical structure of Kia Ora.

I just hope that we can have more of this specialized writing on specialized subjects in specialized forms. May I suggest that we have an Italian or Chinese awareness week or, aimed at a wider population, Sparrow awareness week as I am sure the university at large would gain just as much from two pages of sparrow footprints as they have done with these pages.

Yours bewildered,
nongi understandi,
V.L. Walker

THE MAORI LANGUAGE

Kia Ora,

For the benefit of non-speakers of te reo Maori, I thought I'd send in a translation of what I wrote in last week's issue for Maori Language Week.

"If my language dies, I die.
If my language lives, I live"

I agree wholeheartedly with these words by Merimeri Penfold. They express the very reason my wife and I enrolled our children in a Kohanga Reo, so that this part of Sir Apirana Ngata's saying should be fulfilled.

Grow and nurture....

Your heart in the precious things of your Maori ancestors
As plumes to adorn your head.

Our oldest child is four, nearly ready to go to school. Her younger sister is almost three. Their preferred language, the language which they find easiest to use is Maori. They speak only Maori to each other, at home, on the streets of Auckland and in the shops. No matter where they are, they're not shy to speak Maori.

Sometimes when people hear these two, they turn and their eyes nearly pop out of their heads! Another day a person turned when he heard these children and so failed to see a telegraph pole - whoops!! Other people, on passing by hear the children, come back again to hear properly - not believing their ears are hearing Maori.

Now it is children like these who are teaching us not to be ashamed of speaking Maori, to persevere in using our Maori tongue! Personally I would like to praise the nannies, the supervisors, the parents and children in all Kohanga Reo throughout Aotearoa, for their efforts in reviving our language but most of all for reviving Maori spirit, so that Maori hearts beat resoundingly for those things Maori,

"As a plume for the head".

Tom Roa
Tamaki-makau-rau

\$40 + \$12 = \$52

Dear Rangi and Neil,

Kia Ora,

In reply to the letter from 'Involved' in the last edition I feel I must clarify what was said in the presidential column. The sum of \$52 Association fee is the building levy and studass fee in one. Each is separately set in the constitution. \$40 is the studass fee, \$12 is the building levy.

Secondly, the 5c photocopier is, and has been all year, in the Studass Reception area. I suggest to 'Involved' that she/he is not as much a participant as the pseudonym suggests.

Yours in boredom (don't you hate uninteresting letters?)

Jonathon (not really).

FROM 'BORSCHT' TO 'ORSCHT'

To Maria Kazmierow and other Beetroot-Borscht fans,

I have checked several sources for Borscht recipes and I've discovered that I'm not the only one who's taken liberty with that specialised title. A few other recipes omitted or made optional the use of beets. However I apologize ... so now I (and several others by the look of it) will have to find a new name for our recipe ... perhaps 'Orscht'.

Tracy.

DRAWING THE LINE

Dear Kia Ora,

I'm a bit confused. One of the candidates for National Affairs talks of nuclear warships and better bursaries. If he is only going to work on these, what is the International Affairs Officer and Education Vice President meant to do?

Who does he think is going to make sure students are heard on issues like unemployment, civil liberties and the rights of the many hassled and harrassed people in NZ?

John Mitchel

THE END IS NIGH

Dear Jon Lusk

Are you for real? Have you a conscience?

Your perverted suggestions indicate immense folly, and abandonment of even the slightest inklings of anything humane.

Firstly, your statement claiming heterosexuality as compared to homosexuality - the real 'disease', stems from an aberration which indeed parallels the confused state of your hormones.

Your absurd inference to need of dramatic changes in child upbringing, commercial advertising, etc etc in order to promote homosexuality defies the logic of survival. By heeding your demands, would we not be opening the floodgates of disease (AIDS, HEPATITUS) woe and degeneracy.

Would we not be ignoring the horrifying and conclusive results from this tried and failed path in history (Sodom, Gomorah, Rome, etc).

You might shout 'narrow mindedness', but let's examine your own case, and indeed that of the greater proportion of homosexuals.

Since it is commonly understood that homosexuals are generally sensitive, emotional, and flexible people, being thus pliable, they have at some point during their early years (and in certain cases, later) been perversely influenced by other degenerates who have been earlier victims of what is a 'chain-reactionary' process.

Since you are then a victim of this 'cause and effect' process which has its origin in some humane brute, devoid of any noble sense, you are not fully responsible for your condition.

However, although I perceive a disguised plea for help in your letter, you are acting quite negatively in response to your own personal problem, by attempting to drag society down to your weakened condition.

Perversion is perversion and your ultimate course must be an 'all out' attempt for self recovery.

Others have succeeded. Perhaps the best way of achieving this goal, might be to gain the intimate friendship of some tender, loving and understanding female, who will undoubtedly strive to ease your burden and restore to you - MANHOOD.

Yours faithfully,
Morally concerned

DR ZHIVAGO

Dear Sir/Madam

Re: the article "Film Festival Follow-Up".

I would like to point out:

- Dr Zhivago was wonderful.
- That Mark Allen and the staff were not the only ones responsible for the continuation of this movie.
- The writer, Anthro lecturer Garth and the audience gave prompting support, to see it through.
- I would have felt like putting a bomb under someone if it had not been so.
- I had given up seeing the second screening of Richard the Second to see this historic production.

Yours in faith,
Gail E. Kidd

BODY BUILDERS BOUNCE BACK

Dear Editor,

Re: Total Fitness Wimps. May I offer consolation to this obviously irresolute individual. Firstly I would like to say that the fitness/weights craze is utterly unsexist, unbogoted, not reserved for any socio-economic minority and as aesthetically effective on the female as the male body. I would suggest that 'wimp' is a victim of the sexist expectations of the woman's body as displayed in the media. Wimp should concentrate on how he/she desires to be. As to the bullying, I have trained in the gym for 2 years now and personally, having started with a small physique, experienced nothing but encouragement and good humoured jibes at my comparatively small musculature. With reference to 'orgasmic heaves', 'wimp' should be made aware that the overload principle ie the continuous adding of weight until muscular contraction fails, results in a powerful growth burn ie productive pain.

Further, all women should be made aware of the advantages of weight training as opposed to dieting which is a strictly negative procedure. Body builders can construct a slim, strong, healthy body whilst eating the same or even increased amounts of food.

As a member of the Health & Strength Club I would like to invite wimp and all other would-be trainers to come down to the gym between 5 and 7pm any week night, request the help of a club member, and receive non-sexist enthusiastic encouragement and advice.

Yours faithfully,
Ex-Wimp (Thomas)

FRACTIONATED PROTEIN

Dear Craccum,

Following in the footsteps of the great Gurus, Graham Watson parades as a staunch freedom fighter against the supposed divisive factions who supposedly haunt the corridors of AUSA.

Having been elected he promptly forms a faction, like all self-proclaimed faction fighters before him, and becomes the most factitious and self-righteous, like all self-proclaimed faction fighters before him.

Mark Pattenden adds his name to those true defenders of Queen, Country and the American way — Watson and Bell.

Bill

EPIPHANY AMONG THE CHEESE LABELS

Dear Editors,

Before approaching the crux of this letter I must inform you and your readers that during the two years I have been at this university I have tended to remain fairly apolitical and neutral in most of the issues and events concerning it. This may be to my pride or shame depending on how you look at it. However, I recently encountered an event on which I have strong views and feel compelled to write about.

On Tuesday 24 July of this year I had an experience which I will not forget - certainly not for a long time. Admittedly, I had had a pretty rotten day previous to the occurrence and I was feeling pretty hung up and just about at the end of my tether, and this factor may have influenced some bias in my perspective of the event, but you must judge for yourself.

Anyhow, I was just going to my first lecture of the day at 12 o'clock - the exact lecture theatre eludes me at the moment - and as is the case normally, students - you know, ordinary Joes like you and me - were milling about outside it, waiting to go in when suddenly the doors swung open in a great rush of wind and those inside began to come out! However, more was to come.

Anyhow, I entered, found a seat, and, approaching the predicament with my usual recklessness, I finally sat down. Now here comes the point of this letter: from out of my bag I took a pad on which to write notes, but, after much searching and rifling through assorted pieces of paper, iron tablets and my collection of Chesdale cheese labels, I realised to my horror that I could not find my pen — I could not find my bloody pen!

So I borrowed one.

I would appreciate it if this issue was brought to the public attention and there was some open discussion about it.

Love and kisses,
Slaggy Doogleburg

P.S. Have a nice day!

Dear Neil and Rangi,

Once again I continue my obsession to write to your paper, this time in reply to Charles Atlas (July 17 Kia Ora). Being a science student I tend to agree with you because I believe and follow the theory "that matter cannot be created or destroyed" and hence to increase torso muscle size matter must be obtained from somewhere, namely the cranium. It seems to follow that muscle increase is proportional to loss of one's consideration and friendliness. Unfortunately this has been based on similar experiences as yours.

In reply to Charlotte Atlas (24 July Kia Ora) you sound like my type of person. How about we get together and bend some iron bars or better still change parking positions of Bambinas, Minis and Kenworth trucks. Don't worry, I won't be "humiliated" by your "muscle-boundness". I'd rather be a "strong-men" than a nice person. Have a nice day, in front of the mirror.

In reply to J. Bates, I was talking to D. Lange the other day and he told me he's very sorry he won't be able to increase bursaries, but thanks for the votes anyway.

Till next time,
Agent Lemmon
'Someone with an axe to rind.'

P.S. Q: What was the first thing said by the person who spotted the leak at 3 Mile Island?
A: Ahhhh.....

KIWILAND FOR KIWIMAN

Dear Editor, John Bates or whoever,

Given that there are a limited number of places available in New Zealand universities and that New Zealand universities are paid for by New Zealand taxpayers, please explain to me one good reason why an overseas student should not be denied access when a New Zealand student wants that place?

Overseas students are a luxury not a necessity.

Yours,
Steve.

An answer to Steve's question really requires an extensive response because there are a number of reasons for continuing the access to New Zealand universities for overseas students. In brief, some of the reasons are:

Trade. The presence of overseas students leads to future leaders of many countries being more familiar with New Zealand products and more inclined to buy our export goods.

Aid. New Zealand has a committment to aid less developed countries. The real difference between giving, say, the Phillipines money for a thermal project and training Phillipinos in the required skills is that the Phillipines will benefit more from the latter. Both are a drain on New Zealand's resources but few would agree that they are luxuries.

Culture contact. Our position in the Pacific/South East Asian region will lead us further away from European markets. We must come to terms with this and one way of doing this is to better understand the people of this region. New Zealanders should be using the opportunity presented by overseas students to have contact with their cultures.

There are many more reasons for New Zealand hosting overseas students, some of which are of direct benefit to the New Zealand taxpayer (if that's what really matters). A fuller explanation of these reasons is contained in a submission available from the President of AUSA. The real solution to the problem of restricted access to any student is not to exclude a particular group but to extend educational facilities so that the demand for places can be fully met.

John Bates.

LOOKING BEHIND THE TERMINOLOGY

Dear Editors,

The very bitter attacks on certain feminists in *Kia Ora* indicate a total breakdown of communication has developed between the 'silent majority' of students, on the one hand, and 'activists' on the other. Yet the antagonism directed at the feminists appears to be based more on misunderstanding of what is being said, rather than on what has been said.

The feminists in question have adopted an 'ideological' use of terminology with the aim of focussing-in and bring-home significant issues to the reader. For example, 'men are rapists' is a false statement by definition, but used ideologically aims to get across an empirical reality: In most male-female power relationships in our society men are perceived and do indeed exercise more power than women. This can be tested and observed scientifically and presented as an argument of inductive science. It is a fact that men have an unequal share of power. Deductively one can say that, holding this to be true, any woman's ability to 'choose freely' (a job, her future, or whether to have sex with a man etc etc) is by definition, and from birth, inherently and measurably and significantly disadvantaged and, this being true, it may also be deduced that up to 100% of all women's choices/actions in their relationship to men would be significantly altered if women were in a more equal world to start with. Thus, we cannot be sure, for example, that in every case of a male/female sexual relationship the woman would have submitted had she had the social, economic, political and educational security behind her that her male counterpart has.

Feminists could go around scientifically trying to prove women's oppression — but who would listen? "Men are Rapists" is far more effective in stimulating responses and generating debate.

The only problem with ideologues, however, is that their statements of deduction are often too superficial to be taken seriously. The degree to which social, sexual, racial or economic interests are directly reflected in the consciousness and writings of the participants is always a matter of empirical determination and can never be known or deduced beforehand solely from a knowledge of the character of the class/race/sex interests as such.

That is, Louise Rafkin cannot say Document X is wrong *because* a male wrote it. And, Rangi cannot say Amnesty International is wrong *because* white, western middle-classes conceived of it. And communists cannot say Western Science is wrong because it serves the interests of the ruling class.

Signed Anti-AntiFeminists

THE PIPPED PIPER

To Craccum,

Yes, I got the name right, I'm paying for Craccum *not* Kia Ora. This magazine is for the students i.e. the majority which is over 2/3, right! O.K.! So why do the minorities get all the columns? Why do the Maoris get so much coverage, and did you ask permission to print Maori titles and change the name of our magazine? One can only conclude that some minority group has seized control of editorship and so is promoting a typical state propaganda type of publication. My suggestion is to run a Quiz in the middle pages as Craccum did two years ago which can ask questions of the students. Run it as a secret ballot like the elections and maybe you'll find a change (much needed) is wanted from the general populace of A.U.

To the students I say do something about this rubbish we get given (Not all, I liked Tracey Setter's column this week), the only thing needed for injustice to take place is for people just to sit back and let it.

Like marches, the only good a letter does is to draw attention to some salient fact, it remains for you - the people who pay the piper to call the tune, to actually get up from the cocoon of apathy and do something about this trash (or maybe not trash - it's up to you).

Yours a well & truly
gyped student

STUDENT ELECTIONS

Dear Rangi and Neil,

I've found this year's students' elections amazing. I'm amazed how candidates can stand up and tell people complete rubbish about the operation and finances of AUSA and know it's rubbish.

I'm amazed how people talk about democracy and yet rip down posters making sure opposing points of view aren't heard.

I'm amazed how people can talk about the rights of the majority but not the rights of the majority *and* the minority.

And I'm amazed that the Executive can be accused of spending money on issues that the majority of students don't agree with as whenever a contentious issue has been debated Exec has abided by the decision.

The representation issue has been brought up again and again by a disgruntled few. But if there's one thing some advocates of "the majority view" are unkeen on, it's open debate. Because debate has the amazing effect of exposing people to other people's views and breaking down bigoted attitudes.

Regards,
Bruce Cronin

THE RIGHT PIE

Kia Ora,

I felt that some answer should be made to the falacious literature circulated during the recently held Presidential elections by candidates John Dolan and Anthony Bell. They claimed the cafe made losses of \$186,609 in 1982 and \$186,932 in 1983. They even reprinted part of your Student Association accounts in one leaflet I saw. I emphasise the "part of."

Perturbed myself at the enormity of the loss they claimed, I ran to the Studass accountant. He showed me the exact account they'd reprinted — they'd cut it off in mid-field! Yes, the cafe does lose. And we are looking at it at present. But that loss is considerably lessened by income from such catering outlets as outside functions, coffee lounge and coffee bar.

This is the full excerpt taken from the 1983 audited accounts:

CONSOLIDATED CATERING ACCOUNT FOR THE YEAR ENDED 31 DECEMBER 1983		
1982	NET SURPLUS/(DEFICIT)	1983
126132	Cafeteria	-158097
-61477	Bakery	-28835
2426	Engineering School	2107
1257	Medical School	-57
-2448	Restaurant	-6836
61313	Coffee Bar	47571
0	Coffee Lounge	703
3690	Milk Bar	8314
61364	Functions	62380
0	Student Club	-6499
-59007	NET DEFICIT TRANSFERRED TO INCOME & EXPENDITURE ACCOUNT	-79249

Secondly, a beautiful pie-diagram was used by our "concerned students". Unfortunately it was based on their selective "part" of the account. If they were presenting accurate information to students (as they claim) they would have based their diagram on the actual allocation of your fees, as was done in an article in last week's *Kia Ora*.

I would therefore encourage students to take an interest in the accounts of their Student Association, but urge you not to believe at face value the inaccurate twistings of these accounts as presented by some people.

Cathy Flynn, NAO.

MISSING REMISSION

The Editor,

Peter Nigro was not the first person to lose any remission, but was the first person to lose all his discretionary remission as a result of possession of a bottle of liquor in a penal institution.

Apologies to those who have also partially lost remission as a result of such an offence.

C. Nigro

SHADOWS



SHADOWS

Programme of entertainment

TUE:	7-10pm 'Last Man Down'
WED:	4-6pm The Piano has been drinking... Andrew Weir (piano)
	7-10pm 'The Royal Tambourines'
THUR:	5-7pm Julian McKean
	8-10pm Richard Heptocrat & Co.
FRI:	8-11pm Vegetation
MON:	7.30pm (Women Only)
	Siren (Penni Bousfield, Karin Gorter, Nettee Bird)

STUDENT BANKING ON A PLATE.



Your Trusteebank really knows how to cater for the full-time student, with a complete range of Student Banking Services. And because all 320 branches are computer-linked, you can treat any Trusteebank as your own... all around the country.

Pick up your free Student Banking Services brochure now... it'll really help fill the gap.

Auckland Savings Bank



The one for all your banking needs.

BAND FILE

CIRCUS BLOCK FOUR
IN STONE IN STEEL

SNEAKY FEELINGS "Send You" (Flying Nun Records)

To start off with, I really like this L.P. It has everything in it which I like about music at the moment. It is honest (sometimes too honest), it is unpretentious, it is great.

Of the eight songs on the L.P., I like seven. My favourites at the moment would have to be "P.I.T. Song" and "Won't Change". The way the two songs merge from one to the next is brilliant. You get the impression that it is just one song which is slowly building up until it suddenly ends and leaves you feeling completely satisfied.

Production on the L.P. is amazing. Mathew's voice has a truly ringing sound about it. On "Not to Take Sides" he really shows us that he can sing. David's voice comes across just as well as it does live, the Byrdsian/Dylan snarl which really adds a lot to the Sneaky Feelings sound.

Sneaky Feelings have just completed a tour, and should be playing in Dunedin soon. If you haven't seen them, do. If you have and find them likeable, why not go and support them by buying their L.P.

This has to be the best record I have bought so far this year.

— L.L. CORDUROY

LOW PROFILE Elephunk In My Soup

CIRCUS BLOCK FOUR In Stone In Steel (Jayrem Records)

First a preamble. Followers of NZ music (not so much the musicians themselves) have tended to become as regionally parochial as their regional rugby counterparts. Music has tended to be categorised into Auckland, Wellington, Christchurch and Dunedin boxes, and although it cannot be denied that there are differences in sound, style and approach, this labelling can be dangerous and destructive. Here in Dunedin many touring bands are passed over or not given a fair hearing because they do not fit the role of angry melancholy young men and women.

Such judgement may not be unjust if that is what you perceive to be an essential aspect of music, but this judgement is all too often passed before the band have opened their mouths or struck a note. The Pelicans and the Miltown Stowaways are two such victims that come to mind. Both excellent New Zealand bands whose anger at the world may not be as sublime and usually obvious as some of our local heroes, but is nevertheless evident (the Pelicans' "Banana Dominion"). Every band should be judged on its own merits regardless of its geographical base — in essence judge the sound not the city. On to the records.

Circus Block Four's single 'In Stone In Steel' is an excellent record debut for the band in that two contrasting moods of the band are presented;

social and political if you like. 'In Stone In Steel' deals with the perhaps rather laboured subject of city life — concrete jungle, etc. As the press kit for the single states it is a 'bright, driving, almost manic song'. I agree with the bright and driving but manic implies a lack of structure which is not accurate. The song becomes more enjoyable with each listening.

The flip side's 'Dead Inside' is an enchanting song similar to The Smiths 'Reel Around the Fountain' especially in its subject matter (a personal obsession with someone) and in its haunting melody, thankfully it lacks the pretension of The Smiths effort. Jeff Thorpe's bass line enhances the song, with his acoustic guitar work bringing the song to a beautiful close.

Circus Block Four are a Wellington based band and are (according to the press kit) a hard working touring band so hopefully we'll see them in the not too distant future. This single is worthy company to be placed next to your newly acquired Pink Frost and The Great Unwashed singles.

Low Profiles' E.P. 'Elephunk In My Soup' is something completely different. As the title suggests it is not to be taken seriously. Besides 'Elephunk' the other two tracks are 'Wirtlesnagging' and 'Stripes'. 'Elephunk' is a blatantly funky fun song with silly lyrics ... "... I've always had trouble with my mother ... I've always had trouble socialising, but I can do Elephunk". etc. etc. Perhaps they are aiming to try and create an 'Elephunk dance craze' in all the trendy night clubs in Auckland — laughing up their sleeves at the same time.

"Wirtlesnagging" is an amusing and witty stab at suburban neurosis, middle age, etc. but once you get the impression that this studio band is doing it for their own sake. That's alright, but the average buyer of NZ records hasn't got that much money to throw around and at this point in its growth perhaps the New Zealand music industry should concentrate on producing more serious less self-indulgent records. On the other hand if you want to buy light-hearted silly records, you might as well buy New Zealand ones.

— N.S.

With thanks to Critic.

THE SILVER TASSIE

By Sean O'Casey

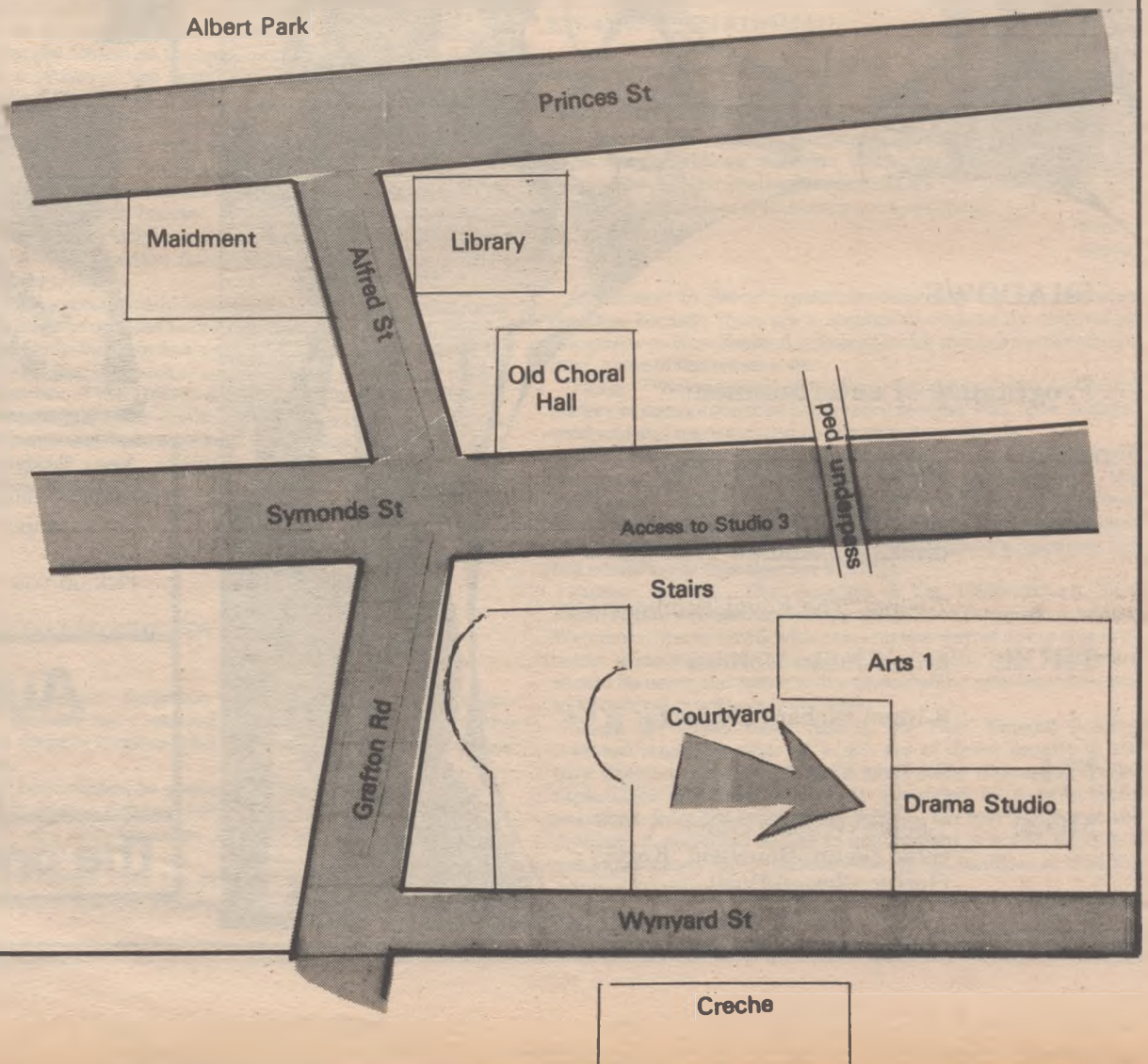
THE
DRAMA STUDIO

— AUCKLAND'S NEWEST THEATRE —

— LEVEL 3
ARTS/COMMERCE BUILDING
14a SYMONDS ST.

The Drama Studio Entrance

Diploma in Drama
August 2-12
Wed-Fri 1pm Wed-Sun 6pm
Students \$3.50 Waged \$5.00
Bookings and Enquiries
ph 737-999 ext 7344



PANUI

NOTICES

General

STATION MANAGER RADIO ACTIVE FOR 1985

Radio Active 89FM is Victoria University of Wellington's Student Radio.

The station will continuously run for approximately 40 weeks and will probably be on air for 19 hours a day the manager's job is full time for the period 1.1.85 to 31.12.85. The radio has a staff of around 50 people and an annual budget of \$70,000.

The position is paid and the net weekly income is around \$125, plus other benefits, however the experience to be gained from this job is immeasurable.

The main emphasis of the job is on co-ordinating advertising sales, developing promotions, continuing PR and image building with Wellington's advertising agencies. The station is a market specialist, targeted primarily at students aged 18-24 years but with an actual audience profile of 15-30.

Preference will be given to marketing and commerce graduates or undergraduates, although all applications will be fairly considered.

For more information call Charles Cooper, Station Manager 89FM on Wellington 738-939, or write to Radio Active 89FM, c/- VUWSA Private Bag, Wellington.

POLITICS OF TOBACCO

Peter Taylor, a professional investigative journalist, is in NZ to publicize his book 'Smoke Ring, The Politics of Tobacco'. The book is a detailed investigation into the relationship between Governments and the tobacco industry in Europe, America and the third world.

He will be speaking in the University conference centre Thurs 2nd at 8pm. Admission free.

FLATMATE WANTED

Large room with fireplace. \$35.00 per week. Close to city. Phone 869-529, evenings.

LOST FRIDAY 20TH JULY

Black 1984 Diary. Urgently needed. Please contact Karen Sidney Ph 765-871.

LOST

Lost my student planner/diary last Friday (20th July). Somewhere between Alfred St and the ASB. Needed urgently.

If found please hand in to the Custodian. Much appreciated. Thanks! S. McCann.

LOST PROPERTY AUCTION

AUSA's Annual Lost Property Auction will take place in the Quad at 1pm on Thursday 2 August. Come along and bid for all sorts of things at never to be repeated prices. Proceeds to the Creche and Needy Students' Fund. Remember Quad 1pm on Thursday.

Politics

CUBAN LEADER TO VISIT NEW ZEALAND

Guillen Zelaya, Vice-President of ICAP (Cuban Institute for Friendship with the Peoples) will visit New Zealand from August 1st to 4th. He will be the first Cuban leader ever to visit this country.

As a young man, Senor Zelaya participated along with Fidel Castro and Che Guevara in the expedition of the yacht 'Granma' to Cuba

which marked the beginning of the struggle which overthrew the hated Batista dictatorship.

Since then, Senor Zelaya has played a prominent role in the momentous events in Cuba, the first Latin American country to abolish hunger, illiteracy and most infectious diseases, and whose people enjoy the highest standard of living in that troubled continent.

During his stay Senor Zelaya will be speaking to students, trade unionists and Labour Party activists, and addressing the inaugural meeting of the Auckland branch of the New Zealand-Cuba Friendship Society on Friday August 3rd. He will also be addressing public meetings in Wellington and Christchurch later in the tour.

Further details may be obtained by contacting Felicity Brereton, New Zealand-Cuba Friendship Society, phone 276-3061, or writing c/o 169 Avenue Rd, Otahuhu. If no reply phone 276-7115.

Clubs

ANTI-RACISM MOVEMENT

The Anti-Racism Movement is still meeting at 1pm every Tuesday in the Exec Lounge. This meeting we're discussing racism and racist attitudes, using role plays. All welcome!

AMNESTY INTERNATIONAL (A.I.)

Tuesday July 31 1-2pm Room 1206 Arts/Commerce Building, Symonds St.

Special Guest: Otma Ruther from the West German A.I. Section.

Wednesday August 1 7.30pm Room 144, Studass (behind T.V. room).

Video: 'The Making of a Torturer'. No Charge. All Welcome. Contact: Paul Hitchfield 495-542.

PARACHUTING

Due to popular demand another 1st jump parachuting course is being run. See Aviation Sports Club notice board or phone 792-480 for details.

Give it a go - go Skydiving.

VIDEO KLUB PRESENTS

"48 hours" and "Richard Pryor Live in Concert". Tonight (Tuesday) in the Exec. Lounge. Members free, Non-members \$1. Membership \$5. Starting 6.30pm. Refreshments available.

Two Week's to Rocky And We Don't Mean Boxing.

EVANGELICAL UNION

HEAVEN:

- a place where Persil-white angels tinkle on harps?
- a delicious Paradise where anything good goes?
- a final resting place for the spiritually elite?

'THY WILL BE DONE ON EARTH AS IT IS IN HEAVEN' - Jesus, Matthew 6:10 - the focus of a talk by a Guest Speaker in the Functions Room, 1pm, TUESDAY 31st July.

What is God's will and how is it done in Heaven?

Have our prayers any influence on God?

Do the activities of Heaven have any influence on what happens to use?

ELECTIONS

Helpers are needed for the elections on August 1-2 - polling clerks and vote counters. See the list at reception.

COMPUTER

Spectrum; PASCAL on 48K! Excellent, full implementation. Great for varsity courses. Also graphics. Bargain price. Ph 600-502.

Theatre

THEATRE WORKSHOP PRESENTS

Kyogen - Two Japanese comedies. Little Theatre Tuesday 31 July 1pm, Wednesday 1 August - Friday 3 August 1pm & 6pm. Saturday 4 August 6pm. Public: \$4, Students \$2.50.

MAIDMENT THEATRE

Sun 29 July 2.30pm

GAUDEAMUS. This outstanding, new chamber music group will present a concert featuring Mozart Trio K496, Schubert Quartet D667, Gillian Whitehead Song Cycle, performed by Coral Bognuda, Anthea Moller, David Nalden, Janice Forsythe, John Middleton, Tamas Vesmas. Bookings 31 Prince St. School of Music. Tickets \$5 - \$3 - \$2.

Wed 1st Aug 1.30pm & 8pm

'LA REVOLUTION FRANCAISE' A Rock Opera by French students presented by Theatre Volant University of Waikato. Tickets \$4, students \$2 Bookings French Dept - Univ. of Auckland 737-999.

Frid 3 Aug 1pm

'FRIDAY AT ONE'. The public are very welcome to attend these immensely popular free lunchtime concerts presented by the School of Music. Today's concert is the *

LITTLE THEATRE

Saturday 28 July, 8.00pm. Chris Thompson - the outstanding Folk-solo performer in 'Folk, Blues and Beyond'. Tickets \$5.00.

Tues 31 July to Fri 3 Aug 1pm

Wed 1 - Sat 4 at 6pm

'KYOGEN' Two Japanese comedies. This is a gem of an opportunity to see comic plays from the Kyogen tradition performed authentically in full Japanese costume. Co-directed by Rowena Yalland and Helen Waki the translator of the plays. The production is by the University Theatre Workshop. Tickets \$4, Students \$2.50. Door sales only.

INTERNATIONAL STUDENT TRAVEL POSTER DESIGN COMPETITION

First prize US\$1000 (NZ\$1600 approx.)

The Zurich-based International Student Travel Conference has organized an international poster design competition to promote the International Student Identity Card (ISIC) in 1985.

The competition is open to all young designers under 30.

Student Travel Services (NZ) Ltd is promoting the competition in New Zealand, particularly amongst students in fine arts and design courses in universities, technical institutes and teachers' colleges.

The design may be any number of colours and should be A3 size incorporating:

- The words 'International Student Identity Card'
- A visual interpretation of the Student Identity Card
- The red 'big S' symbol
- The International Student Travel Conference logo
- An area suitable for overprinting in foreign language.

Entries must be submitted to Student Travel New Zealand by September 15. The best 10 entries will be sent to the ISTC in Zurich for judging. The top international entries will be mounted in an exhibition in Seville, Spain, in February 1985 to mark the International Youth Year.

For more information contact your local student travel office or write to:

Free Post 113
ISIC Scheme
P.O. Box 9744
WELLINGTON (no postage required)

1985 AUSA MEDIA POSITIONS

Nominations will soon be opened for the following 1985 positions:

KIA ORA : Editor
Technical Editor
Advertising Manager
Distribution Manager

CAMPUS RADIO : Station Manager
Assistant Station Manager
Technical Director
Technician
Programme Director
News Editor
Production Manager
Advertising Manager

Nomination forms are available from the Students Association Office.

Film

MAIDMENT LUNCHTIME MOVIES

Mon 6 Aug 1.05pm 'LADY CHATTERLEY'S LOVER' R18. The classic of erotic literature. Admission only \$1.

RESEARCH OFFICER

Applications are invited for the position of Research Officer at the New Zealand University Students' Association's office in Wellington.

The successful applicant would be one of two Research Officers, responsible to the National Executive and President, and would assist the Association's elected officers in the implementation of NZUSA's policies.

Duties would include preparation of submissions and reports, working on research projects and liaising with Departmental and University Officials.

Applicants should have a tertiary education - preferably a degree in the social sciences - and a sympathy for NZUSA's membership and policies. Previous experience in research work would also be an advantage. A good understanding of statistical methods is desirable and applicants should be able to write lucidly and concisely. Advisory and advocacy skills would also be required.

Conditions of employment and salary would be in accordance with the NZUSA Employees Collective Agreement. The salary range envisaged would be on a ten point scale, ranging from \$16,705 to \$21,294 according to experience.

Written applications, including details of qualifications, relevant experience and two (or more) references should be sent to:

The President
NZUSA
P.O. Box 9047
Courtenay Place
WELLINGTON.
Applications close on Friday 3 August 1984.

Kia Ora : For REAL WRITERS

(Staff Meetings,

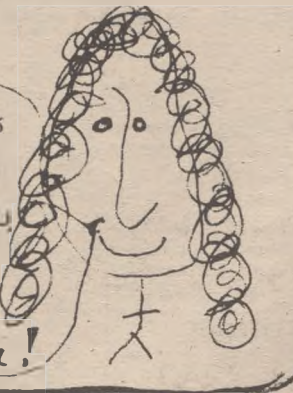
Tuesday 1pm -

ALL WELCOME)

Well, ah...
I'm working on my novel
(Gooey, cool), and plan
to be the great New Zealand
writer.



On yeah? There's
great literature on
campus, plus petitions,
lectures and current
events. I'd rather
work for Kia Ora!



PATAI

QUESTION OF THE WEEK

How's your work going?



Kim - Oh, terrific
Anna - Two assignments behind!
Nathan - Fine, I'm making good use of the study break!



Martin
Very slowly. I've been busy earning money so I don't have much time.



Mark
Good



Bridget - It's not!
Sarah - I'm up to date.
Elizabeth - I couldn't be any more behind.



YOU can have a working holiday in the USA, Canada, Britain, or Ireland. **Overseas** exchange programmes from STS. **IF** you are a student or teacher trainee, **WE** can arrange it. **Enquire Now,** before August-September

Send this coupon to:
Freepost 113
Exchange Programmes
Student Travel Services
PO Box 9744
Courtenay Place
Wellington

Or contact
our head office: 15 Courtenay Place,
PO Box 9744, Wellington. Tel: 850-561.
our Auckland office:
61 Shortland Street,
PO Box 4156, Auckland. Tel: 399-191.
or one of our authorised campus agents.



STUDENT TRAVEL
SERVICES (NZ) LTD

Please send me information on exchange programmes to:
The USA Canada Britain Ireland
(please tick)
Name _____
Address _____

BEAT THE BURSARY BLUES
(the unkindest cut!)

Have the kindest cut, perm, or colour with **Cut Above** cash coupons



Cut
ABOVE

Valid only at
Cut Above... St Kevins Arcade, 'K' Rd
Mon-Thurs... but not late nights. Ph 734-232

\$10 off

ladies
cut and
blow wave

\$7 off

men's
cut and
blow wave

\$20 off

perm
henna or
highlights

\$5 off

comb on,
semi-permanent
colours

CUT APPROPRIATE COUPON TO OBTAIN DISCOUNT