



NAVIGATING DATA IN IDI TO UNLOCK REFUGEE SETTLEMENT TRAJECTORIES

Insights from population data within the IDI

By Arezoo Malihi, Annie Chiang, Jay Marlowe, Barry Milne, Dan Exeter

Acknowledgement

Stats NZ is the source for any tables, graphs, or data (supplied by Stats NZ) that are quoted in this presentation. Disclaimer – We take full responsibility for the paper, that Stats NZ will not be held accountable for any error or inaccurate findings within this presentation. We acknowledge that access to data is in accordance with the Statistics Act 1975.

DISCLAIMER (IDI)

These results are not official statistics. They have been created for research purposes from the [Integrated Data Infrastructure (IDI) and/or Longitudinal Business Database (LBD)] which [is/are] carefully managed by Stats NZ. For more information about the [IDI and/or LBD] please visit <https://www.stats.govt.nz/integrated-data/>.

DISCLAIMER (IRD Tax Data)

The results are based in part on tax data supplied by Inland Revenue to Stats NZ under the Tax Administration Act 1994 for statistical purposes. Any discussion of data limitations or weaknesses is in the context of using the IDI for statistical purposes, and is not related to the data's ability to support Inland Revenue's core operational requirements.

DISCLAIMER (Census)

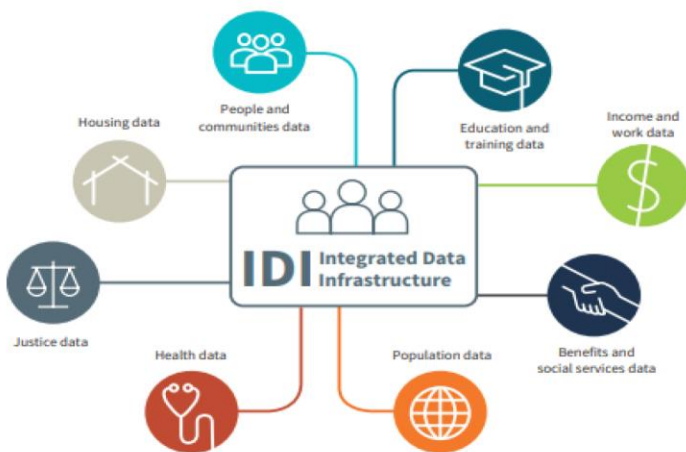
Access to the data used in this study was provided by Stats NZ under conditions designed to give effect to the security and confidentiality provisions of the Statistics Act 1975. The results presented in this study are the work of the author, not Stats NZ or individual data suppliers.

WHAT IS IDI AND HOW WE GOT OUR REFUGEE DATA

Data in the IDI September 2018

Stats NZ
Tatouranga Aotearoa

Stats NZ's Integrated Data Infrastructure (IDI) is a large research database containing de-identified microdata about people and households.



The IDI contains person-centred microdata from a range of government agencies, Stats NZ surveys including the 2013 Census, and non-government organisations. For more information about data in the IDI, see www.stats.govt.nz/integrated-data/integrated-data-infrastructure

The Longitudinal Business Database (LBD) complements the IDI with microdata about businesses. For more information about data in the LBD, see www.stats.govt.nz/integrated-data/longitudinal-business-database

Health data

- B4 School Checks – from 2011
- Cancer registrations – from 1995
- Chronic conditions – from 2007
- General medical services claims – from 2002
- Health tracker – 2006-13
- Laboratory claims – from 2003
- Mortality – from 1988
- Immunisation – from 2006
- National non-admitted patient collection – from 2007
- Pharmaceuticals – from 2005
- PHO enrolments – from 2003
- Population cohort demographics and addresses – from 2004
- Mental health and addiction – from 2008
- Publicly funded hospital discharges – from 1988
- National Needs Assessment and Service Coordination Information System (SOCRATES)
- Maternity – from 2003

Education and training data

- Early childhood education participation – from 2008
- Primary education – from 2007
- Secondary education – from 2004
- Tertiary education – from 1994
- Industry training – from 2001
- Targeted training – from 2001
- Adult competency assessments – from 2014

Benefits and social services data

- Benefits – from 1990
- Youth services – from 2004
- Children's Action Plan – from 1996
- Working for Families – from 2003
- Child, Youth, and Family – from 1991
- Student loans and allowances – from 1992
- ACC injury claims – from 1994
- Family Start – from 2008

Justice data

- Recorded crime: offenders – from 2009
- Recorded crime: victims – from 2014
- Court charges – from 1992
- Sentencing and remand – from 1998

People and communities data

- Auckland City Mission – from 1996
- Migrant Survey – from 2012
- Driver licence and motor vehicle registers
- Longitudinal Immigration Survey of NZ – 2005-09
- General Social Survey – 2008-2016
- Disability Survey – 2013
- Te Kupenga – 2013

Population data

- Border movements – from 1997
- Visa applications – from 1997
- Departure and arrival cards – from 1997
- 2013 Census
- Births, deaths, marriages, and civil unions – from 1840

Income and work data

- Tax and income – from 1999
- NZ Income Survey – from 2006
- Household Labour Force Survey – from 2006
- Survey of Family, Income, and Employment – 2002-10
- Household Economic Survey – from 2006

Housing data

- Tenancy – from 2000
- Social housing – from 1980



Stats NZ operates a five-safes environment, balancing privacy and confidentiality with data insights.

For information about applying to use the IDI or to learn about how we keep the data safe, see www.stats.govt.nz/integrated-data

DEFINING REFUGEE SUB-GROUPS

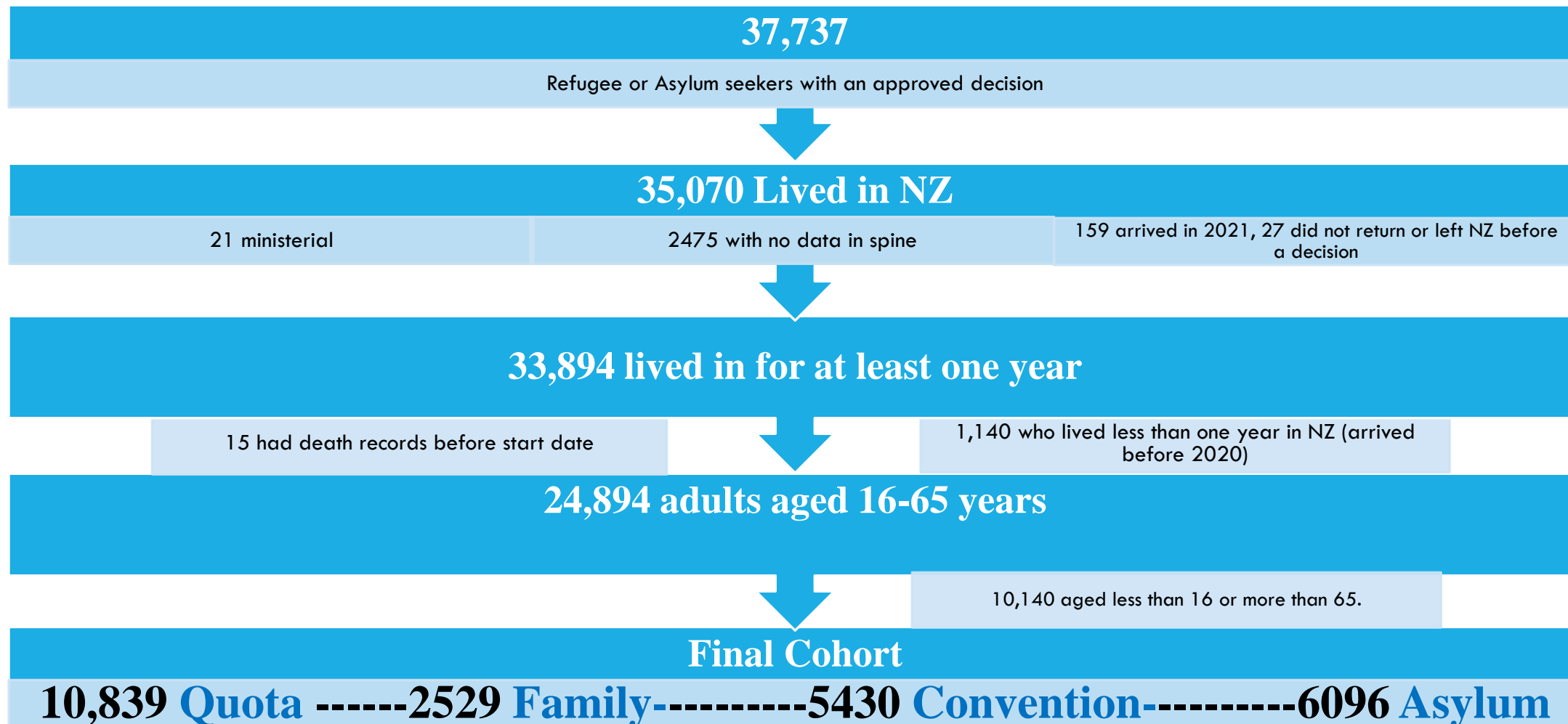
Quota refugees Referred by the United Nations High Commissioner for Refugees and subsequently selected by Immigration New Zealand for residence.

Refugee Family Support Category -- refugees already in New Zealand can 'sponsor' family members for New Zealand residence through the RFSC.

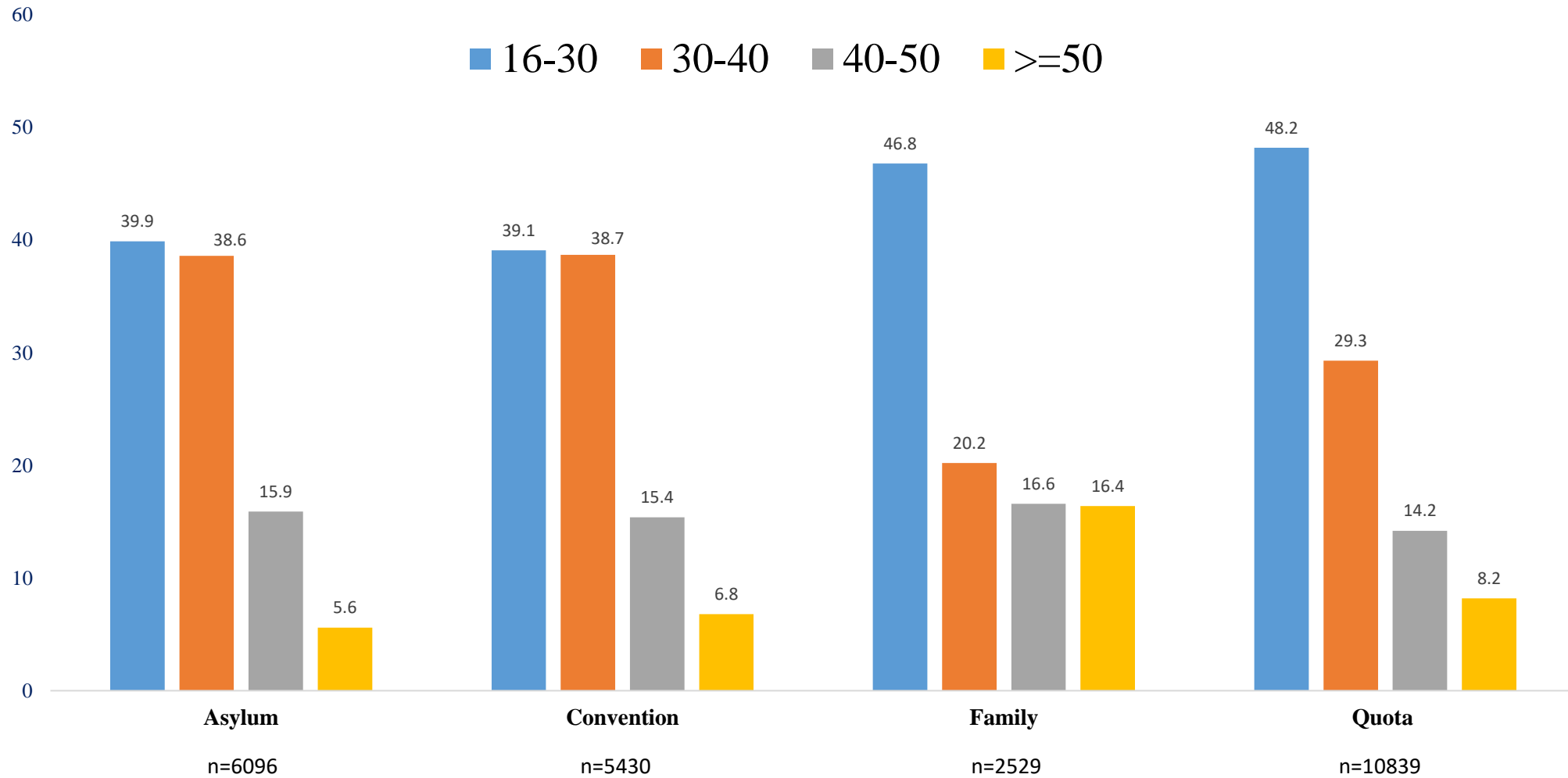
Convention -- Asylum seekers who have been recognised under the Convention as a refugee in New Zealand.

Asylum seeker -- Unsuccessful convention refugees, accepted decision to be assessed as asylum seekers but eventually did not become convention refugees.

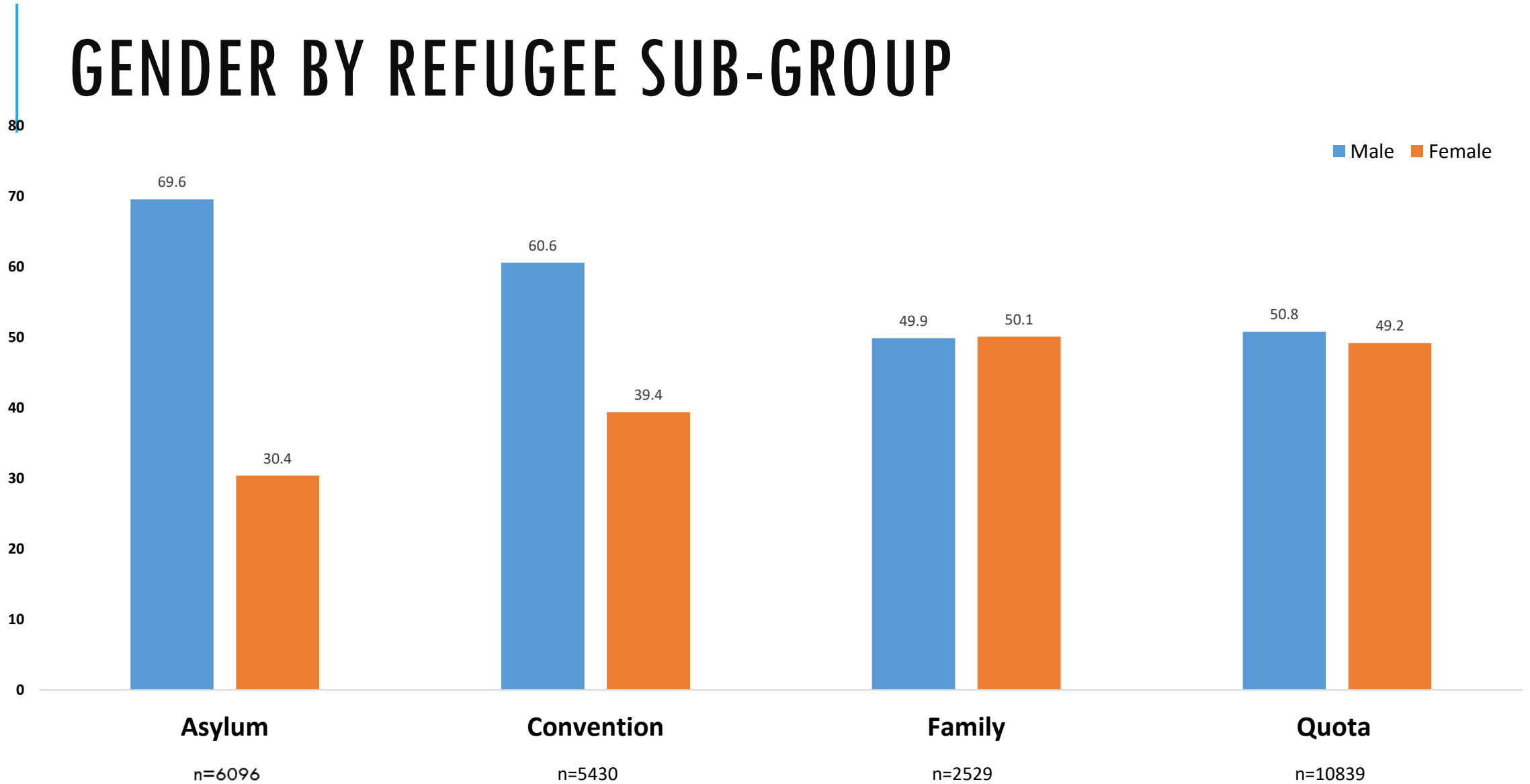
FLOW CHART OF ADULT REFUGEE COHORT



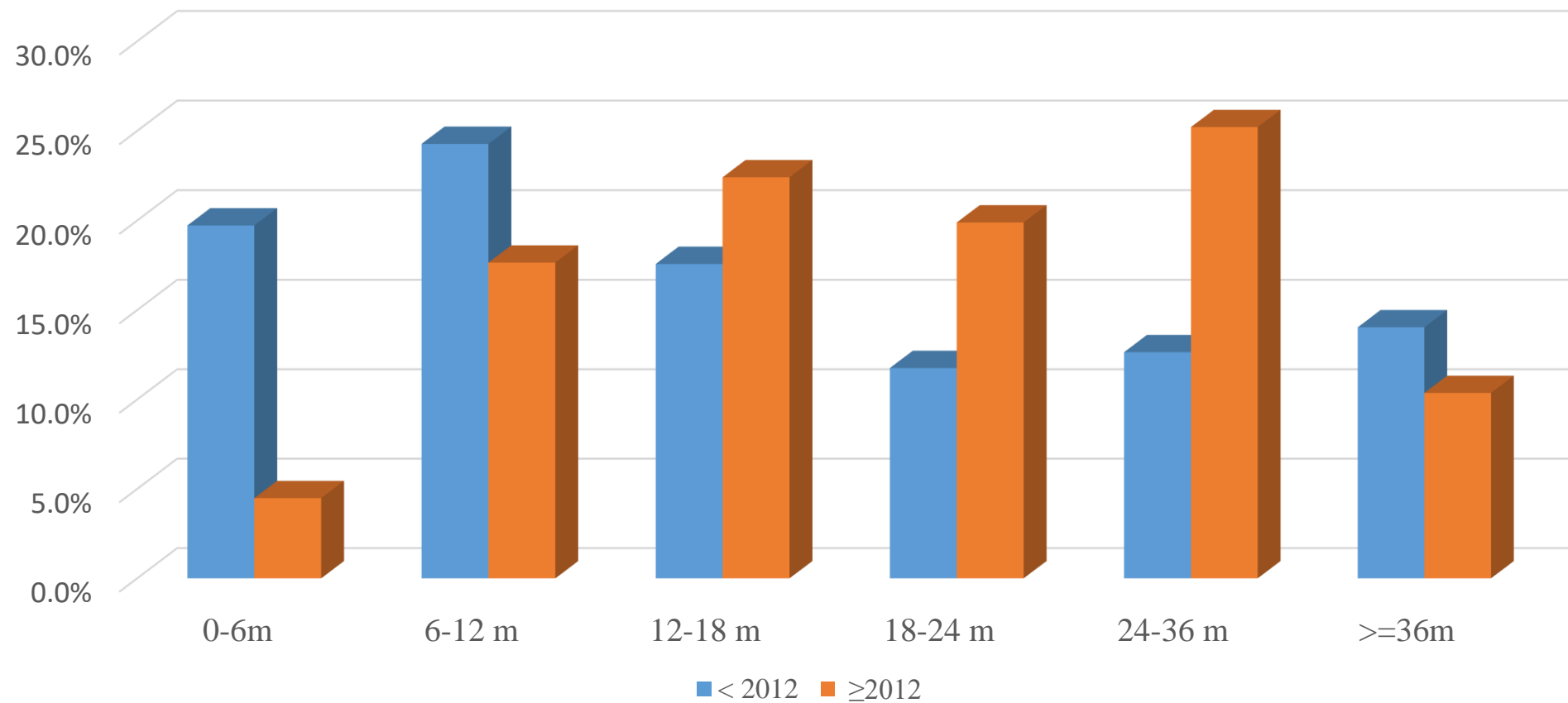
AGE BY REFUGEE SUB-GROUP



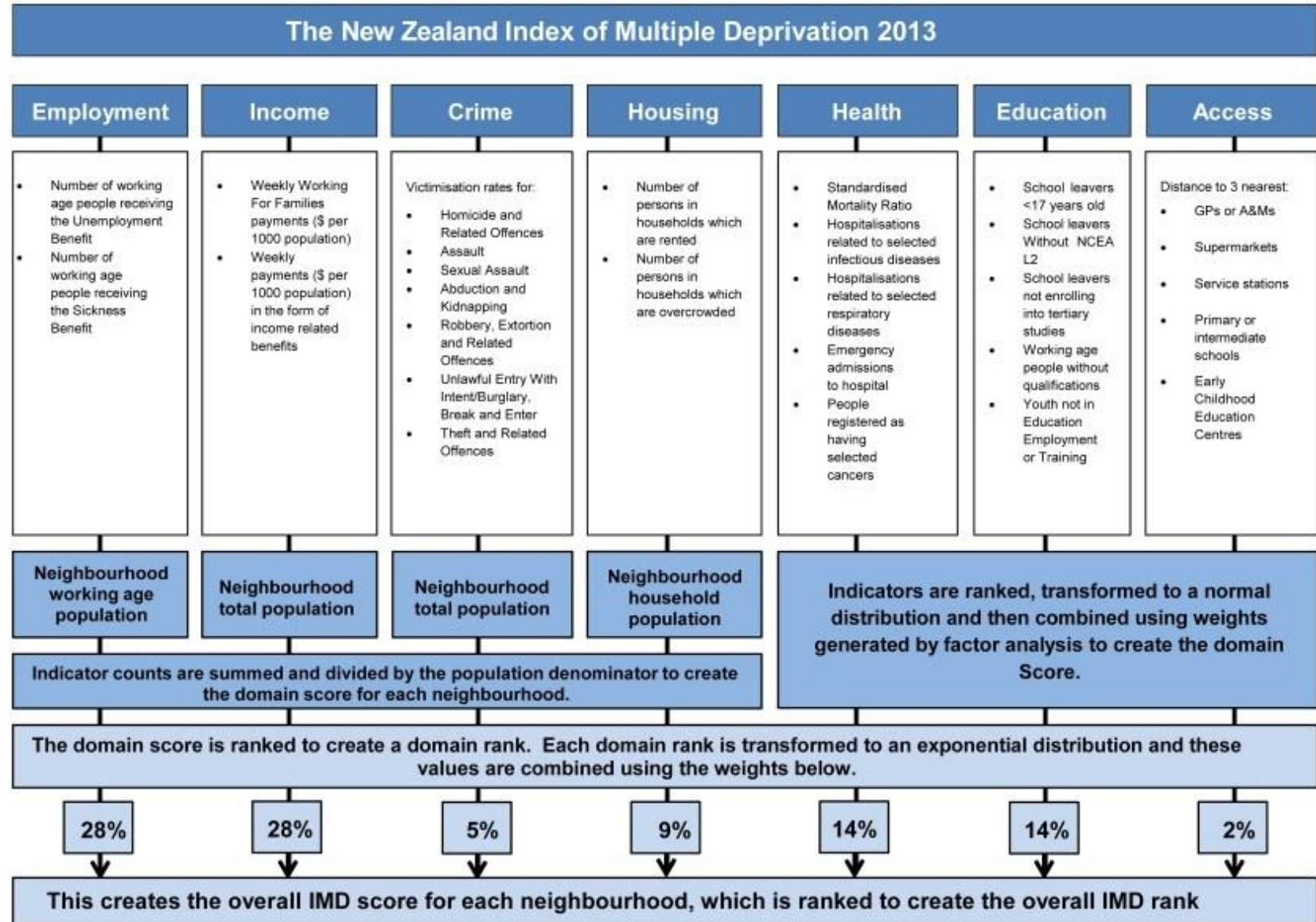
GENDER BY REFUGEE SUB-GROUP



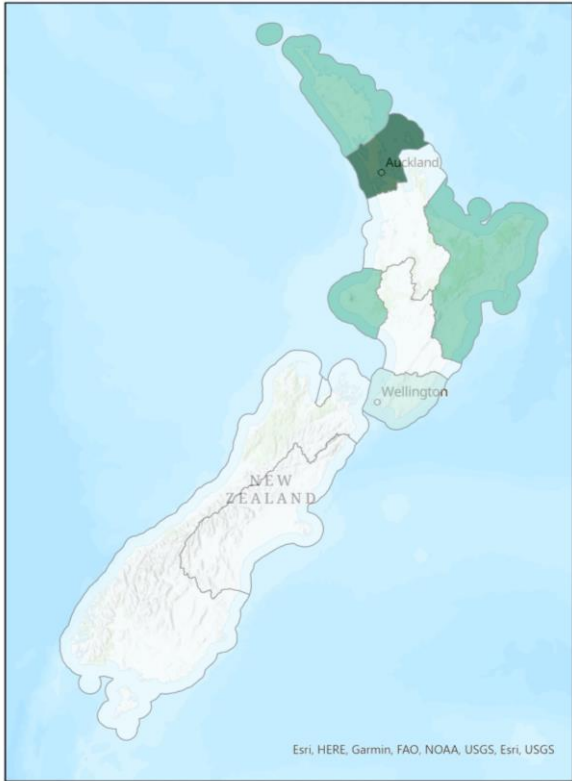
TIME TO CONVENTION STATUS



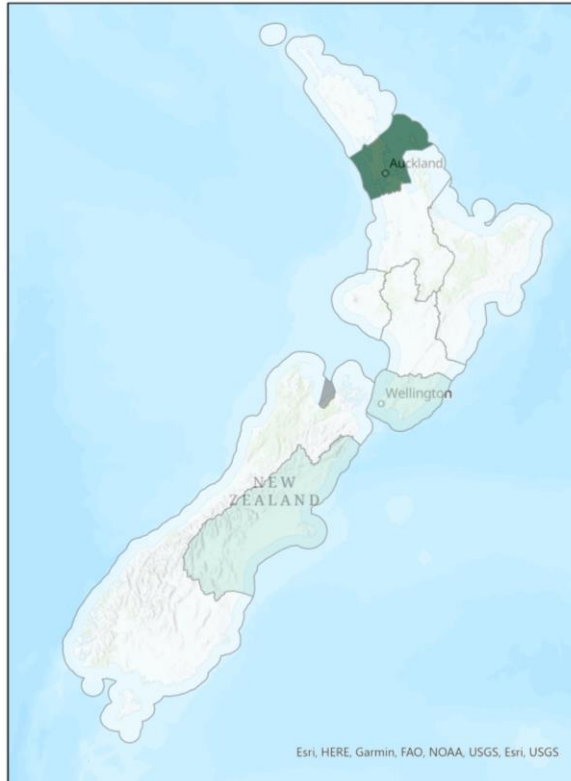
DEPRIVATION MEASURE: NZ INDEX OF MULTIPLE DEPRIVATION 2013



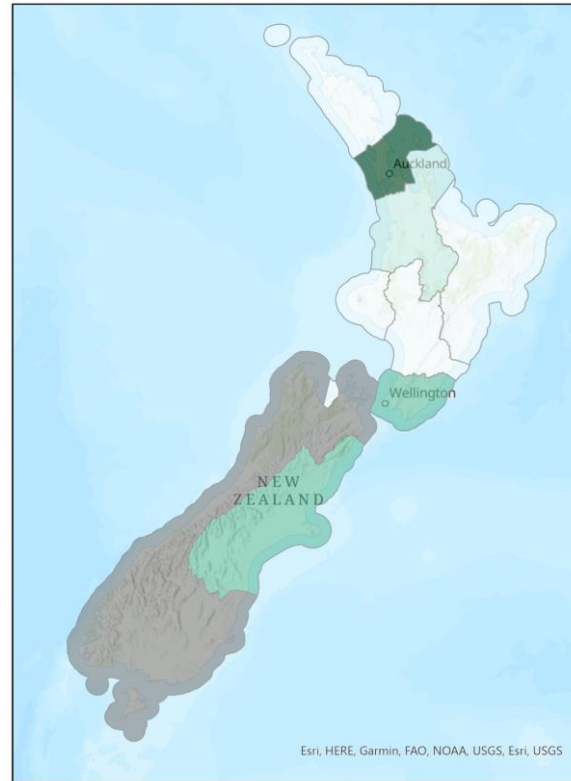
WHERE ARE REFUGEES & ASYLUM SEEKERS RESIDING?



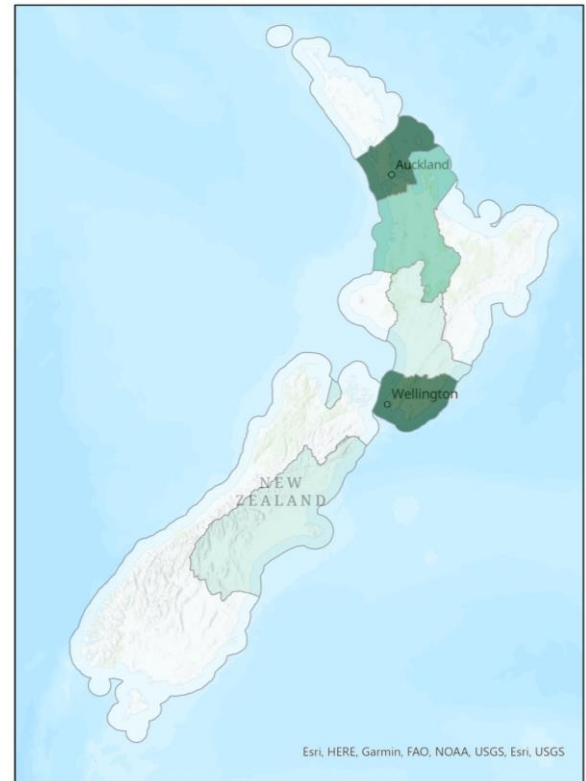
Asylum Seekers



Convention

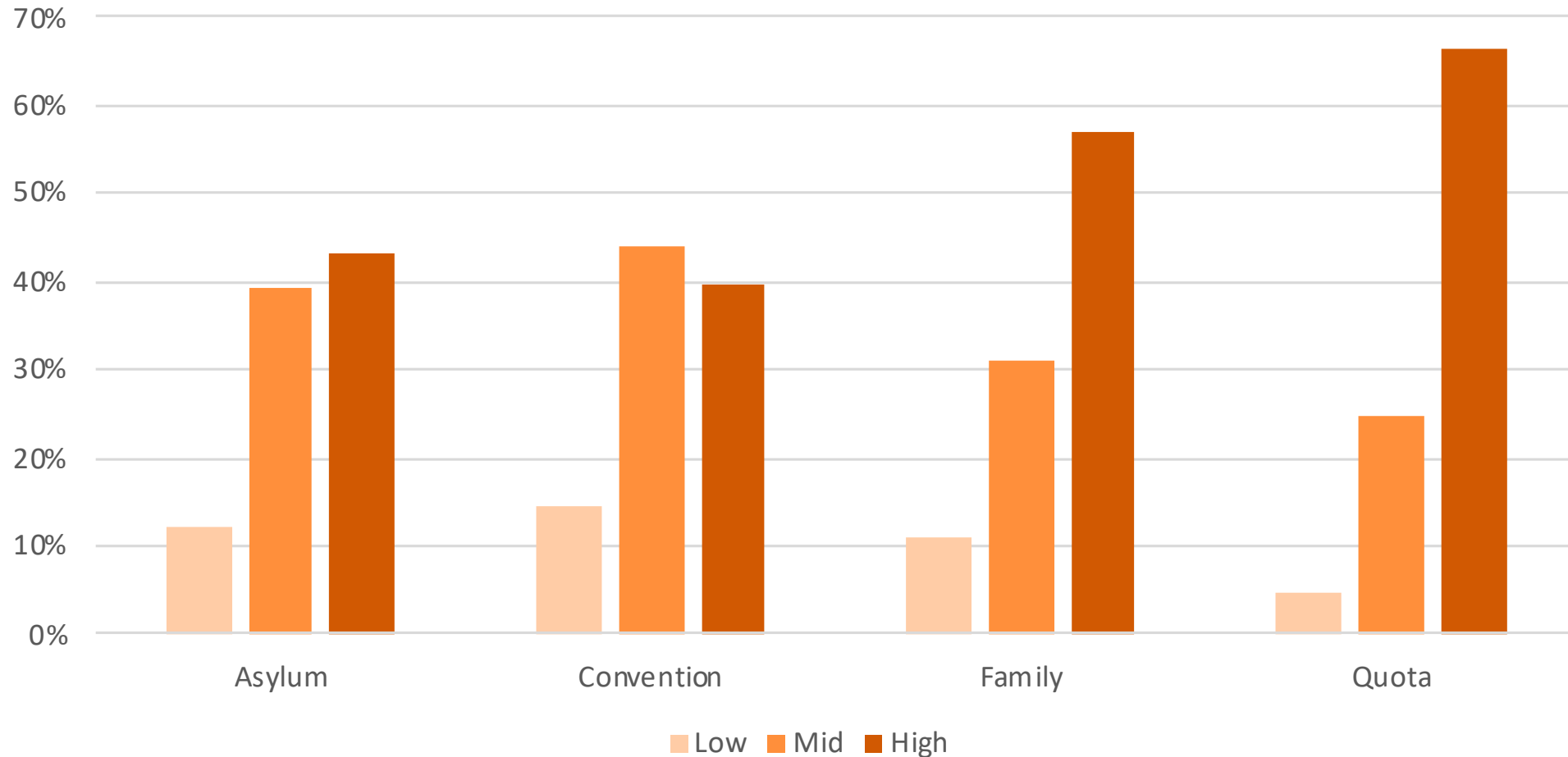


Family

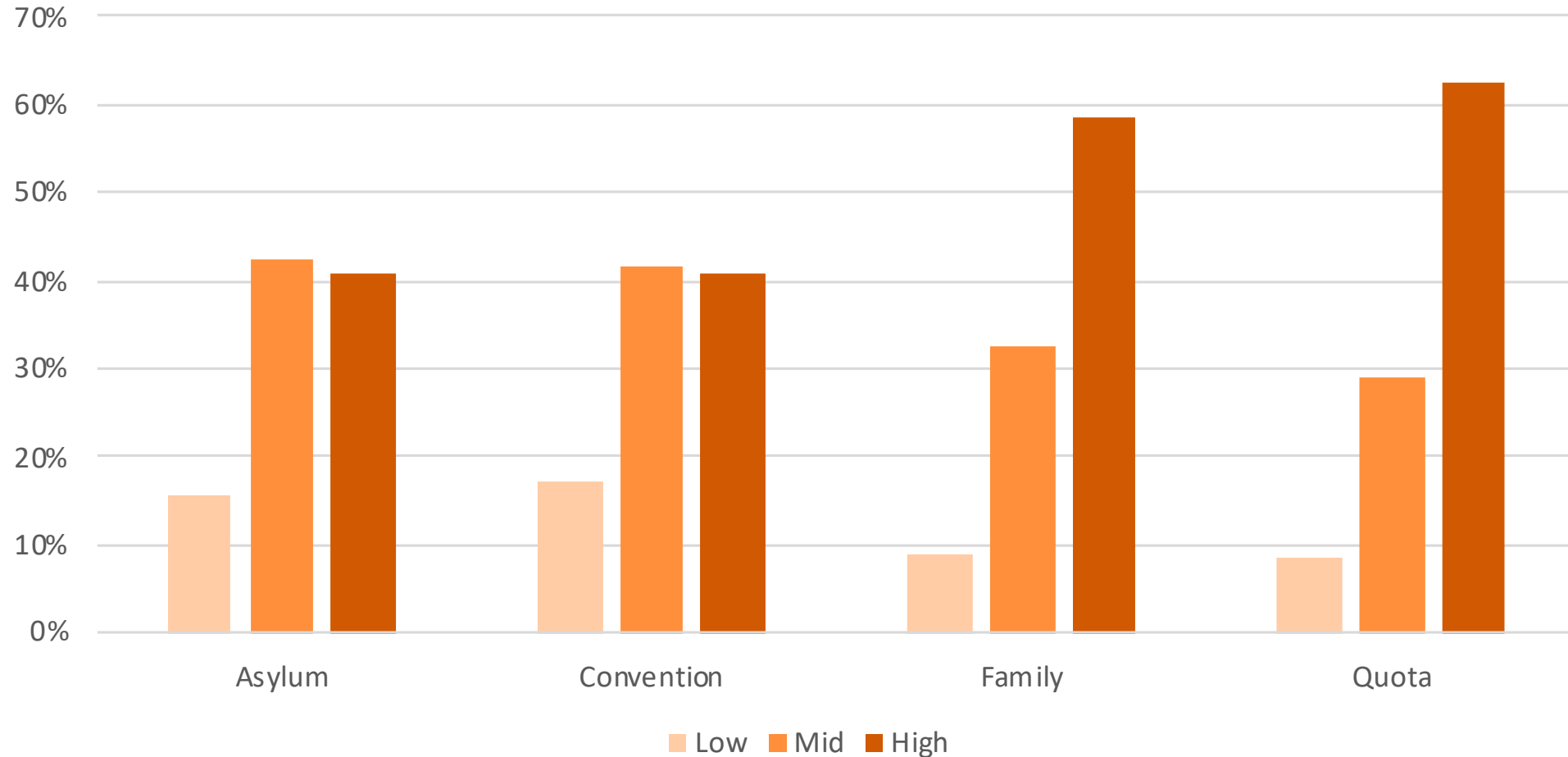


Quota

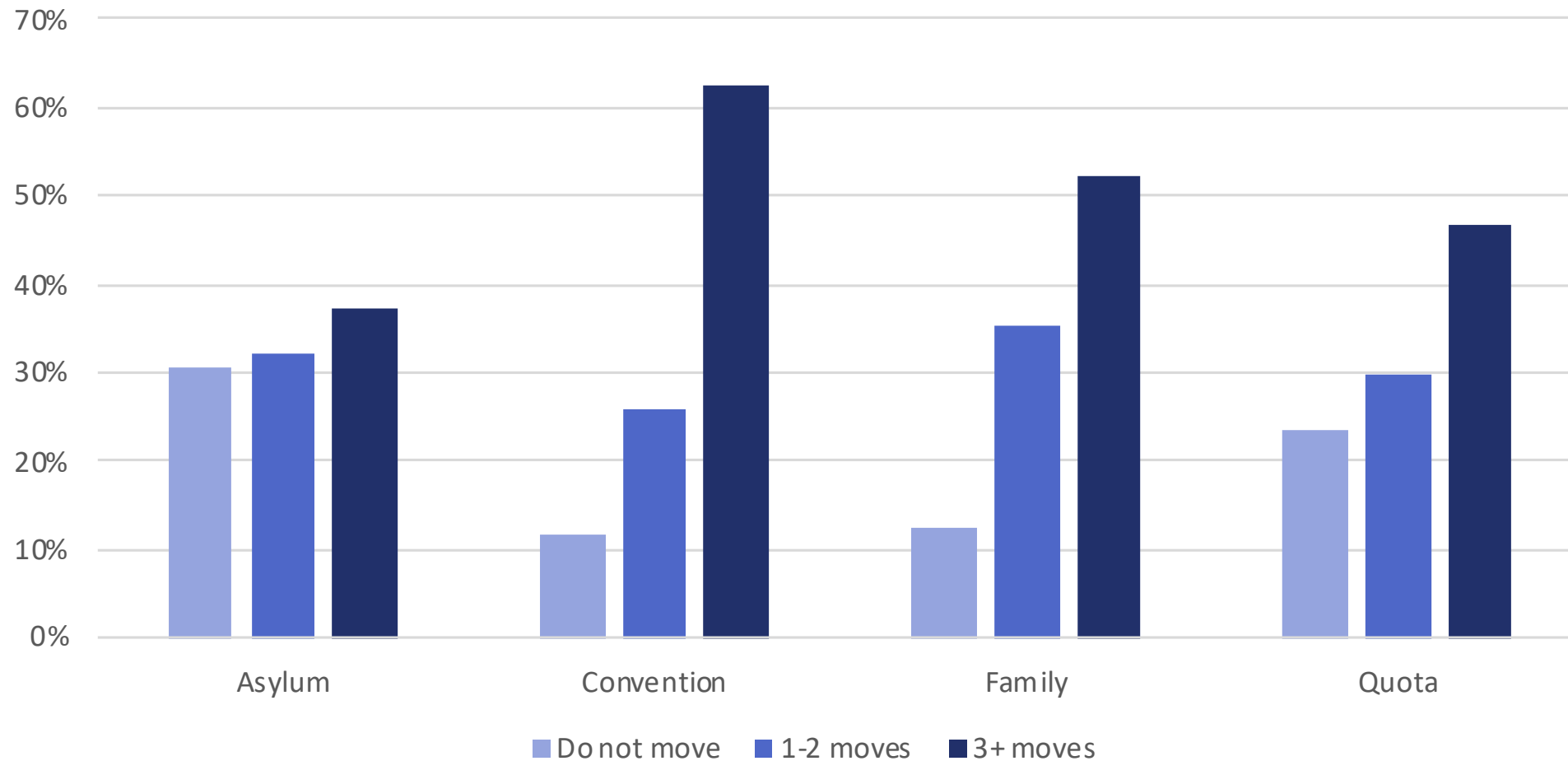
DEPRIVATION LEVEL OF FIRST ADDRESS



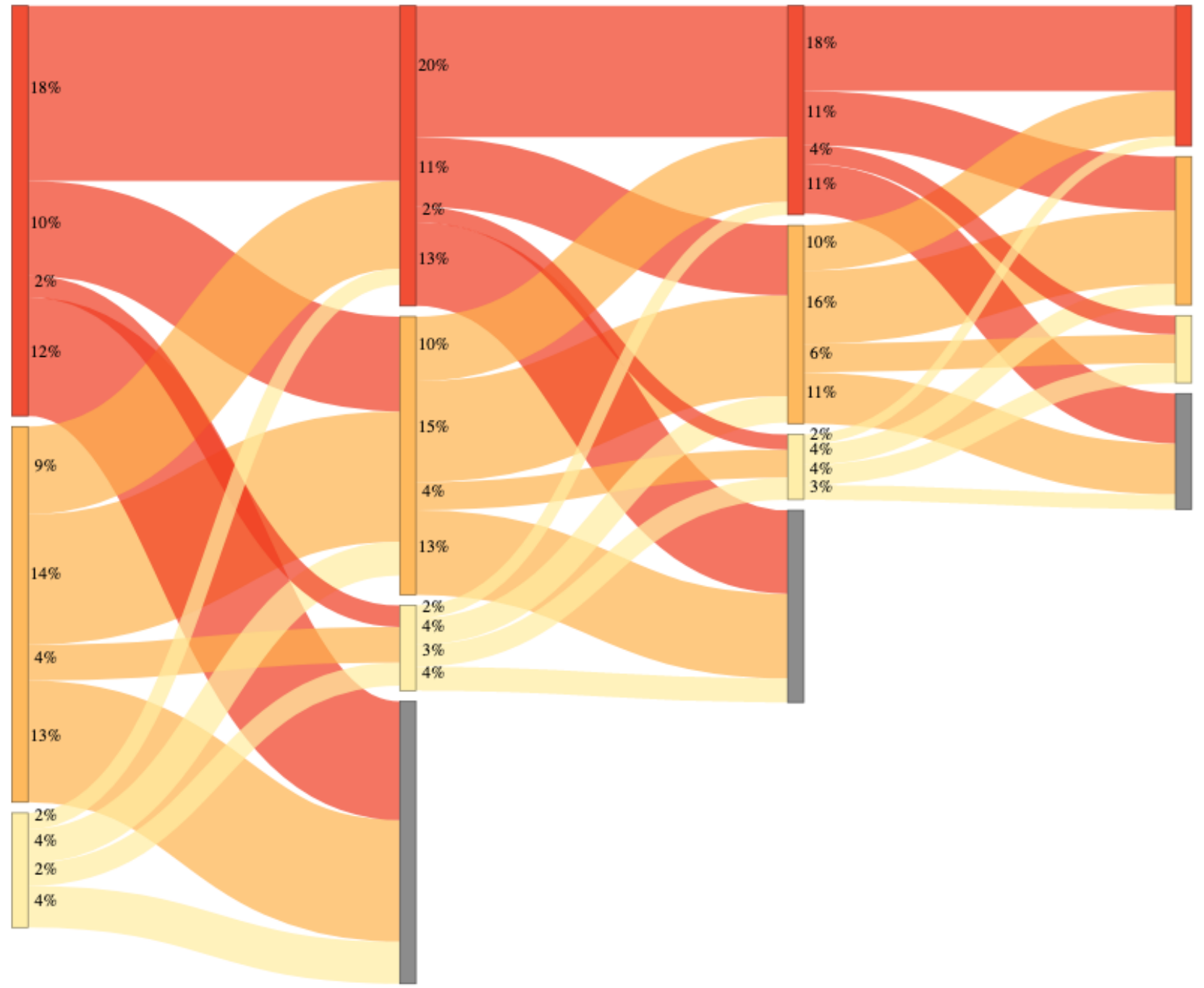
DEPRIVATION LEVEL OF LAST ADDRESS



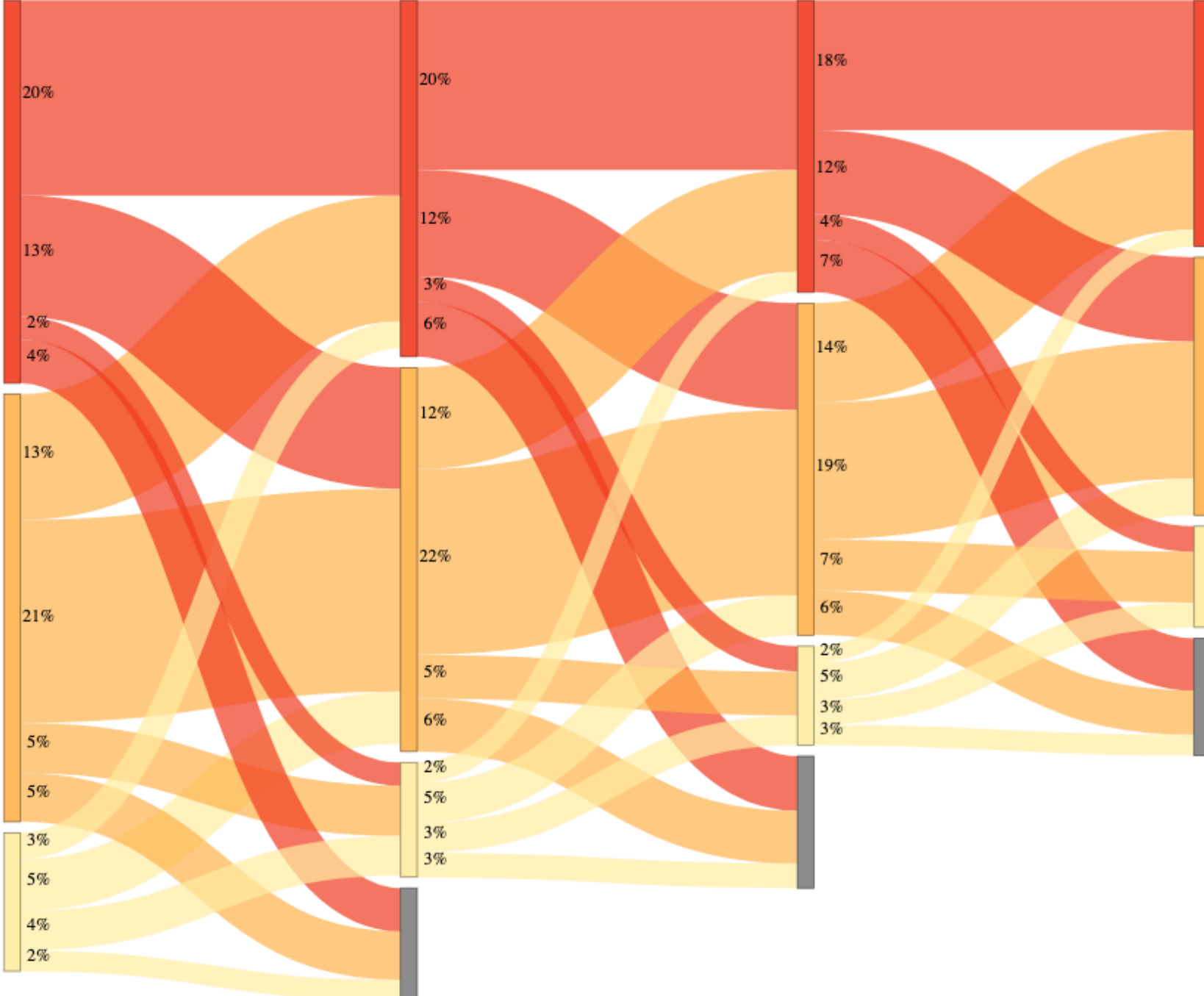
NUMBER OF MOVES



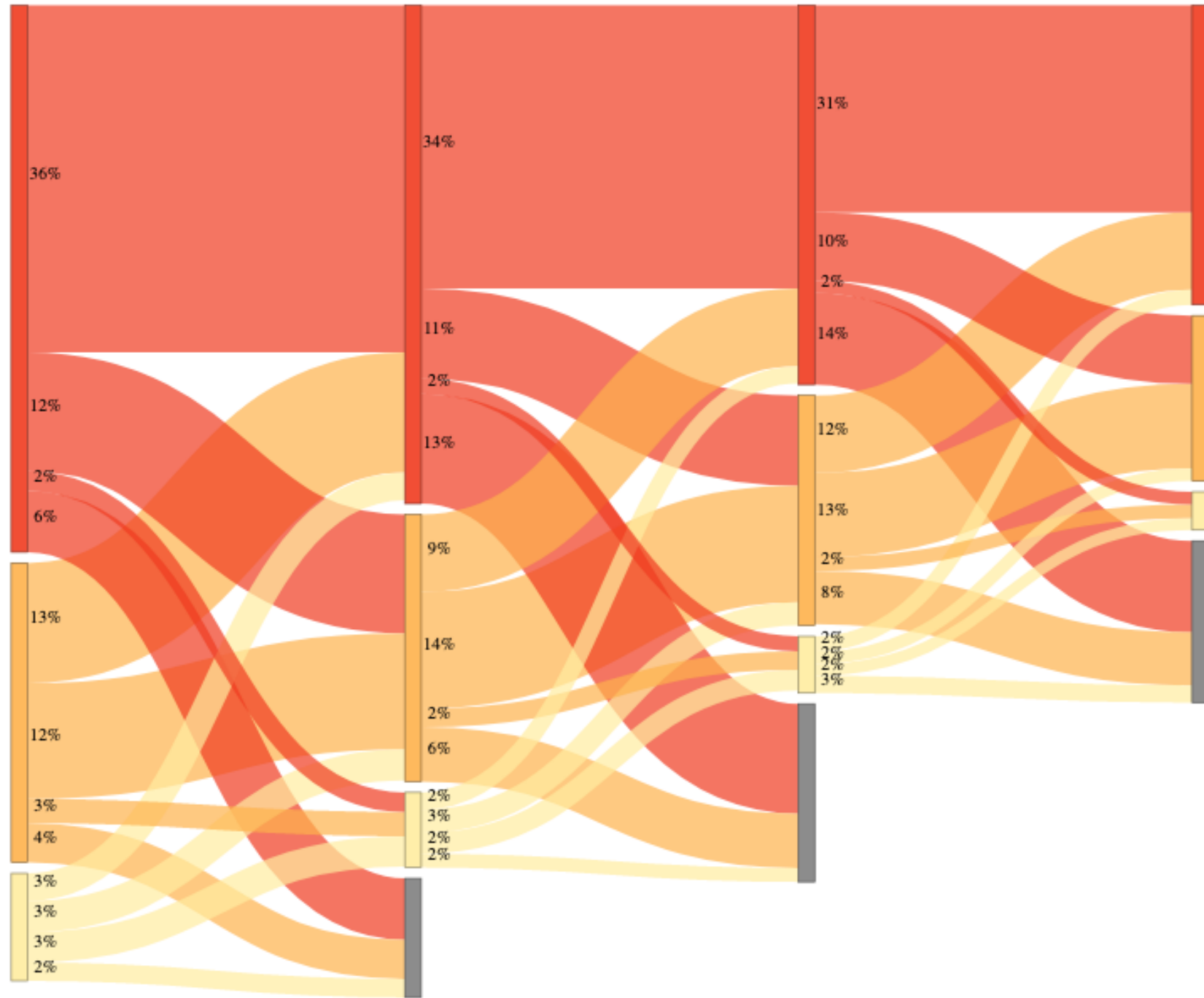
MOVEMENTS: ASYLUM



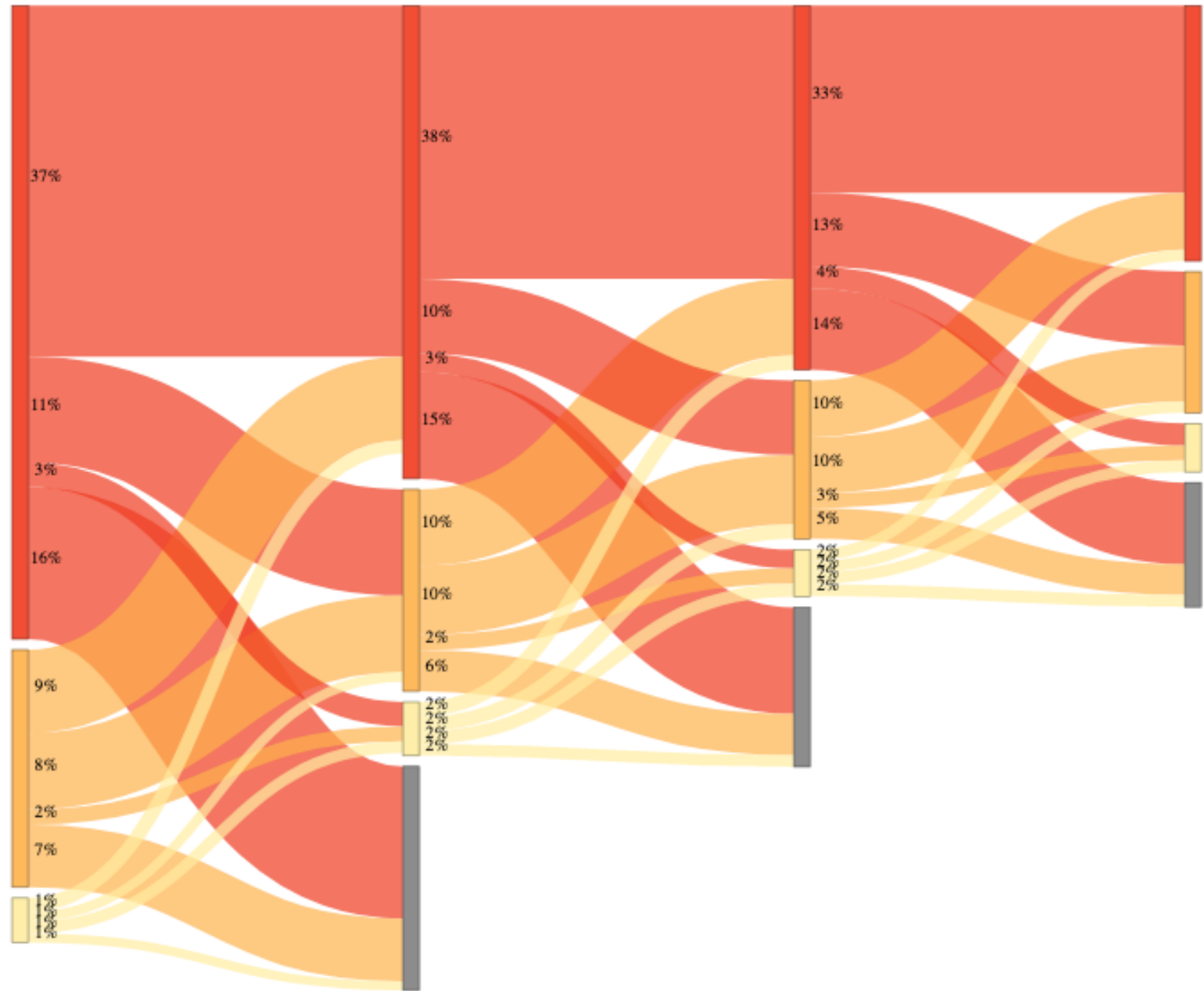
MOVEMENTS: CONVENTION



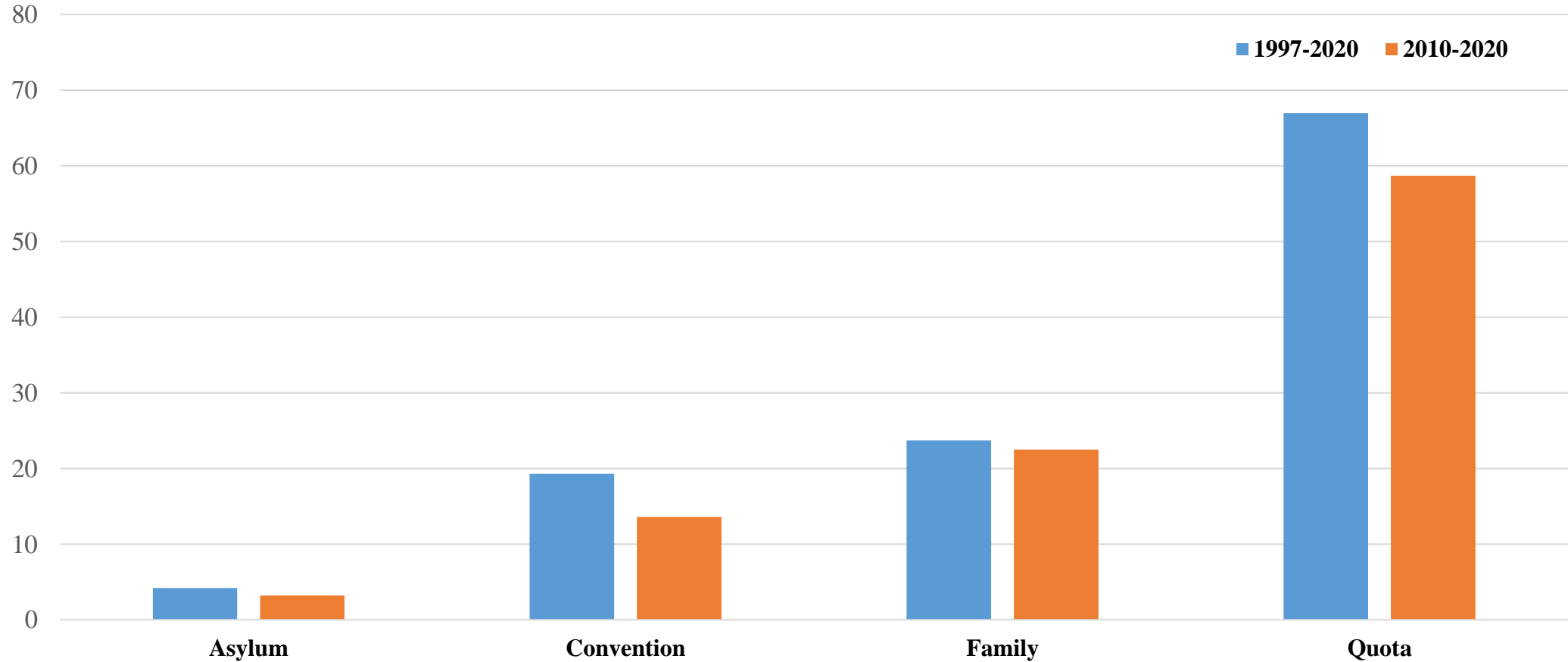
MOVEMENTS: FAMILY



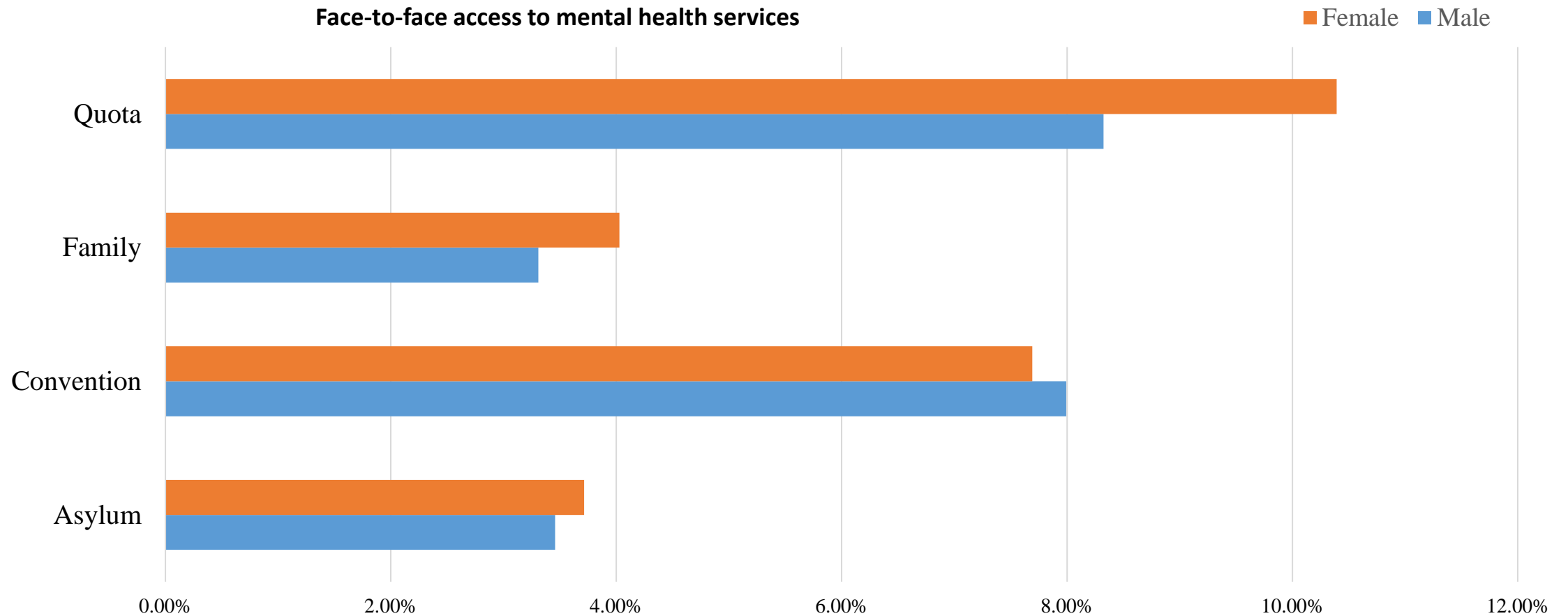
MOVEMENTS: QUOTA



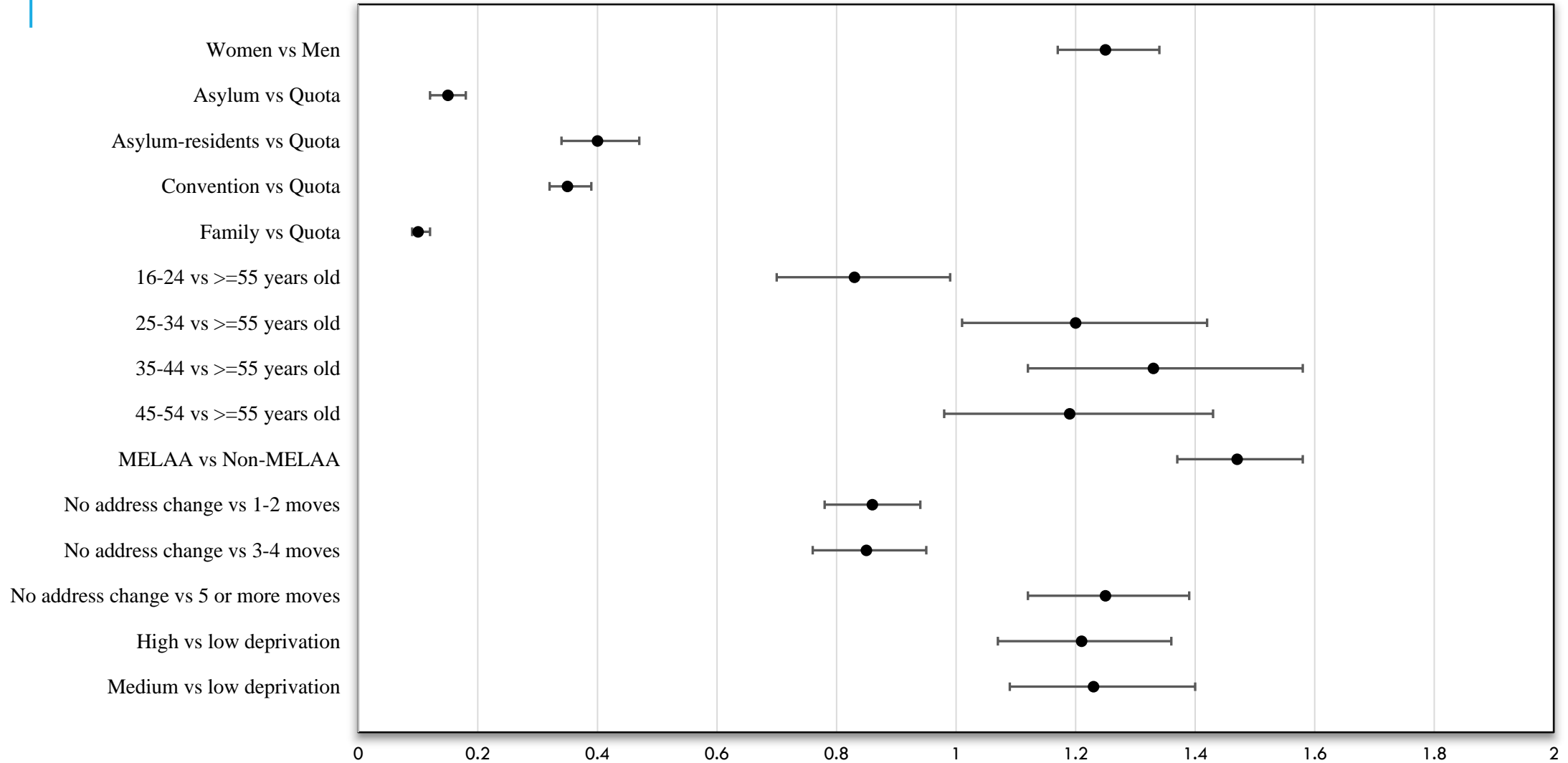
ACCESS TO PUBLIC/STATE HOUSING

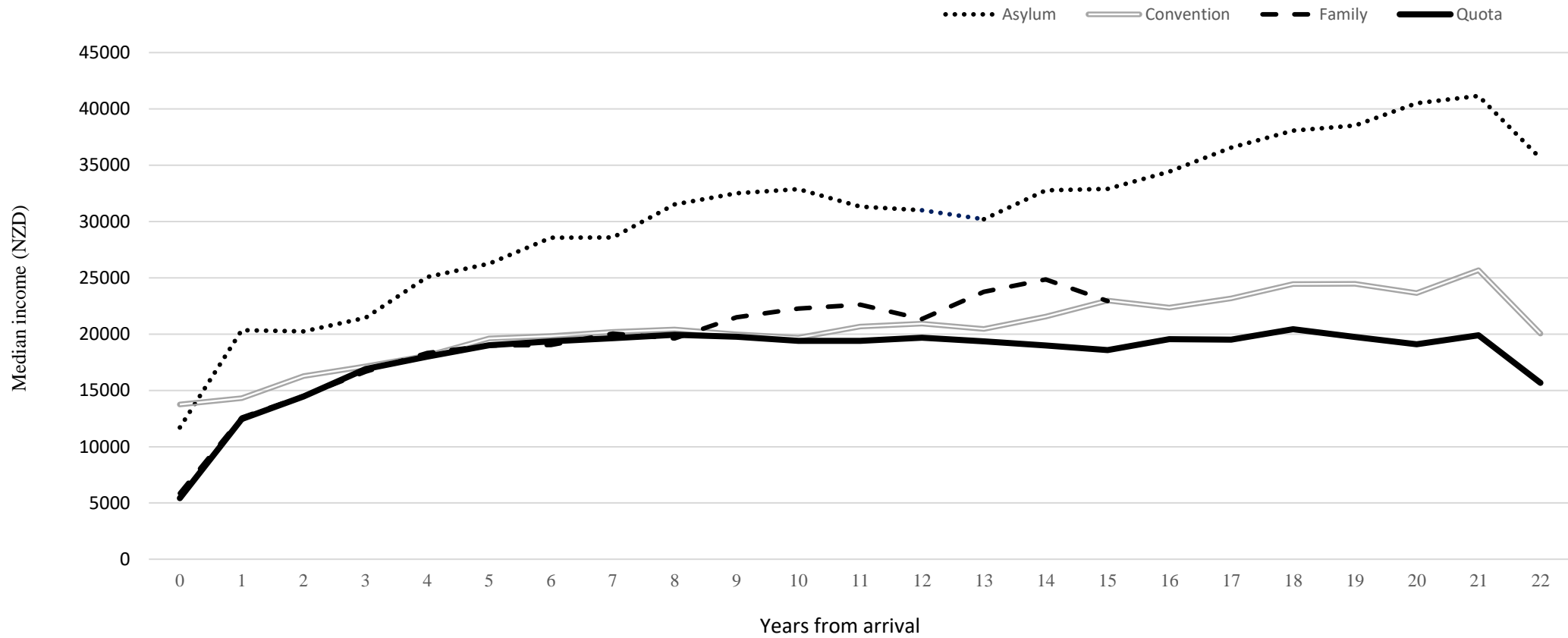


ACCESS TO SPECIALIST MENTAL HEALTH SERVICES (MID 2008-2019)



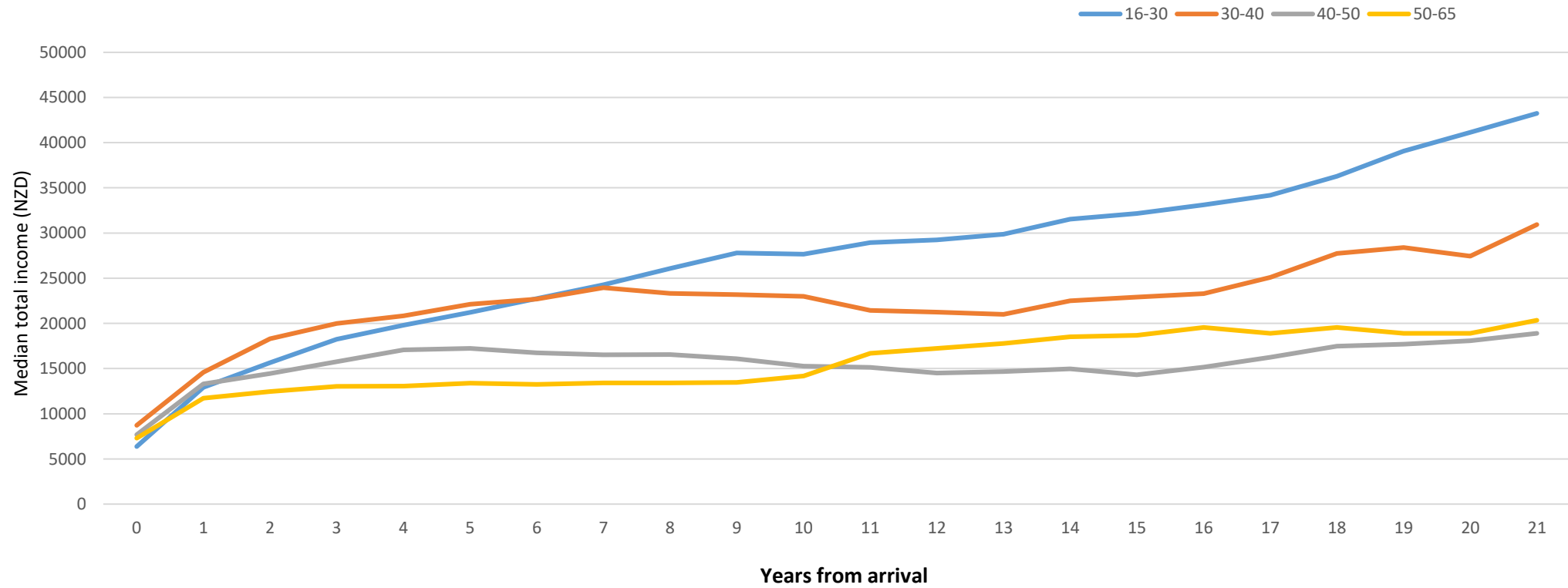
FACTORS AFFECTED EVER ACCESSING MENTAL HEALTH SPECIALIST SERVICES



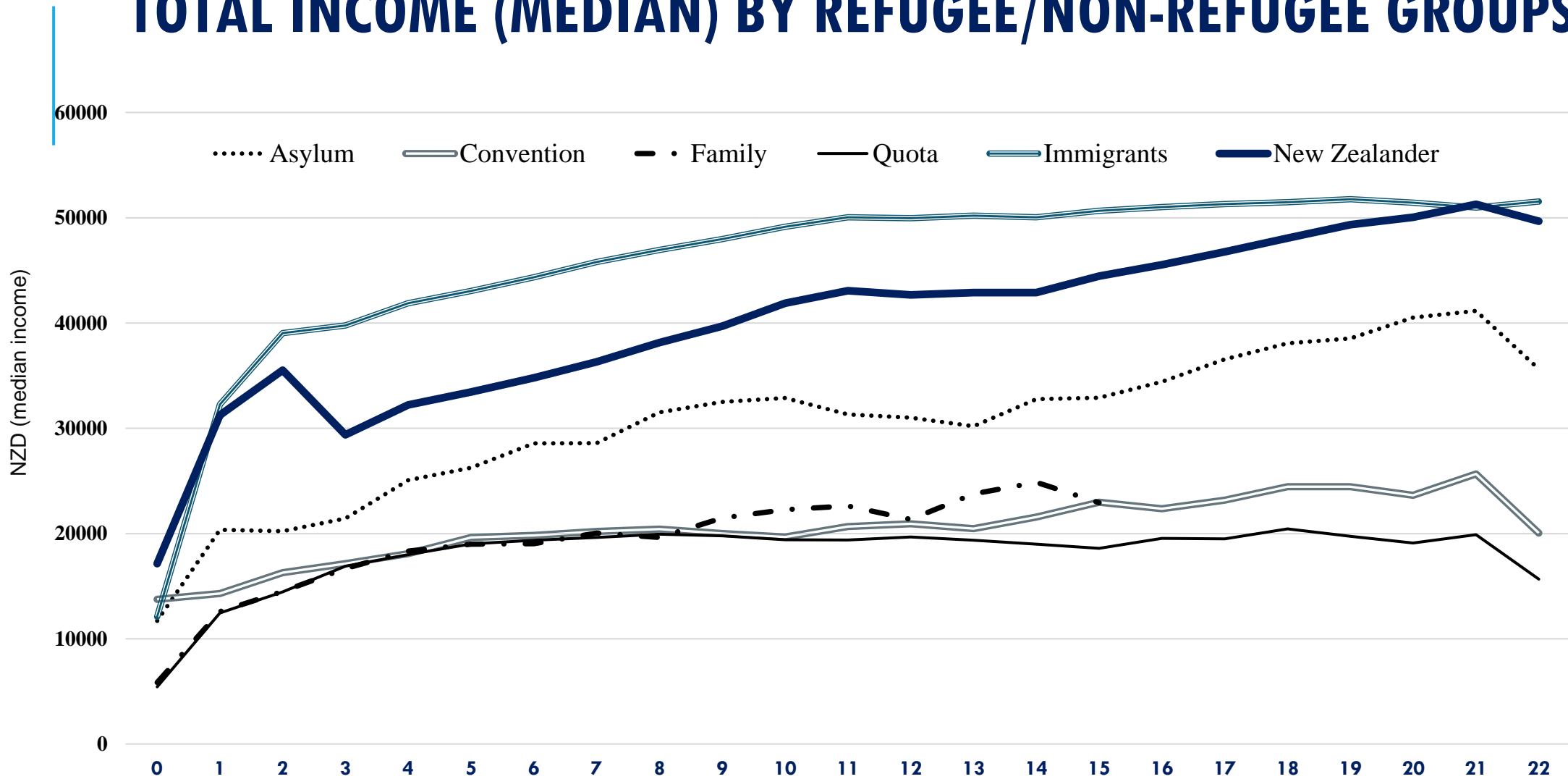


MEDIAN TOTAL INCOME FROM ARRIVAL

MEDIAN TOTAL INCOME BY AGE GROUP

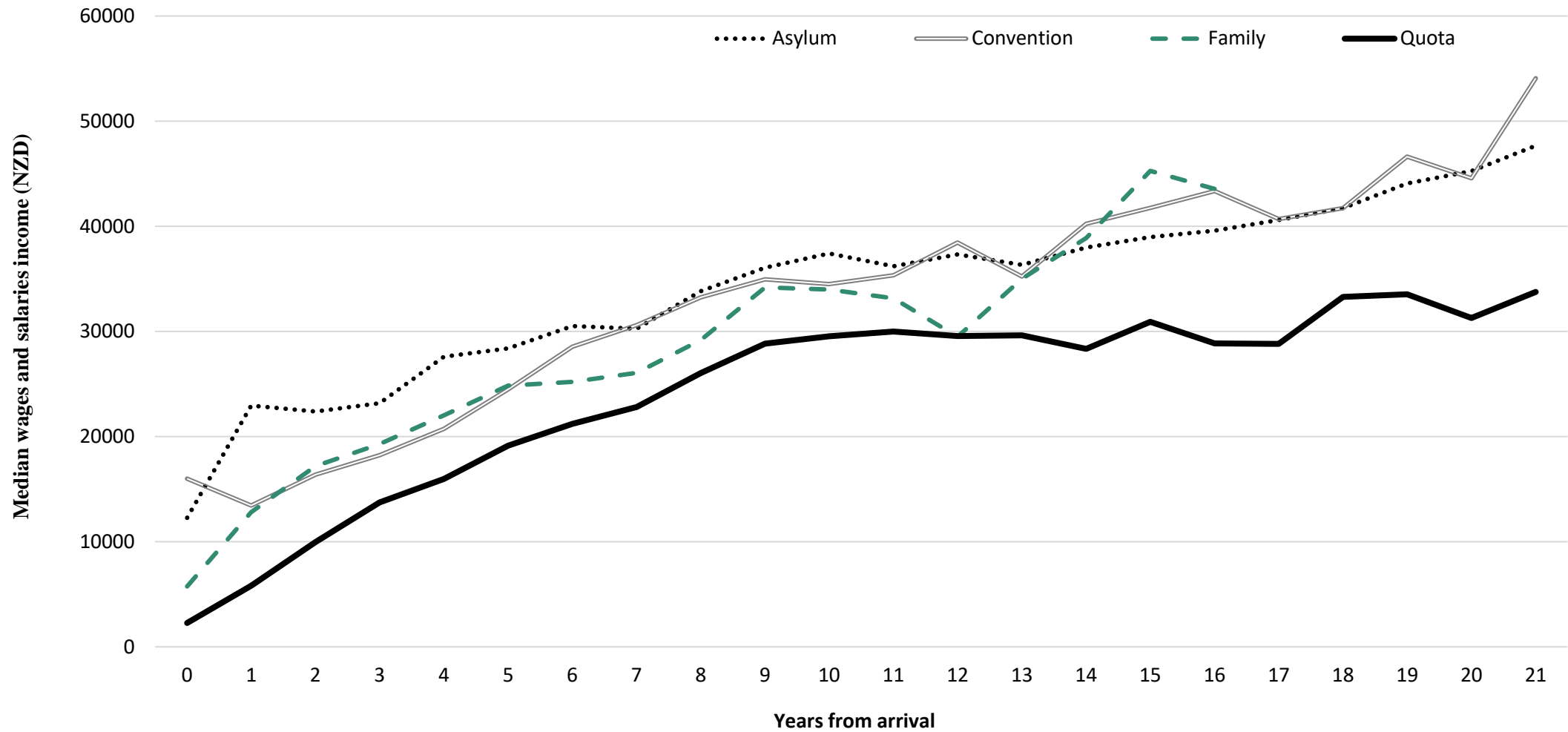


TOTAL INCOME (MEDIAN) BY REFUGEE/NON-REFUGEE GROUPS

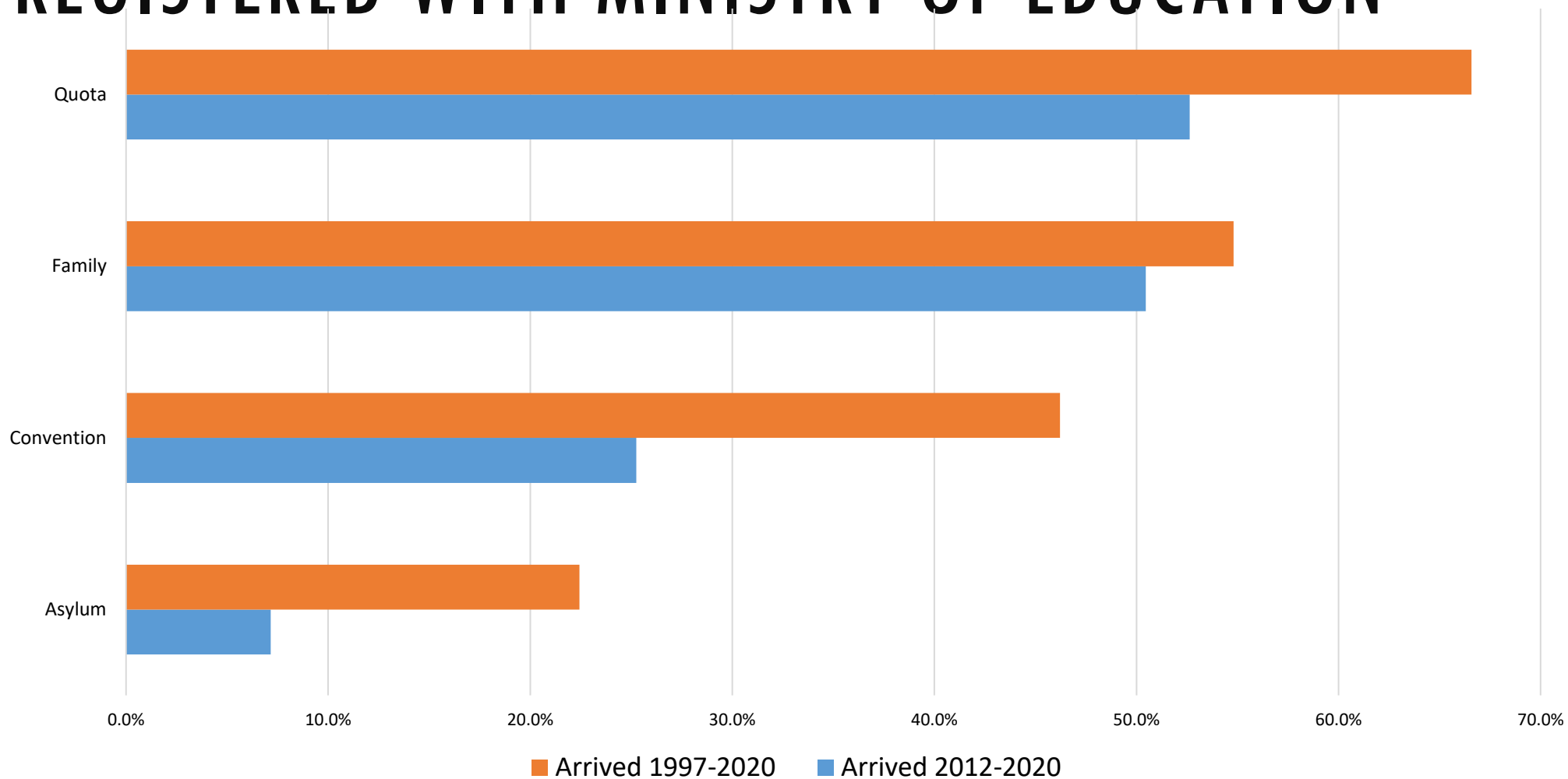


Years from arrival for refugees and immigrants and years from 1997 for New Zealanders

MEDIAN INCOME FROM WAGES AND SALARIES

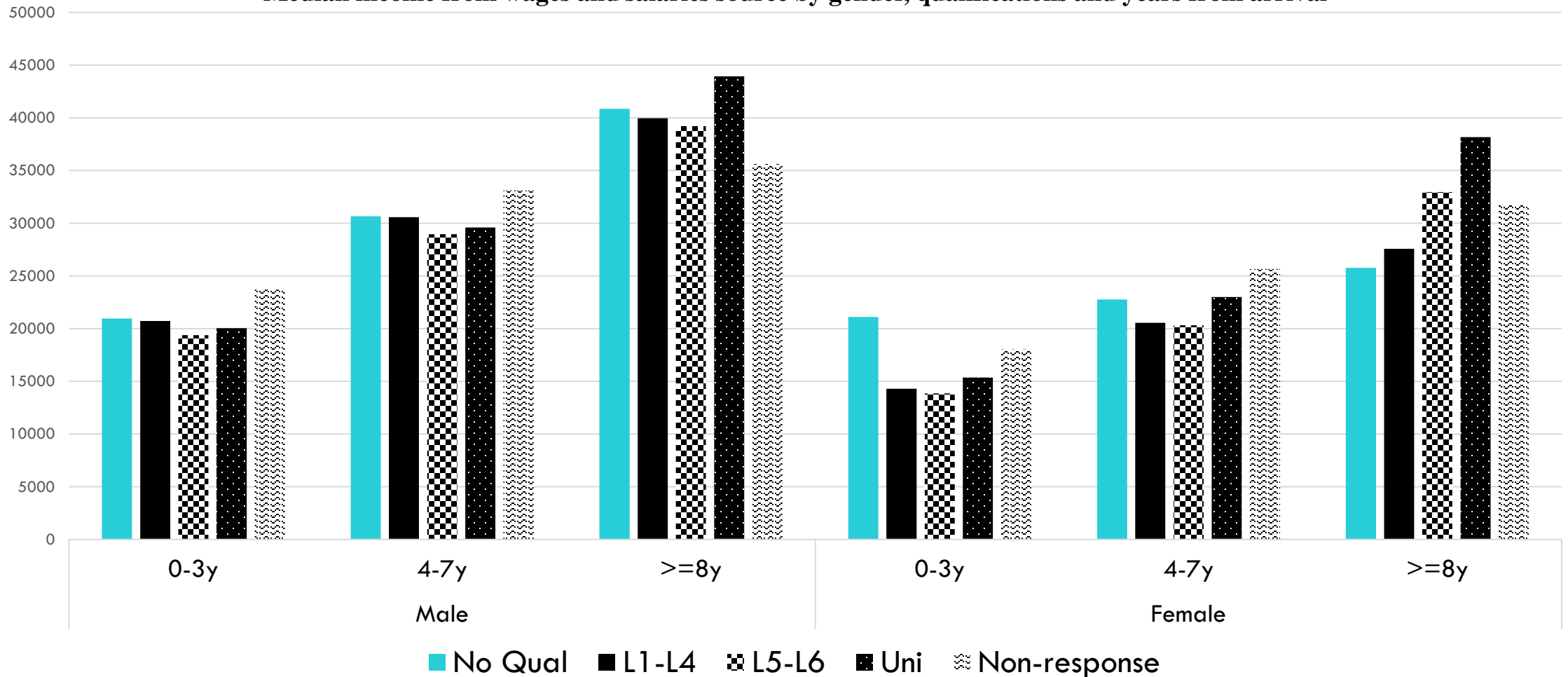


REGISTERED WITH MINISTRY OF EDUCATION

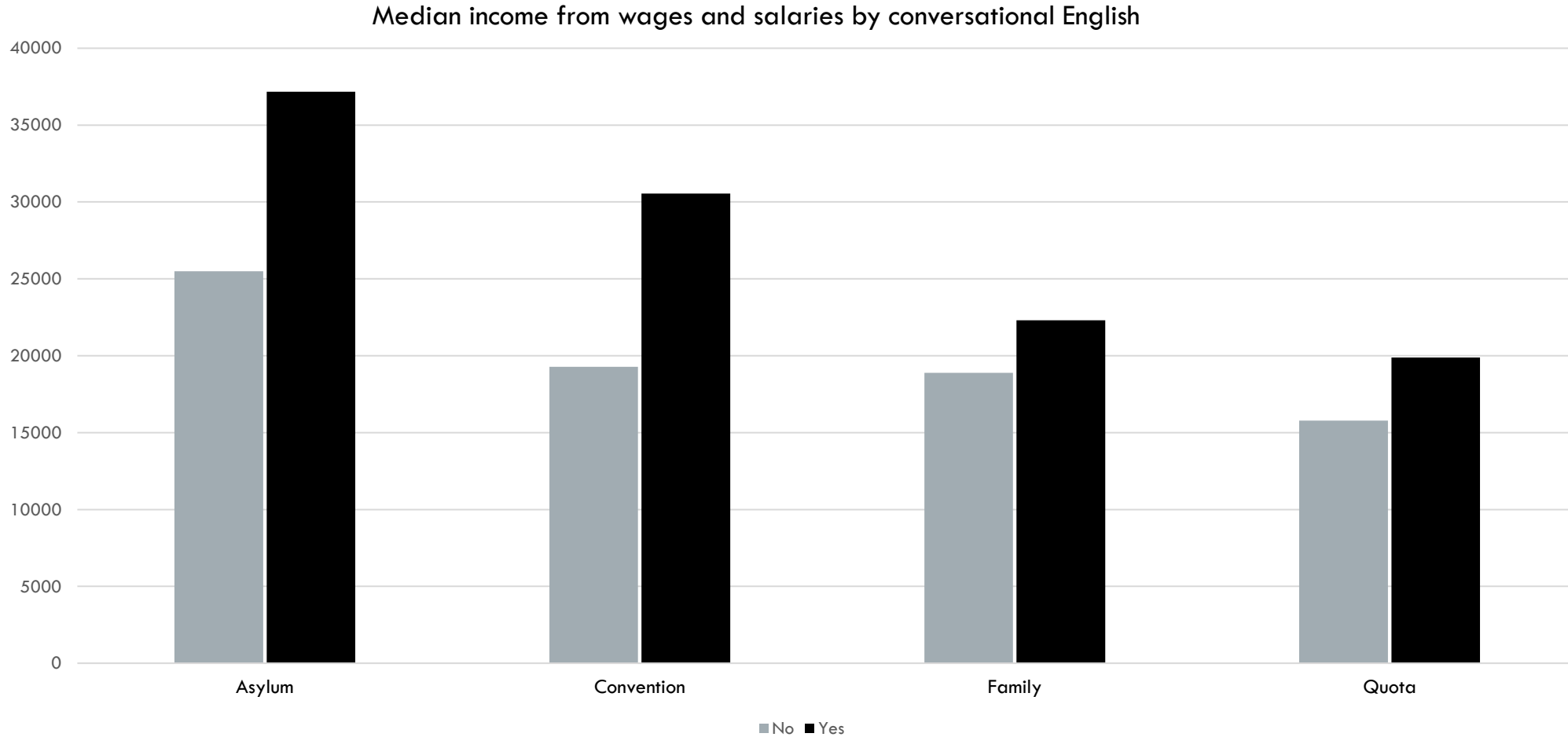


REFUGEES' INCOME BY GENDER, EDUCATION , YEARS ARRIVED

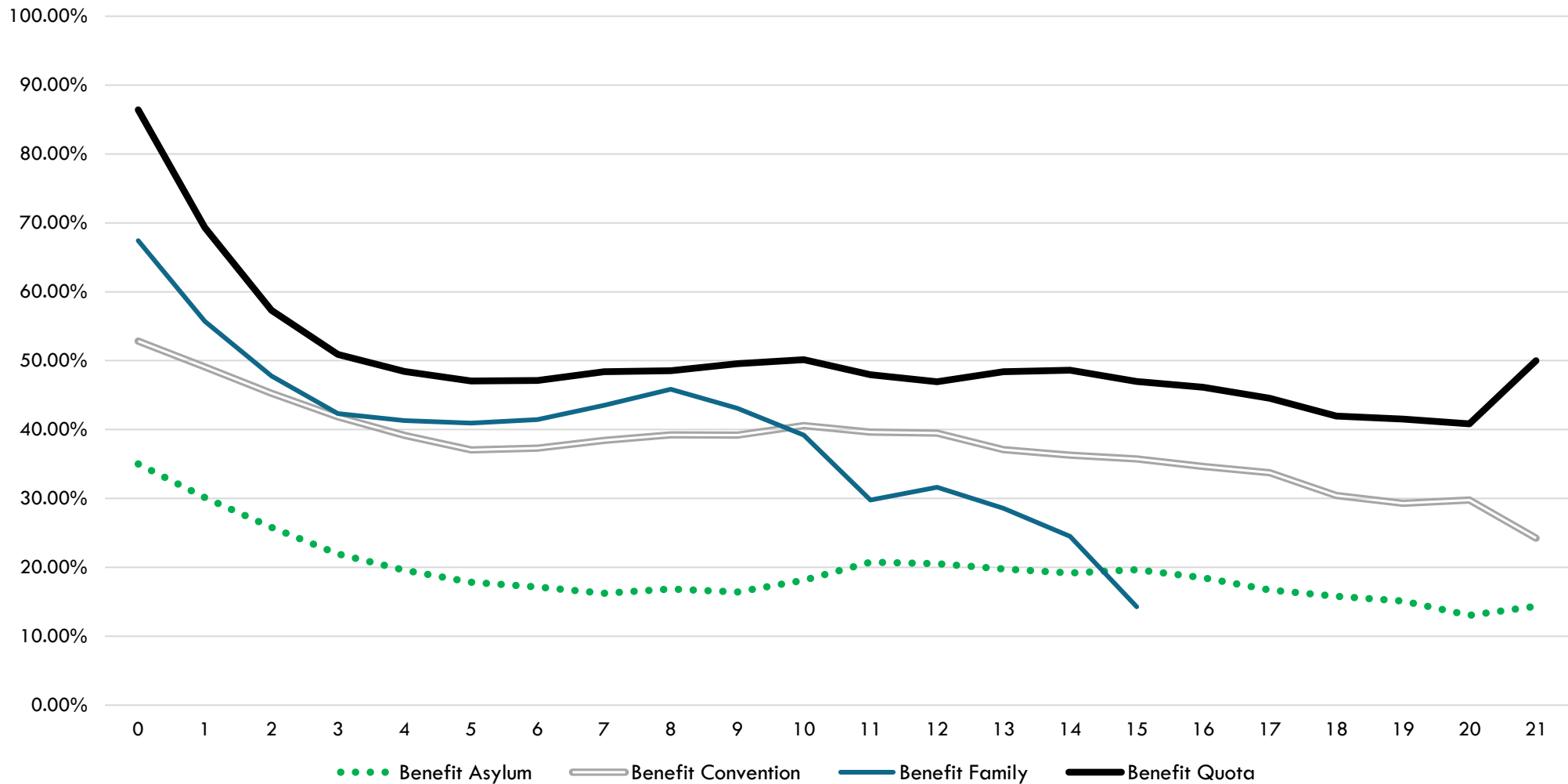
Median income from wages and salaries source by gender, qualifications and years from arrival



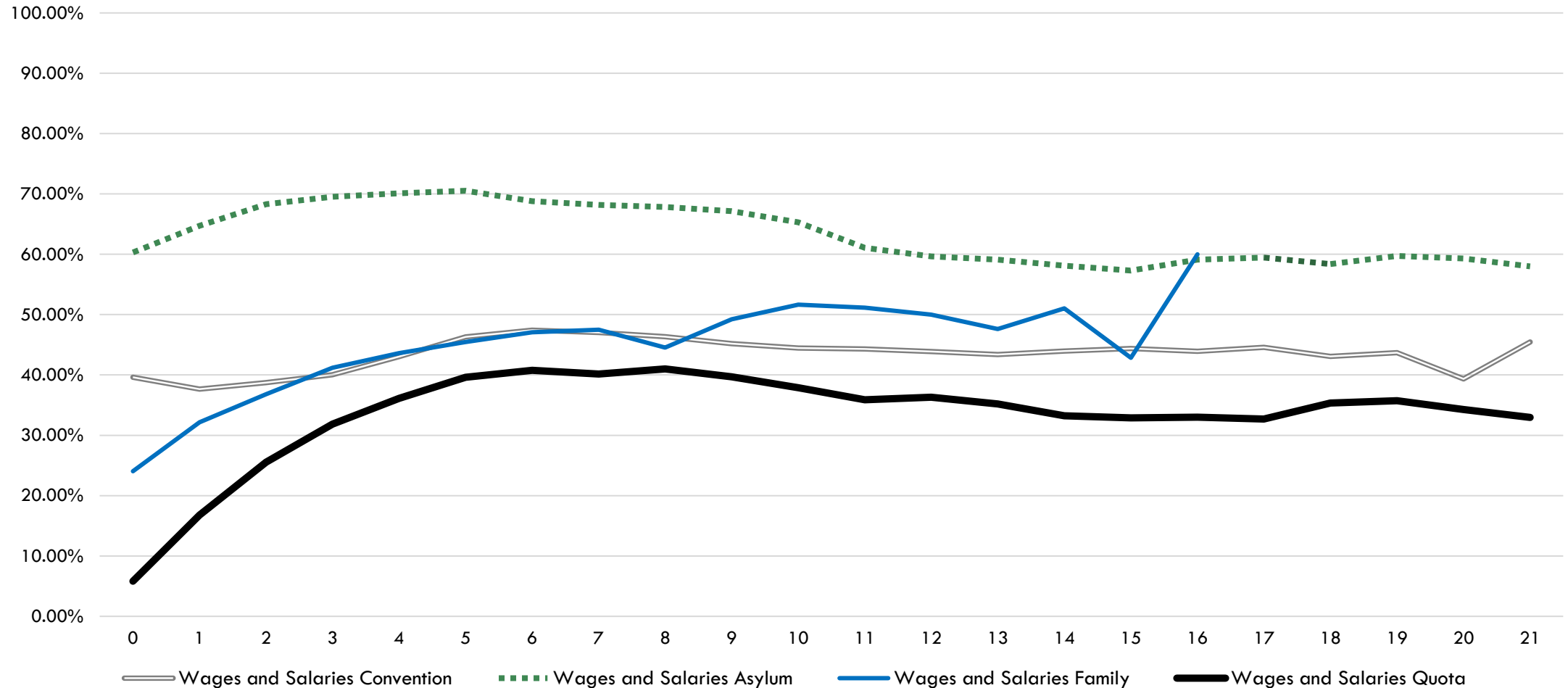
REFUGEES' WAGES AND SALARIES INCOME BY CONVERSATIONAL ENGLISH



REFUGEES' MAIN SOURCE OF INCOME FROM BENEFIT

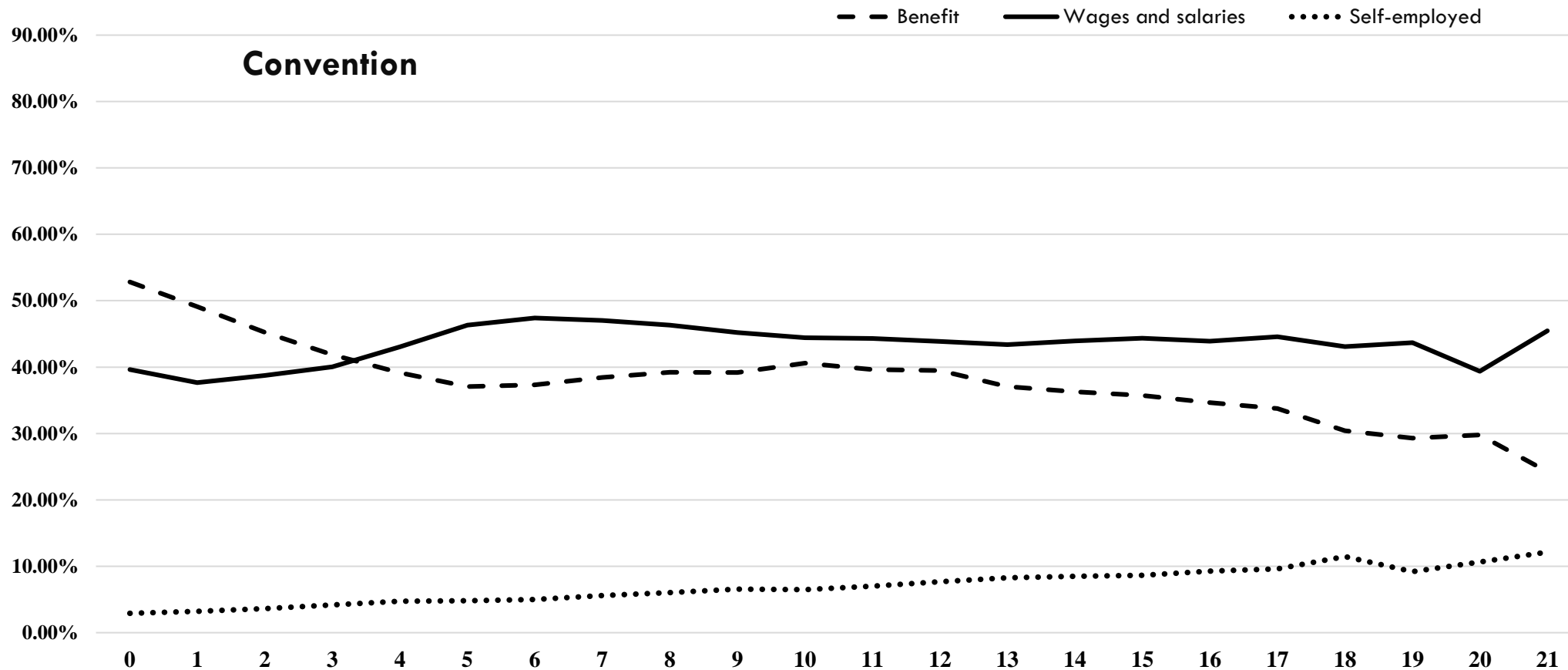


REFUGEES' MAIN SOURCE OF INCOME FROM WAGES AND SALARIES



REFUGEES' MAIN SOURCE OF INCOME

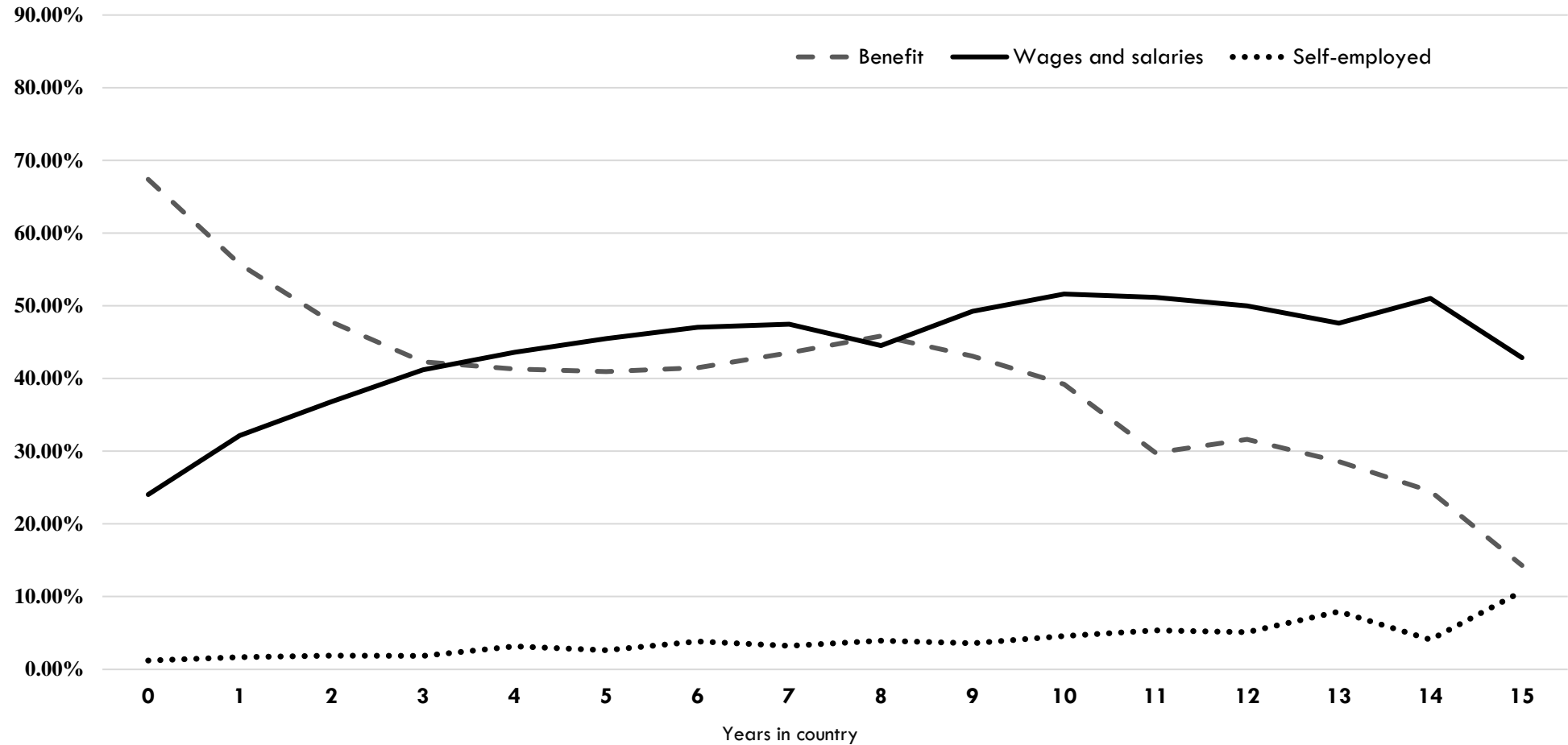
- CONVENTION



REFUGEES' MAIN SOURCE OF INCOME

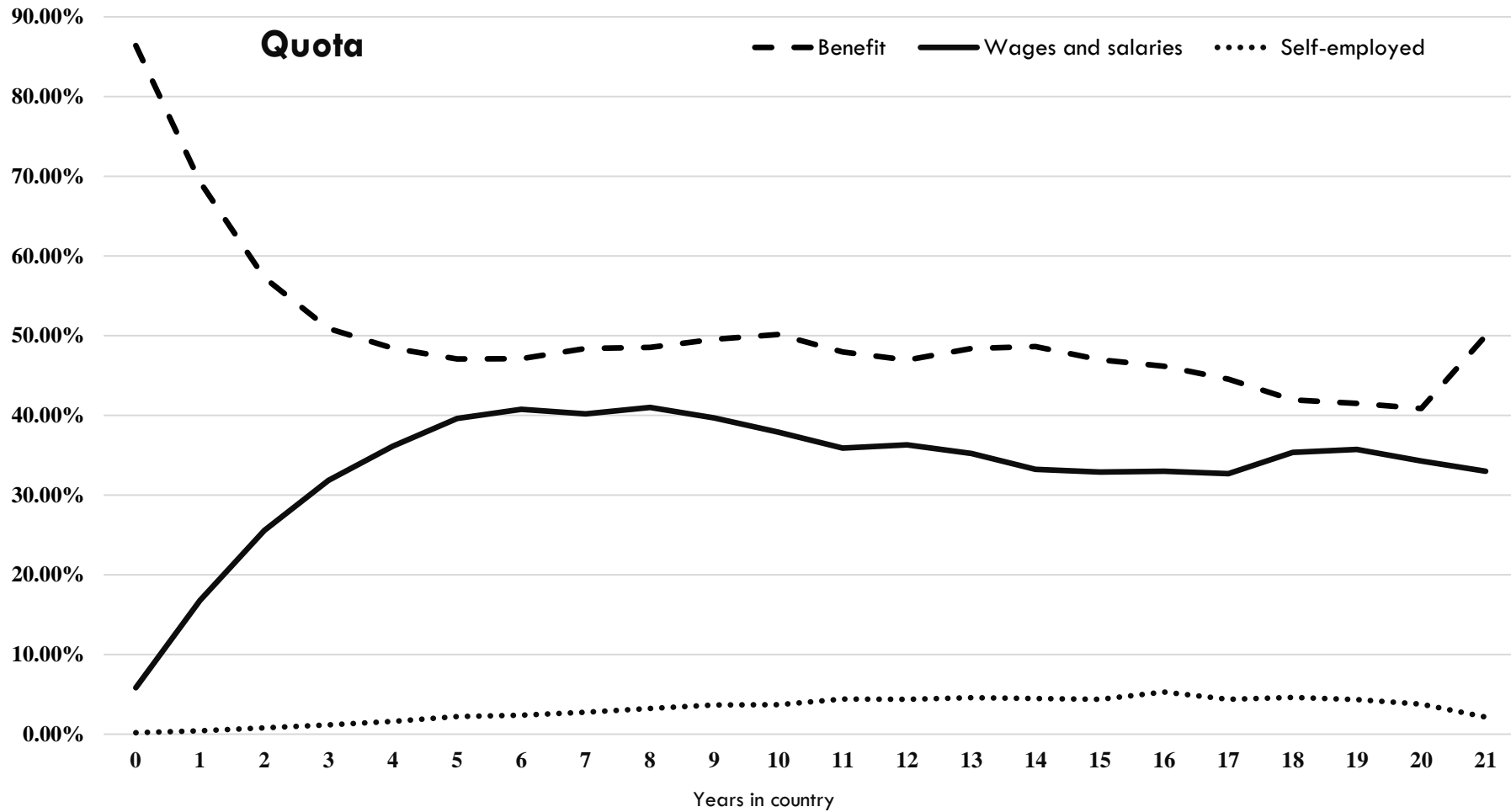
- FAMILY

Family Reunification



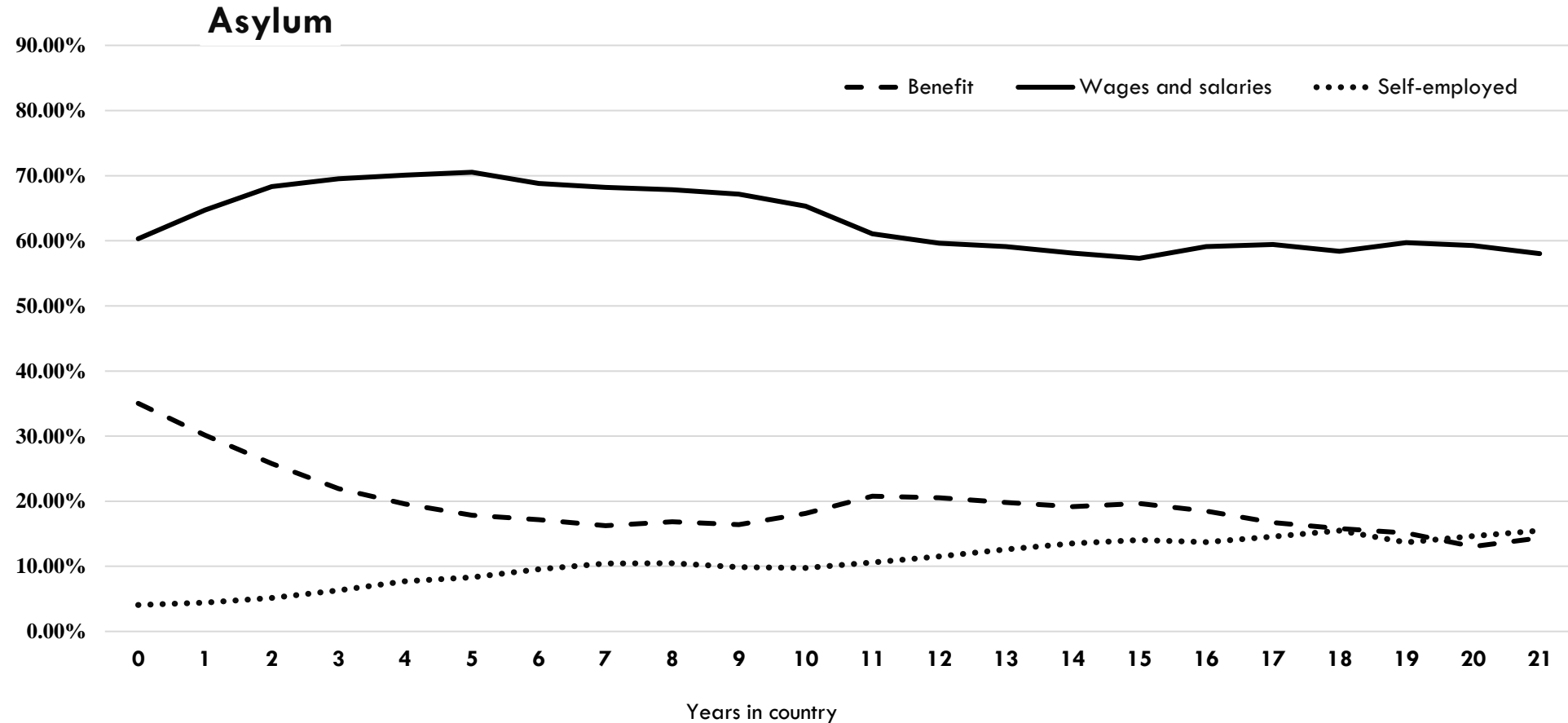
REFUGEES' MAIN SOURCE OF INCOME

- QUOTA

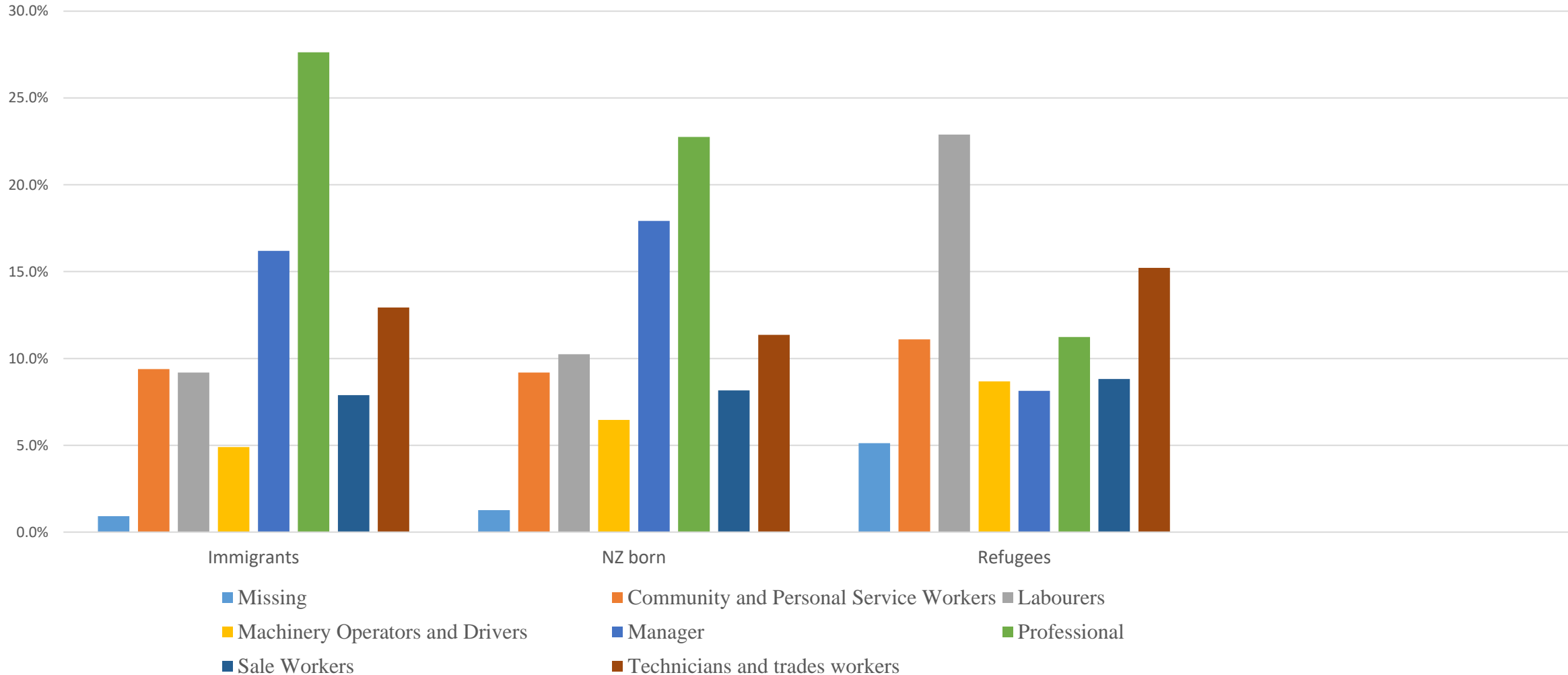


REFUGEES' MAIN SOURCE OF INCOME

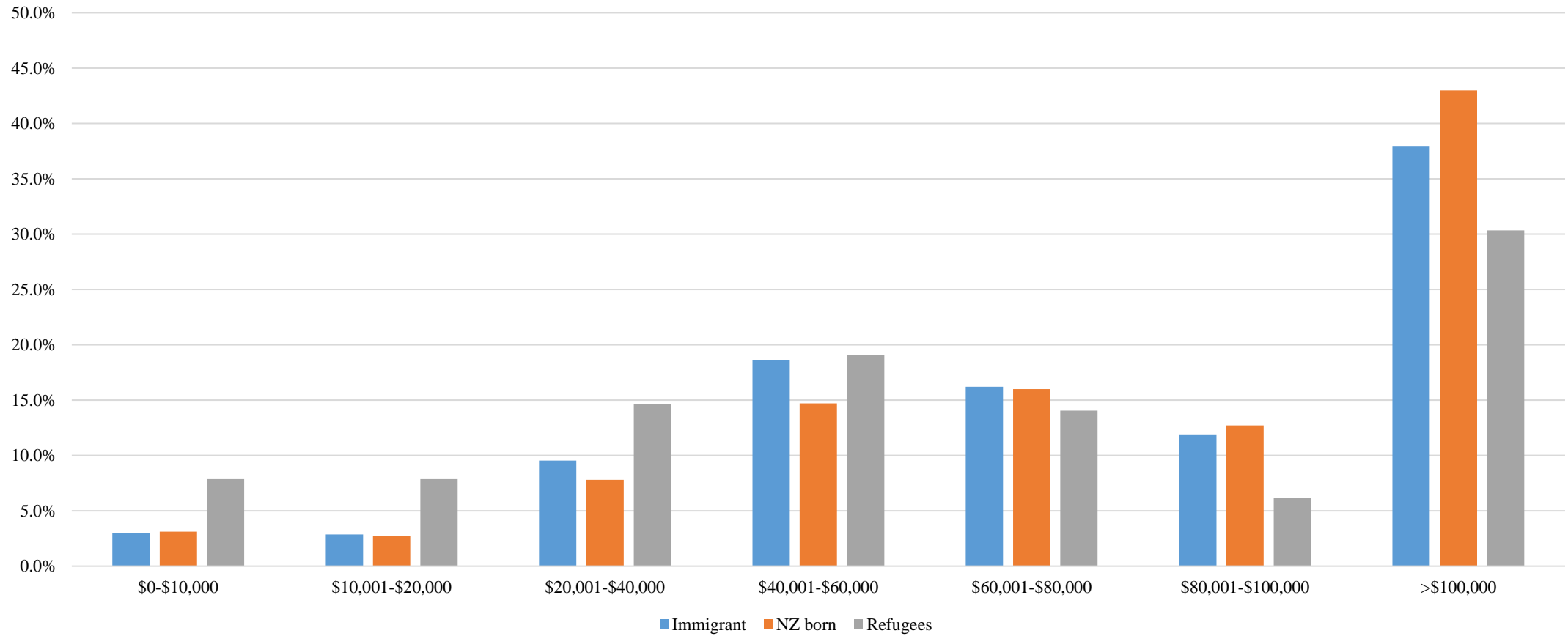
ASYLUM



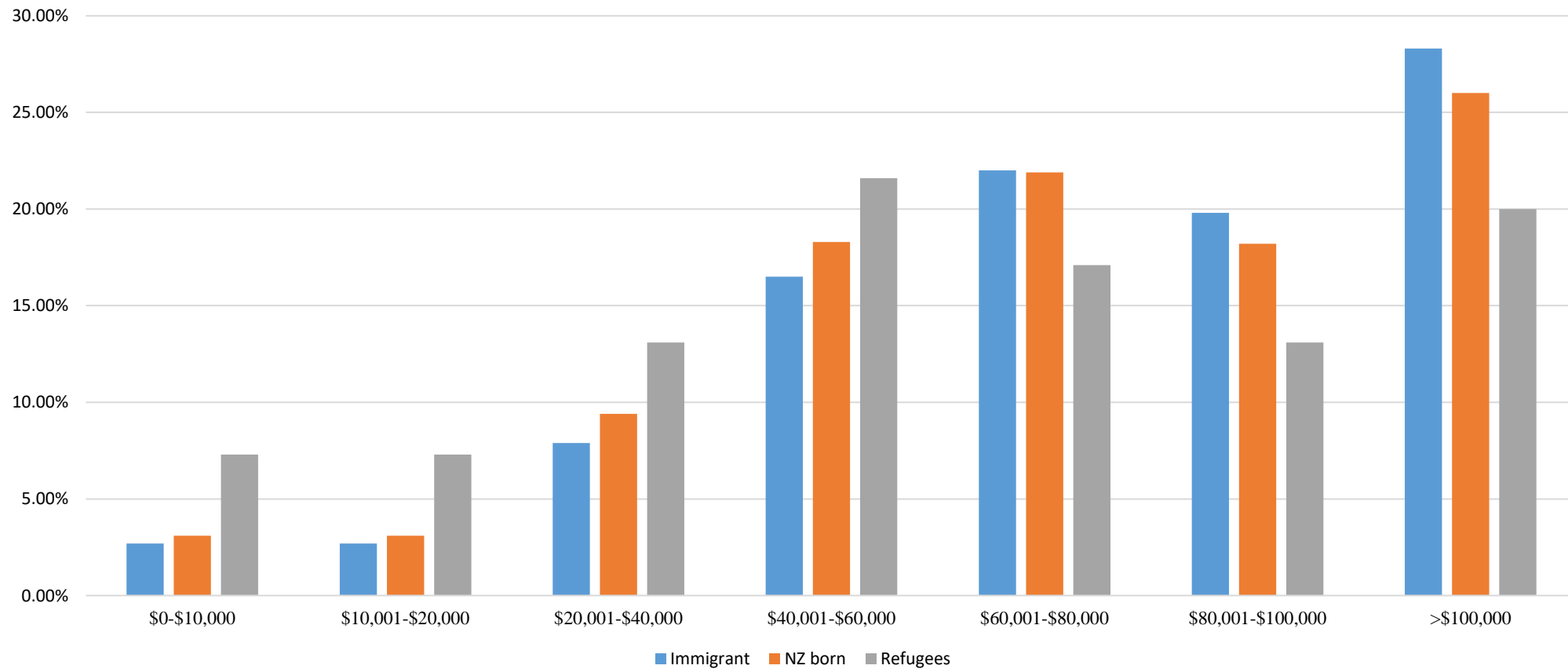
MAJOR JOB CATEGORIES OF REFUGEES/NON-REFUGEES



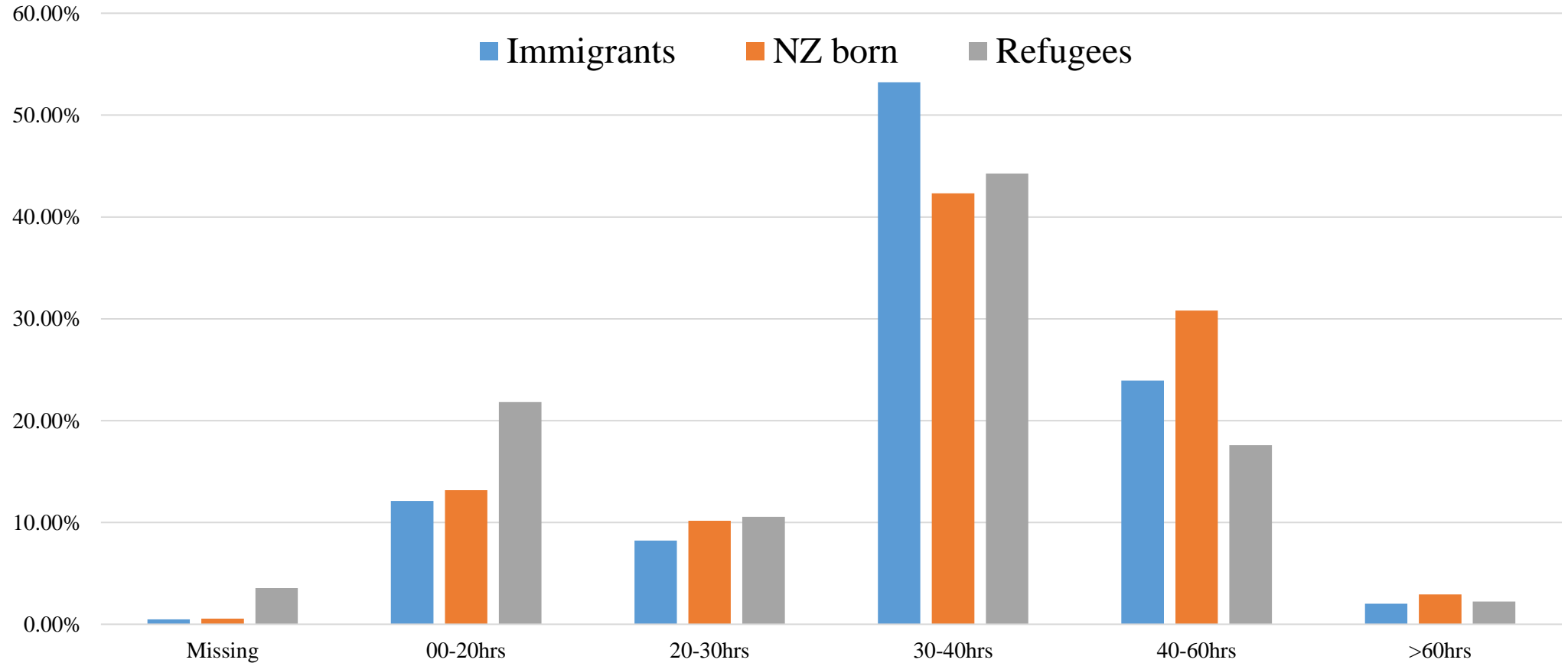
WAGES AND SALARY FOR MANAGERIAL ROLES BY POPULATION SUB-GROUP



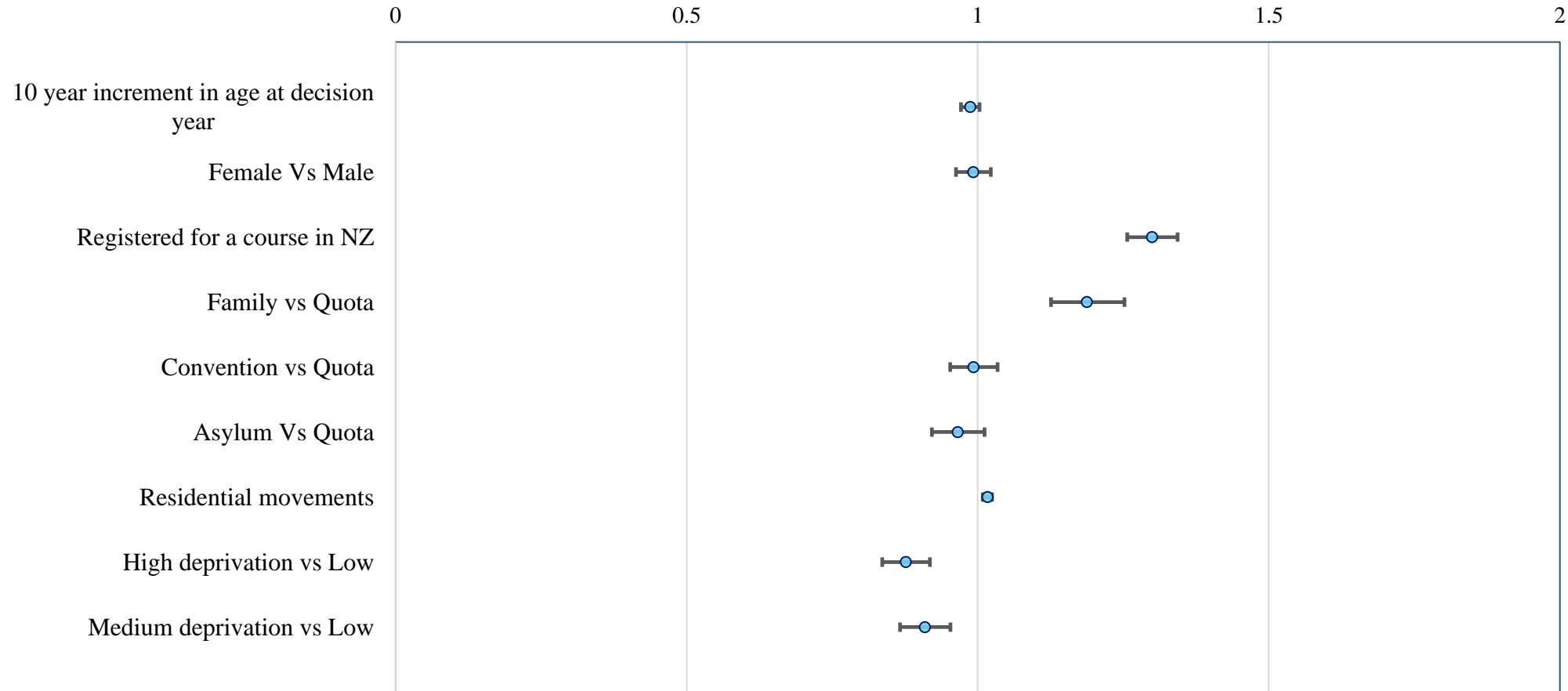
WAGES AND SALARIES OF PROFESSIONALS BY POPULATION SUB-GROUP



HOURS WORKED PER WEEK



FACTORS IMPACTING LENGTH OF EMPLOYMENT (CONTROLLED BY YEARS IN NZ)



IN SUMMARY

- ❖ Refugee sub-groups are substantially different.
- ❖ Resettlement journeys vary in terms of income, employment, mobility, and education.
- ❖ Overall, for those who are in work, there are income improvements but mainly in the first 4–5 years, only slight improvements afterwards.
- ❖ There is an income gap between refugees and the general population, even after 15 years.
- ❖ Much to learn from administrative data, more to learn from real voices.

What are the policy implication of these results ?

ACKNOWLEDGEMENT

RUTHERFORD
FOUNDATION

ROYAL
SOCIETY
TE APĀRANGI

PROF JAY MARLOWE; RUTHERFORD DISCOVERY FELLOWSHIP

AUCKLAND MEDICAL RESEARCH FOUNDATION (AMRF)

IMMIGRATION NZ RESEARCH ANALYST TEAM; Anne-Marie Masgoret and Andrew Hoy

COMPASS TEAM: Associate prof Barry Milne, Jessica McLay, and other datalab team members

Refugees Advisory Group: Susan Elliot, Deborah Manning, Annette Mortenson, Timothy Fadgen, Seinín O' Conner, Abban, Bernard Sama, and Janine Paynter

Associate Prof Dan Exeter, Annie Chiang And Jessica Colbert: Mobility study



Auckland Medical
Research Foundation
est. 1955



Thank You!

Any Questions?



