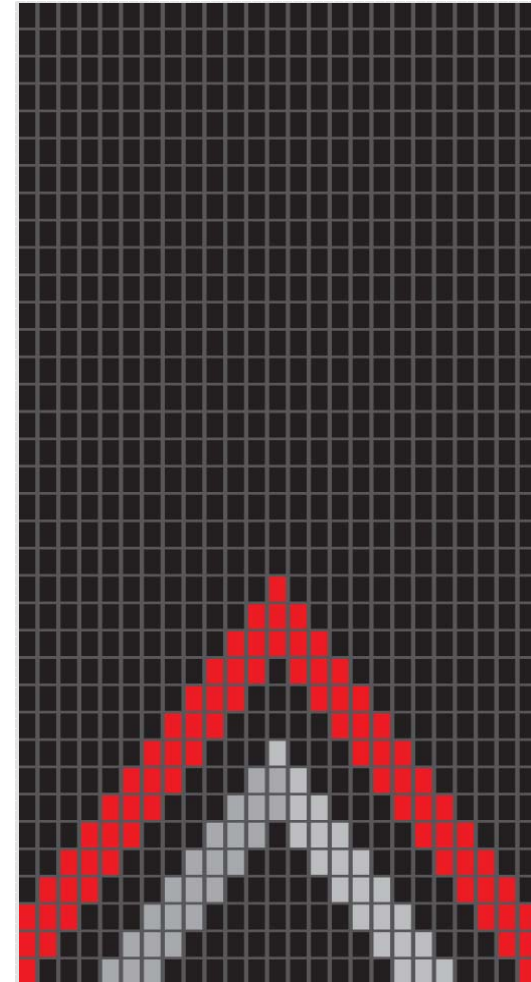


Data, Development and Sovereignty

Andrew Sporle - on behalf of Te Mana Raraunga



**Indigenous
Data
Sovereignty is
supported by
International
Policy**

**2007 UN Declaration on the Rights of
Indigenous Peoples – Article 15**

“Indigenous peoples have the right to the dignity and diversity of their cultures, traditions, histories and aspirations which shall be appropriately reflected in education and public information”

**2008 WHO’s Commission on the Social
Determinants of Health**

a ‘Minimum Health Equity Surveillance System’. As part of the system, ‘good-quality data on the health of Indigenous Peoples should be available, where applicable’.

**Indigenous
Data
Sovereignty is
already
happening
internationally**

**International Group
for Indigenous
Health
Measurement
- since 2005**

United Nations

- Dept of Economic and Social Affairs
- Special Rapporteur on the rights of Indigenous peoples
- Permanent Forum on Indigenous Issues

**ASSA
International
Workshop
Canberra 2015**

**Native American and
Indigenous Studies
Association 2016 conf**

Cree Nation - OCAP[©]

- Ownership
- Control
- Access
- Possession

OCAP[®] –
native control
since 1998

<http://fnigc.ca/ocap.html>

**Meanwhile, in
Aotearoa
Data
Sovereignty is
already a
significant
issue**

**Iwi wanting access
to and possession of
data for their own
development (OIA,
Treaty claims and
now IDI)**

**Regional health data
sharing agreement
includes data
sovereignty**

**Treasury /
SNZ hui**





**Iwi chairs
forum hui**

**Independent
Maori
Statutory
Board appoint
Data Strategy
Expert Panel**



**Te Mana
Raraunga**

Maori measurement frameworks

WHĀNAU RANGATĪRATANGA PRINCIPLES					
	WHAKAPAPA Thriving relationships	MANAAKITANGA Reciprocity & support	RANGATĪRATANGA Leadership & participation	KOTAHITANGA Collective unity	WĀIRUATANGA Spiritual & cultural strength (Distinctive Identity)
CAPABILITY DIMENSIONS  SUSTAINABILITY OF TE AO MĀORI (language, identity, culture, institutions)	Whānau have a positive relationship with Te Ao Māori	Whānau are able to foster and develop their connections to Te Ao Māori	Whānau exercise leadership in Te Ao Māori	Whānau are able to meaningfully engage with Māori culture and Māori institutions	Whānau can access and express their culture and identity in ways that are meaningful to them
 SOCIAL CAPABILITY (trust, volunteering, connectedness)	Whānau are connected and safe	Whānau care for themselves and for others	Whānau exercise leadership in Te Ao Whānui	Whānau are able to access and trust institutions	Whānau are able to express and embrace spirituality
 HUMAN RESOURCE POTENTIAL (health, education, quality of life)	Whānau wellbeing is enhanced	Whānau support each other to succeed	Whānau are able to live well	Whānau are able to achieve their aspirational goals	Whānau are resilient and able to overcome adversity
 ECONOMIC (employment, wealth, housing)	Whānau can manage and leverage collective resources	Whānau are able to support each other financially and to accumulate financial reserves	Whānau enjoy economic security	Whānau can navigate barriers to success	Whānau can access their material and non-material resources

Data is a highly valuable strategic asset for Maori development

In the age of Big-Data, Maori want

- **access to data** to support our decision-making
- **to be involved** when big-data is used to **make decisions** about us
- **Indigenous Data Sovereignty** states that data is subject to the laws of the nation from which it is collected (incl Tribal nations)
- **Maori Data Sovereignty** recognizes that Maori data should be subject to Maori governance.
- Maori Data Sovereignty supports **iwi sovereignty** and the realisation of iwi aspirations.

What is Māori Data? (depends who you ask but)

Context and kaupapa is important

Data from Māori

- From Maori organisations and businesses
- Cultural or commercial significance

Data about Māori

- Used to describe or compare Māori collectives
- Cultural or commercial relevance
- Individuals?

Data about Māori resources

- Emerges from research on Maori resources
- Cultural or commercial interest

Issues with Linked Data for Maori

Require
ancestry
and iwi
information

Availability of
Maori-defined
measures

Deficit or
development
measures /
approaches

Census link can provide these
BUT:

- Census participation varies by ethnicity, gender and age
- Matching not complete
?similar variation
- Iwi list not comprehensive
- Iwi data quality ?

PRECISION – more
important for smaller
populations



Whānau Categories from Te Kupenga

Which group or groups include those you were thinking about as your whānau? You can select as many as you need.

A. Parents, partner/spouse, brothers and sisters, brothers/sisters/parents in-law, children

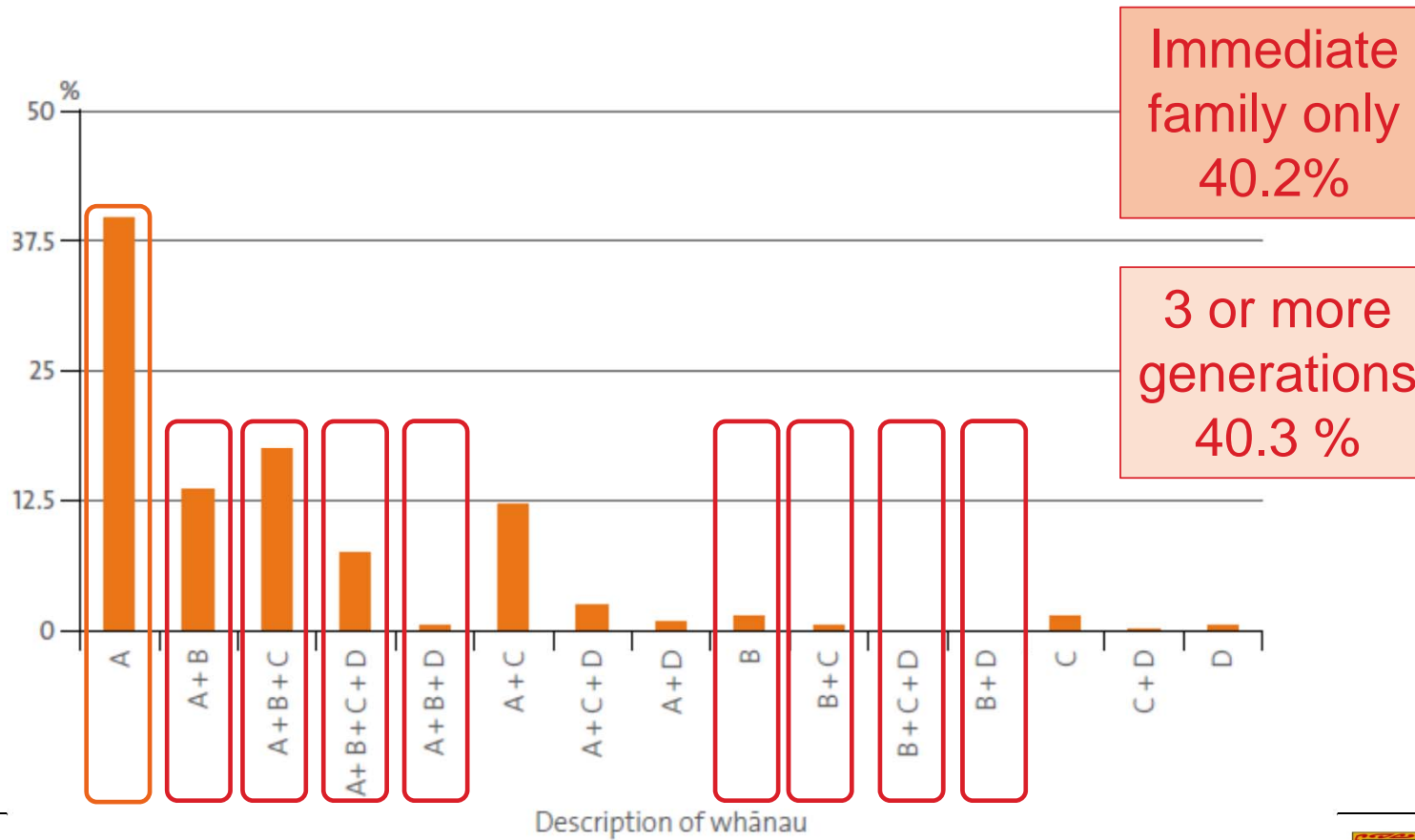
C. Aunts and uncles, cousins, nephews and nieces, other in-laws

B. My grandparents, my grandchildren

D. Close friends, others



Distribution of responses by whānau category



**Major Crown
investment in
deficit
measures**

**??? Maori
development**

<https://shinyapps.stats.govt.nz/sii/>

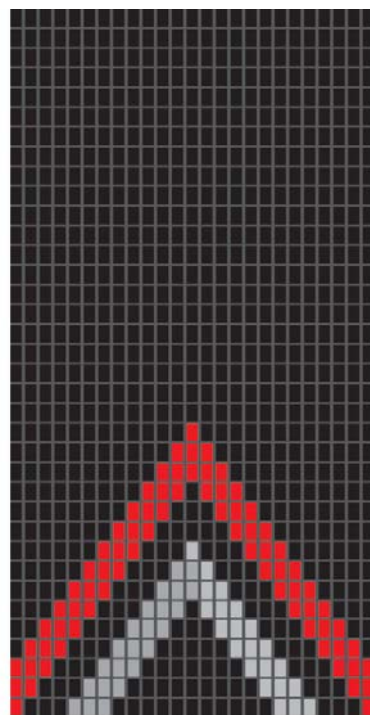
The Potential
of Linked
Data to
inform Maori
development
is recognised

Maori providers and researchers moving rapidly into this space – but...

To what extent can **Maori engage** with and **benefit** from the linked data resources?

- Technological and skill barriers to engagement
- Measures and approaches must match Maori aspirations
- social licence/consent/partnership/ or control

A **Top-down approach** to driving these initiatives does not match up well to Maori development parameters or models of engaged partnership



TE MANA RARAUNGA

Māori Data Sovereignty Network

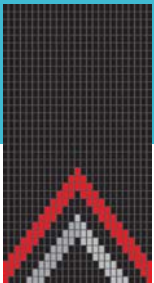
Background to Te Mana Raraunga

**'Indigenous Data Sovereignty'
ASSA workshop in Canberra
June 2015**

**Statistics NZ workshop on
'Maori and Statistics'
August 2015**

**Convened hui to establish
Te Mana Raraunga October
2015**

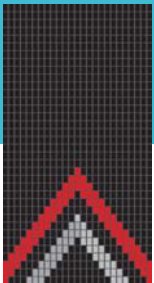
**Hui to ratify a charter for Te
Mana Raraunga
April 2016**



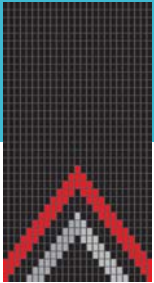
Charter: Purpose

The purpose of Te Mana Raraunga is to enable Māori Data Sovereignty and to advance Māori aspirations for collective and individual wellbeing by:

1. **asserting Māori rights and interests** in relation to data,
2. ensuring **data for and about Māori can be safeguarded** and protected,
3. requiring the **quality and integrity of Maori data** and its collection,
4. advocating for **Māori involvement in the governance** of data repositories,
5. supporting the **development of Māori data infrastructure** and security systems,
6. supporting the **development of sustainable Māori digital businesses and innovations.**



Values:
Mana-Mahi
Framework



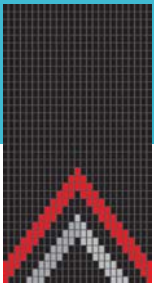
Mana
(Governance)

- Whanaungatanga
- Rangatiratanga
- Kotahitanga

Mahi
(Operations)

- Whakapapa
- Manaakitanga
- Kaitiakitanga

Who is involved with Te Mana Raraunga?



Te Mana Raraunga is a network of Maori with interest in using data to support Iwi/Maori rangatiratanga (sovereignty)

Te Pokapu – Working Group:

- A/P Tahu Kukutai – indigenous demography
- Andrew Sporle – health statistics
- Maui Hudson – indigenous knowledge, genetic data
- Dr Rawiri Jansen – health and business data
- Kirikowhai Mikaere – tribal data
- Vanessa Clark – business data
- Warren Williams – digital businesses
- Dan Te Kanawa – tribal enrolments, social data
- Wikuki Kingi – Maori business, indigenous knowledge
- Dr James Hudson – data for advocacy

So, what do we do?

Build Capability

- Include Maori definitions
- Address data quality
- Include development measures
- Ensure Sustainability (?Census)

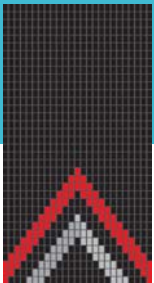
Build Capacity

- Awareness of the IDI system
- Improve accessibility
- Pilot projects
- Workforce development

Engagement

- Ensure participation
- Address governance
- Resolve ownership

What Advocacy is Te Mana Raraunga doing?



Advocacy

- Held 3 x hui, next one planned for November
- Developed Charter
- Socialised the idea of IDS and MDS through formal invitations and existing networks
- Presented to Iwi Leaders Forum
- Engaging with Policy initiatives
 - Data Futures Partnership
 - Statistics Act Review
 - Iwi Classification review
- Representation on
 - Virtual Health Information Network Governance Group
 - Statistics Legislation Review panel
 - IMSB Data Strategy Expert Panel
- Connections with:
 - Iwi Leaders Data Working Group

**Already regarded by Govt
as key voice in data
policy and infrastructure
development**

What Projects have Te Mana Raraunga initiated?



Projects

- Contributed to book on 'Indigenous Data Sovereignty'
- Selected to run a Stats NZ Pilot Partnership Project
- Evaluating a Data Sharing Agreement for the National Hauora Coalition
 - Developed a Maori Data Audit Tool
 - Creating Maori Data Governance Framework
- International Meeting and Panel presentations on IDS at NAISA
- Research proposals to Law Foundation / MBIE / NSC's/HRC
- Co-organisers of the International Indigenous Open Data Forum in Madrid October 2016
- Preconference workshop on IDS in November 2016 (pre IO DC)

Projects detail

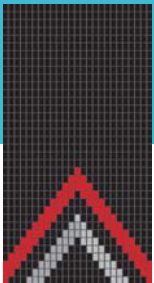
Stats NZ Pilot Project “Adding a Maori GIS capability to the Official Statistics System”

- Creating iwi-defined GIS boundaries within the data structure
- A **permanent structural change** to the data resource.

Equity Visualiser

MBIE Project “A national Maori longitudinal study within the OSS”

- Builds on SNZ pilot project
- Outcomes aligned with Maori objectives
- A **permanent structural change** to the data resource.



The Population Equity Visualiser (with Alex Stuteley)



Numerator Data

Count data

Micro data

BYO data

Denominator Data

National

Sub-national

- Regional
- Council
- DHB

- Census counts
- Estimates
- Projections

Population Standards

External

- Segi
- WHO
- NZ Pops
- +???

Internal

SHINY

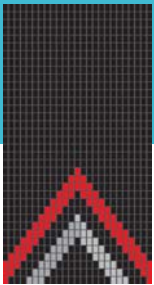
Point and click interface

Analyser

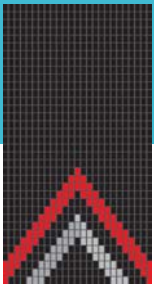
Graphics

Export

The Population
Equity
Visualiser
- Beta demo



Where is Te Mana Raraunga going?



- **Build a strong conceptual and political foundation** for IDS
- **Advocate for Maori/Iwi interests** across broader data environment
- **Build capacity and capability** amongst Maori/Iwi to use data to support their aspirations
- **Network and grow** with indigenous colleagues (US, Australia, International organisations already started)



Indigenous Data Sovereignty Network

Established 2016

Initial Meeting
Honolulu
19/05/2016



Kuleana, Mana Motuhake, Nayri Kati

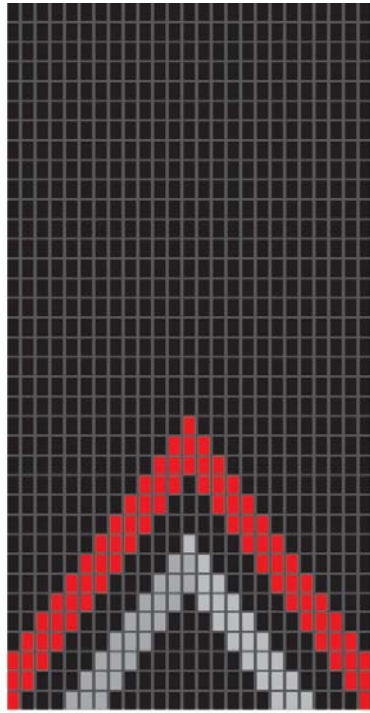
What
Indigenous
Data
Sovereignty
means to us



US Indigenous
Data
Sovereignty
Network

(they have better copy writers)

US SELF-DETERMINATION COOPERA
INDIGENOUS KNOWLEDGE CAPACI
DATA INFORMATION CONTINUITY V
SOVEREIGNTY VOICE GOVERNANCI
NETWORK ADVOCACY IDENTITY AL
DLOGY CULTURAL SOLUTIONS OWNEF
BEING COMMUNITY **JOIN THE** VISIBILI
ATION LEADERSHIP **NETWORK** ENGAC



TE MANA RARAUNGA

Māori Data Sovereignty Network

**Advocating for the development
of capacity and capability across
the Māori data ecosystem
including:**

- Data rights and interests
- Data governance
- Data storage and security
- Data access and control