

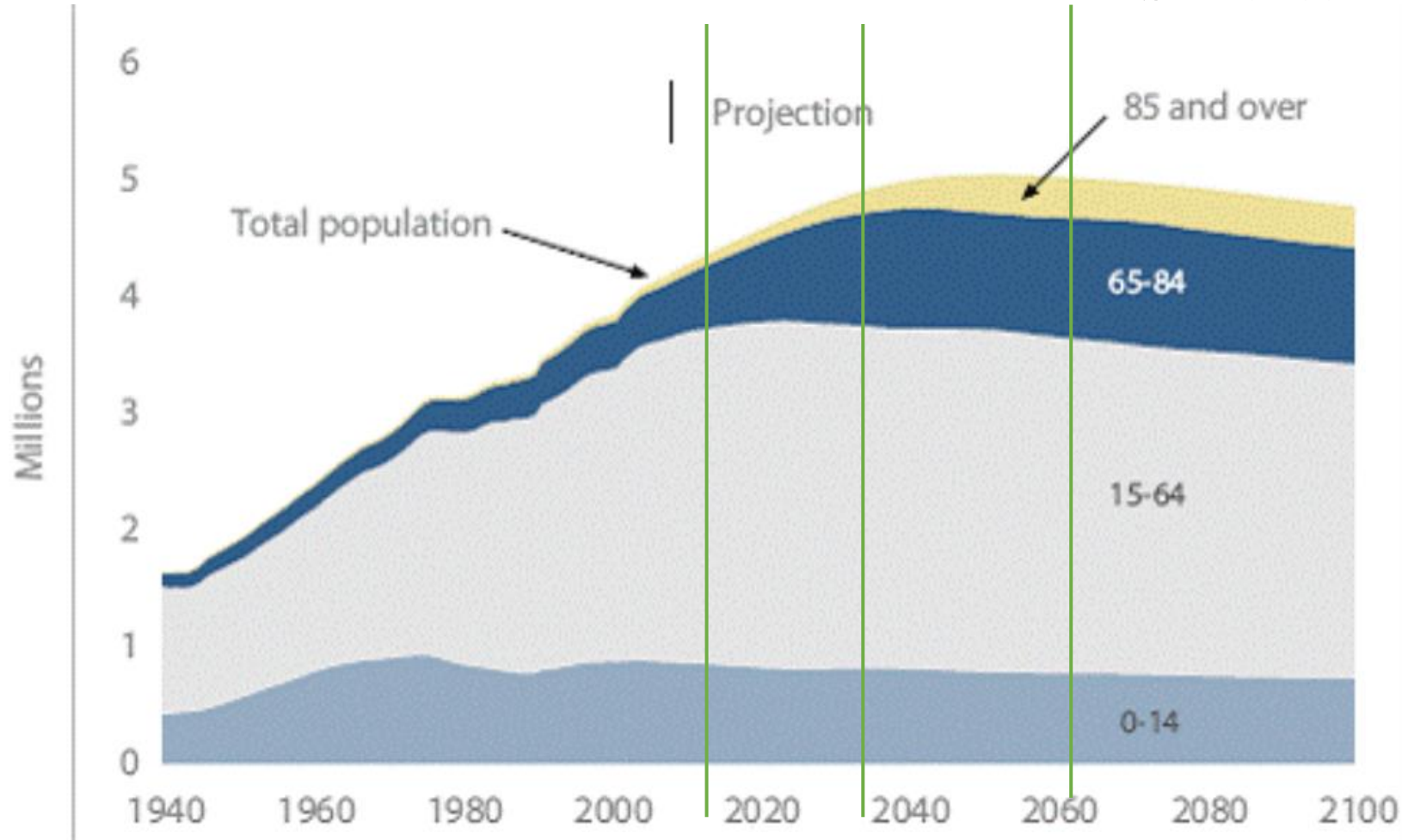
Ageing Well: from here to 2060

**Professor Ngaire Kerse,
Joyce Cook Chair in Ageing Well**

10 August 2021

Support ratio 50-74/85+

Statistics New Zealand



	2016	2033	2063
total	15:1	8.8:1	4.9:1
Women	7:1	4.6:1	2.4:1

Patterns of care

Attitudes to ageing

Māori, Pacific, Asian

Migration and diaspora

Ageing with conditions

HIV, addictions

Health reform

Health conditions

multimorbidity

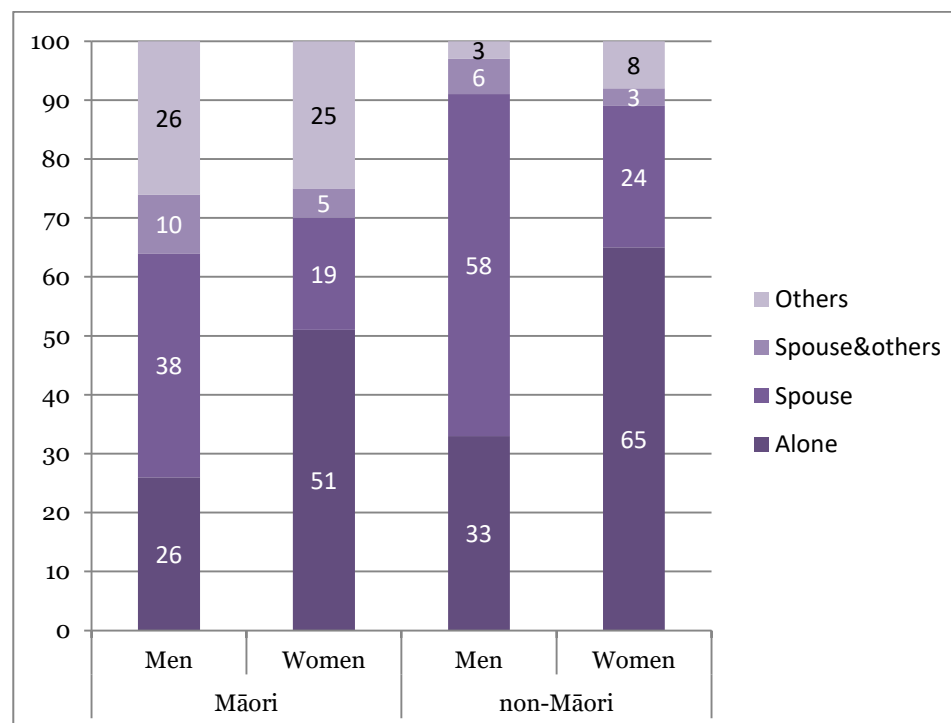
polypharmacy

Complexity of health care

Expensive therapies

Some moderation of
disability

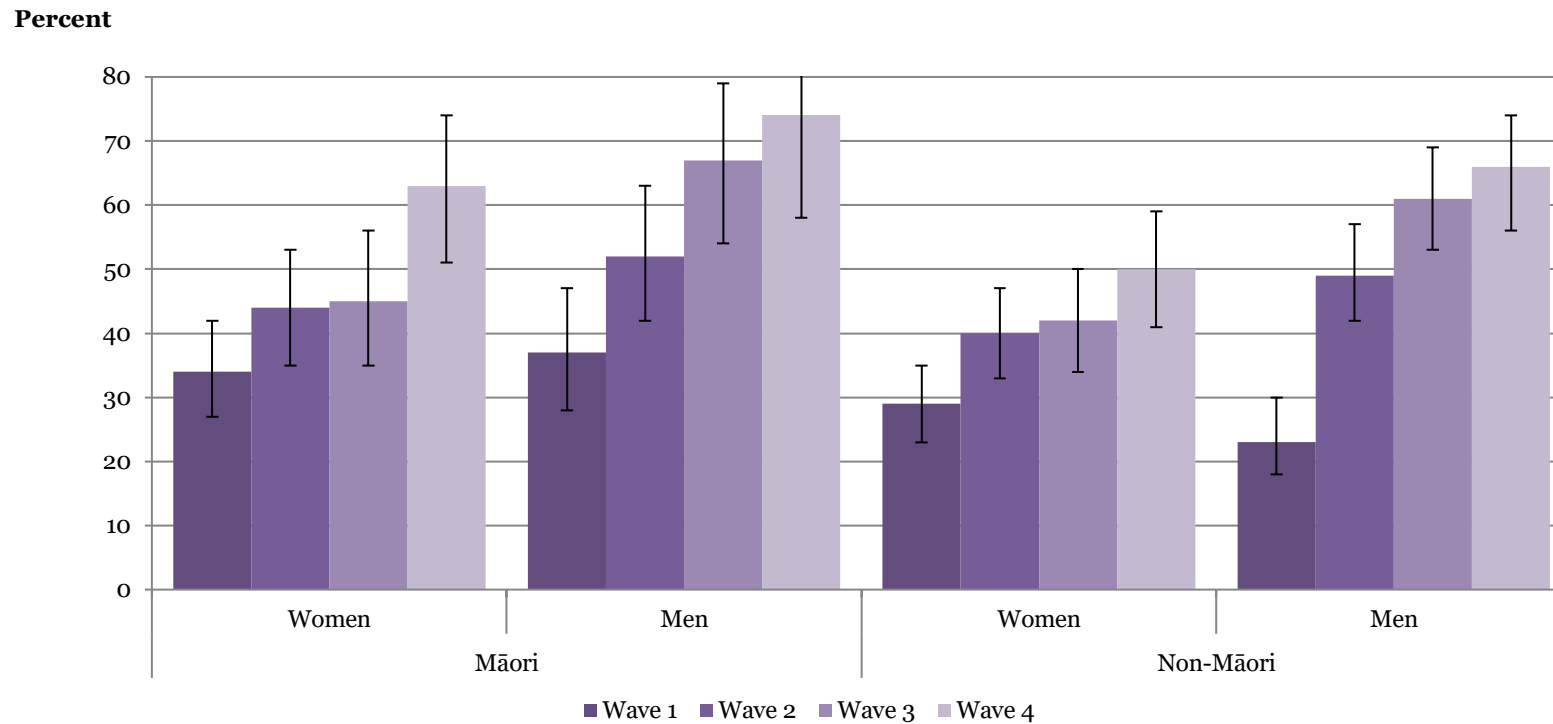
Figure 2 Living arrangement, by sex and ethnic group.



Source: LiLACS NZ first wave of data collection

Note: living with spouse included partners

Informal care

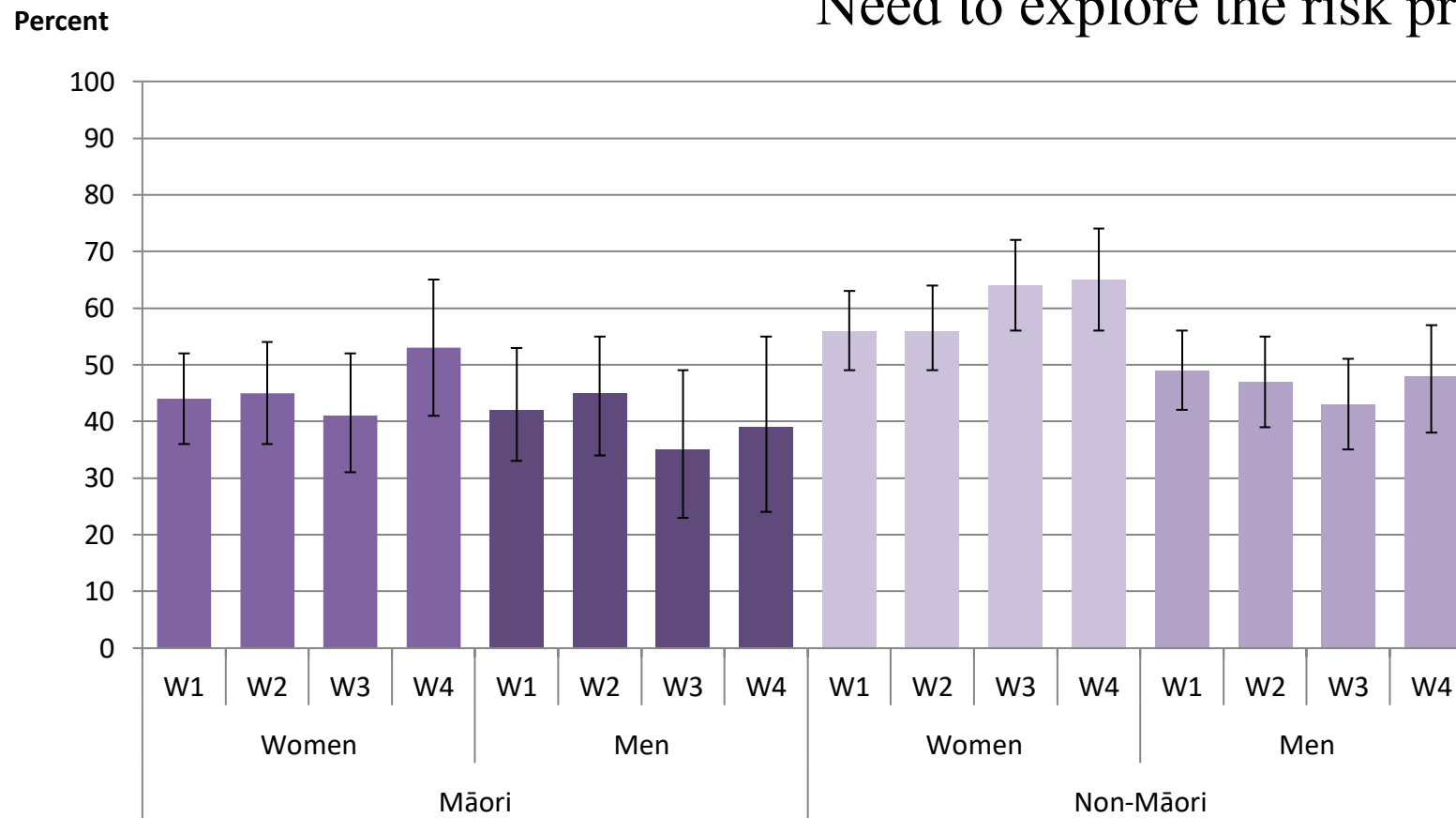


Closely associated with level of function

More women, more Māori received informal care

Receiving support services

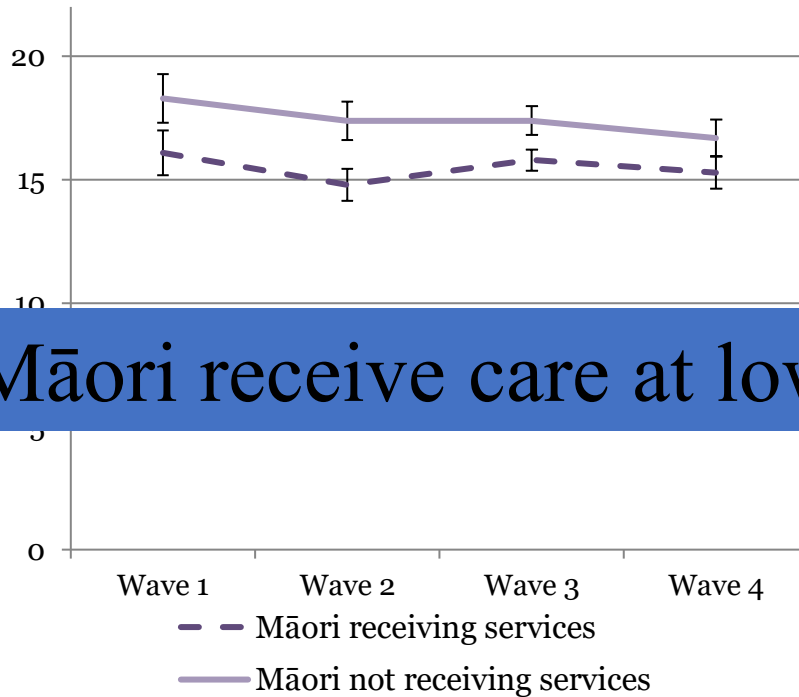
Need to explore the risk profiles



Services by level of function

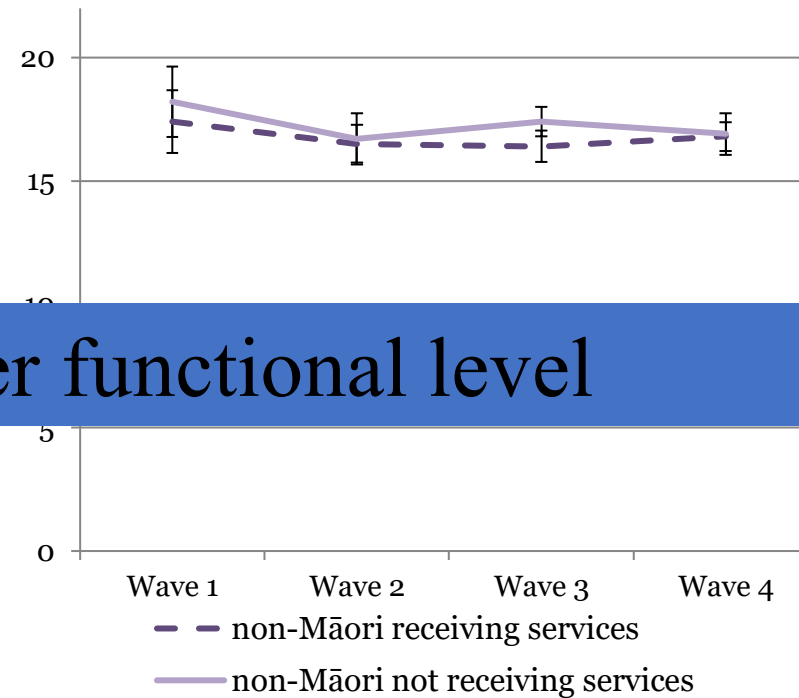
Māori

NEADL
Score



Non-Māori

NEADL
Score



Māori receive care at lower functional level

Care home placement.

Jo Broad, Marycarol Holdaway

Median FU 5.9 years

¶

+

	All-Participants¶	Māori¶	Non-Māori¶
	N=860¶	N=391¶	N=469¶
Entry to LTC, n.(%)¶	278.(32)¶	87.(22)¶	191.(41)¶
No entry to LTC, n.(%)¶	582.(68)¶	304.(78)¶	278.(59)¶

Predictors of care home placement

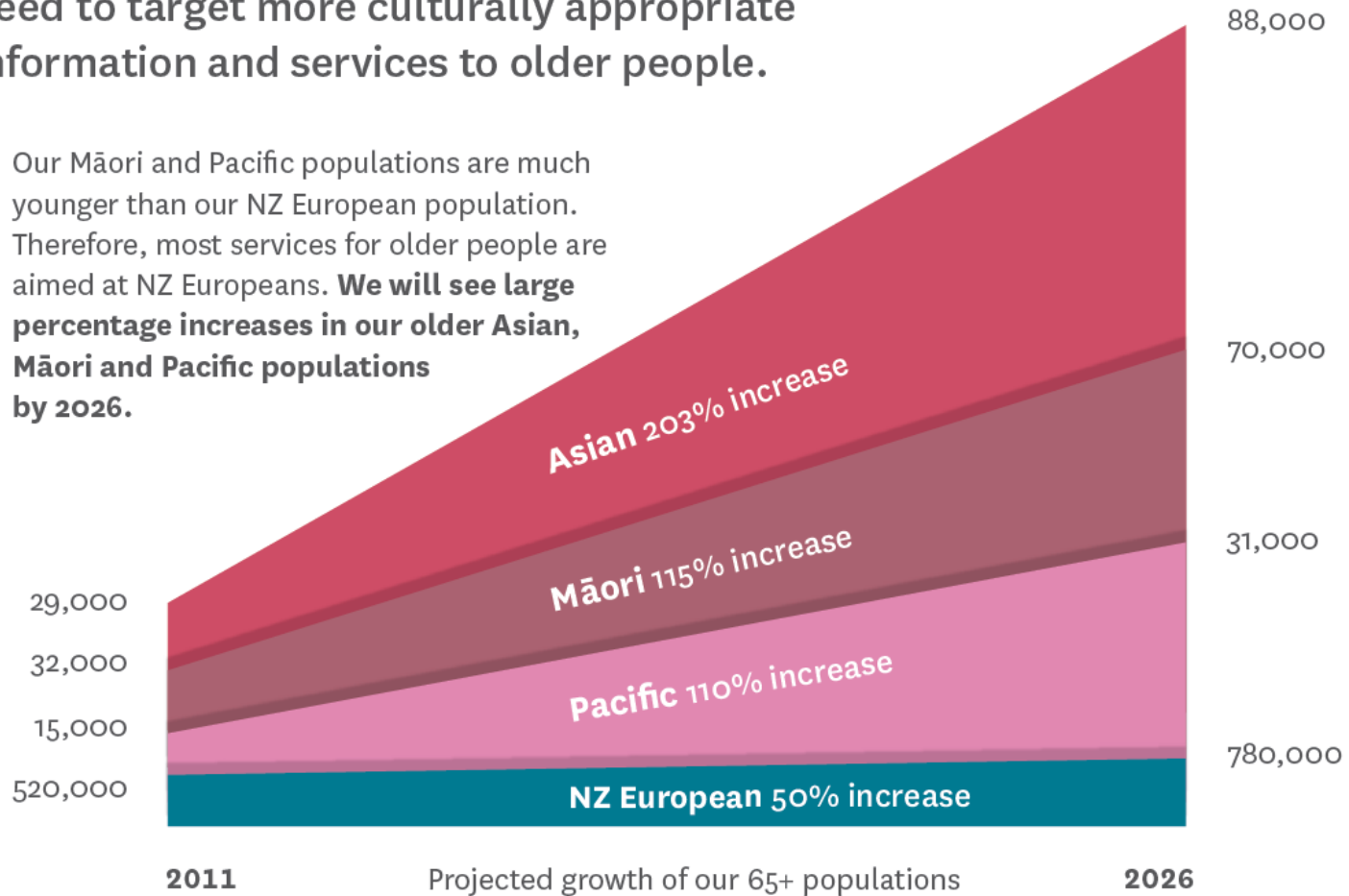
	Māori	Non-Māori
Age	1.77 (1.39, 2.23)	
Living alone	1.72 (1.06, 2.80)	1.41 (0.99, 2.03)
Self-rated Health poor/fair	1.53 (0.98, 2.41)	1.38 (1.06, 1.80)
ADLs poor	1.04 (0.97, 1.12)	1.14 (1.09, 1.19)
Depression *	1.48 (0.95, 2.02)	1.18 (0.93, 1.49)

Controlled for age, sex

Diversity of older people

Our older population is becoming more culturally diverse, and organisations will need to target more culturally appropriate information and services to older people.

- ▶ Our Māori and Pacific populations are much younger than our NZ European population. Therefore, most services for older people are aimed at NZ Europeans. **We will see large percentage increases in our older Asian, Māori and Pacific populations by 2026.**



The future

- Primary care investment
- Community engagement
- Intersectoral work
- Health, social, transport, housing, local govt together