



UNIVERSITY OF
AUCKLAND
Waipapa Taumata Rau

MEDICAL AND HEALTH SCIENCES **UNDERGRADUATE PROSPECTUS 2026**

Health Sciences | Nursing | Medical Imaging | Medicine | Optometry | Pharmacy



#1
UNIVERSITY IN
NEW ZEALAND¹

#1
GRADUATE
EMPLOYABILITY²

TOP 50
IN THE WORLD
FOR 8 SUBJECTS³

Ko Waipapa Taumata
nei, e karanga nei ki t
ki te kai i te mātaura
Nau mai, haere mai,
ki te whare whakairo

We are Waipapa Taumata Rau, we greet, we call to the many who desire the sustenance of knowledge.
Welcome, come forth and fasten to the carved meeting house, Tāne-nui-a-rangi.

Rau mātou, e mihi
te marea e hiahia ana
nga

herea mai tōu waka
o Tāne-nui-a-rangi

Panonitia te ao

Make a difference

Nau mai, haere mai. Greetings, Talofa lava, Mālō e lelei, Fakaalofa lahi atu, Kia orana and a warm welcome to you from Mātauranga Hauora | Faculty of Medical and Health Sciences

Working with some of the world's best teachers, researchers and healthcare professionals, we will provide you with learning and real world experience. You will gain the skills needed to make a difference to people's health and wellbeing and to shape the future of healthcare. In short, enrolling at the Faculty of Medical and Health Sciences will open the door to incredible opportunities.

Now more than ever, our health and research systems need students like you, who are ready to tackle today's healthcare challenges. Are you committed to eliminating inequities? Are you ready to embrace new technology, advance health policy, learn cutting edge biomedical science and lead innovative research? If so, we can set you up to transform the future of healthcare in our communities.

We are committed to enhancing the health and well-being of our communities, equitably. Our priority is to grow and educate the future health professional workforce, population health specialists and biomedical scientists. We particularly encourage students who are Māori, or Pacific, and those from regional and rural communities in Aotearoa. We will be happy to receive your application to study here at Waipapa Taumata Rau, University of Auckland.

Established in 1968, we have an international reputation as a world-leading health and medical sciences faculty. Auckland's global ranking amongst the top 100¹ universities is evidence of our commitment to academic excellence.

Our population health, biomedical science and health professional programmes in Nursing, Health Sciences, Pharmacy, Medical Imaging, Optometry and Medicine are taught by world renowned academics and researchers. We're very proud to provide an excellent educational experience, offering professional, engaging teaching, tailored to the evolving needs of the world.

We currently have almost 6,000 students enrolled in our campuses across New Zealand. Our undergraduate programmes emphasise clinical or health science experiences where you will develop your confidence in supervised environments.

Your learning will take place in our world-class facilities, state-of-the-art teaching and research laboratories, lecture theatres, simulated hospital rooms and operating theatres. You will also have access to our specialist medical library and Whakaaro Pai, Medical Sciences Learning Centre.

As a student you will be part of a diverse and vibrant campus community and have access to a variety of clubs, societies and dedicated support services. These all provide opportunities to make friends and grow your professional network.

On behalf of our faculty, whatever study option in health you choose, we are here to help you get future-ready to make a positive difference to the lives of others.

Let's do this together.
Ngā mihi mahana



PROFESSOR WARWICK BAGG

Manukura | Dean
Mātauranga Hauora |
Faculty of Medical and Health Sciences
Waipapa Taumata Rau | University of Auckland



PROFESSOR MATIRE HARWOOD

Ngāpuhi
Manukura Rua | Deputy Dean
Mātauranga Hauora |
Faculty of Medical and Health Sciences
Waipapa Taumata Rau | University of Auckland

¹QS World University Rankings 2025: University of Auckland 65th worldwide



Contents

Welcome

Make a difference	4
Māori and Pacific at our faculty	6
Vision 20:20	7
Study with us	8
We're here to help you succeed	10
Life on campus	11
Make a difference in our rural communities	13

Study options

Study options	14
Hikitia Te Ora – Certificate in Health Sciences	17
Health Sciences	19
Nursing	20
Medical Imaging	22
Medicine	25
Optometry and Vision Science	27
Pharmacy	28
Biomedical Science	30

Next steps

Entry and programme requirements	32
How to apply	34
Dates to remember	35

Cover attributions:

¹Times Higher Education 2025; and 65th worldwide QS World University Rankings 2025

²QS World Rankings Graduate Employability, number one in NZ and 68th Worldwide in 2023

³QS World Rankings by Subject 2024

Nau mai, haere mai Māori and Pacific at our faculty

E ngā waka, e ngā mana, e rau rangatira mā, tēnā rā koutou katoa.
Malo e lelei, kia orana, talofa lava, fakaalofa lahi atu, ni sa bula,
taloha ni, halo olaketa, ia orana, kam na mauri.

Welcome to the Faculty of Medical and Health Sciences at the University of Auckland. Through Vision 20:20, we are working to help more Māori and Indigenous Pacific students become health professionals, and to thrive in roles ranging from doctors and nurses to policy makers and researchers.

We have a vision: To improve the health and wellbeing of Māori and Pacific communities and increase the diversity of the health workforce in Aotearoa New Zealand. By supporting Māori and Indigenous Pacific students to reach their health-related career goals, this vision moves closer to becoming a reality.



I am a proud graduate of the University of Auckland and of programmes within this faculty. As a leader and senior staff member, I can assure you that the quality of our programmes and our staff's commitment will provide you with the foundation you need for a rewarding career in health.

I look forward to welcoming you to our university.

PROFESSOR PAPAARANGI REID (Te Rarawa)

Tumuaki
Deputy Dean (Māori)



I am delighted to add my welcome to those of the Tumuaki and Dean of the Faculty of Medical and Health Sciences. We are building a learning environment that will continue to be the preferred place to study for a career in health in Aotearoa New Zealand, the Pacific and beyond.

I look forward to meeting you should you choose to study at the University of Auckland.

PROFESSOR SIR COLLIN TUKUITONGA

Manupiri Te Moananui-a-Kiwa
Associate Dean (Pacific)

Vision 20:20

This is a key initiative to increase the number of Māori and Pacific professionals in the health workforce. Vision 20:20 is an Indigenous-led, comprehensive, collaborative, student-centric intervention, managed by Te Kupenga Hauora Māori (TKHM). It includes the Māori and Pacific Admission Scheme (MAPAS), Hikitia Te Ora – Certificate in Health Sciences (CertHSc), Whakapiki Ake (WPA), and Pacific Health Wayfinders (PHW).

Whakapiki Ake (WPA)

Māori Recruitment

Whakapiki Ake is a recruitment programme that actively engages with rangatahi Māori enrolled in secondary schools. We promote health as a career and encourage Māori students to enter FMHS programmes. Whakapiki Ake introduces health career options, supports students to apply to FMHS, helps with transitioning to tertiary study and provides financial assistance for successful applicants.

Hikitia Te Ora – Certificate in Health Sciences (CertHSc)

Bridging/Foundation programme

The Certificate in Health Sciences is a one-year bridging/foundation programme that prepares Māori and Indigenous Pacific students for successful tertiary study in health. We focus on academic and scientific literacy, including Chemistry, Physics, Biology, Mathematics and Population Health, which are necessary for success in first-year courses taught at FMHS.

Māori and Pacific Admission Scheme (MAPAS)

Admission/Retention/Academic and Pastoral Support

MAPAS is a long-standing programme that provides prospective Māori and Indigenous Pacific students with support around the admissions process.

Current MAPAS students are assisted with admissions, and are provided with academic and pastoral support to successfully complete and graduate from their programmes.

In addition, our team supports MAPAS students on their cultural journey. In short, we encourage MAPAS students to successfully complete and graduate from their programme, whilst supporting them on their cultural and academic journey towards a career in health.

Pacific Health Wayfinders (PHW)

Indigenous Pacific Recruitment

Pacific Health Wayfinders (PHW) is a student recruitment programme that actively engages with Indigenous Pacific students in Years 9 to 13 to promote a career in health. We deliver interactive programmes and activities, including on-campus events, in-school visits and family-centred fono to support students in their transition into FMHS programmes.

**Whaia te pae tāwhiti kia tata
whakamaua te pae tata kia tīna.**

Reach for the distant horizons
and hold fast to those that you attain.

Study with us

We are dedicated to helping you reach your potential and to build the foundations for a successful career in health. Join us and you'll be taught by teachers and researchers at the top of their fields. They will support you to become future-ready for almost any role in the health sector.

Our faculty

Our Grafton Campus is situated opposite Tāmaki Makaurau Auckland's largest hospital, on the doorstep of Pukekawa, Auckland Domain.

We provide state-of-the-art facilities, including modern teaching and study areas to meet the future needs of the faculty.

We host six exceptional schools – Medical Sciences, Medicine, Nursing, Optometry and Vision Science, Pharmacy and Population Health – where you can choose from a range of undergraduate study options. The faculty is also home to Te Kupenga Hauora Māori (TKHM) who manage Vision 20:20, our initiative to increase the number of Māori and Pacific professionals in the health workforce.

Exceptional teaching, research and people

Our faculty's academic staff are internationally renowned, directing global research projects designed to better people's lives in New Zealand and worldwide.

We are considered the largest biomedical research faculty in New Zealand, and as a student you'll learn in a research-rich environment. We host four transdisciplinary University Research Centres, a Centre for Research Excellence and numerous Faculty Research Centres.

World-class facilities

Teaching and research facilities at our Grafton Campus are world-class, giving you access to the latest technologies and techniques to support you on your learning journey.

Grafton Campus houses stunning amenities that include a dedicated Student Hub, a specialist medical and health sciences library, patient simulation centres, purpose-built laboratories, teaching clinics, research facilities, cutting-edge research centres, an Information Commons with computers for student use, a licensed café and our Auckland Medical Research Foundation (AMRF) Medical Sciences Learning Centre – Whakaaro Pai which is a valuable educational resource for our students.

auckland.ac.nz/fmhs/mslc-whakaaro-pai

#1 New Zealand University

We look forward to you joining us at Aotearoa New Zealand's top-ranked university. Our university is ranked 65th in the world.*

It has also been ranked first in Oceania and fifth in the world for sustainability.** Our strong international reputation means our qualifications are well respected overseas, and our graduates are highly prepared for success.

Hands-on experience

You can choose from study options in Health Sciences, Nursing, Optometry, Pharmacy, Medicine and Medical Imaging. Each of our degree programmes features practical learning opportunities that allow you to apply your skills in real-world settings.

Our strong relationships with healthcare providers mean we can give our students unrivalled clinical placement opportunities throughout Aotearoa New Zealand. While on a placement, you'll be supervised by highly qualified health professionals as you develop your skills, gain experience and interact with a diverse range of people in our communities.

Teaching and training across the motu

All our campuses offer a supportive and friendly learning environment. In your first year, you could be studying at either City Campus or our Grafton Campus, which is home to most of the students in our faculty.

Depending on your area of study, you might also undertake training or a placement at one of our 10 clinical campuses and other sites located across the North Island. These include Northland, Auckland, Waikato, Tauranga, Rotorua, Whakatāne and Taranaki.

**Get
future-ready
to help improve
the health of our
people and
communities**

Find out more
auckland.ac.nz/fmhs

*QS World University Rankings 2025: 65th worldwide

**QS World University Sustainability Rankings 2024



We're here to help you succeed

At Mātauranga Hauora | Faculty of Medical and Health Sciences, we're nurturing individuals driven by purpose – our future leaders of healthcare. Studying with us will open the doors to a diverse range of health careers, where you can make a real difference to the health and wellbeing of others and our communities. We are here to help you become future-ready.

Get future-ready

We need students like you who can be adaptable and ready to address today's healthcare challenges, from health inequity to new technology, or to lead innovative research.

Our programmes have been developed in consultation with industry, health professionals and future employers to ensure you have access to the latest skills and knowledge to enter the workforce.

You'll learn how the healthcare system works and what shapes the health of communities. You'll also come to understand the causes of health inequities and develop an in-depth understanding of the field you are passionate about.

Innovative learning

Our programmes include a strong focus on the core skills you'll need in your future workplace. Our teachers, researchers and clinicians are passionate about delivering a curriculum that will challenge you to think in new ways, and develop your clinical, personal, professional and communication skills.

We provide model labs, simulated clinical learning environments, clinical campuses and teaching clinics. You'll learn in world-class training and research facilities and be taught by lecturers and researchers with the latest knowledge and experience in the New Zealand health system.

Build your confidence

You'll benefit from practical learning opportunities and extensive hands-on clinical experience in many of our programmes. You'll get to see what it's like to work in healthcare, build your confidence and put into practice what you learn in your classes.

Career opportunities

We work closely with Te Whatu Ora – Health New Zealand and many other health organisations across Aotearoa New Zealand. These same partners offer our graduates opportunities to make positive and informed decisions about career options after leaving university.

1 in New Zealand for graduate employability*

Our graduates are highly sought after. They work in a huge variety of roles as part of the country's health workforce – in clinical settings, medical research spaces, and organisations that focus on health policy, education and promotion.

Many of our programmes provide great prospects for employment in the public, private and community non-profit sectors, with the University ranked top in New Zealand for graduate employability.

Advance your skills

If you're looking to advance your skills, deepen your knowledge or specialise in a chosen field, you can continue with postgraduate study. You can choose from over 50 subjects across more than 30 programmes, including postgraduate certificates, diplomas, masters and doctoral qualifications.

*QS World Rankings Graduate Employability 2023

Life on campus

Starting your university journey can be a big step, and we're here to support you.

When you join us, you become an important member of our vibrant, diverse, and supportive campus culture, where we put your health, wellbeing, and safety first. You will have the opportunity to get involved, make new friends and connections, take part in a range of fun events and connect with our dedicated Student Support and Engagement team.

Student support

We want to ensure that you feel supported throughout your time at university. All our students have the opportunity to access academic, personal, or professional support provided by our dedicated Student Support and Engagement team. This includes advice on how to manage your workload, what courses to enrol in, and how to navigate any personal challenges you might have.

auckland.ac.nz/fmhs/student-support

Support for Māori and Indigenous Pacific students

If you are Māori or Indigenous Pacific, our Māori and Pacific Admissions Scheme (MAPAS) whānau are also here to support you with every stage of your journey, from application to graduation.

auckland.ac.nz/fmhs/mapas

A home away from home – Grafton Hall

If you are coming from outside of Auckland, the University offers a range of accommodation options close to the cbd and just a short walk from Grafton Campus. Grafton Hall offers modern facilities, including spacious dining and social spaces, as well as large single bedrooms.

auckland.ac.nz/grafthonhall

Visit a Student Hub

If you would like to speak with someone or access any of our services, you can drop into our dedicated Student Hub at Grafton. (See the back cover for other locations.) Our friendly staff are available to provide you with advice on any aspect of your studies and life at university.

auckland.ac.nz/student-hubs



Make new connections

Uni is not just about studying hard – it's also a great chance to explore new interests, make friends, and venture outside your comfort zone.

You'll have the chance to join a range of clubs and student associations at our faculty where you can make new friends and share experiences that you'll treasure for the rest of your life. The clubs or associations you could join include:

- Auckland Pasifika Health Initiative
- Grassroots Rural Health Club
- Women in Health Network
- Auckland University Medical Students' Association
- Auckland Pharmacy Students' Association
- Auckland University Population Health Students' Association
- Medical Imaging Student Association
- Nurses of Auckland University Student Association
- New Zealand Optometry Student Society
- Student Association for Medical Sciences

auckland.ac.nz/fmhs/student-life

auckland.ac.nz/campuslife

Spaces to hang out

Our faculty offers a range of spaces around Grafton campus where you can find a place to study, chill with friends or grab a bite to eat.

Relax outdoors on the campus lawn or beautiful parks nearby, catch up with friends at our onsite café, or take a seat on the many chairs or couches located throughout the campus. If you are looking for a quiet space to study, head to the Philson Library, our dedicated specialist medical library.

A safe, inclusive and equitable place to study

The University offers a welcoming and safe environment in which students, staff and guests can succeed, thrive and reach their full potential. We have a range of initiatives, resources and support for students and their whānau.

auckland.ac.nz/equity

- Students with disabilities
auckland.ac.nz/disability
- Inclusive Learning
auckland.ac.nz/inclusive-learning
- Rainbow students
auckland.ac.nz/rainbow
- Students from refugee and migrant backgrounds
auckland.ac.nz/refugee
- Students from constrained economic backgrounds
auckland.ac.nz/low-seb

“Having grown up in Northland, I find Auckland isn’t too far away. Being able to come home during my breaks without catching a flight was one of the main appeals for me.

“I always enjoyed biology at school and found science interesting. I initially took a gap year after leaving high school as I wasn’t certain what the right path was for me.

“Medicine was always something in the back of my mind, but I had never met anyone who had studied it. A few years into my undergraduate degree, I was growing a passion for science communication. Upon meeting medical students, I realised what a well-rounded degree medicine offered. Aspects of personal development and growth intertwined with academics were very different from what my undergraduate degree had offered me.

“I will end up studying for six years, which I would never have considered an option when leaving school. My biggest misconception was that my life would stop or be put on hold while studying. But this is not the case. There is much more flexibility than you would think. You are still able to continue with your sports and hobbies.

“I love my life and it is a real privilege to be able to study full-time. I have had so many incredible opportunities and met incredible people through studying.”

Brooklyn Wilson

Graduate: Bachelor of Science

Student: Bachelor of Medicine and Bachelor of Surgery



Make a difference in our rural communities

Are you curious about rural health, and do you want to make a difference to the health of your communities? We provide our future students with rural training opportunities. You'll gain exposure to the range of health careers available in rural areas, get insight into rural practice and understand the differences in supporting healthcare needs in rural and urban communities.

Why rural health?

A career in rural health can be really rewarding and offers experiences typically not found in urban areas. As a student you will experience enhanced coordination and cooperation between professionals from different disciplines.

Training opportunities

Students in our health programmes have the opportunity to undertake rural placements where they can engage with rural communities, form connections with community health practitioners, and learn what it is like to practise in a rural setting.

Rural communities offer health students a fantastic hands-on clinical learning experience in a supportive, innovative and patient-centred environment. You will have greater exposure to a wide range of medical conditions where you can build your confidence in delivering patient care. You'll also learn about Hauora Māori and the differences in regional and rural healthcare. You'll test yourself in ways you may not have expected.

We work closely with health providers in regional and rural locations to provide the highest quality training experience. Many of our clinical placements take place at our clinical campuses and sites located across the North Island.

Rural Health Interprofessional Programmes

Our renowned regional-rural programmes in Hokianga and Whakatāne bring together undergraduate students from different health disciplines to learn in a rural environment. Students in these programmes gain clinical experience in a rural setting and develop innovative ways to assess the care of patients and families in their own communities, under the guidance of local healthcare professionals and academic staff.

Rural stream*

Our medical programme offers a rural stream to students interested in rural medicine. The stream develops rural confidence by providing early clinical exposure to rural medicine, tutorials and rural immersion activities that develop familiarity with the communities of rural training sites, create collegiality with previous stream students and rural clinicians plus encourage a sense of outdoor adventure. Rural stream students have pastoral support, support to develop rural electives and selectives and have priority for rural placement in the clinical years.

Rural Medical Immersion Programme*

Medical students have an opportunity to spend a full year working in rural communities to gain experience on placements at rural general practices and hospitals and to be mentored by community health providers and visiting specialists. The rural sites offered in the programme are Wellsford, Hauraki-Coromandel, Te Kuiti and Hāwera.

*Limited spaces – currently only available for MBChB students



Study options

Are you inspired to make a genuine difference to people's lives, to help and care for others and to play an important role in shaping the future of healthcare? If so, one of our undergraduate programmes may be for you. Qualified healthcare professionals are in high demand, and any of our programmes will equip you with the knowledge and skills needed for a rich and rewarding medical and health sciences career. We offer six undergraduate programmes: Health Sciences, Medical Imaging (Honours), Medicine, Nursing, Optometry, and Pharmacy. If you are of Māori or Indigenous Pacific ancestry, you can also prepare yourself for undergraduate study in our faculty with our one-year Hikitia Te Ora – Certificate in Health Sciences (CertHSc).

How our degree programmes are structured

Points per degree

Our degree programmes include a mix of core (compulsory) courses and other courses to ensure you acquire essential knowledge.

Degrees range from three to six years of full time study and consist of 120 points of full-time study per academic year. For example, our three-year Bachelor of Health Sciences degree involves 360 points of study, whereas our six-year Bachelor of Medicine and Surgery degree involves 720 points. Points are achieved when you pass a course. Programmes are divided into years, parts and stages.

Academic integrity requirement

All students admitted to the University of Auckland for the first time are required to complete the Academic Integrity course in their first semester.

auckland.ac.nz/academic-integrity-course

Waipapa Taumata Rau (WTR) core course

Our Nursing and Health Sciences programmes include a Waipapa Taumata Rau core course that should be completed in your first year.

Waipapa Taumata Rau is the Māori name gifted to the University of Auckland. The courses are called this to symbolise your aspirations to succeed in your studies at our University.

Designed to help your transition into University life, the WTR course focuses on core knowledge relevant to our faculty, the significance of place-based knowledge, and Te Tiriti o Waitangi. You will develop foundational critical and ethical thinking, communication, and collaborative skills essential for success in your undergraduate study and the workforce.

auckland.ac.nz/WTR-course

Transdisciplinary Futures

As part of the University's commitment to providing transdisciplinary learning opportunities from 2026*, students will be able to take a Transdisciplinary Futures course in their undergraduate degree.

Transdisciplinary learning focuses on the development of the skills and mindsets needed to respond to complex problems. It works on the idea that complex issues can be solved if worked on collectively through collaboration, discussions and co-design. Transdisciplinary skills are increasingly recognised as essential to the workplace as well as to your learning.

The world is changing rapidly, and there's never been a better time to look at global changes and the challenges they bring. Transdisciplinary Futures courses bring together students from across the University, and staff from diverse backgrounds, to collaborate and work collectively to explore alternatives for a better future. Choose from a range of Transdisciplinary Futures courses such as Democracy in the 21st Century, Our Environmental Futures: Te Taiao Tangata, Artificial Intelligence and Society, Migration Futures, the Future of Food, and Tagata Moana, and Tangata Whenua: Hawaiki Futures.

auckland.ac.nz/evolving-your-education

Helpful terms

Below are helpful definitions of programme terms you will see as you begin your journey to university:

Programme terms	Definition
Bachelors degree	Usually the initial programme of study a student completes at university
Course	A basic unit of study (The successful completion of a course results in the award of the points specified for the course.)
Core course	A compulsory course that covers knowledge essential for the completion of a programme of study
Guaranteed entry score	A rank score that guarantees students entry to a programme, sometimes subject to fulfilling other conditions such as attending an interview or audition or submitting a portfolio
Part	A defined subdivision specified in the regulations of some degrees
Prerequisite course	A course requirement that must be met before starting another course or programme
Programme	A prescribed set of one or more courses or other work, which when satisfactorily completed leads to the award of a University of Auckland certificate, diploma or degree
Stage	The academic level of study in a subject (Most undergraduate programmes comprise three stages. Stage I is the introductory level, Stage II is the intermediate level, and Stage III is the advanced level.)
Undergraduate	A student who is studying towards their first degree, or the courses that are part of their first (bachelors) degree
Year	The number of years you have been studying

*Transdisciplinary Futures is only applicable for the Bachelor of Health Sciences and Bachelor of Optometry programmes in 2026

Nursing and Health Sciences

You can enter directly from school into our Bachelor of Nursing and Bachelor of Health Sciences undergraduate programmes.

Bachelor of Nursing (BNurs)

Apply by 8 December for entry into Bachelor of Nursing (BNurs)	Year 1	Where can it lead?*
	Start BNurs (3 years)	Registered Nurse in a range of healthcare settings <i>Further study</i>

Bachelor of Health Sciences (BHSc)

Apply by 8 December for entry into Bachelor of Health Sciences (BHSc)	Year 1	Where can it lead?*
	Start BHSc (3 years)	Health policy expert Epidemiologist Health data analyst <i>Further study</i>

Medical Imaging (Honours), Medicine, Optometry and Pharmacy

Our programmes in Medicine, Medical Imaging (Honours), Optometry and Pharmacy are not open for direct entry from school. You will need to apply in your first year of undergraduate study by 1 July and complete a Multi Mini Interview (MMI).

Bachelor of Medical Imaging(Honours) (BMedImag(Hons))

Year 1	Year 2	Where can it lead?*
Complete core health-related courses as part of the Bachelor of Science (Biomedical Science) or equivalent Apply by 1 July for entry into BMedImag(Hons)	Start BMedImag(Hons) (Three years)	Medical Imaging Technologist Researcher Medical imaging educator <i>Further study</i>

Bachelor of Medicine and Bachelor of Surgery (MBChB)

Year 1	Year 2	Where can it lead?*
Complete core health-related courses as part of the Bachelor of Health Sciences or Bachelor of Science (Biomedical Science) Apply by 1 July for entry into MBChB	Start MBChB (Five years)	Doctor Surgeon <i>Further study</i>

Bachelor of Optometry (BOptom)

Year 1	Year 2	Where can it lead?*
Complete core health-related courses as part of the Bachelor of Science (Biomedical Science) or equivalent Apply by 1 July for entry into BOptom	Start BOptom (Four years)	Optometrist in private or hospital settings <i>Further study</i>

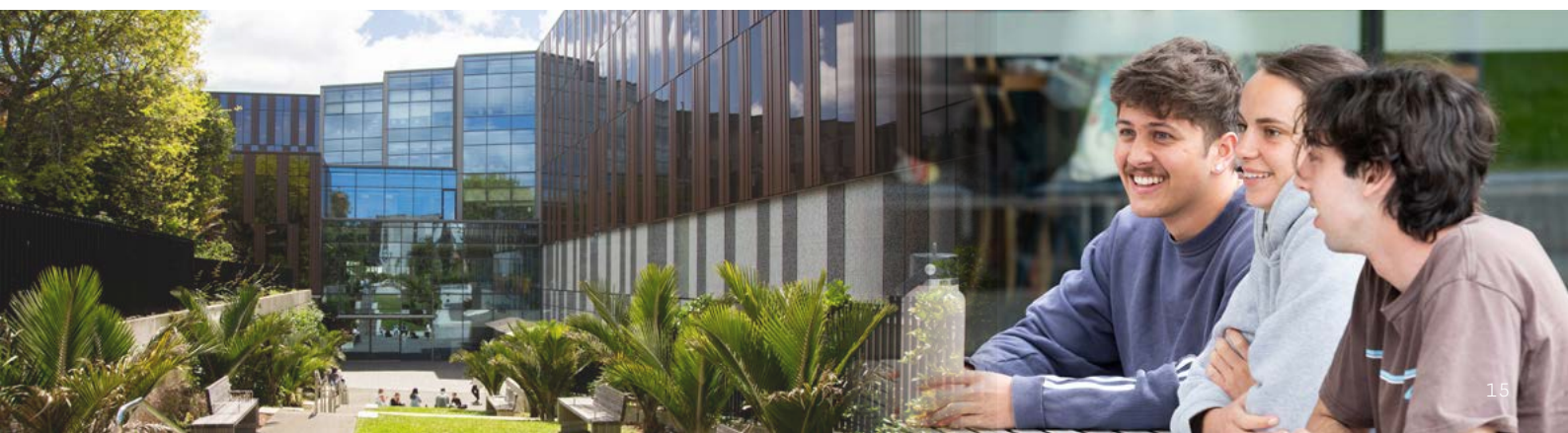
Bachelor of Pharmacy (BPharm)

Year 1	Year 2	Where can it lead?*
Complete core health-related courses as part of the Bachelor of Health Sciences or Bachelor of Science (Biomedical Science) or equivalent Apply by 1 July for entry into BPharm	Start BPharm (Three years followed by a one year internship)	Community and hospital pharmacist Pharmaceutical research and development Health policy and regulation <i>Further study</i>

Please see the University website and programme pages for the most up-to-date details on where our degrees can lead.

Selection criteria for Medical Imaging (Hons), Medicine, Optometry or Pharmacy, are currently under review.

Please monitor the University website and programme pages for the most up-to-date entry requirements.



“I didn’t intend to go to university when I was at school. It wasn’t until I started working at a psychiatric unit in a hospital aged 18, that I realised I had a passion for healthcare.

“While completing a nursing degree at MIT I was exposed to some very influential doctors who encouraged me in my decision to pursue medicine. I saw first-hand the influence that doctors, especially Māori doctors, have on patients’ lives. Pursuing this career was the perfect mix of working with people while also challenging myself academically.

“While born in Auckland, I moved up to Ahipara for primary school and returned to Auckland for secondary school. I had not completed sciences or other required subjects for the career path I want to follow, and so completing Hikitia Te Ora – Certificate in Health Sciences has allowed me to pursue Medicine, which otherwise wouldn’t have been possible. The programme offers such a great foundation for you to explore your interest in health sciences in a supportive and facilitative environment.

“MAPAS really has been beneficial for me in many ways. Not only was there continued support through staff and fellow students in my academic studies, I also made friends both inside and outside the classroom. MAPAS also has allowed me to strengthen my cultural connections while on my academic pathway, which I see as extremely important given the need for Māori doctors in Aotearoa.”

Deano Manga

Ngāti Kahu, Te Rarawa, Ngāi Tahu

**Graduate: Hikitia Te Ora –
Certificate in Health Sciences**

Student: Bachelor of Health Sciences



Mātai Pūtaiao Hauora

Health Sciences

Hikitia Te Ora – Certificate in Health Sciences (CertHSc)

Our Hikitia Te Ora – Certificate in Health Sciences (CertHSc) is open to students of Māori and Indigenous Pacific ancestry. This one-year programme will help strengthen your sciences, improve your academic skills and prepare you for undergraduate programmes in our faculty – all in a culturally safe environment. If you'd like to be considered for the CertHSc, you must attend the Māori and Pacific Admissions Scheme (MAPAS) General Interviews.

Hikitia Te Ora – Certificate in Health Sciences

Quick facts

Full-time: 1 year

Points per degree: 120

Taught at: Grafton Campus

Application closing date: 8 December 2025

Classes start: 23 February 2026 (includes Week 0 – a compulsory orientation week)

Highlights

- A pathway into Nursing, Health Sciences and Biomedical Science
- A combination of lectures, tutorials, lab sessions, wānanga, online learning and self-directed study within a culturally safe environment



What you'll be studying

You will learn concepts in various science subjects, such as human biology, physics and chemistry, along with population health. You will also develop academic and professional skills, such as note-taking, time management, mathematics, and essay writing.

Where can it lead?

The Hikitia Te Ora – Certificate in Health Sciences provides an entry pathway into the Bachelor of Nursing (BNurs), Bachelor of Health Sciences (BHSc) or Bachelor of Science in Biomedical Science. Subsequent entry pathways into Medical Imaging, Medicine, Optometry and Pharmacy are changing. Please refer to the online programme pages for the most up to date details.

auckland.ac.nz/fmhs/certhsc

This one-year programme will prepare you for further study

Find out more

auckland.ac.nz/fmhs/certhsc

"I always had an interest in using my privileges to make a difference and improve the lives of those less fortunate. I used to think a patient-facing job like a doctor or optometrist was the best pathway. However, while studying at the School of Population Health, I realised that many of the health inequities we see today are caused by wider systemic issues and intersecting factors that go beyond the health sector."

"Now I'm convinced working in public health will help me create meaningful and positive change. My degree has given me unique and valuable opportunities. I can't wait to use my knowledge in the workforce or pursue postgraduate studies in Aotearoa or overseas."

"I was extremely fortunate to receive a scholarship which partially covered the cost of the first-year halls. Moving to Auckland has given me countless amazing experiences, like representing Aotearoa overseas for two weeks while learning about non-communicable disease management and global health at Fudan University, Shanghai. The Bachelor of Health Sciences has helped me make friends and connections worldwide and given me a passion to use my knowledge from Aotearoa to improve health equity globally."

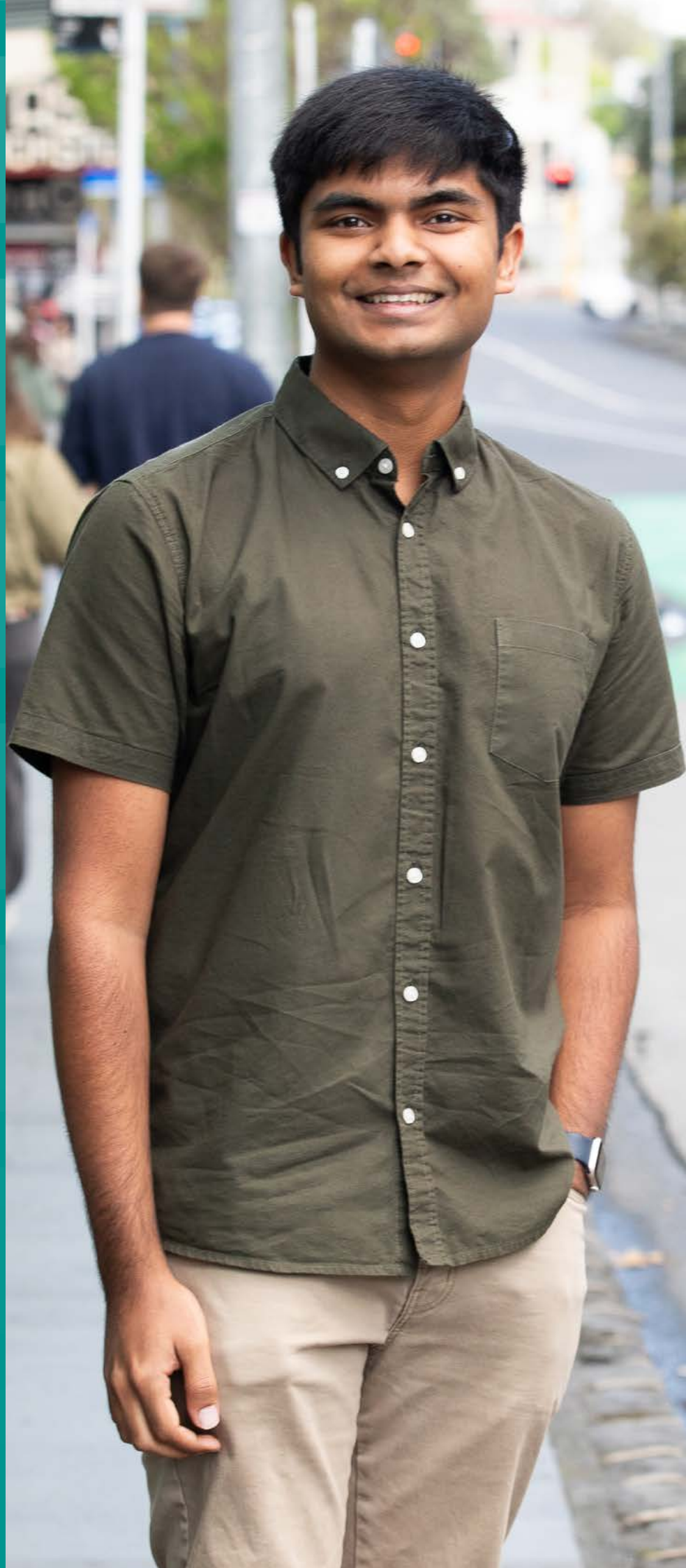
"It's ok not to know what you want to do after graduation. Graduates have worked in so many diverse careers including policy, health promotion, clinical professions and consulting. The opportunities are endless and FMHS staff will do their best to help you get where you want to be."

Sankalp Lanka

Student: Bachelor of Health Sciences and
Bachelor of Science conjoint



auckland.ac.nz/fmhs/bhsc



Mātai Pūtaiao Hauora

Health Sciences

Bachelor of Health Sciences (BHSc)

If you have a broad interest in public health, and especially if you're passionate about addressing population health, then our Bachelor of Health Sciences (BHSc) is a great place to start your journey. Our unique programme builds multidisciplinary understanding of health and healthcare in Aotearoa New Zealand – blending deep insights into the biological, social, cultural and behavioural dimensions of health and illness.

Bachelor of Health Sciences

Quick facts

Full-time: 3 years

Points per degree: 360

Taught at: Grafton Campus and City Campus

Application closing date: 8 December 2025

Classes start: 2 March 2026

Conjoint combinations: Explore possible conjoint options that complement this degree
auckland.ac.nz/conjoints-by-faculty

The structure of the BHSc programme and entry into Medicine, Medical Imaging, Optometry or Pharmacy programmes are changing. Please monitor the University website and programme page for the most up to date details.

auckland.ac.nz/fmhs/bhsc

Highlights

- Great prospects for employment in the public, private or community non-profit sector
- A pathway into undergraduate clinical programmes
- A work placement experience with a health employer in your final year of study
- Insights into the social, cultural, environmental, behavioural and biological understanding of wellness and ill-health
- Opportunities for student exchange and experiential learning
- Our programme includes a Waipapa Taumata Rau core course that should be completed in your first year. It focuses on core knowledge relevant to our faculty, the significance of place-based knowledge, and Te Tiriti o Waitangi
auckland.ac.nz/WTR-course

What you'll be studying

In the first year, you will focus on the health of populations, with courses that introduce you to health systems, social determinants of health, and population health.

In the second year and beyond, the programme covers a wide range of topics of interest to focus your degree.

Topics include:

- Environmental Health
- Epidemiology
- Health and Pacific People in New Zealand
- Health in Asian Communities
- Health Promotion
- Health Policy
- Health Research Methods
- Health Systems
- Healthcare Ethics
- Māori Health
- Mental Health and Addictions
- Population Health Nutrition

Where can it lead?

Employers in both the public and private sectors seek our graduates. Our BHSc opens up a range of exciting career opportunities in the health and social sectors, including:

- Policy analyst
- Health service manager
- Health promoter
- Health researcher
- Health services consultant
- Business development manager
- Community addictions counsellor
- Population nutrition specialist

Further study

The BHSc may also lead to postgraduate study in public health, health leadership, digital health, health promotion, health practice, audiology and health sciences in nutrition and dietetics.

*Prepare for a
great career in the
health sector*

Find out more
auckland.ac.nz/fmhs/bhsc

Mātai Tapuhi

Nursing

Do you have great communication skills, initiative, and the desire to help improve the health and wellbeing of others? Then nursing could be the career for you. Our highly respected Bachelor of Nursing (BNurs) programme will ensure that you have sound scientific knowledge and skills, as well as hands-on nursing experience. You'll participate in simulation learning using modern technology, practising your skills in a safe environment. After that you will work with real patients in one of our many clinical placements across Tāmaki Makaurau Auckland.

Bachelor of Nursing

Quick facts

Full-time: 3 years

Points per degree: 360

Taught at: Grafton Campus (some Year 1 classes are held at City Campus)

Application closing date: 8 December 2025

Classes start: 2 March 2026

Highlights

- An integrated programme that blends both academic and clinical learning throughout
 - An interdisciplinary approach that includes shared classes with students of Medicine, Pharmacy and Health Sciences
 - A supportive environment with dedicated lecturers who are all registered health professionals
 - Our programme includes a Waipapa Taumata Rau core course that should be completed in your first year. It focuses on core knowledge relevant to our faculty, the significance of place-based knowledge, and Te Tiriti o Waitangi
- auckland.ac.nz/WTR-course



What you'll be studying

In the first year we'll introduce the subjects that will form the foundation for your studies. These include Biology for Biomedical Science, Population Health, Behaviour, Health and Development, and Nursing in Practice.

Throughout your degree you will explore a range of practice areas. These include mental health nursing, health of older people, family healthcare, Māori and Pacific health, medical and surgical nursing, and leadership in nursing. You will also gain extensive clinical learning opportunities to underpin your knowledge.

Where can it lead?

After successful completion of the BNurs, graduates may apply for registration as a comprehensive nurse with the Nursing Council of New Zealand.

Nursing offers a varied career. You may find yourself working as a community nurse, mental health nurse, nurse educator, nurse manager, child health nurse or specialist nurse working in older people's health.

Further study

There are various postgraduate options for continuing your professional development in nursing. These include the Postgraduate Certificate or Diploma in Health Sciences (PGCertHSc or PGDipHSc), Bachelor of Nursing (Honours), Master of Nursing (MNurs), Doctor of Philosophy (PhD).



**Experience
nursing life with
clinical placements
at major healthcare
providers across
Tāmaki Makaurau
Auckland**

“I originally wanted to go down the biomedical science route. However, I decided at the end of the first year that it wasn’t for me so I decided to work full-time as a healthcare assistant to step back and figure out what I wanted to do.

“It was while working full-time in a rest home and observing the nurse’s role that I became fascinated with the technical skills and knowledge required to provide the best care to patients. This inspired me to apply for the Bachelor of Nursing. Because I had already done the first year of biomedical science through the University of Auckland and enjoyed the people, lectures and labs, I decided to go back.

“One of my most valuable experiences was participating in Advanced Life Support (ALS) with 6th-year med students in my 3rd year of nursing. We experienced life-threatening situations with a simulation manikin in a clinical skills lab where we would all work together to provide life support. It was exciting and scary but very rewarding to have the facilities and qualified staff to be able to do these simulations.

“Having undertaken 1100 hours in various clinical placements, I feel prepared for working life. The assignments and exams provided by the university have also allowed me to think more critically about certain aspects of nursing, which has been beneficial.

“The Bachelor of Nursing is a very rewarding degree. You never get bored attending all the various placements with unlimited learning opportunities and fascinating lectures and guest speakers. You will make lifelong friends in not only the nursing degree but also in the other health degrees. Get ready for some exciting times ahead.”

India Knight

Graduate: Bachelor of Nursing

 auckland.ac.nz/fmhs/bnurs

Mātātuhi Rongoā

Medical Imaging

Our Bachelor of Medical Imaging (Honours) (BMedImag(Hons)) offers extensive, hands-on clinical experiences to prepare you for a deeply rewarding, patient-centred career in an exciting and rapidly evolving profession. Ours is the first undergraduate Medical Imaging programme to be offered by a university in New Zealand. It's also the only honours degree in Medical Imaging.

Bachelor of Medical Imaging (Honours)

Quick facts

Full-time: 4 years

Points per degree: 480

Taught at: Grafton Campus

Application closing date: 1 July 2025

Classes start: 2 March 2026

Selection criteria are currently under review. The information here is correct at the time of publication. Please monitor the University website and programme page for the most up-to-date entry requirements.

auckland.ac.nz/fmhs/bmedimag-hons



Highlights

- Extensive hands-on clinical experience through the programme
- A Medical Imaging degree from Aotearoa New Zealand's top ranked university*
- In your Honours year, two postgraduate courses in Image Evaluation and Computed Tomography, and a research project to prepare you for pathways to higher qualifications
- Support from experienced Medical Imaging Technologists (MITs) in radiology departments
- Graduate eligibility for registration with the New Zealand Medical Radiation Technologists Board (MRTB)

What you'll be studying

You will complete courses in radiographic positioning and image acquisition, medical imaging physical principles and technology, image optimisation and evaluation, patient care and safety, sectional imaging anatomy and pathology, professional and evidence-based practice, and specialised imaging.

You will receive clinical experience in simulation labs, hospitals and outpatient radiology facilities.

Your final-year research project will help to develop your analytical and research skills in medical imaging.

Further study

Postgraduate qualifications are required for professional registration purposes in the imaging technology specialties of Magnetic Resonance Imaging (MRI), ultrasound and nuclear medicine.

Where can it lead?

MITs can work in a variety of roles, either in public hospitals or private radiology practices. Most will begin their career in general radiographic imaging (x-ray) with opportunities to work in computed tomography (CT), angiography and mammography.

*We are the
only university
in Aotearoa that
offers an honours
degree in Medical
Imaging*

*QS World University Rankings 2025: 65th worldwide



“I have had an interest in medical imaging since I was young; I was quite unwell as a child and underwent several imaging examinations over the years. I ultimately made the decision to pursue Medical Imaging during my first year at university. I’d taken a physics course that consisted of a series of lectures focused on Medical Imaging.”

“I saw that Medical Imaging Technologists are in high demand in New Zealand and internationally. So having the opportunity to complete an honours year with a research project as part of the programme was enticing.”

“During academic blocks, your lecturers, classmates, and the Medical Imaging staff are there to support you. Whilst on clinical placements, your clinical coordinator, tutors, and qualified radiographers will help you reach your potential in the clinical setting. This degree offers a well-balanced and supportive environment which is beneficial for your growth as a student and individual.”

“I believe the knowledge and skills that I’ve learned from my degree will allow me to help empower and educate my family and those in the community. As a healthcare professional, I hope to advocate for prevention and screening programmes. I want to encourage people to be proactive in their health. I also want to improve their health literacy in the radiology context.”

“Having done my honours project on health literacy, I can apply my findings to my clinical practice to help further the advancement in Medical Imaging in Aotearoa.”

Fran Mula

Graduate: Bachelor of Medical Imaging (Honours)



[auckland.ac.nz/fmhs/
bmedimag-hons](https://auckland.ac.nz/fmhs/bmedimag-hons)

“The decision to pursue a career in health took root at a young age, mainly inspired by my maternal grandmother who served in Samoa as a public health and district nurse.

“Growing up in a Samoan family, my parents instilled the importance of education in me and my siblings, so they were very excited for me to pursue higher education. After spending my entire childhood and early adolescent years in Matautu, Samoa, I migrated to Auckland in 2012 to further my educational opportunities.

“In my first year out of high school, I undertook the Hikitia Te Ora - Certificate in Health Sciences,. This gave me great insight into the many different clinical and non-clinical health pathways and further honed my applied science knowledge and skills.

“I then studied the Bachelor of Health Sciences which enabled me to gain a broader understanding of health inequities, the social determinants of health and the effects of equitable health policies.

“MAPAS has been an integral part of my academic and cultural journey throughout my studies. I have been surrounded with like-minded individuals who share a common goal of improving the health of our communities while staying true to our cultural values.

“As medical students, we are in a very privileged position to see and care for patients at their most vulnerable. There have been many valuable learning experiences, from translating health information for Samoan patients to talking through medication regimens to improve medication compliance and understanding.”

Tarah Fepulea’i

Villages: Alamagoto, Matautu-uta and Moata’a (Upolu), Samoa

Graduate: Hikitia Te Ora – Certificate of Health Sciences, Bachelor of Health Sciences, Postgraduate Diploma in Health Sciences.

Graduate: Bachelor of Medicine and Bachelor of Surgery



Mātai Rongoā

Medicine

A rewarding, challenging and exciting career in medicine awaits you. Our Bachelor of Medicine and Bachelor of Surgery (MBChB) provides you with the medical knowledge, clinical experience and research skills for pursuing a vocation in any field of Medicine.

Bachelor of Medicine and Bachelor of Surgery

Quick facts

Full-time: 6 years

Points per degree: 720

Taught at: Grafton Campus and at clinical sites throughout the upper North Island (travel outside Auckland is mandatory.)

Application closing date: 1 July 2025

Classes start: 23 February 2026

Selection criteria are currently under review.

The information here is correct at the time of publication. Please monitor the University website and programme page for the most up-to-date entry requirements.

auckland.ac.nz/fmhs/mbchb

Highlights

- Strong emphasis on medical sciences and clinical, personal, professional and communication skills
- Engagement with Hauora Māori and population health issues, and learning by interacting with patients from diverse cultures
- Unrivalled access to clinical environments, thanks to our close relationship with a range of general practices and Te Whatu Ora – Health New Zealand
- A commitment to rural/regional and community-based health through our network of clinical campuses and sites in the middle and upper North Island
- Four Regional Rural year-long cohort options in Year 5, as well as rural experience in other years
- A faculty with an international reputation for research and innovation
- Accreditation by the Australian Medical Council on behalf of the Medical Council of New Zealand



What you'll be studying

You will study Medicine in five broad domains: Applied Science for Medicine, Clinical and Communication Skills, Personal and Professional Skills, Hauora Māori, and Population Health.

In the clinical years of the programme, you will get hands-on experience with full-time placements in various medical disciplines at different clinical and community sites.

This provides valuable experience in hospital wards, outpatient clinics, general practice and the community, where you will gain experience with a wide range of health problems.

Where can it lead?

Those who complete the Medical Programme are eligible to apply for provisional registration with the Medical Council of New Zealand as a doctor. You then need to complete two years of pre-vocational training. Our degree is also recognised for registration in a number of other countries.

Once you have gained general registration, you can choose further specialist training in a range of disciplines such as General Practice, Emergency Medicine, Medical Specialties, Surgery, Psychiatry, Paediatrics, Geriatric Medicine, Obstetrics and Gynaecology, Medical Research and more.

Further study

If you are interested in research, you can defer your clinical MBChB studies any time after completing Year 3 and undertake a BMedSc(Hons), taking a year to pursue a supervised research project. We also offer a wide range of postgraduate programmes for doctors wishing to further their interests, up to Doctor of Medical Sciences and PhD.

The MBChB provides the opportunity to undertake a regional rural year-long placement

“Leaving school not knowing what to do is a hard position to be in. After two years of trying to figure out what I wanted to do, I was even more lost than when I started. I decided to make a checklist of all the things that I wanted in a career, and I would ultimately commit to the thing that ticked the most boxes. Optometry ticked all of these things and more, so I decided to take the leap.”

“I love how hands-on and involved the programme is in its clinical years. The highlight of my study was seeing my very first patient. It was such a rewarding moment being able to translate all the things that we studied to be able to help the person in front of me.”

“One of the best things about being a student in Grafton is the amazing people you meet during your studies. Everyone knows each other (or at least knows of each other), and by the end of your studies, everyone in your cohort is your second family. It’s really cool and something pretty special.”

“Like any degree, you may not know it’s right for you until you take a plunge and give it a go. However, if you’re interested in technology and biology, and you want to be in the business of helping people, optometry is a career path that you should seriously consider.”

Nicholas Ibrahim

Graduate: Bachelor of Optometry



**The
University of
Auckland offers
New Zealand’s
only Optometry
degree**

Mātai Whatu, Pūtaiao Kitea

Optometry and Vision Science

Our Bachelor of Optometry (BOptom) programme covers both Clinical Optometry and Vision Science. It includes the study of basic physical and life sciences as they relate to the visual system. You will also gain extensive knowledge of optics, the anatomy and physiology of vision, ocular pharmacology, pathology, therapeutics, and immunology.

Bachelor of Optometry

Quick facts

Full-time: 5 years

Points per degree: 600

Taught at: Primarily at Grafton Campus, with placements at external locations as required

Application closing date: 1 July 2025

Classes start: 2 March 2026

Selection criteria are currently under review. The information here is correct at the time of publication. Please monitor the University website and programme page for the most up-to-date entry requirements.

auckland.ac.nz/fmhs/boptom



Highlights

- New Zealand's only Optometry degree and one of only eight Australasian degrees accredited by the Optometry Council of Australia and New Zealand
- Accreditation as a registered optometrist, able to diagnose and treat eye diseases in New Zealand and Australia
- Clinical and business skill development to help you manage your own practice or to work in the public health sector
- The opportunity to complete your degree with honours
- Opportunities to develop communication, empathy and problem-solving skills, particularly with children, the elderly and the partially sighted

What you'll be studying

In our Optometry programme, you will take a mixture of courses in applicable life science, vision science, population health, and basic optometric sciences and practice, as well as exploring various aspects of clinical optometry.

You will learn about diseases of the eye, their treatment, contact lens practice, advanced clinical optometry, and optometry for special populations. You will also undertake a research project and gain practical experience in examining and treating patients in our public clinic and during external placements.

Scholarships

For information about prizes and scholarships, including financial support for students enrolling by way of the Māori and Pacific Admissions Scheme (MAPAS), please search for 'Optometry' on our Scholarships webpages.

auckland.ac.nz/scholarships

Where can it lead?

The majority of optometrists enter private practice, which offers regular hours and the freedom to choose where to live and work. Optometrists can also practise in hospitals and clinics, or work in industry and research.

Further study

The optometry profession needs practitioners with research skills and experience. The main programmes are the Postgraduate Diploma in Health Sciences (PGDipHSc), Master of Health Sciences (MHSc) and the Doctor of Philosophy (PhD). If you have been awarded an Optometry degree with honours from the University of Auckland, the MHSc can be completed in one year of full-time study.

Mātai Whare Rongoā

Pharmacy

There's so much more to pharmacy than donning a white coat and counting pills. Pharmacists are experts in the safe and effective use of medicines. They fulfill a multitude of roles across the healthcare sector. Our Bachelor of Pharmacy (BPharm) prepares you to work as part of healthcare teams in supporting the health of people and communities. You'll develop the patient assessment, clinical and professional skills necessary for effective interactions with other health professionals, patients and the public.

Bachelor of Pharmacy

Quick facts

Full-time: 4 years

Points per degree: 480

Taught at: Grafton Campus (with clinical placements in Auckland and elsewhere in New Zealand)

Application closing date: 1 July 2025

Classes start: 2 March 2026

Selection criteria are currently under review. The information here is correct at the time of publication. Please monitor the University website and programme page for the most up-to-date entry requirements.

auckland.ac.nz/fmhs/bpharm

Highlights

- An integrated, experience-based programme developed with leading pharmacists and other health providers
- An emphasis on critical thinking, problem solving, and using research evidence to inform clinical decision making
- Ten weeks of real-world practice, learning in placements across the programme in community and/or hospital pharmacies and other health settings
- Simulations, labs and workshops in our model-pharmacy teaching suite and world-class pharmaceutical sciences laboratories

What you'll be studying

Our pharmacy programme includes a range of topics concerning medicines and health – and puts patients at the heart of your learning. You will study how new medicines are developed and designed, how medicines work, which medical conditions they treat, and how pharmacists help people to use medicines safely and effectively.

Throughout the programme, your learning will incorporate aspects of population health, social science, pharmacology, pharmacy practice, pharmacotherapy and pharmaceutical science.

You will learn through lectures, online and interactive media, laboratory classes, clinical case workshops, tutorials and simulations. You will also gain practical experience during placements. In addition, the final year of the BPharm includes group-based research inquiry work and a focus on applying evidence-based practice to clinical cases.

Scholarships

He Rau Aroha Pharmacy Student Scholarship

The Faculty of Medical and Health Sciences offers He Rau Aroha Scholarship for the Bachelor of Pharmacy – up to \$10,000 annually for up to two students enrolling by way of the Māori and Pacific Admissions Scheme (MAPAS).

Hiwinui Heke Māori Pharmacy Student Scholarship

Offered by PHARMAC in partnership with the Māori Pharmacists' Association (MPA) Ngā Kaitiaki o Te Puna Rongoā o Aotearoa to support the education of Māori students studying toward their Bachelor of Pharmacy degree and to promote pharmacy as a career.

Where can it lead?

In Aotearoa New Zealand, the pathway to becoming a registered pharmacist comprises both the successful completion of a Bachelor of Pharmacy degree and a one-year paid internship in an approved pharmacy setting outside the university after graduation.

Potential careers include community pharmacist, hospital pharmacist, health sector manager, pharmaceutical researcher, pharmaceutical writer, medicines quality control pharmacist, medicines regulator, and prescribing adviser, to name a few.

Pharmacy as a profession continues to evolve, and pharmacists now utilise their patient-centred skills to provide immunisations, health checks and monitoring of long-term conditions. Pharmacists deliver enhanced medicine services in collaboration with other members of healthcare teams. Pharmacists also work in a range of health-based industries related to the manufacturing, prescribing and provision of medicines, as well as industries such as medical publishing and pharmaceutical marketing.

Further study

Bachelor of Pharmacy (Honours)

In the final year of the programme there are up to fifteen competitive-entry places available in the Honours programme pathway of the BPharm. If selected, during your final year of study you will work with a supervisor to plan and conduct an independent piece of original research in clinical pharmacy, pharmacy practice, or pharmaceutical laboratory-based projects. Being part of the Honours pathway will help you consolidate your academic skills and disseminate your research to the wider community.



Experience hands-on learning in a diverse set of clinical pharmacy and community health settings

"I am a half-Tongan and half-Niuean who grew up in Glen Innes, Auckland. Since Year 12, I was fixated on pursuing Pharmacy as a future career as it looked cool to me."

"I liked that Pharmacy was a four-year degree that would allow me to continue playing rugby to progress as far as I could to try and crack professional."

"MAPAS has significantly helped me throughout my University journey, both academically and personally. They provided tutorials, study spaces, pastoral care and regular one-to-one meetings with a supervisor. MAPAS also ensured dedicated spots in clinical programmes and offered scholarships, which were very helpful."

"The School of Pharmacy and MAPAS genuinely supported me throughout my studies, always showing care and flexibility whenever I faced academic or non-academic challenges."

"I joined the Auckland Pharmacy Students Association (APSA), and in my last year, I was one of two MAPAS representatives on the APSA student committee. Being a MAPAS representative and part of APSA allowed me to meet new people, make friends and create memorable experiences, making my University experience enjoyable."

"The Bachelor of Pharmacy has prepared me well for the healthcare workforce through theory and practical experiences. I've come to appreciate this underrated yet crucial profession. Pharmacy is more than just preparing people's medications. It encompasses a wide variety of services such as vaccinations and international normalised ratio blood testing that often go unnoticed by the public but are essential for people's health."

Sionekau Lokeni

Villages: Avatele and Mutalau, Niue Hoi, Tatakamotonga (Tongatapu) and 'O'ua (Vava'u), Tonga

Graduate: Bachelor of Pharmacy

Pūtaiao Koiora Rongoā

Biomedical Science

If scientific fields such as cancer biology, immunology, neuroscience, pharmacology or physiology spark your interest, take a closer look at a Bachelor of Science (BSc) Biomedical Science specialisation or majors in Pharmacology and Physiology.

Bachelor of Science Biomedical Science Specialisation

Quick facts

Full-time: 3 years

Points per degree: 360

Taught at: Grafton Campus and City Campus

Application closing date: 8 December 2025

Classes start: 2 March 2026

The structure of the BSc programme and entry into Medicine, Medical Imaging, Optometry or Pharmacy programmes are changing. Please monitor the University website and programme page for the most up to date details.

auckland.ac.nz/science/biomedical-science

Highlights

- An inter-disciplinary programme, allowing access to both Medical Science and Biological Science expertise.
 - A flexible programme with a wide range of contemporary biomedical topics tailored to your interests and passions
 - An exciting learning environment fostered by staff who are global leaders in their research field
 - A focus on the science behind human health and the development of health interventions.
 - A Year 1 entry pathway into clinical programmes, including Medical Imaging (Honours), Medicine, Pharmacy, and Optometry
 - Our programme includes a Waipapa Taumata Rau core course that should be completed in your first year. Delivered by the Faculty of Science it focuses on core knowledge relevant to the faculty, the significance of place-based knowledge, and Te Tiriti o Waitangi
- auckland.ac.nz/WTR-course

What you'll be studying

The Biomedical Science programme is designed for students with an interest in the emerging areas of biomedical science and is jointly taught by the Faculty of Medical and Health Sciences and the Faculty of Science.

You can opt to keep your Biomedical Science specialisation general, or you can choose one of the following themes:

- Anatomical Imaging Science
- Cancer Biology and Therapeutics
- Cardiovascular Biology
- Cellular and Molecular Biomedicine
- Genetics
- Infection and Immunity
- Neuroscience
- Nutrition and Metabolism
- Reproduction and Development

In your final year you will complete a capstone course, BIOMED 399, where you'll reflect on your Biomedical Science knowledge and develop your critical thinking and science communication skills. You will debate contemporary issues and consider wider societal dimensions of science, such as human and animal ethics, Māori and Pacific health advancement, and public health relevance.

Where can it lead?

Biomedical Science equips students for a wide range of opportunities in biotechnology or pharmaceutical companies, science communications or media, universities or research institutes, education and healthcare. For example, you may find work as a research assistant at a biotechnology company or as a science communicator for a media outlet.

Many honours graduates in Biomedical Science move on to careers as research leaders after further graduate training.

BSc Pharmacology and Physiology majors

Undergraduate study in Pharmacology and Physiology is shared between the Faculty of Science and the Faculty of Medical and Health Sciences, with classes held in both.

Bachelor of Science (BSc) majoring in Pharmacology

Pharmacology examines how drug structure and concentration influence effect at a biological target, and how the concentrations in the body change over time. Pharmacologists therefore need to understand the biological molecules that facilitate these functions and how they can impact disease.

As a pharmacology student, during your first two years you will study Biology, Chemistry, Biochemistry, Physiology and Pathology and one Pharmacology course. The third year involves courses in drug design and action, drug clearance and safety, and the use of drugs to target specific diseases. The fourth course, PHARMCOL 399, is a capstone course designed to apply and enhance your integrated learning from the other three courses to understand the safe and effective use of medicines.

Bachelor of Science (BSc) majoring in Physiology

Physiology is the study of how living organisms function from the cellular to whole-body level and is a cornerstone subject of modern medicine.

Understanding how organisms work helps us to understand what goes wrong in disease and provides a rational scientific basis for its treatment.



A flexible programme with a wide range of contemporary biomedical subjects tailored to your interests and passions

“My parents have always been the primary push for my education and made the selfless move from Samoa to New Zealand so I could complete secondary schooling. In addition to the love and support from my family, MAPAS has been instrumental and so important in my university journey. Academic support, in the form of tutorials, study spaces, academic advice and advocacy, was crucial to reaching the finish line.”

“My incredible Student Support Adviser will always be special to me as someone who listened when I needed a sounding board, advocated when I needed support, and encouraged me when a test grade was disappointing.”

“I really could not have completed my university journey without this support from MAPAS. The pastoral care and cultural support MAPAS provided were invaluable and helped to shape my understanding of myself during university.”

“My BSc degree was the stepping stone I needed to join the Medical programme and eventually contribute to the health workforce as a doctor. Working in this space allows me to advocate for Pasifika health, providing unique but necessary insights as a Pasifika doctor caring for Pasifika patients, advocating where necessary for equitable health outcomes.”

Natassia Lily Peters-Raea

Villages: Alafua, Pesega and Vailoa (Samoa)

Graduate: Bachelor of Science in Biomedical Science

Graduate: Bachelor of Medicine and Bachelor of Surgery

 auckland.ac.nz/science/biomedical-science

The Department of Physiology offers world-class research-inspired teaching in areas like cardiovascular, respiratory, renal, vision and hearing, neuroscience, fetal and neonatal, cellular and molecular physiology, and endocrinology, which connects basic biological principles with biomedical, bioengineering and clinical fields. Many of our graduates take up diverse opportunities in research, clinical medicine or industry.

As a physiology student, you will take courses in Biological Sciences, Chemistry, Medical Science, Physics and Statistics to give you a solid quantitative grounding and to encourage critical thinking and science innovation.

As part of your physiology major you'll complete a capstone course, PHYSIOL 399, where you'll demonstrate your knowledge and skills through the design of a scientific research project. You will explore the role of science and scientists in society, ethics, science communication, and commitment to Māori and Pacific health advancement.

Further study

Postgraduate study options include a Bachelor of Biomedical Science (Honours) or postgraduate diplomas in either Biomedical Science or Health Sciences. These can be followed by masters or doctoral study.

Entry and programme requirements

To gain entry to degree programmes offered by the Faculty of Medical and Health Sciences, you must meet admission, programme and undergraduate English language requirements.

For more detailed information, please refer to auckland.ac.nz/entry-requirements

Admission requirements

Minimum age

To be eligible for admission to the University of Auckland, you normally must have reached the age of 16 years by 31 December in the year preceding that in which admission is sought.

English language requirements

You must meet certain standards of English language proficiency. See the University's Academic English Language Requirement.

auckland.ac.nz/aelr

New Zealand secondary school applicants

For entry based on a New Zealand secondary school qualification, you must have a University Entrance (UE) qualification based on National Certificate of Educational Achievement (NCEA), Cambridge International, International Baccalaureate (IB) or another recognised, equivalent qualification. You must also meet the admission requirements and be selected into your programme of study.

auckland.ac.nz/school-leaver-entry

Rank scores for all applicants

The table below shows the rank scores required for guaranteed entry in 2026, specific subject and credit requirements and any other requirements you need for admission into the University of Auckland's undergraduate programmes at the Faculty of Medical and Health Sciences. You are advised also to apply separately for any conjoint programme.

auckland.ac.nz/entry-requirements

Guaranteed admission

You will be offered a place if you meet the University Entrance standard, the rank score and the other requirements for your programme or programmes.

Undergraduate programme admission requirements 2026

Nursing and Health Sciences

	NCEA Level 3	Cambridge International	IB*
Bachelor of Health Sciences (BHSc)	250 with a minimum of 18 credits in one of Classical Studies, English, Geography, History, History of Art, Social Studies or Te Reo Māori (or Te Reo Rangatira) and a minimum of 18 credits in one of Biology, Chemistry or Physics	300 with one subject in one of Classical Studies, English, Geography, History and one of Biology, Chemistry or Physics at full A Level	33
Bachelor of Nursing (BNurs)	230 with a minimum of 18 credits in one of Classical Studies, English, Geography, History, History of Art, Social Studies or Te Reo Māori (or Te Reo Rangatira) and a minimum of 18 credits in one of Biology, Chemistry or Physics	280 with one subject in one of Classical Studies, English, Geography, History and one of Biology, Chemistry or Physics at full A Level	31
Bachelor of Science (BSc) in Biomedical Science	280	310	33

*International Baccalaureate (IB)

Medical Imaging (Honours), Medicine, Optometry and Pharmacy

To apply for our programmes in Medical Imaging (Honours), Medicine, Optometry or Pharmacy, you will need to apply in your first year of study by 1 July and complete a Multi Mini Interview (MMI).

Selection criteria are currently under review. The information here is correct at the time of publication. Please monitor the University website and programme page for the most up-to-date entry requirements.

Admission schemes

Māori and Pacific Admission Scheme (MAPAS)

Our Māori and Pacific Admission Scheme provides admission, academic and pastoral support for Māori and Indigenous Pacific students. This scheme is an integral part of Vision 20:20 – a faculty initiative to increase the number of Māori and Pacific professionals in the health workforce.

Applicants with Māori and/or Indigenous Pacific ancestry who are interested in applying should contact the faculty for advice and guidance on which course of study and entry scheme may be their best option. All students applying under MAPAS are required to submit a MAPAS Supporting Information Form (MH04) in addition to their formal application to the University and attend a MAPAS General or Specialty Interview.

auckland.ac.nz/fmhs/mapas

Regional Rural Admission Scheme (RRAS)

Through our Regional Rural Admission Scheme we want to encourage future students to train and return to their rural or regional areas to work where they can use their education and skills. We offer places in the following undergraduate programmes for students of regional or rural origin to ensure equitable access:

- Bachelor of Medicine and Bachelor of Surgery
- Bachelor of Optometry
- Bachelor of Medical Imaging (Hons)
- Bachelor of Pharmacy

You qualify under RRAS if you meet one of the following criteria:

1. Five years or more of primary education (Years 1-8) spent in a school within a regional/rural area,
- or
2. Three years or more of secondary education (Years 9-13) spent in a school within a regional/rural area

auckland.ac.nz/fmhs/rras

Undergraduate Targeted Admission Schemes (UTAS)

UTAS are the University's Undergraduate Targeted Admission Schemes. They are part of our commitment to providing inclusive and equitable learning opportunities.

UTAS reserve a number of places in our undergraduate programmes for applicants who have met the University Entrance standard but have not met the guaranteed entry score for the programme of their choice. If you're a student with a disability, or you're from a refugee or constrained economic background you may be eligible for inclusion in a targeted admission scheme.

auckland.ac.nz/utas



How to apply

So, you've made your decision on what you want to study, and now it's time to apply.
What do you need to do?

First you need to apply

Go online and apply for admission. If you haven't already, you'll be asked to sign up for a new account. It's easy, and you'll soon be underway in making your application. auckland.ac.nz/apply

Next you will receive an acknowledgement email asking you to provide supporting documents (and in some cases to complete other requirements*) before your application can be assessed.

Remember, you can apply for more than one programme. We will assess your application, and you can check your application status online at any time.

If your application is successful, we'll email you an offer with instructions on how to accept it.

To accept or decline your offer, log onto auckland.ac.nz/apply

Next you need to enrol

Once you've accepted an offer of a place in a programme, you can enrol in your courses. If you need some help with the enrolment process, visit auckland.ac.nz/enrolment

Tuition fees

Next you need to make sure you pay your fees! Visit our website to learn more about financing your study. auckland.ac.nz/fees

Fees free study

If you're starting tertiary study for the first time, you may be eligible for one year of fees-free study. feesfree.govt.nz

Need help?

At any point in the process you can find answers to your questions 24/7 at ask.auckland.ac.nz. Or there's someone who can help during business hours at **0800 61 62 63** or at auckland.ac.nz/askus

Scholarships

A scholarship can really help you with the cost of study while you adjust to a whole new exciting phase in your life. Each year the University of Auckland gives out scholarships and prizes worth more than \$85 million to thousands of students just like you.

Visit our website for the full list of scholarships offered at the Faculty of Medical and Health Sciences.

auckland.ac.nz/fmhs/scholarships

The application and enrolment process

1

Apply (online)

2

Submit all requested information and attend interview/audition if requested

3

Receive offer of place in programme

4

Accept offer of place in programme (and decline any unwanted offers)

5

Enrol in courses

6

Pay fees

*For some programmes, you may be required to submit supplementary information (eg, a portfolio of work, referee reports, an online form) or to attend an interview/audition.

Dates to remember

Closing dates for applications for admission in 2026

1 July 2025
Medical Imaging (Honours) Medicine Optometry Pharmacy
8 December 2025
Health Sciences Nursing Hikitia Te Ora – Certificate in Health Sciences Biomedical Science

Academic year 2026*	
Summer School and Summer Start – 2026	
Lectures begin	Monday 5 January
Auckland Anniversary Day	Monday 26 January
Waitangi Day holiday	Friday 6 February
Lectures end	Friday 13 February
Study break/exams	Study break: Saturday 14 February Exams: Monday 16 – Wednesday 18 February
Summer programmes end	Wednesday 18 February
Semester One – 2026	
Orientation Week	Monday 23 – Friday 27 February
Semester One begins	Monday 2 March**
Mid-semester/Easter break	Friday 3 – Friday 17 April
ANZAC Day	Monday 27 April
Lectures end	Friday 5 June
King's Birthday	Monday 1 June
Study break/exams	Study break: Monday 8 – Wednesday 10 June Exams: Thursday 11 – Monday 29 June
Semester One ends	Monday 29 June
Inter-semester/Matariki break	Tuesday 30 June – Friday 18 July
Semester Two – 2026	
Orientation Week	Monday 13 – Friday 17 July
Semester Two begins	Monday 20 July
Mid-semester break	Monday 31 August – Friday 11 September
Lectures end	Friday 23 October
Labour Day	Monday 26 October
Study break/exams	Study break: Tuesday 27 – Wednesday 28 October Exams: Thursday 29 October – Monday 16 November
Semester Two ends	Monday 16 November

*Start/finish dates vary for some programmes.

**Please check the University website and programme page for start dates for MBChB and CerTHSc

Mānawa Mai Info Evening and Open Day 2025

Open Day is all about experiencing our University. So haramai! Meet our awesome staff and students, get hands on with our interactive activities and experience lectures. Open Day is a lot like student life itself. It's also a chance to take a look at all your study options.

Join us online at **Info Evening** to learn more about the huge range of programmes we have on offer. You'll hear from our teaching staff about what you can expect in your first year and find out everything you need to know about the application process.

Visit us online for the latest information, including dates.

auckland.ac.nz/manawa-mai

Connect with us



Follow us on Instagram
[@fmhs_uoa](https://www.instagram.com/fmhs_uoa)



Like us on Facebook
facebook.com/fmhs.uoa



Watch us on YouTube
[FMHS UoA](https://www.youtube.com/FMHS_UoA)



LinkedIn
Faculty of Medical and Health Sciences
– University of Auckland



Privacy: The University of Auckland undertakes to collect, store, use and disclose your information in accordance with the provisions of the Privacy Act 2020. Further details of how the University handles your information are set out in a brochure available from your local Student Hub or you could phone us on 0800 61 62 63.

Disclaimer: Although every reasonable effort is made to ensure accuracy, the information in this document is provided only as a general guide for students and is subject to alteration. All students enrolling at the University of Auckland must consult its official document, the current Calendar of the University of Auckland, to ensure that they are aware of and comply with all regulations, requirements and policies. Publication date: January 2025

For personal assistance, please visit us at your local Student Hub, where students and whānau are welcome to talk with our expert advisers.

Enquiries: auckland.ac.nz/askus

Or phone: 0800 61 62 63

International: +64 9 373 7513

CITY CAMPUS

General Library, Building 109,
5 Alfred Street, Auckland

GRAFTON CAMPUS

Philson Library, Building 503
Level 1, 85 Park Rd, Grafton
(Entry via the Atrium)

SOUTH AUCKLAND CAMPUS

Te Papa Ako o Tai Tonga
6 Osterley Way, Manukau

WHANGĀREI CAMPUS

Te Papa Ako o Tai Tokerau: L Block,
13 Alexander Street,
Whangārei



UNIVERSITY OF
AUCKLAND
Waipapa Taumata Rau

auckland.ac.nz