

# Nursing

Postgraduate Handbook 2026



Waipapa  
Taumata Rau  
**University  
of Auckland**

# Nau mai, Haere mai ki Te Kura Tapuhi o Waipapa Taumata Rau

## A warm welcome to the School of Nursing

Haere mai Hakatau mai ra koutou ki Te Kura Tapuhi ki te hakanui atu o koutou matauranga mo nga mahi o nga neehi. Ko nga Kaiako e awhi e tautoko ia koutou mai te timatanga tae noa ki te whakamutunga i o koutou mahi ki Te Kura Tapuhi. Ko to matou hiahia kua eke koutou ki nga taumata mo te tangata mo a muri nei. No reira Huri noa Huri noa Tena tatou katoa.

Ngā mihi

We are so excited to welcome you to our School of Nursing whānau. The school is full of vibrant and dynamic people who are dedicated to your learning and growth. We are committed to providing a warm and welcoming environment for our students and staff. If there is anything we can do to help you get started on your postgraduate journey, please do not hesitate to ask. We are here to help you start your journey today, and will continue to support you to become the person you want to be tomorrow.

### **WHAEA ERANA POULSEN**

Ngāpuhi Nui Tonu, Ngāi Tūhoe,  
Tainui me Ngāti Porou  
Te Kura Tapuhi | School of Nursing  
Mātauranga Hauora |  
Faculty of Medical and Health Sciences  
Waipapa Taumata Rau | University of Auckland

### **PROFESSOR JULIA SLARK RN**

Urumatua o te Kura | Head of School  
Te Kura Tapuhi | School of Nursing  
Mātauranga Hauora |  
Faculty of Medical and Health Sciences  
Waipapa Taumata Rau | University of Auckland



*Front cover: Professor Julia Slark, Head of School of Nursing on the day of Julia's Inaugural Professorial Lecture.*

*Above: Whaea Erana Poulsen (Ngāpuhi Nui Tonu, Ngāi Tūhoe, Tainui, Ngāti Porou) and Professor Julia Slark at the School of Nursing.*

*Right: Stacey Marino, Iwi: Ngāti Tūwharetoa, Postgraduate Diploma in Health Sciences in Advanced Nursing*





# Contents

Our postgraduate programmes	4 – 5
Early postgraduate study	6
Masters study	7 – 8
Doctoral study	9
Course descriptions	10 – 13
Mental Health and Addiction	14 – 15
Child and Youth Health	16 – 17
Palliative Care	18
Educational pathway for Registered Nurse Designated prescriber	19
Educational pathway for Nurse Practitioner	20 – 21
How to apply	22 – 24
Helpful information	25
• Awards, scholarships and grants	
• External funding	
• Resources for Postgraduate Nursing students	
Course schedules 2026	27

**Our  
programmes  
have been developed  
to enhance nursing  
practice and focus on the  
improvement of patient  
outcomes and the  
health of all New  
Zealanders.**

**Find out more**  
[auckland.ac.nz/fmhs/son](https://auckland.ac.nz/fmhs/son)

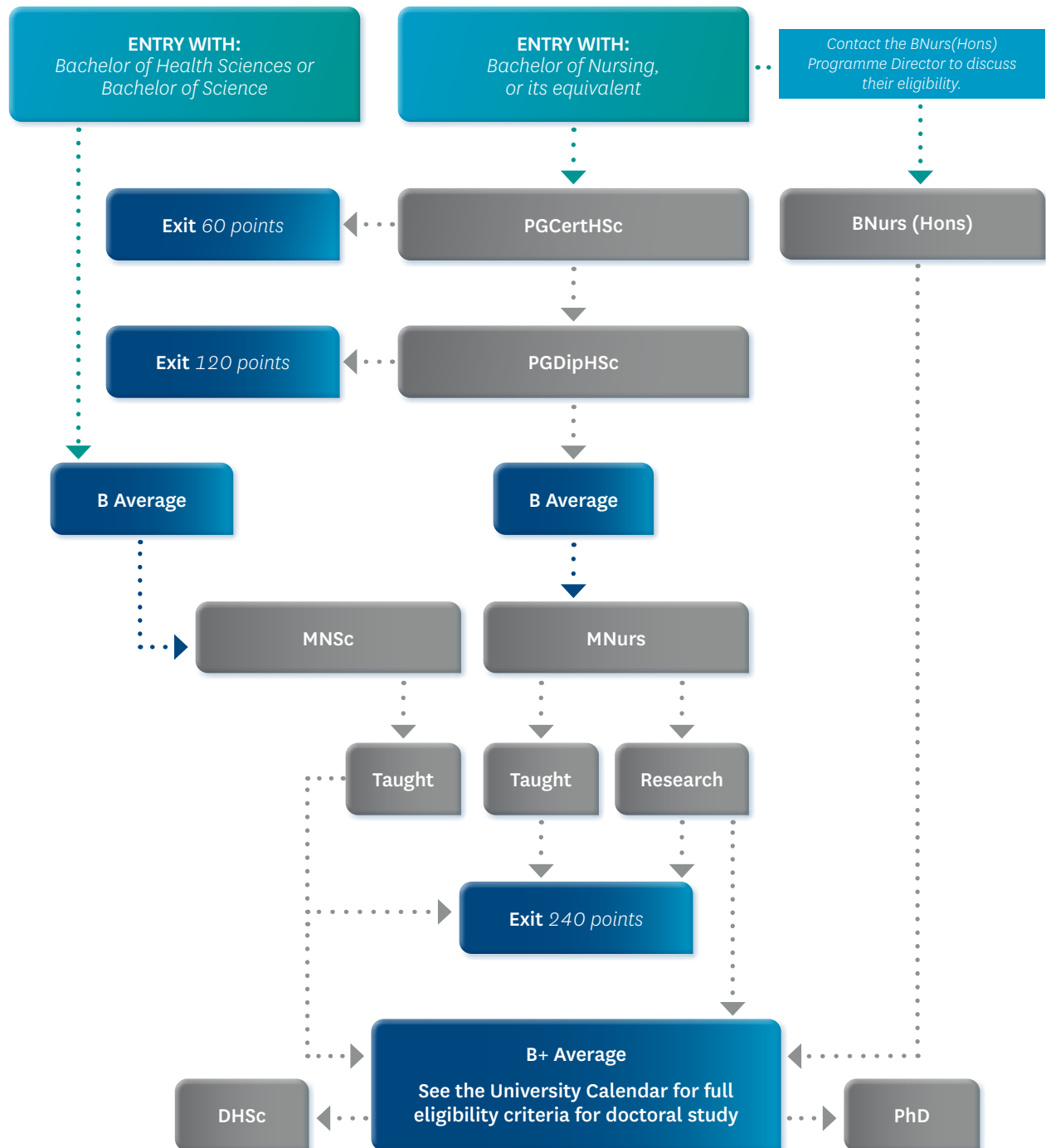
*Privacy: The University of Auckland undertakes to collect, store, use and disclose your information in accordance with the provisions of the Privacy Act 2020. Further details of how the University handles your information are set out in a brochure available from your local Student Hub or you could phone us on 0800 61 62 63.*

*Disclaimer: Although every reasonable effort is made to ensure accuracy, the information in this document is provided only as a general guide for students and is subject to alteration. All students enrolling at the University of Auckland must consult its official document, the current Calendar of the University of Auckland, to ensure that they are aware of and comply with all regulations, requirements and policies.*

*Publication date: June 2025*

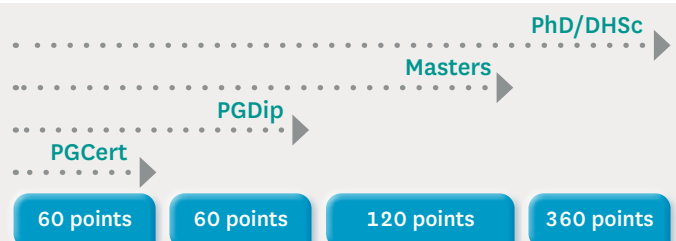
# Our postgraduate programmes

Postgraduate study enables you to deepen your understanding, develop specialist skills and knowledge, follow your passion for research, stand out in a competitive job market, or change careers. We offer a wide range of postgraduate nursing programmes to help you reach your goals. Below is a flow chart of possible pathways for your postgraduate nursing study.



## Master of Nursing (MNurs) eligibility

Note: If you are interested in the MNurs but do not have the required GPA (B average), please contact the School of Nursing to explore your options.  
[postgradnursing@auckland.ac.nz](mailto:postgradnursing@auckland.ac.nz)



## Entry and progression requirements

For entry into any postgraduate nursing programme, you must:

- have either completed an appropriate undergraduate degree or hold a professional nursing qualification
- hold nursing registration
- hold a current New Zealand practising certificate, and
- have recent clinical nursing experience.

Generally, initial enrolment is into Postgraduate Certificate in Health Sciences (PGCertHSc). On completion of the PGCertHSc, you may apply to have the certificate issued and graduate, or explore further study and enrol in the Postgraduate Diploma in Health Sciences (PGDipHSc). Upon completion of the PGDipHSc, you may apply to have the qualification awarded and graduate. If you meet the entry GPA (5.0/B average) for Masters study, you can apply for the MNurs.

## Completion times

Most of our postgraduate students complete their studies part-time due to work and other commitments. It is wise to take note of completion and progression requirement timeframes and seek advice from the School of Nursing to ensure you can meet the University regulatory requirements. If you have a need to complete your postgraduate study in a full-time capacity, please contact the School of Nursing.

## Credit points

At Waipapa Taumata Rau, University of Auckland, 120 credit points equates to a full-time academic year. One full-time semester is, therefore, 60 points. Postgraduate courses in the school are usually 30 points.

## Credit transfer

This information is for nurses who have undertaken postgraduate study at other universities, including NETP programmes, and wish to continue their studies at Waipapa Taumata Rau, University of Auckland.

Our current regulations state that:

- Credit from another institution can only be credited to a Masters or a postgraduate diploma (PGDip), not a postgraduate certificate (PGCert).
- Credit of 30 points from another institution can be transferred to a Masters or PGDip programme within three semesters of commencing the course relevant to the credit.
- Credit from a completed PGCert can be transferred into a PGDip within five years of completing the PGCert. If your PGCert is outside of this time frame, and you wish to pursue a masters degree, please contact the School of Nursing to discuss your options.
- If a student has completed either a 30 point course or a PGCert and wishes to transfer to Waipapa Taumata Rau, University of Auckland, they must contact our postgraduate academic advisers prior to applying to the University. This will ensure that they receive the best advice for their individual pathway of study.

## Grade point average

The following table can be used to guide the grade point average (GPA) calculation.

9	A+
8	A
7	A-
6	B+
5	B
4	B-
3	C+
2	C
1	C-
0	D+
0	D
0	D-
0	F

## The University Calendar

The most up-to-date regulations can be found in the University Calendar

[calendar.auckland.ac.nz](http://calendar.auckland.ac.nz)

## Course selection advice

Waipapa Taumata Rau, University of Auckland offers a range of courses tailored to meet the needs of a variety of disciplines within nursing. These can include research, leadership, education, mental health, paediatrics, older adult health, primary health care, specialty clinical courses, and courses tailored to the registered nurse designated prescribing and nurse practitioner training pathways. The School of Nursing provides a student-centric approach of course advice to facilitate course selection that meets the needs of the student's career goals and the populations they serve.

## Contact

[postgradnursing@auckland.ac.nz](mailto:postgradnursing@auckland.ac.nz)

To connect with an academic adviser from any of these areas, please indicate what type of course advice you are seeking when you email us.

For returning students, please include your Student ID number.

Qualification	Full-time	Part-time
Honours degree	No full time option available	4 semesters (2 years)
Postgraduate certificate	1 semester	4 semesters (2 years)
Postgraduate diploma	2 semesters (1 year)	8 semesters (4 years)
Postgraduate diploma (entered with credit)	1 semester	4 semesters (2 years)
Masters (research – all 120 & 90 point thesis or research portfolio)	2 semesters (1 year)	4 semesters (2 years) Study must be continuous
Masters (taught 120 point)	4 semesters (2 years)	8 semesters (4 years)
Master of Nursing Science (240 point)	4 semesters (2 years)	No part-time option
Doctor of Health Sciences	No full time option first 2 years. Thesis component can be completed 2 years full time.	4–6 years
Doctor of Philosophy	3–4 years	6–8 years



# Early postgraduate study

If you are new to postgraduate study, you may want to follow the pathway that most of our nursing students take – enrolling in a postgraduate certificate, followed by a postgraduate diploma. If you are eligible and wish to, you may consider progressing to a Master of Nursing.

Our PGCertHSc (Advanced Nursing, Mental Health Nursing), PGDipHSc (Advanced Nursing, Mental Health Nursing), and MNurs programmes are approved by with Te Kaunihera Tapuhi o Aotearoa, the Nursing Council of New Zealand as appropriate educational preparation for advanced nursing practice.

## Postgraduate Certificate in Health Sciences

### (PGCertHSc, 60 points)

The PGCertHSc allows students to start their postgraduate study with us from a wide range of courses found in this book.

#### Specialisations:

When applying for this programme, you can choose between these two specialisations:

- Advanced Nursing
- Mental Health Nursing

#### Entry requirements:

Registered nurse registration with Te Kaunihera Tapuhi o Aotearoa, the Nursing Council of New Zealand and a current practising certificate.

#### Structure/content:

60 points (from page 27)

#### Progression:

You may be awarded the qualification. You may also proceed to a PGDipHSc with credit, so long as it commences within five years of completing the PGCertHSc.

## Contact

[postgradnursing@auckland.ac.nz](mailto:postgradnursing@auckland.ac.nz)

## Postgraduate Diploma in Health Sciences

### (PGDipHSc, 120 points)

The PGDipHSc allows students to start, or continue their postgraduate study with us from a wide range of courses found in this book.

#### Specialisations:

When applying for this programme, you can choose between these two specialisations:

- Advanced Nursing
- Mental Health Nursing

#### Entry requirements:

Registered nurse registration with Te Kaunihera Tapuhi o Aotearoa, the Nursing Council of New Zealand, and a current practising certificate.

#### Structure/content:

120 points (from page 27). If you have completed a PGCert with credit, you can have the 60 points from it internally credited to the PGDip and will only have to complete a further 60 points.

#### Progression:

You may be awarded the qualification. You may also apply for a masters programme if you have attained a B average (GPA 5) or higher.

**Note:** If you are interested in the MNurs but do not have the required GPA (B average), please contact the School of Nursing to explore your options.

*Left: Rachel Lampkin, Professional Teaching Fellow, teaching postgraduate students.*

## Bachelor of Nursing (Honours)

### (BNurs(Hons), 120 points)

The Bachelor of Nursing (Honours) programme is for students who wish to pursue an academic career, and may be used to fast-track the student into doctoral study. This programme provides students with an in-depth understanding of undertaking research in the health sector.

#### Entry requirements:

Students are to contact the BNurs(Hons) Programme Director to discuss their eligibility.

#### Structure/content:

BNurs(Hons) is four semesters of continuous part-time study. Students must commence their programme in semester one.

#### Progression

There is potential to progress to doctoral study (the PhD or DHSc), see the University Calendar for eligibility criteria.

Semester 1
NURSING 746 – Evidence-based Practice and Implementation – Level 9 (30 points)
Semester 2
NURSING 782 – Research Methods in Nursing and Health – Level 9 (30 points)
Semester 3
HLTHSCI 715 – Research in Practice (30 points)
Semester 4
HLTHSCI 789 – Research Project – Level 9 (30 points)

## Contact

[j.robinson@auckland.ac.nz](mailto:j.robinson@auckland.ac.nz)

For further information on the BNurs(Hons), including eligibility, please contact the BNurs(Hons) programme director.



# Masters study

The MNurs will enable you to increase your knowledge in your chosen field, gain a professionally accredited qualification, and/or follow your passion for research while gaining an advanced qualification. We also offer the Master of Nursing Science, which is a pre-registration programme that enables non-registered nurses, with a relevant undergraduate degree, the opportunity to become a registered nurse.

Taught Masters (120 points) Select one of the following three options					
Taught option 1	Taught option 2	Taught option 3			
NURSING 795 A/B Dissertation Level 9 (60 points)	HLTHSCI 789 Research Project Level 9 (30 points)  <i>Students should complete NURSING 782 prior to enrolling in this course</i>	NURSING 701 Research Project Level 9 (30 points)  <i>NP pathway students only</i>			
		+ Select at least one of the following Level 9 courses			
	NURSING 782 Research Methods in Nursing and Health Level 9 (30 points)	NURSING 782 Research Methods in Nursing and Health Level 9 (30 points)	NURSING 746 Evidence based practice and Implementation Level 9 (30 points)	NURSING 785 Clinical Reasoning in Pharmacotherapeutics Level 9 (30 points) <i>Prescribing pathway students only</i>	NURSING 740 Nurse Practitioner Prescribing Practicum Level 9 (30 points) <i>NPTP students only</i>
+ 60 more points of taught courses					
Eight semesters, part-time study or four semesters, full-time study <i>60 points of the MNurs must be at level 9</i>					

Research Masters (120 points) Select one of the following three options		
Research option 1	Research option 2	Research option 3
<b>NURSING 798 A/B Research Portfolio</b> Level 9 (120 points) <sup>1</sup>	<b>NURSING 799 A/B Thesis</b> Level 9 (120 points) <sup>1</sup>	<b>NURSING782 Research Methods in Nursing and Health</b> Level 9 (30 points) + <b>NURSING 791 A/B Research Portfolio</b> Level 9 (90 points) <sup>1</sup>
<b>Four semesters, part-time continuous study or two semesters, full-time continuous study</b> <i><sup>1</sup>Need to have completed a research methods course prior to commencing</i>		

## Master of Nursing

### (MNurs, 120 points)

This programme is aimed at registered nurses seeking to advance their clinical knowledge and skills.

#### Entry requirements:

Students must hold current registration as a nurse in Aotearoa, New Zealand and have a B average (GPA 5) or higher in one of the following qualifications:

- Bachelor of Nursing (Honours)
- PGDipHSc specialisation in Advanced Nursing (or their equivalent)

#### Options:

Students can decide between the following two options:

- Research (120 points)
- Taught (120 points)

Note: If you are interested in the MNurs but do not have the required GPA (B average), please contact the School of Nursing to explore your options.

### Option 1: Master of Nursing (research)

#### Structure/content:

Research 120 points (study must be continuous).

- NURSING 799 A/B Thesis (120 points, must have completed an approved research methods course prior to entering the programme)

OR

- NURSING 798 A/B Research Portfolio (120 points, must have completed an approved research methods course prior to entering the programme)

OR

- NURSING 791 A/B Research Portfolio (90 points) + NURSING 782 Research Methods in Nursing and Health (30 points, or equivalent research course)

#### What does masters research involve?

For both the research portfolio and the thesis, you will be assisted by a supervisor from the School of Nursing.

#### What is a 90 point research portfolio?

A research portfolio represents a coherent, rigorous, research-based collection of linked scholarly work related to a specified area of specialisation or scope of practice. It will be about 30,000 words in length (including tables, figures and references). The portfolio is presented for examination at the completion of the work, in the same manner as a thesis. A research portfolio must address a clearly articulated research question and include a rationale for all elements of the portfolio.

The portfolio may include a critical review of literature, an audit of a taught course related to the area of study, or one or two small studies or clinical projects.

Normally the portfolio will require the collection of primary data through interviewing, survey, documents. A portfolio may include a rework of a conference presentation and/or paper prepared for publication.

### What is a 120 point masters thesis?

A 120 point thesis can be conducted over one academic year (full-time) or two years (part-time). It is recommended that students use the part-time option. Length will vary with the nature of the topic, but it is expected that most theses will be about 40,000 words (including tables, figures and references).

The learning outcome of a thesis is that the student demonstrates an ability to conduct research that makes an original contribution to knowledge.

The thesis should provide a coherent and competently organised document forming a conclusive piece of work. The thesis will include the rationale for the study, a review of the relevant literature, the research question, aim and objectives, methodology, findings and discussion. It will also include the study's implications and recommendations for theory and/or practice.

### Option 2: Master of Nursing (taught)

#### Structure/content:

Taught 120 points (study does not have to be continuous, but needs to be completed within the timeframes stipulated on page 5).

- NURSING 795 Dissertation (60 points)

AND

- 60 points from (page 27)

OR

30 points from either:

- NURSING 701 Research Project (30 points)
- HLTHSCI 789 Research Project (30 points)

AND

30 points from either:

- NURSING 785 Clinical Reasoning in Pharmacotherapeutics (30 points)
- NURSING 746 Evidence-based Practice and Implementation (30 points)
- NURSING 740 Nurse Practitioner Prescribing Practicum (30 points)
- NURSING 782 Research Methods in Nursing and Health (30 points)

AND

- 60 points (from page 27)

To be eligible to graduate with your MNurs, ensure that your taught masters degree includes a minimum of 60 points of Level 9 courses. There are three primary ways to achieve this, demonstrated in the picture on page 7.

If you are not completing NURSING 795 A/B (Dissertation), it becomes mandatory to include either NURSING 701 (Research Project) OR HLTHSCI 789 (Research Project) in your MNurs (taught) qualification.

## Master of Nursing Science

### (MNSc, 240 points)

This full-time two-year programme gives graduates with a relevant undergraduate degree the opportunity to complete the requirements to become a registered nurse in Aotearoa, New Zealand.

#### Entry requirements:

Students must have completed a relevant undergraduate degree (such as health sciences or science with some human science subjects, such as physiology and anatomy) with a B average (GPA 5) or higher.

Eligible applicants will also be required to attend a selection interview.

English language proficiency and fitness to practise requirements also apply.

## Contact

[postgradnursing@auckland.ac.nz](mailto:postgradnursing@auckland.ac.nz)

Please contact the School of Nursing to discuss your masters plan before applying for the programme.

### Semester 1

NURSING 787 Fundamentals of Nursing Care (30 points) and 224 clinical hours

NURSING 742 Biological Science for Practice (30 points)

### Semester 2

NURSPRAC 721 Integrative Nursing Practice (45 points) and 320 clinical hours

MAORITH 701 Foundations of Māori Health (15 points)

### Semester 3

NURSING 780 Mental Health and Addiction Nursing (30 points) and 240 clinical hours

NURSING 746 Evidence-based Practice and Implementation (30 points)

### Semester 4

NURSPRAC 722 Transition to Professional Nursing Practice (30 points) and 360 clinical hours

NURSING 789 Research Project (30 points)

*Below: John Tuoro (Ngāpuhi, Te Arawa), Professor Terryann Clark (Ngāpuhi) and Whaea Erana Poulsen (Ngāpuhi Nui Tonu, Ngāi Tūhoe, Tainui, Ngāti Porou) on the day of Terryann's Inaugural Professorial Lecture.*





# Doctoral study

There are many reasons that you might consider doing a doctoral degree. Ultimately, doing so means you will have expert-level knowledge in your chosen field and gives you the highest level of degree you can achieve. Doctoral study will allow you to undertake in-depth research and exploration in your chosen area.

A doctoral degree can broaden career opportunities, develop your critical thinking skills and sharpen your writing abilities. It can develop your confidence and ability to advocate for change, foster national and international collaboration within your area of expertise and help you learn new skills to pursue your aspirations.

## Doctor of Health Sciences

**(DHSc, 360 points)**

### Entry requirements:

The entry criteria for the DHSc are extensive. Please see the University Calendar for the full and most up-to-date regulations, which include a B+ (GPA 6) average in the student's most recent attempt at a relevant qualification, i.e. BNHons, masters in a relevant subject area.

### Structure/content:

This named doctorate will provide experienced health professionals and leaders working in diverse roles within the health sector with a pathway to a research-based higher degree. Students will address contemporary issues challenging the health sector, influencing local, national and potentially international health policy and practice.

The DHSc comprises a combination of taught courses (120 points) and a thesis (240 points) which will develop candidates' professional understanding and expertise in leadership, research implementation, evaluation and professional practice. The DHSc programme is designed for health professionals and senior leaders in healthcare in Aotearoa, New Zealand who want to continue working while they study.

## Doctor of Philosophy

**(PhD, 360 points)**

### Entry requirements:

The entry criteria for the PhD are extensive. Please see the University Calendar for the full and most up-to-date regulations, which include a B+ (GPA 6) average in the student's most recent attempt at a relevant qualification, i.e. BNHons, a masters degree in a relevant subject area.

### Structure/content:

The PhD is a well-recognised postgraduate research degree. PhD students are critical, curious and creative thinkers who undertake original research over at least three years.

Candidates will undertake independent and original research, supervised by academic experts and research leaders. During your doctoral studies, you will have opportunities to expand and develop your personal, professional and academic skills. Our doctoral candidates present their work at local and international conferences and are encouraged to network and collaborate with a wide range of experts in their research field.

You will undertake independent research and submit for examination a 360 point research thesis.

## Contact

[SON\\_Doctoraladvice@auckland.ac.nz](mailto:SON_Doctoraladvice@auckland.ac.nz)

Please contact the School of Nursing to discuss your doctoral plan before applying for the programme.

For more information:

**Doctor of Philosophy (PhD):**  
[auckland.ac.nz/phd](http://auckland.ac.nz/phd)

**Doctor of Health Sciences degree (DHSc)**  
[auckland.ac.nz/dhsc](http://auckland.ac.nz/dhsc)

Application Process

[auckland.ac.nz/doctoral-applications](http://auckland.ac.nz/doctoral-applications)

*Below: Michael Crossan (PhD Candidate), Jenny Sung (PhD Candidate), Louise Carrucan-Wood (PhD Graduated) and Dr Marea Topp at the November 2024 Graduation Ceremony.*



# Course descriptions

We have a wide variety of courses available to postgraduate students studying in Mātauranga Hauora, Faculty of Medical and Health Sciences. The NURSING and NURSPRAC (Nursing Practice) courses are facilitated by the School of Nursing. Below you'll find a list of our courses and an indication of what format they're available in – which region, online, dual or blended. An asterisk (\*) indicates the courses that need a concession. Our courses that have a focus on Mental Health and Addiction, Child and Youth Health and Palliative Care are found on pages 14, 16 and 18, respectively. You can also find the full schedule of our courses on page 27.

## **NURSING 701\*** 30 points

### **Research Project - Level 9**

#### **Semester One – Auckland, Semester Two – Auckland**

A personal scholarly exploration of an area of clinical nursing practice that reflects an understanding of research purpose and process. The project includes a critical and comprehensive review of relevant literature which results in new insights and understandings and considers how the application of these might affect existing service delivery or clinical practice models.

## **NURSING 732** 30 points

### **Leading and Managing Changes in Healthcare**

#### **Semester Two – Auckland, Northland**

Theoretical and practice principles of leadership and management in the context of healthcare organisations. Utilises an action-based learning model, mentorship and project work.

## **NURSING 735** 30 points

### **Clinical Education Practicum**

#### **Semester Two – Online**

Application and critical analysis of educational theories and concepts in a clinical learning environment. Utilises an action-based learning model and project work.

## **NURSING 740\*** 30 points

### **Nurse Practitioner Prescribing Practicum – Level 9 (NPTP)**

#### **Semester Two – Auckland**

Clinical practicum facilitating mastery of the Nursing Council of New Zealand nurse practitioner (NP) competencies for autonomous clinical practice in the nurse practitioner scope of practice. Critically analyse clinical cases and develop evidence-informed and innovative solutions through expert consultation and primary literature review. Students will prepare a portfolio demonstrating expert autonomous clinical practice for complex medical and nursing problems.

**Prerequisite:** NURSING 743 and approval of the Course Director

## **NURSING 741** 30 points

### **Education for Clinical Practice**

#### **Semester One – Auckland (blended)**

Professional learning is essential to enable healthcare professionals to function competently in the complex world of clinical practice. Healthcare professionals are required to become actively involved in teaching colleagues involved in healthcare and patients. Effective clinical teaching and learning is enabled by laying a foundation in educational theory and practice.

## **NURSING 742** 30 points

### **Biological Science for Practice**

#### **Semester One – Online**

#### **Semester Two – Online**

Focuses on common pathologies acknowledging the New Zealand Health Strategy, giving particular attention to areas where health promotion, preventative care, chronic disease management and cost impact for New Zealand.

## **NURSING 743\*** 30 points

### **Nurse Practitioner Advanced Practicum (NPTP)**

#### **Semester One – Auckland**

Synthesises advanced clinical decision-making within the nurse practitioner competency framework and prepares for autonomous clinical practice.

**Prerequisite:** NURSING 785 and approval of the Course Director

## **NURSING 744** 30 points

### **Critical Care Specialty Nursing Practicum**

#### **Semester Two – Auckland**

Gives critical care nurses the opportunity to extend their clinical skills and practice knowledge and to advance clinical decision-making by utilising a range of guided learning experiences. The focus is on continued development of clinical expertise, using a practice development approach emphasising person-centred, evidence-based practice, and critical thinking practice to improve health outcomes.

## **NURSING 745** 30 points

### **Principles of Medication Management**

#### **Semester One – Auckland or online (dual delivery)**

#### **Semester Two – Auckland or online (dual delivery)**

Focuses on the principles and practice of medication management to improve and extend the knowledge and skills of registered nurses in clinical specialty roles and prepare them for delegated prescribing roles in partnership with clients and collaborating with medical colleagues and the health care team. It is not the intention of this course to prepare nurses for authorised prescribing (nurse practitioner).

## **NURSING 746** 30 points

### **Evidence-based Practice and Implementation – Level 9**

#### **Semester One – Auckland, Semester Two – Auckland**

Considers the types of evidence that inform nursing practice and implementation, and examines barriers and enablers to the application of evidence to practice. Provides students with the tools to locate and appraise evidence and requires the student to engage in research activities resulting in a substantial research essay.

*\*Concession required*

*N.B. A prerequisite is a course or requirement that needs to be completed in order to be eligible for a course.*

## NURSING 749 30 points

### Whānau Ora Tahī

#### Semester One – Northland

The concept of Whānau Ora is to achieve maximum health and well-being for whānau. This course extends nurses' knowledge to demonstrate an understanding of Whānau Ora in nursing praxis. Through guided learning experiences, clinical and academic support, students will self-reflect on nursing praxis and explore equity and social justice in the context of Te Tiriti o Waitangi.

## NURSING 773 30 points

### (Adult Health stream)

#### Advanced Assessment and Clinical Reasoning

##### Semester One – Auckland, BOP, Northland, Taranaki

##### Semester Two – Auckland, Lakes, Northland, Taranaki

Nurses make a variety of clinical decisions in their daily practice. Advanced nursing practice requires skilled health examination, consideration of differential diagnoses and evidence based diagnostic reasoning. This complex cognitive process is developed in relation to skills and knowledge required for sound clinical reasoning

*Note: Child and Young Person Health stream is described on page 16*

## NURSING 775 30 points

### Leadership and Management for Quality Health care

#### Semester One – Auckland, Northland

Builds management and leadership knowledge, competence and business acumen through project-based learning. Focuses on critical thinking, quality service delivery and improvements and maximises organisational performance and change management.

## NURSING 782 30 points

### Research Methods in Nursing and Health – Level 9

#### Semester One – Auckland, Semester Two – Auckland

Explores the philosophical underpinnings of research methodologies and assists students to understand the major distinctions between quantitative and qualitative approaches. Students will critique research studies and apply research findings to practice. They will gain a practical appreciation of research ethics. By the end of the course, students will be able to apply their learning to the development of a basic research proposal.

## NURSING 783 30 points

### Special Topic: Pae Ora

#### Semester Two – Northland

Pae Ora encourages the wider health sector to work collaboratively, to provide high-quality and effective health and disability services at all levels. This course has been designed for those who wish to develop and consolidate a sophisticated understanding of the principles of Pae Ora (Mauri Ora – healthy individuals; Whānau Ora – healthy families; Wai Ora – healthy environments) in their practice area.

## NURSING 784\* 30 points

### Advanced Emergency Nursing Practicum

#### Semester Two – Auckland

Specialty emergency nurses provide advanced nursing care and need expertise in assessment, diagnostic processes and therapeutic decision-making. Advanced assessment skills along with injury and condition-specific management models are taught with a focus on clinical decision-making for clients in emergency and accident and medical clinic settings. Designed to refine advanced emergency nursing skills for nurses working in specialty emergency nursing roles.

**Pre-requisite:** NURSING 773 or equivalent and practising in an advanced nursing role

## NURSING 785\* 30 points

### Clinical Reasoning in Pharmacotherapeutics – Level 9

#### Semester One – Auckland

#### Semester Two – Auckland (blended delivery Semester Two only)

Builds on prior knowledge to establish an advanced understanding of pharmacotherapeutics and the application of the principles of pharmacokinetics, pharmacodynamics to prescribing practice in advanced practice roles; and develops nursing skills in clinical reasoning for safe and effective prescribing.

**Prerequisite:** NURSING 742, NURSING 773 (or NURSING 770/ NURSPRAC 720)

## NURSING 791 A/B 90 points

### Research Portfolio – Level 9

Supervised research that represents the personal scholarly work of a student based on a coherent area of inquiry. Culminates in a conclusive piece of work related to a specific area of specialisation or scope of practice.

## NURSING 795 A/B 60 points

### Dissertation – Level 9

#### Semester One – (A) followed by Semester Two – (B)

The 60-point dissertation (15,000 to 20,000 words) is part-time over two semesters and can take the form of a literature review, secondary data analysis or small project. Students work with a supervisor to complete the dissertation and attend three study days per semester. The goal is to successfully submit an externally assessed.

## NURSING 798 A/B 120 points

### Research Portfolio – Level 9

#### Semester One – (A) followed by Semester Two – (B)

Supervised research that represents the personal scholarly work of a student based on a coherent area of inquiry. Culminates in a conclusive piece of work related to a specific area of specialisation or scope of practice.

## NURSING 799 A/B 120 points

### Thesis – Level 9

## NURSPRAC 701\* 30 points

### Cardiac Specialty Nursing

#### Semester One – Auckland

Draws on evidence from biomedical and social science research to equip nurses for the care and treatment of cardiac patients. Students will be expected to integrate evidence from a range of sources and apply this to the practice of cardiac nursing.

## NURSPRAC 702\* 30 points

### Critical Care Specialty Nursing

#### Semester One – Auckland

Draws on evidence from biomedical and social science research to equip nurses for the care and treatment of critical care patients. Students will be expected to integrate evidence from a range of sources and apply this to the practice of critical care nursing.

Please note: all our courses are run subject to sufficient course enrolments. Before booking flights or accommodation, please contact the School to ensure the course is still running.

*\*Concession required*

*N.B. A prerequisite is a course or requirement that needs to be completed in order to be eligible for a course.*



**NURSPRAC 704\*** 30 points**Cancer Specialty Nursing****Semester Two – Auckland**

Draws on evidence from biomedical and social science research to equip nurses for the care and treatment of patients with cancer. Students will be expected to integrate evidence from a range of sources and apply this to the practice of cancer nursing.

**NURSPRAC 707\*** 30 points**Registered Nurse First Surgical Assist (next offered in 2027)****Semester Two – Auckland**

Draws on evidence from biomedical and social science research to equip nurses for the care and treatment of surgical patients. Students will be expected to integrate evidence from a range of sources and apply this to the practice of registered nurse first surgical assist.

**NURSPRAC 708\*** 30 points**Emergency Specialty Nursing****Semester One – Auckland**

Draws on evidence from biomedical and social science research to equip nurses for the care and treatment of patients in the emergency setting. Students will be expected to integrate evidence from a range of sources and apply this to the practice of emergency nursing.

**NURSPRAC 711\*** 30 points**Pain Nursing Specialty Nursing (next offered 2027)****Semester Two – Auckland**

Draws on evidence from biomedical and social science research to equip nurses for the care and treatment of patients experiencing pain. Students will be expected to integrate evidence from a range of sources and apply this to the practice of nursing patients with pain.

**NURSPRAC 712\*** 30 points**Diabetes Specialty Nursing****Semester Two – Auckland**

Draws on evidence from biomedical and social science research to equip nurses for the care and treatment of diabetic patients. Students will be expected to integrate evidence from a range of sources and apply this to the practice of nursing patients with diabetes.

**NURSPRAC 716\*** 30 points**Ophthalmology Specialty Nursing (next offered in 2027)****Semester Two – Auckland**

Draws on evidence from biomedical and social science research to equip nurses for the care and treatment of ophthalmology patients. Students will be expected to integrate evidence from a range of sources and apply this to the practice of ophthalmology nursing.

**NURSPRAC 717\*** 30 points**Practicum for RN Designated Prescribers****Semester One – Auckland, Semester Two – Auckland**

Prepares registered nurses to apply for prescribing rights as designated prescribers. Provides nurses with the opportunity to develop knowledge and skills in the application of pharmacotherapeutic concepts to prescribing as a designated prescriber. This includes direct supervision of prescribing activities in the clinical area and the ability to work closely and effectively in a multidisciplinary team environment.

**Prerequisite:** NURSING 742, 773 (or NURSING770/NURSPRAC 720), NURSING 785

**NURSPRAC 727\*** 30 points**Perioperative Nursing Specialty****Semester One – Auckland**

Draws on evidence from biomedical and social science research to equip nurses for the care and treatment of patients across the perioperative continuum. Students will integrate evidence from a range of sources and apply this to the practice of caring for people requiring surgical intervention.

**NURSPRAC 728\*** 30 points**Frailty in Aged Care Nursing****Semester Two – Auckland**

Frailty is an age-related, progressive geriatric syndrome related to pathological changes in underlying physiological and psycho-social function and the leading cause of mortality and morbidity in older people. Draws on evidence from biomedical and social science research to equip nurses for the care and treatment of older people affected by frailty.

**HLTHSCI 700** 30 points**Working with People with Long-term Conditions****Semester One – Auckland****Semester Two – Auckland, Whakatāne**

Long-term conditions present one of the most challenging global epidemics of the twenty-first century. This course is designed to support the development of a responsive person-centred healthcare workforce to meet the needs of people living with long-term conditions and to work with them to improve their self-efficacy and health outcomes.

**HLTHSCI 705\*** 30 points**Mental Health and Addiction for Health Professionals****Semester One – Auckland**

Uses a person-focused theoretical framework to explore mental health and addiction problems presenting in non-specialist mental health settings. Conceptualises mental health and addiction problems as frequently co-occurring. Engagement, assessment, collaborative solution focused interventions, referral and care coordination will be explored.

**HLTHSCI 710** 30 points**Acute Stroke Care****Semester One – Online**

Students will develop advanced interdisciplinary knowledge about pre-hospital care, diagnosis and hyperacute stroke care, secondary stroke prevention, stroke pathophysiology and management of risk factors. Students will evaluate and critique stroke epidemiology and equity of access to stroke services. Skills in assessment of neurological impairment, rehabilitation needs, and discharge planning will be developed with reference to clinical guidelines and local contexts.

**HLTHSCI 715\*** 30 points**Special Topic: Research in Practice****Semester One – Auckland (BNurs(Hons) only)**

Provides students with an in-depth understanding of undertaking research in the health sector. Building on learnings from prerequisite courses, students are supported to operationalise their research through completion of an ethics application as well as collecting and analysing data.

**Research Project – Level 9****Semester One and Semester Two**

This aim of this course is to develop a coherent area of inquiry (10,000 words) that reflects the research purpose and process, and is applied to a specialty area of clinical practice. It consists of work involving the gaining of knowledge and understanding and typically involves enquiry of an experimental or critical nature driven by hypotheses, or intellectual enquiry. The student will work with designated academic staff who will act as supervisor for the project.

**POPLPRAC 758**

30 points

**Biology of Ageing****Semester One – Online**

The systematic analysis of the physiological changes in ageing and the relationship of these changes to current beliefs and theories around the ageing process. Current issues around biogerontology are discussed.

**POPLPRAC 761**

30 points

**Mental Health in Old Age****Semester Two – Auckland**

Explores mental health in old age, including positive mental health and the range of mental health challenges facing older adults. There will be a focus on mental health issues and care across the health continuum, including primary care, specialist mental health services, and aged care services.

**POPLPRAC 767**

30 points

**Dementia Care (next offered in 2027)****Semester Two – Auckland**

A clinically focused course that explores dementia within three specific areas - the brain, the diseases and the person. It explores theoretical concepts and models of dementia care, and focuses on the partnership of individuals, carers and health professionals in the delivery of dementia care.

\*Concession required

N.B. A prerequisite is a course or requirement that needs to be completed in order to be eligible for a course.



# Mental Health and Addiction

You may wish to specialise in your programme in Mental Health Nursing (i.e. PGCertHSc, specialisation Mental Health Nursing). If you don't currently work in mental health and addiction, but would like to explore this pathway, you can consider HLTHSCI 705: Mental Health and Addiction for Health Professionals.

## **NURSING 774\*** 30 points

### **Nursing People in Acute Mental Health Crisis**

#### **Semester Two – Auckland (blended)**

The concept of recovery forms the basis of exploring nursing care of people in states of acute crisis. The course focuses on models of acute care, collaborative care, risk assessment and management, and maintaining a safe, non-coercive environment. Students will be expected to engage in critical reflection and analysis of practice issues and case studies.

## **NURSPRAC 718** 30 points (NESP)

### **Contemporary Mental Health and Addictions Nursing Practice**

#### **Semester Two – Multiple streams: Auckland, Otago, Waikato**

Explores contemporary mental health and addictions nursing practice from both socio-political and practice-skills perspectives. Focuses on developing awareness of the unique mental health and addictions context of Aotearoa, New Zealand and the cultural and values-based practices and policies which have emerged. Builds on foundational therapeutic and interpersonal skills and develops knowledge and skills in contemporary, evidence-based mental health and addictions nursing interventions.

## **NURSPRAC 719** 30 points (NESP)

### **Clinical Practice in Mental Health and Addictions**

#### **Semester One – Multiple streams: Auckland, Otago, Waikato**

A clinically based course focusing on history taking, assessment, formulation and nursing care planning. There is an emphasis on mental health, physical health and addictions assessment and the development of nursing formulation skills.

## **NURSPRAC 720\*** 30 points

### **Advanced Mental Health Assessment**

#### **Semester Two – Auckland**

A clinically based course covering history taking, assessment and case formulation in advanced clinical practice for mental health nurses. There is an emphasis on comprehensive mental health assessment, and negotiation of a client-focused plan of care.

## **NURSPRAC 726\*** 30 points

### **Mental Health Nursing Practicum**

#### **Semester One – Online**

Extends mental health nurses' knowledge and skills in clinical practice, scholarly activity, and leadership to improve health outcomes. Through guided learning experiences and support from clinical and academic mentors, students set and achieve individual learning goals. Focus is on the development of person-centred, reflective practice demonstrating understanding of the socio-political and cultural contexts of health and well-being.

## **HLTHSCI 703\*** 30 points

### **Psychological Interventions in Health Care (next offered in 2027)**

#### **Semester Two – Auckland**

Focuses on increasing health professionals' skills in the use of psychological interventions for people who have acute or long-term mental health or physical health problems. Explores evidence-based psychological models, such as Cognitive and Behaviour Therapy and Motivational Interviewing. Illness beliefs that impact on the person's ability to engage effectively with treatment plans, and self-management of their health problem/s, will also be critiqued.

## **HLTHSCI 705\*** 30 points

### **Mental Health and Addiction for Health Professionals**

#### **Semester One – Auckland**

Uses a person-focused theoretical framework to explore mental health and addiction problems presenting in non-specialist mental health settings. Conceptualises mental health and addiction problems as frequently co-occurring. Engagement, assessment, collaborative solution-focused interventions, referral and care coordination will be explored.

## **POPLPRAC 774** 30 points

### **Psychosocial Issues in Palliative Care**

#### **Semester One – Auckland**

Provides an in-depth examination of the psychological and social dimensions of palliative care for patients with cancer or other progressive, life-limiting illnesses. It covers existential and spiritual responses to suffering, models of coping, and the role of communication in palliative settings. Students will explore family systems theory, psychosocial assessment methods, self care, resilience/professional boundary, grief, and bereavement. The course emphasises holistic, culturally responsive care, including the application of Te Whare Tapa Whā and interprofessional collaboration.

## **POPLPRAC 761** 30 points

### **Mental Health in Old Age**

#### **Semester Two – Auckland**

Explores mental health in old age, including positive mental health and the range of mental health challenges facing older adults. There will be a focus on mental health issues and care across the health continuum, including primary care, specialist mental health services, and aged care services.

## Contact

[postgradnursing@auckland.ac.nz](mailto:postgradnursing@auckland.ac.nz)

Ask to connect with the mental health and addiction academic adviser.

*\*Concession required*

*N.B. A prerequisite is a course or requirement that needs to be completed in order to be eligible for a course.*





*“I feel so proud to be a nurse, doing my part in challenging the stigma and misconceptions around people experiencing mental health issues – and helping people with their recovery.*

*“I can attest to the difference nurses make when it comes to medical assessments and the experiences of people who use our services. Nurses possess a balance of competence in both medical knowledge and values that provide people with hope and comfort in times of vulnerability.*

*“I decided to specialise in Adult Mental Health because I believe mental wellbeing is crucial if we want to live purposeful and meaningful lives.*

*“The mental health sector has progressed in multiple ways in terms of safety, cultural competency, and holistic recovery for people. I feel privileged to do my part in maintaining this progression for the wellbeing of people in Aotearoa.”*

## **Mikkol Gabriel Macabali**

Graduate: Bachelor of Nursing (BNurs),  
Postgraduate Certificate in Health  
Sciences – specialising in Mental  
Health Nursing (PGCertHSc)



[auckland.ac.nz/nursing-pg](https://auckland.ac.nz/nursing-pg)

# Child and Youth Health

If you're interested in Child and Youth Health, further your knowledge in this specialist area by studying courses with a focus on Child and Youth Health.

## NURSING 773

30 points

### (Child and Young Person Health stream)

#### Advanced Assessment and Clinical Reasoning

##### Semester One – Auckland

Nurses make a variety of diagnoses in their daily practice. Advanced nursing practice requires skilled health assessment, estimation of probabilities and evidence-based diagnostic reasoning. This complex cognitive process is developed in relation to skills and knowledge required for sound clinical reasoning.

## NURSPRAC 703 A/B\*

30 points

### Paediatric Cardiac Specialty Nursing

##### Semester One (A) – Auckland, Semester Two (B) – Auckland

Draws on evidence from biomedical and social science research to equip nurses for the care and treatment of paediatric cardiac patients. Students will be expected to integrate evidence from a range of sources and apply this to the practice of paediatric cardiac nursing.

*Note: NURSPRAC 703 A/B is intended for nurses working in the paediatric intensive care environment while undertaking study.*

## NURSPRAC 713\*

30 points

### Paediatric Intensive Care Nursing (next offered 2027)

##### Semester One – Auckland

Draws on evidence from biomedical and social science research to equip nurses for the care and treatment of paediatric intensive care patients. Students will be expected to integrate evidence from a range of sources and apply this to the practice.

*Note: NURSPRAC 713 is intended for nurses working in the paediatric intensive care environment while undertaking study.*

## NURSPRAC 723\*

30 points

### Paediatric Cardiac Intensive Care (next offered 2027)

##### Semester Two – Auckland

Extends specialised nursing skills for the nurse in paediatric cardiac and intensive care settings. Through guided learning experiences and support from clinical and academic mentors, students set and achieve individual learning goals. Focus is on practice development and clinical leadership, demonstrating understanding of quality healthcare and the socio-political and cultural contexts of health and well-being.

**Prerequisite:** NURSPRAC 713

*Note: NURSPRAC 723 is intended for nurses working in the paediatric intensive care environment while undertaking study.*

## Contact

[postgradnursing@auckland.ac.nz](mailto:postgradnursing@auckland.ac.nz)

Ask to connect with an academic adviser.

## Youth Health courses

The following Youth Health courses are available within the wider Faculty of Medical and Health Sciences. Please note to incorporate any of the following Youth Health courses, in your Nursing programme (up to 30 points); you must seek preapproval from the School of Nursing.

For preapproval you must contact both the Department of Paediatrics: Child and Youth Health and the School of Nursing using the email address below.

The Youth Health courses are all 15 points. PAEDS 712 is the foundation course for clinicians working with young people. This can be taken alone or together in the same semester as any other Youth Health course.

## PAEDS 708

15 points

### Population Youth Health

##### Semester One – Auckland (blended)

Youth injury prevention, resiliency factors and reproductive issues, and advocacy for young people. How do you make a difference in youth health? This course introduces key concepts in population youth health and utilises an evidence-based approach and New Zealand practice examples to consider how youth health can be improved in communities and populations.

## PAEDS 712

15 points

### Youth Health Clinical Skills

##### Semester One – Auckland (blended)

Develops and extends knowledge and skills in clinical interviewing, comprehensive assessments and effective interventions with young people.

## PAEDS 719

15 points

### Health, Education and Youth Development

##### Semester Two – Auckland (blended)

Examines the overlap of health and education in the context of youth development by exploring the impact of past and current developments and strategies in both sectors on the well-being of young people. It reviews the 'business' of schools, the health and physical education curriculum, school-based health and support services, whole school approaches to health, and the health and education needs of students not engaged with the school system.

## PAEDS 721

15 points

### Clinical Care of Adolescents and Young Adults with Cancer

##### Semester Two – Online

To develop and advance skills, knowledge and expertise in the clinical care of adolescents and young adults with cancer.

**Prerequisite:** PAEDS 712

Getting sound advice at the beginning and throughout your academic journey can be helpful when deciding what pathway to take. The Child and Youth Health network is a group of academics from throughout the University who can be contacted to support you in your academic progression, including mentorship and research supervision.

## Contact

[louise.albertella@auckland.ac.nz](mailto:louise.albertella@auckland.ac.nz)

For queries related to the Youth Health courses (PAEDS).

\*Concession required

N.B. A prerequisite is a course or requirement that needs to be completed in order to be eligible for a course.





*“I chose to study at Waipapa Taumata Rau | The University of Auckland because of the programme it offered, the support provided and the convenient location. The support and services were instrumental in helping me to complete my Postgraduate Diploma in Health Sciences, specialising in Advanced Nursing.*

*“The teaching staff and tutors were exceptional – they provided me with the individual support I needed and supported my learning with relevant clinical cases, online resources and insights on their own experience in the field. My diploma also allowed me to be part of the wider community of nurses and experience their collegial support whilst undertaking the same study path.*

*“I was fortunate enough to follow a study path that prepared me for my current role. I am working as a Mātanga Tapuhi, Nurse Practitioner in Child and Youth Health at the Starship Blood and Cancer Centre. The skills and knowledge that I covered as part of my studies is essential and invaluable to my current role, as was the support I received from my tutors and teachers. It enabled me to apply what I learned in the classroom into my nursing practice.*

*“It’s an absolute privilege to provide nursing care for tamariki, young people and their whānau.”*

## **Erin Kavanagh**

Graduate: Postgraduate Diploma in Health Sciences, Specialisation in Advanced Nursing

[auckland.ac.nz/nursing-pg](https://auckland.ac.nz/nursing-pg)



# Palliative Care

Our courses in Palliative Care are designed for clinicians working within palliative care. Learn how to develop the attitudes and knowledge needed to care for patients and families living with a serious, life-changing or end-of-life illness. Palliative Care focuses on patient care for those facing life-challenging illness and embraces the essential elements and principles of patient-centred, holistic care.

## NURSPRAC 710

30 points

### Palliative Care Specialty Nursing

#### Semester One – Auckland

Draws on evidence from biomedical and social science research to equip nurses for the care and treatment of palliative care patients. Students will be expected to integrate evidence from a range of sources and apply this to the practice of palliative care nursing.

## POPLPRAC 772

30 points

### Symptom Management in Palliative Care

#### Semester One – Auckland

An overview of key symptoms commonly encountered in patients with progressive diseases in palliative care and end of life. Addresses assessment and management of these common symptoms using evidenced-based learning.

## POPLPRAC 773

30 points

### Challenges in Symptom Management in Palliative Care

#### Semester Two – Auckland

An overview of key symptoms commonly encountered in malignant and non-malignant patients in palliative care and at end-of-life. Addresses assessment and management of these common symptoms using evidenced-based learning.

**Prerequisite:** POPLPRAC 772, 722

## POPLPRAC 774

30 points

### Psychosocial Issues in Palliative Care

#### Semester One – Auckland

Provides an in-depth examination of the psychological and social dimensions of palliative care for patients with cancer or other progressive, life-limiting illnesses. It covers existential and spiritual responses to suffering, models of coping, and the role of communication in palliative settings. Students will explore family systems theory, psychosocial assessment methods, self care, resilience/professional boundary, grief, and bereavement. The course emphasises holistic, culturally responsive care, including the application of Te Whare Tapa Whā and interprofessional collaboration.

## POPLHLTH 777

30 points

### Ethics and Societal Approaches to Death

#### Semester Two – Auckland

Explores the ethical, societal, and cultural dimensions of death, with a strong emphasis on palliative care. The course examines how different cultures approach death and dying, and the implications for care delivery. Key topics include ethical decision-making in end-of-life care, patient privacy, living wills, and related legal considerations. It also addresses the structure and function of multidisciplinary palliative care teams, Te Ara Whakapiri, communication, future care planning, and provider self-care. Responsibilities following death and the broader societal context of dying are also considered.

## Contact

[postgradnursing@auckland.ac.nz](mailto:postgradnursing@auckland.ac.nz)

Ask to connect with an academic adviser.

*\*Concession required*

*N.B. A prerequisite is a course or requirement that needs to be completed in order to be eligible for a course.*



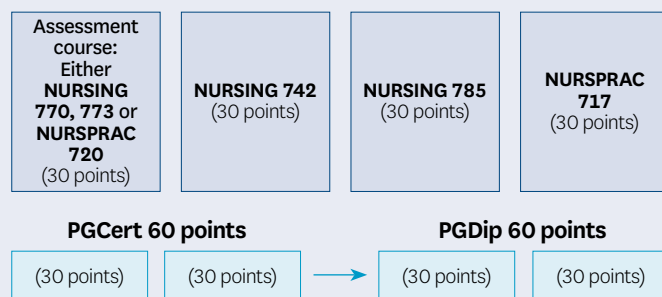
# Educational pathway for Registered Nurse Designated Prescriber

A registered nurse (RN) designated prescriber is an RN with Te Kaunihera Tapuhi o Aotearoa, the Nursing Council of New Zealand has granted prescriptive authority (Medicines Regulation 2016). These nurses are authorised to prescribe treatment for a range of common and long-term conditions (e.g., diabetes, respiratory conditions or cardiovascular health concerns) within a structured multidisciplinary team (MDT). These four courses can be completed within a PGDipHSc or other qualification.

## Academic preparation for RN Designated Prescribing

### Required courses

The nurse will need to complete the following four courses to complete the educational requirements for registration with Te Kaunihera Tapuhi o Aotearoa, the Nursing Council of New Zealand:



### Note:

- Both an assessment course and NURSING 742 are prerequisites for NURSING 785.
- NURSING 785 is a prerequisite for NURSPRAC 717.
- Students wishing to undertake NURSPRAC 717 must submit application documentation to the NURSPRAC 717 Course Administrator prior to acceptance into this course - contact [postgradnursing@auckland.ac.nz](mailto:postgradnursing@auckland.ac.nz) and ask to be connected with the NURSPRAC 717 Course Administrator.
- NURSING 770 Clinical Practice Development is an eligible course if completed after 2018.

These courses provide educational support for experienced nurses to further develop advanced clinical skills in patient assessment and diagnostic reasoning in relation to the clinical management and prescribing for patients with common acute and long-term conditions. Advanced knowledge in pathophysiology and pharmacotherapeutics supports the nurse's clinical decision-making skills.

The prescribing practicum includes a minimum of 150 hours of mentored clinical practice under the supervision of a prescribing mentor (senior medical practitioner or senior nurse practitioner). The practicum will be conducted in the area of practice and within the workplace and team, that the nurse will be working in as an RN designated prescriber. The practicum will include opportunities to consolidate the nurse's patient consultation and assessment, diagnostic reasoning, clinical decision-making and treatment planning skills.

## Entry requirements for the prescribing practicum

The registered nurse must:

- Hold a current practising certificate with Te Kaunihera Tapuhi o Aotearoa, the Nursing Council of New Zealand, and have three years of fulltime practice in the area they intend to prescribe on completion of the programme (with at least one year of the total practice in Aotearoa, New Zealand).
- Have identified and have access to an area of clinical practice in which to develop their prescribing skills, and have up-to-date clinical knowledge relevant to their intended area of prescribing practice.
- Have the support of their employer and work with a multidisciplinary team prepared to support the nurse's development as an RN designated prescriber through policy, audit, peer review and accessibility of continuing education.
- Have identified an authorised prescribing mentor (a senior medical practitioner or senior nurse practitioner) who will supervise the practicum hours (minimum 150 hours) and support the nurse's development in clinical practice.
- Have completed and successfully passed one of the required assessment courses, along with NURSING 742 and NURSING 785. NURSING 773 (or equivalent) and NURSING 785 must be current i.e. have been completed within 10 years of commencing the prescribing practicum course.

## Contact

[postgradnursing@auckland.ac.nz](mailto:postgradnursing@auckland.ac.nz)

Ask to connect with the RN Designated Prescribing pathway academic adviser.

# Educational pathway for Nurse Practitioner

Nurse practitioners are highly skilled autonomous health practitioners with masters-level educational preparation and advanced clinical skills. Nurse practitioners are registered as such with Te Kaunihera Tapuhi o Aotearoa, the Nursing Council of New Zealand and have the legal authority to practise in the Nurse Practitioner Scope of Practice.

## Preparation for Nurse Practitioner

- Successfully completed prerequisite courses.
- Masters level qualification.
- Nurses must be practising clinically at an advanced level as they complete the Nurse Practitioner pathway.
- It is important to have the support of your employer to develop towards the nurse practitioner role as you complete your postgraduate studies.
- Completed the one-year Nurse Practitioner Training Programme.

## Building your postgraduate pathway towards becoming a nurse practitioner

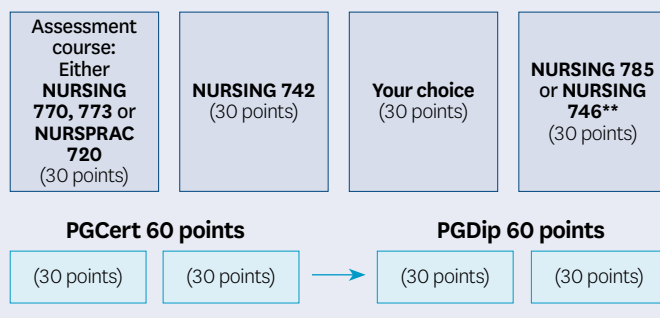
The following outlines the courses and potential pathway options for those aspiring to become a nurse practitioner.

### Early postgraduate study

Strong clinical expertise is necessary for nurse practitioner practice. Nurses must be able to demonstrate advanced health assessment and clinical exam skills with clinical reasoning and knowledge of pathophysiology and pharmacology before proceeding to the final masters stage of the pathway. Students must successfully complete the PGCertHSc and PGDipHSc, meeting the GPA criteria to proceed to MNurs. If a student has completed previous postgraduate study or completed a programme such as the MNSc prior to their nursing registration, they should connect with the School of Nursing to discuss their options.

### Required courses

The following courses are prerequisites for the Nurse Practitioner Training Programme and should be included in the PGCertHSc and PGDipHSc.



- NURSING 770 – is an eligible course if completed after 2018.
- Both an assessment course and NURSING 742 are prerequisites for NURSING 785.
- If you are not undertaking the NURSING 795 A/B dissertation course in your masters (many aspiring nurse practitioners do not) then you must leave one of NURSING 746, 785 until you are in the Masters programme.
- NURSING 746 is highly recommended for aspiring nurse practitioners\*\*.
- If you have previously completed the RN prescribing requirements in your PGDip - you may continue on to the MNurs as long as you have met the GPA requirements.





## Masters level study

The Master of Nursing (MNurs) is a 120-point programme (see page 8, MNurs (taught)); courses that can be included in your 120-point masters are listed below. These courses do need to be completed, however the

order that you complete them in will depend on your overall readiness, how much time you have left to complete your masters and whether you have been accepted onto the Nurse Practitioner Training Programme.

<b>NURSING 746 or 785 – Level 9</b> (30 points)	<b>NURSING 701 Level 9</b> (30 points)	<b>NURSING 743</b> (30 points)	<b>NURSING 740 Level 9</b> (30 points)
----------------------------------------------------	-------------------------------------------	-----------------------------------	-------------------------------------------

### Note:

- NURSING 785 and NURSING 746 are both level 9 courses.
- 60 points of the Master of NURSING must be of level 9 courses.
- Unless you take the NURSING 795 A/B 60 point dissertation course, you must take NURSING 701 plus one more level 9 course in your masters to meet the masters degree regulatory requirements.
- NURSING 701 must be the final course of the MNurs, unless the student is undertaking option 2.

### Option 1

If you have been accepted onto the NPTP the MNurs could look like this:

#### Masters 120 points

<b>NURSING 746 or NURSING 785 – Level 9</b> (30 points)	<b>NURSING 701 Level 9</b> (30 points)	<b>NURSING 743</b> (30 points)	<b>NURSING 740 Level 9</b> (30 points)
------------------------------------------------------------	-------------------------------------------	-----------------------------------	-------------------------------------------

or

### Option 2

If you are not yet ready to enter the NPTP, you could complete your MNurs like this:

#### Masters 120 points

(30 points)	(30 points)	(30 points) Level 9	<b>NURSING 701 Level 9</b> (30 points)
-------------	-------------	------------------------	-------------------------------------------

MNurs awarded and accepted onto the NPTP

#### Further postgraduate qualification

<b>NURSING 743</b> (30 points)	<b>NURSING 740 Level 9</b> (30 points)
-----------------------------------	-------------------------------------------

All students are required to contact the Nurse Practitioner pathway coordinator prior to enrolment into the MNurs for course advice.

## Nurse Practitioner Training Programme – Nurse Practitioner practicum year

The final practicum year is part of the Nurse Practitioner Training Programme. This is an application-based programme, and details are available at: [nurseworkforce.blogs.auckland.ac.nz/nptp/](http://nurseworkforce.blogs.auckland.ac.nz/nptp/)

Academically, the practicum year consists of two courses, NURSING 743 and NURSING 740.

### Nurse Practitioner Training Programme practicum year

<b>NURSING 743</b> (30 points)	<b>NURSING 740 Level 9</b> (30 points)
-----------------------------------	-------------------------------------------

NURSING 743 and NURSING 740 are designed to refine advanced clinical decision-making skills for nurses preparing for the Nurse Practitioner Scope of Practice. Nurse practitioners provide primary and specialty care and need expertise in clinical decision-making. Nurse practitioners utilise advanced assessment skills along with disease management models to develop evidence-based clinical decisions needed for prescribing pharmacologic and non-pharmacologic treatment plans.

It may be possible to include one or both courses within your taught masters. However, if you complete your masters programme before you are admitted to the Nurse Practitioner Training Programme, it is possible to complete these final courses as part of another qualification, such as a second PGCert (criteria applies), for example. If this situation is relevant to you, please contact the School of Nursing.

### Eligibility for the Nurse Practitioner practicum year

- Have completed a minimum of three years of full-time practice within the last five years, with at least one of the three years in full-time practice (0.8 FTE or higher) in Aotearoa, New Zealand. This experience should be in the area of practice that the nurse practitioner will be practising once registered.
- A solid foundation of clinical skills and knowledge is required to be able to practice at an advanced level.
- Have identified a clinical supervisor (senior nurse practitioner or senior doctor) who is willing to mentor the attainment of the advanced skills and competencies required for Nurse Practitioner practice.
- Written agreement from your employer must be provided with the application to confirm a minimum of 500 hours of additional clinical release time, clinical supervisor availability, and release to attend university study days.
- The (NURSING 773 [or equivalent] and NURSING 785 prerequisite courses must have been completed within the last ten years before entering the practicum year.

## Contact

[postgradnursing@auckland.ac.nz](mailto:postgradnursing@auckland.ac.nz)

Ask to connect with the Nurse Practitioner pathway academic adviser.

# How to apply

This guide will help you to complete the online 'Application for Admission' to Waipapa Taumata Rau, University of Auckland. To begin your application, please visit: **[applytostudy.auckland.ac.nz](https://applytostudy.auckland.ac.nz)**

*Note: You MUST provide your official academic transcripts for all prior study to complete your application. You will also need to know your nursing registration number for the application.*

If you have not studied with us before, click 'Register for a new account'. Once you enter the required information and click on 'Register', the system will send you an email which will show as **onelogon@auckland.ac.nz**. Please check your inbox (or junk mail) and validate your email address by selecting the 'Complete your Registration' button.

If you have registered with the University of Auckland before, please use your Student ID or email address and password to log in. If you do not remember your login details please phone **0800 61 62 63** for help to reset it or email **onelogon@auckland.ac.nz**

Once your registration is complete, please sign in and begin your new application. If you have any questions or issues when completing the online application please email **postgradnursing@auckland.ac.nz**

1

Apply (online)

2

Submit documentation  
(some candidates may  
be required to submit  
further documentation)

3

Receive 'Offer of Place'

4

Accept your 'Offer of  
Place' in programme

5

Enrol in your course

## Step 1 Apply online

- To begin your application, please go to: **[applytostudy.auckland.ac.nz](https://applytostudy.auckland.ac.nz)**  
When you open your 'Application for Admission' for the first time we will ask you to provide your personal information and details of your academic history and qualifications.
- Complete 'Programme' section. Select from the drop down boxes below:

### Programme

Which programme are you applying for?

[Help](#)

Postgrad Diploma/Certificate

**Programme type:**  
e.g., Postgrad Diploma/Certificate

### Programme

[Help](#)

Postgraduate Certificate in Health Sciences

**Note:** The Postgraduate Certificate in Health Sciences is aimed at current health professionals and those with a relevant degree wishing to pursue postgraduate study in a health related field.

[Click here](#) for more information on this programme.

**Programme name:**  
e.g., PG Cert in Health Sciences

### Major/Specialisation:

[Help](#)

Advanced Nursing

**Note:** [Click here](#) for additional information on the Advanced Nursing major/specialisation.

The specialisation in Advanced Nursing is aimed at registered nurses seeking to advance their knowledge and skills. It is intended to give nurses the core generic skills and knowledge essential for advanced nursing practice in a specialist area, and preparation for research.

**!** You have reached the maximum number of majors/specialisations you can apply for.

**Major or specialisation:** e.g., Advanced Nursing or Mental Health Nursing

Done

- Choose the appropriate term. If you wish to study more than one course, please contact us.

When do you want to start your studies?

[Help](#)

2020 Semester One

Select which semester you want to begin studying

Campus Location

[Help](#)

Grafton (Default)

Answer 'No' if your DHB is funding your course – this is not classed as a scholarship.

### Scholarships

Have you been awarded a scholarship or other funding that will pay for your University of Auckland tuition fees?

[Help](#)

☐ Yes  
☒ No

Next >

Save and exit

4. Complete 'Supplementary Programme Information' section.

Upload academic transcript and evidence of completed study.

## Supplementary Programme Information

### Programme specific questions

What is your Nursing Council of New Zealand registration number?

12345

15 characters remaining.

Please give a brief work history covering the last five years.

Course coordinator for various courses in the Bachelor of Nursing programme.  
Development of online virtual client teaching and learning module for older person component

Minimum 100 characters.

831 characters remaining.

Next >

Save and exit

**Specific questions:**  
Answer and complete both fields

If you are a new student to the University of Auckland, you will not be able to proceed with your application without uploading this document. If you have not yet received your official transcript, please upload a screenshot of your latest transcript from your university or Tertiary Education Commission (TEC) dashboard. You will still need to provide an official transcript as soon as possible.

### Supporting information

Please provide the following information to support your application:

#### Tertiary study

[Help](#)

Advanced Diploma in Nursing  
Auckland University of Technology, 2017-2018

#### Academic transcript

(Required for application submission)

MHS 20 Years Nursing.pdf

Replace

Next >

Save and exit

5. The next fields is required for statistical use by the Ministry of Education and the University of Auckland.

## Review & submit your Application

### Additional Information

The information collected in this section is for statistical use by the Ministry of Education and the University of Auckland. It will not be possible to identify any individual whose information has been used to produce those statistics. Your answers will not affect your entry to the University or to a particular programme.

What is the highest qualification held by your parent or caregiver?

Fifth Form Certificate or equivalent

What was your main activity or occupation in New Zealand as at 01 October in the year before your intended enrolment?

Wage or Salary Worker

**Additional information:**  
Please complete both fields for statistical records

6. Please review your application and check that the information you have provided are correct.

### Review your Application

[Help](#)

Please review the information below and check that the details you have provided are correct.

You are applying for:

Postgraduate Certificate in Health Sciences

First Major/Specialisation: Advanced Nursing

Intended start date: 2020 Semester One

Location: Grafton

**Application details:**  
You can go back and update any sections if required

7. Tick 'I agree' box. Click 'Submit' to complete your application. You will receive an acknowledgement email from us within two working days.

### Declaration

Important: Completing and submitting this application online constitutes signing and dating the declaration as defined under the Electronic Transactions Act 2002. **The information contained in this application must be true, correct and complete.**





## What happens next?

### Check your email

Once you have submitted your application, you will receive an email with your ID number. Please monitor your email address for information and further requirements.

The acknowledgement email will be sent to the email address you registered your application with. It will include a list of specific certified documents (and, in some cases, other requirements) necessary to complete your application.

You can use your Student ID and the password you set up while applying, to sign into your Application for Admission, check your application status and see the documentation you need to provide at:

**[applytostudy.auckland.ac.nz](https://applytostudy.auckland.ac.nz)**

### Step 2 Submitting identification and residency documents

Once you have submitted your application, you must log back in to see if you also need to provide an ID or residency document. If it asks you to provide one, you must get this certified and then upload it to your application. Please do not send in a physical copy.

More information on this, including what documents we accept and how to get them correctly certified, can be found at:

**[auckland.ac.nz/supporting-documents](https://auckland.ac.nz/supporting-documents)**

If, when logging in to your application, you do not see anything indicating that you need to provide an ID/residency document, it means that we have managed to verify your identity through other means (e.g. RealMe, NSI number) and do not have to upload anything for this.

Note: A certified document is a copy of the original endorsed with the statement "Original sighted. Certified true copy" by either a Justice of the Peace (JP), Solicitor, Notary Public (full details of the certifier must be included), or an authorised staff member of Waipapa Taumata Rau, University of Auckland Student Information Centre.

If you are unable to source and submit any of your academic transcripts that have been requested for assessment, it is important that you notify us as soon as possible, outlining what you are unable to submit and why, by emailing **[admission@auckland.ac.nz](mailto:admission@auckland.ac.nz)**.

### Step 3 Assessment of your application and offer of place

This may take three to four weeks during peak admission periods. You can check the status of your Application for Admission at any time by signing in using your Student ID and password at

**[applytostudy.auckland.ac.nz](https://applytostudy.auckland.ac.nz)**

You will be notified of the outcome of your application by email and will be able to view this by signing into your Application for Admission.

### Step 4 Accept your offer of place online

Sign back into your Application for Admission and select 'Accept'.

Congratulations! You are now a student at Waipapa Taumata Rau, University of Auckland. All communication from now on will be sent to your university email.

### Step 5 Enrol in your course

You can now apply to enrol in your chosen course/s using the Waipapa Taumata Rau, University of Auckland Student Services Online portal.

### Contact

**[admission@auckland.ac.nz](mailto:admission@auckland.ac.nz)**

For admission and enrolment support, please email us.

# Helpful information

We want to do all we can to help you succeed as a postgraduate student in our School of Nursing. To help you achieve this success, a wide range of services are available to you throughout your study journey with us.

## Awards, scholarships and grants

There are a wide range of awards, scholarships and research grants available to our postgraduate and doctoral students.

### Victoria League Postgraduate Nursing Award

An award to support Nursing students with the costs to complete postgraduate study, up to completing a masters degree.

[auckland.ac.nz/victoria-league-pg-nursing-award](https://auckland.ac.nz/victoria-league-pg-nursing-award)

### Dr William Bruce Goodfellow Award for Primary Care Nursing

An award to assist Aotearoa, New Zealand citizens and permanent residents with the compulsory fees to undertake a PGDip in Health Sciences and/or a MNurs in the School of Nursing.

[auckland.ac.nz/dr-william-goodfellow-award](https://auckland.ac.nz/dr-william-goodfellow-award)

### Victoria League Nursing Doctoral Fees Award

An award to cover the compulsory fees for up to 36 months FTE for domestic DHSc students and domestic and international PhD students in Nursing.

[auckland.ac.nz/victoria-league-doctoral-nursing-award](https://auckland.ac.nz/victoria-league-doctoral-nursing-award)

### Kilpatrick Research Excellence Prize

A \$2,000 prize to recognise the masters level nursing student who achieved the highest marks for a thesis or research portfolio.

[auckland.ac.nz/kilpatrick-research-excellence-prize](https://auckland.ac.nz/kilpatrick-research-excellence-prize)

For information on scholarship opportunities visit

[auckland.ac.nz/scholarships](https://auckland.ac.nz/scholarships) or

email: [scholarships@auckland.ac.nz](mailto:scholarships@auckland.ac.nz)

For more information on research funding:

[auckland.ac.nz/pg-research-scholarship](https://auckland.ac.nz/pg-research-scholarship)

### Ann Craig Memorial Award

A \$2,000 award to recognise the student who achieved the highest mark in the Cancer and Palliative Care Nursing Practice course.

### Dr Alistair MacFarlane Memorial Award

A \$2,000 award to recognise the student who achieved the highest mark in NURSING 742 Biological Science for Practice course.

## External funding opportunities

For information on external scholarships and funding opportunities visit :

- Te Whatu Ora Health New Zealand.
- Te Pou
- New Zealand Nurses Organisation

## Resources for Postgraduate Nursing students

### Postgraduate nursing orientations

[auckland.ac.nz/fmhs/pg-nursing-orientation](https://auckland.ac.nz/fmhs/pg-nursing-orientation)

### Māori and Pacific Admission Scheme (MAPAS)

[auckland.ac.nz/fmhs/mapas](https://auckland.ac.nz/fmhs/mapas)

To apply for MAPAS, go to: [auckland.ac.nz/mapas-pg-support-form](https://auckland.ac.nz/mapas-pg-support-form)

### Te Fale Pouāwhina

[auckland.ac.nz/tfp](https://auckland.ac.nz/tfp)

To connect with Te Fale Pouāwhina, email: [tfp@auckland.ac.nz](mailto:tfp@auckland.ac.nz)

### English Language Enrichment (ELE)

[library.auckland.ac.nz/ele](https://library.auckland.ac.nz/ele)

### Ratonga Hauātanga Taura | Student Disability Services (SDS)

[auckland.ac.nz/disability](https://auckland.ac.nz/disability)

### Student Support Team

[auckland.ac.nz/fmhs/student-support](https://auckland.ac.nz/fmhs/student-support)

To connect with a Student Support Advisor,

email: [fmhssupport@auckland.ac.nz](mailto:fmhssupport@auckland.ac.nz)

### Student Hubs

[auckland.ac.nz/student-hubs](https://auckland.ac.nz/student-hubs)

### Te Tumu Herenga | Libraries and Learning Services

[auckland.ac.nz/library](https://auckland.ac.nz/library)

### Te Tumu Herenga | Libraries and Learning Services Workshops

[auckland.campuslabs.com/engage/organization/tetumuherenga](https://auckland.campuslabs.com/engage/organization/tetumuherenga)

### Learning Essentials

[learningessentials.auckland.ac.nz/](https://learningessentials.auckland.ac.nz/)

### Student Health and Counselling Service

[auckland.ac.nz/studenthealth](https://auckland.ac.nz/studenthealth)

### International students

[auckland.ac.nz/international](https://auckland.ac.nz/international)

### FMHS Rainbow Student Network

[auckland.ac.nz/fmhs/rainbow-student-network](https://auckland.ac.nz/fmhs/rainbow-student-network)

### Student IT Hub

[library.auckland.ac.nz/it-essentials](https://library.auckland.ac.nz/it-essentials)

### Nursing Hub

[canvas.auckland.ac.nz/courses/70593](https://canvas.auckland.ac.nz/courses/70593)







# Course schedules 2026

Course	Name	Points	Semester		Delivery	Location
NURSING 701	Research Project - Level 9	30	1	2	Face-to-face	Auckland
NURSING 732	Leading and Managing Changes in Healthcare	30		2	Face-to-face	Auckland, Northland
NURSING 735	Clinical Education Practicum	30		2	Online	Online
NURSING 740	Nurse Practitioner Prescribing Practicum – Level 9 (NPTP)	30		2	Face-to-face	Auckland
NURSING 741	Education for Clinical Practice	30	1		Blended	Auckland
NURSING 742	Biological Science for Practice	30	1	2	Online	Online
NURSING 743	Nurse Practitioner Advanced Practicum (NPTP)	30	1		Face-to-face	Auckland
NURSING 744	Critical Care Specialty Nursing Practicum	30		2	Face-to-face	Auckland
NURSING 745	Principles of Medication Management	30	1	2	Dual delivery	Either online or Auckland
NURSING 746	Evidence-based Practice and Implementation - Level 9	30	1	2	Face-to-face	Auckland
NURSING 749	Whānau Ora Tahī	30	1		Face-to-face	Northland
NURSING 773	Advanced Assessment and Clinical Reasoning (Adult Health stream)	30	1	2	Face-to-face	Semester 1: Auckland, BOP, Northland, Taranaki; Semester 2: Auckland, Lakes, Northland, Taranaki
NURSING 773	Advanced Assessment and Clinical Reasoning (Child and Young Person Health stream)	30	1		Face-to-face	Auckland
NURSING 774	Nursing People in Acute Mental Health Crisis	30		2	Blended	Auckland
NURSING 775	Leadership and Management for Quality Health Care	30	1		Face-to-face	Auckland, Northland
NURSING 782	Research Methods in Nursing and Health - Level 9	30	1	2	Face-to-face	Auckland
NURSING 783	Special Topic: Pae Ora	30		2	Face-to-face	Northland
NURSING 784	Advanced Emergency Nursing Practicum	30		2	Face-to-face	Auckland
NURSING 785	Clinical Reasoning in Pharmacotherapeutics – Level 9	30	1	2	Semester 1 face-to-face, Semester 2 blended	Auckland
NURSING 791 A/B	Research Portfolio – Level 9	90	*	*		
NURSING 795 A/B	Dissertation – Level 9	60	1(A)	2 (B)	Face-to-face	Auckland
NURSING 798 A/B	Research Portfolio - Level 9	120	*	*		
NURSING 799 A/B	Thesis - Level 9	120	*	*		
NURSPRAC 701	Cardiac Specialty Nursing	30	1		Face-to-face	Auckland
NURSPRAC 702	Critical Care Specialty Nursing	30	1		Face-to-face	Auckland
NURSPRAC 703 A/B	Paediatric Cardiac Specialty Nursing	30	1(A)	2(B)	Face-to-face	Auckland
NURSPRAC 704	Cancer Specialty Nursing	30		2	Face-to-face	Auckland
NURSPRAC 707	Registered Nurse First Surgical Assist (next offered 2027)	30		2	Face-to-face	Auckland
NURSPRAC 708	Emergency Specialty Nursing	30	1		Face-to-face	Auckland
NURSPRAC 710	Palliative Care Specialty Nursing	30	1		Face-to-face	Auckland
NURSPRAC 711	Pain Nursing Specialty Nursing (next offered 2027)	30		2	Face-to-face	Auckland
NURSPRAC 712	Diabetes Specialty Nursing	30		2	Face-to-face	Auckland
NURSPRAC 713	Paediatric Intensive Care Nursing (next offered 2027)	30	1		Face-to-face	Auckland
NURSPRAC 716	Ophthalmology Specialty Nursing (next offered 2027)	30		2	Face-to-face	Auckland
NURSPRAC 717	Practicum for RN Designated Prescribers	30	1	2	Face-to-face	Auckland
NURSPRAC 718	Contemporary Mental Health and Addictions Nursing Practice (NESP)	30		2	Face-to-face	Multiple streams: Auckland, Otago, Waikato
NURSPRAC 719	Clinical Practice in Mental Health and Addictions (NESP)	30	1		Face-to-face	Multiple streams: Auckland, Otago, Waikato
NURSPRAC 720	Advanced Mental Health Assessment	30		2	Face-to-face	Auckland
NURSPRAC 723	Paediatric Cardiac Intensive Care (next offered 2027)	30		2	Face-to-face	Auckland
NURSPRAC 726	Mental Health Nursing Practicum	30	1		Online	Online
NURSPRAC 727	Perioperative Nursing Specialty	30	1		Face-to-face	Auckland
NURSPRAC 728	Frailty in Aged Care Nursing	30		2	Face-to-face	Auckland
HLTHSCI 700	Working with People with Long-term Conditions	30	1	2	Face-to-face	Semester 1: Auckland Semester 2: Auckland, Whakatāne
HLTHSCI 703	Psychological Interventions in Health Care (next offered 2027)	30		2	Face-to-face	Auckland
HLTHSCI 705	Mental Health and Addiction for Health Professionals	30	1		Face-to-face	Auckland
HLTHSCI 710	Acute Stroke Care	30	1		Online	Online
HLTHSCI 715	Research in Practice	30	1		Face-to-face	Auckland
HLTHSCI 789	Research Project - Level 9	30	1	2	N/A	N/A
POPLPRAC 772	Symptom Management in Palliative Care	30	1		Face-to-face	Auckland
POPLPRAC 773	Challenges in Symptom Management in Palliative Care	30		2	Face-to-face	Auckland
POPLPRAC 774	Psychosocial Issues in Palliative Care	30	1		Face-to-face	Auckland
POPLPRAC 758	Biology of Ageing	30	1		Online	Online
POPLPRAC 761	Mental Health in Old Age	30		2	Face-to-face	Auckland
POPLPRAC 767	Dementia Care (next offered 2027)	30		2	Face-to-face	Auckland
POPLHLTH 777	Ethics and Societal Approaches to Death	30		2	Face-to-face	Auckland

Face-to-face = Course delivered on-site; Online = Course delivered in an online capacity; Blended = Course delivered in a mix of face-to-face and online forums; Dual = Students' enter EITHER an online OR face-to-face stream of the course.

NURSING 791 is 90 points over three semesters, NURSING 798 and 799 are 120 points over four semesters. These courses can be commenced in either semester.



Waipapa  
Taumata Rau  
**University  
of Auckland**

For personal assistance, please visit us at your local Student Hub, where students and whānau are welcome to talk with our expert advisers:

**Grafton Campus:**

Philson Library, Building 503  
Level 1, 85 Park Rd, Grafton  
(Entry via the Atrium)

**City Campus:**

General Library, Building 109,  
5 Alfred Street, Auckland

**South Auckland Campus**

**Te Papa Ako o Tai Tonga:**  
6 Osterley Way, Manukau

**Whangārei Campus**

**Te Papa Ako o Tai Tokerau:**

L Block, 13 Alexander Street, Whangārei

**AskAuckland:** [auckland.ac.nz/askus](http://auckland.ac.nz/askus)

**Phone us:**

Auckland: (09) 923 5025

Outside Auckland: 0800 61 62 63

International: +64 9 373 7513

**Web:** [auckland.ac.nz/fmhs](http://auckland.ac.nz/fmhs)

For all Postgraduate Nursing enquiries please  
email: [postgradnursing@auckland.ac.nz](mailto:postgradnursing@auckland.ac.nz)



[auckland.ac.nz/fmhs/son](http://auckland.ac.nz/fmhs/son)