



UNIVERSITY OF  
AUCKLAND  
Waipapa Taumata Rau  
NEW ZEALAND

## Biological Risk Management and Containment

# IMPORT DECISION REFERENCE GUIDE

# INTRODUCTION

This quick reference guide is designed to assist users to select the correct import permit.

The mentioned import permits are owned by The University of Auckland Containment Facility, which includes the School of Biological Science (Faculty of Science) and Faculty of Medical and Health Science only. **If the importer is not in these containment areas, they will only be able to import unrestricted items**, i.e., items that in this guide would fall under a general permit.

## There are some warnings in the guide which you should heed:

- The Import Health Standard BIOLOGIC.ALL covers many products including kits and media containing BSA. These items do not require an import permit, but they do require a manufacturers declaration. Please check with your DLP for more information.
- Plasmids are sometimes shipped in transformed *E.coli*. Be sure that the plasmid is shipped as pure DNA to qualify under BIOLOGIC.ALL.
- Some human cell lines have been immortalised using SV40 or hTERT and therefore qualify as genetically modified. Check with supplier of cell lines (the ATCC website is a good source of information) as to whether it has been transduced or if it has been derived from a tumour or neoplasm.

Please note: This is document is for guidance only, exceptions may apply as not all the eventualities can be covered. If the item you want to import does not fit into one of the categories mentioned in the guide or you are unsure about which permit to use, please see your DLP (designated laboratory person).

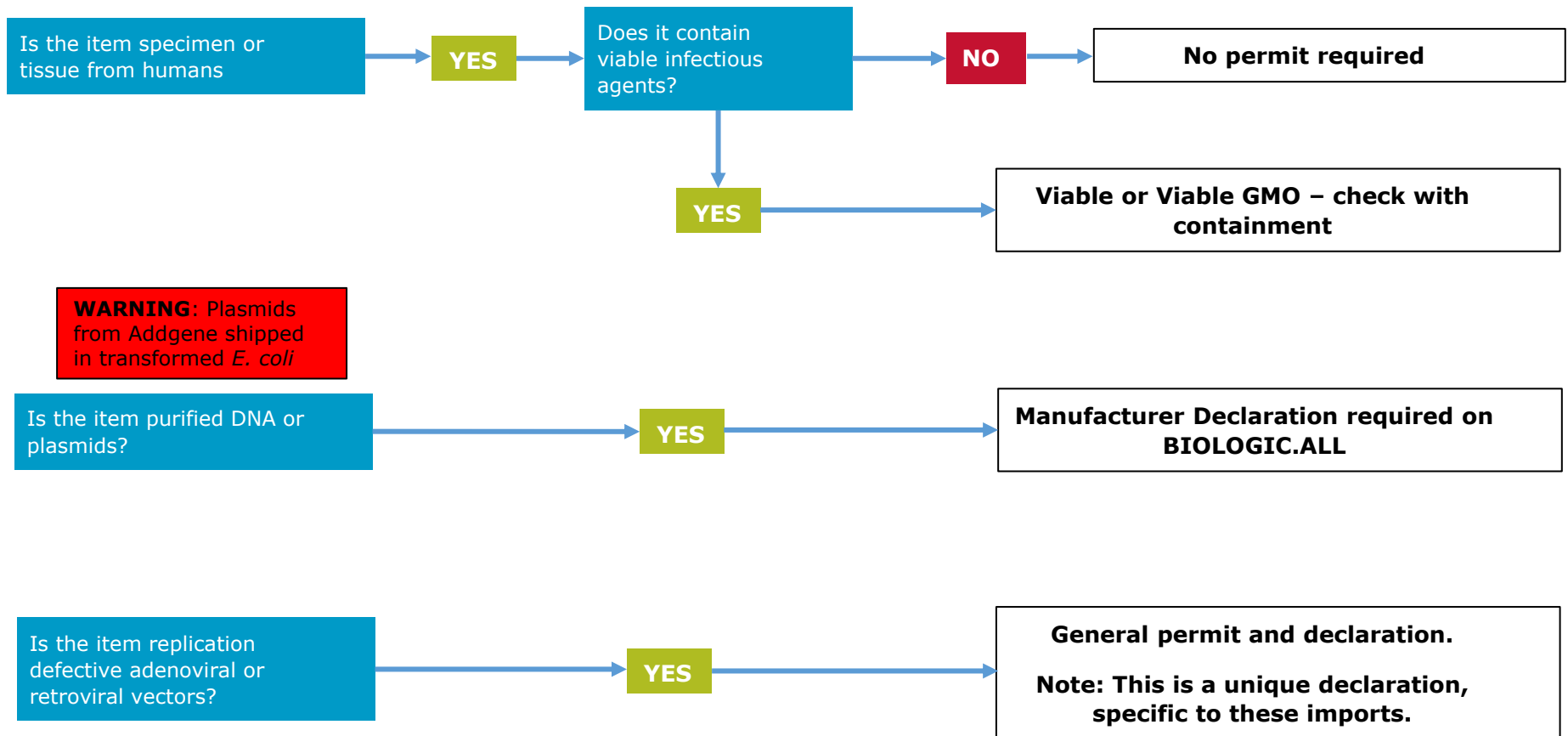
Importation of biologicals can be complex and under the Biosecurity Act can invoke strict liability offenses. Please seek assistance if you are unsure. More detailed guidelines and training aids are available from the Hazard and Containment team at: [Hcteam@auckland.ac.nz](mailto:Hcteam@auckland.ac.nz)

# CONTENTS

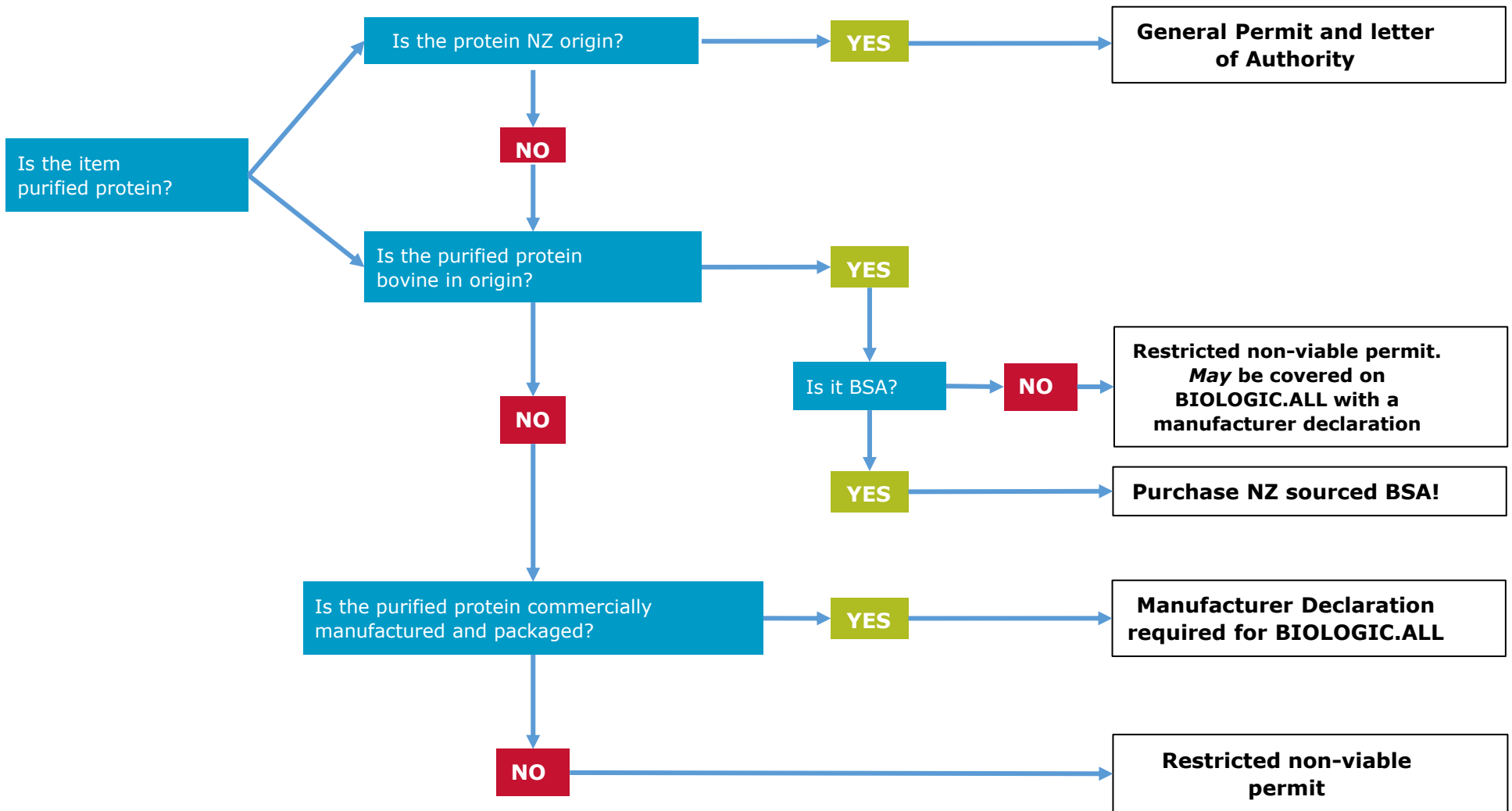
<a href="#">HUMAN SPECIMENS, PURIFIED DNA AND CELL LYSATES</a>	<a href="#">3</a>
<a href="#">PROTEINS</a>	<a href="#">4</a>
<a href="#">ANTIBODIES</a>	<a href="#">5</a>
<a href="#">DETECTION KITS AND MEDIA</a>	<a href="#">6</a>
<a href="#">CELL LINES</a>	<a href="#">7</a>
<a href="#">ANIMAL (Non human) TISSUE</a>	<a href="#">8</a>



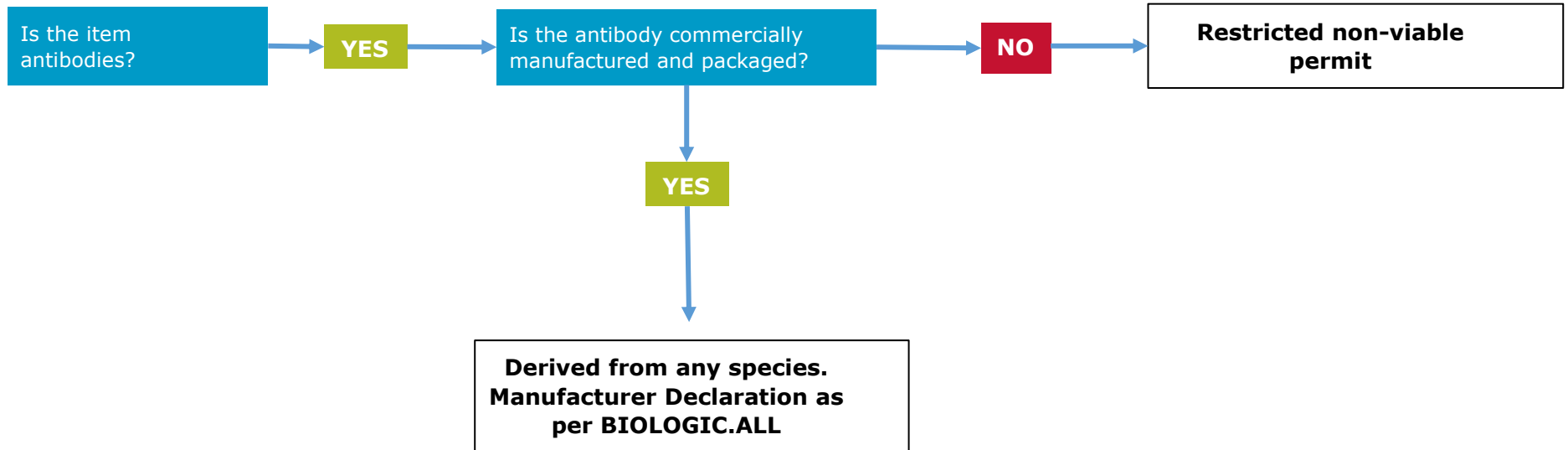
# Human specimens, purified DNA and plasmids



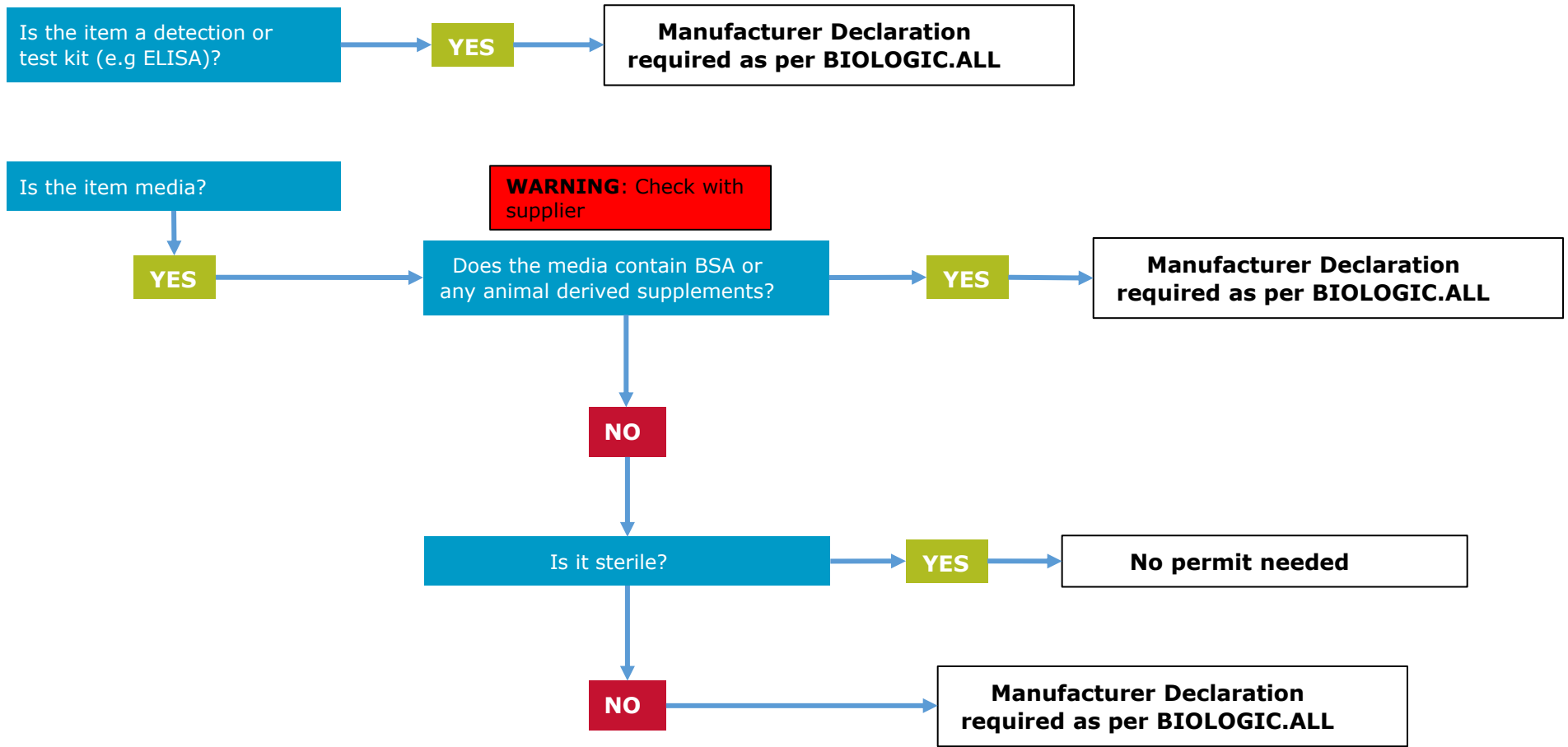
# Proteins



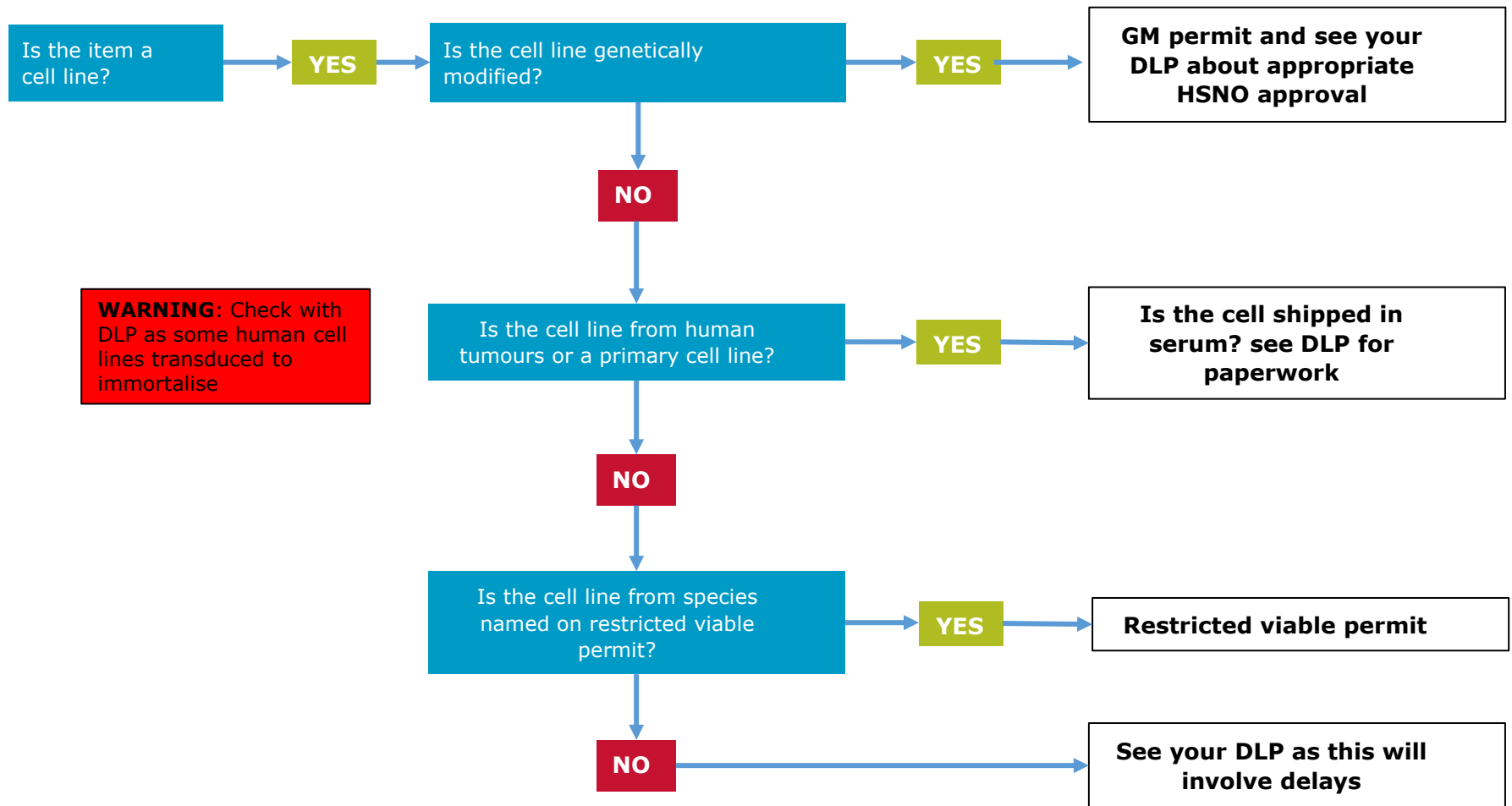
# Antibodies



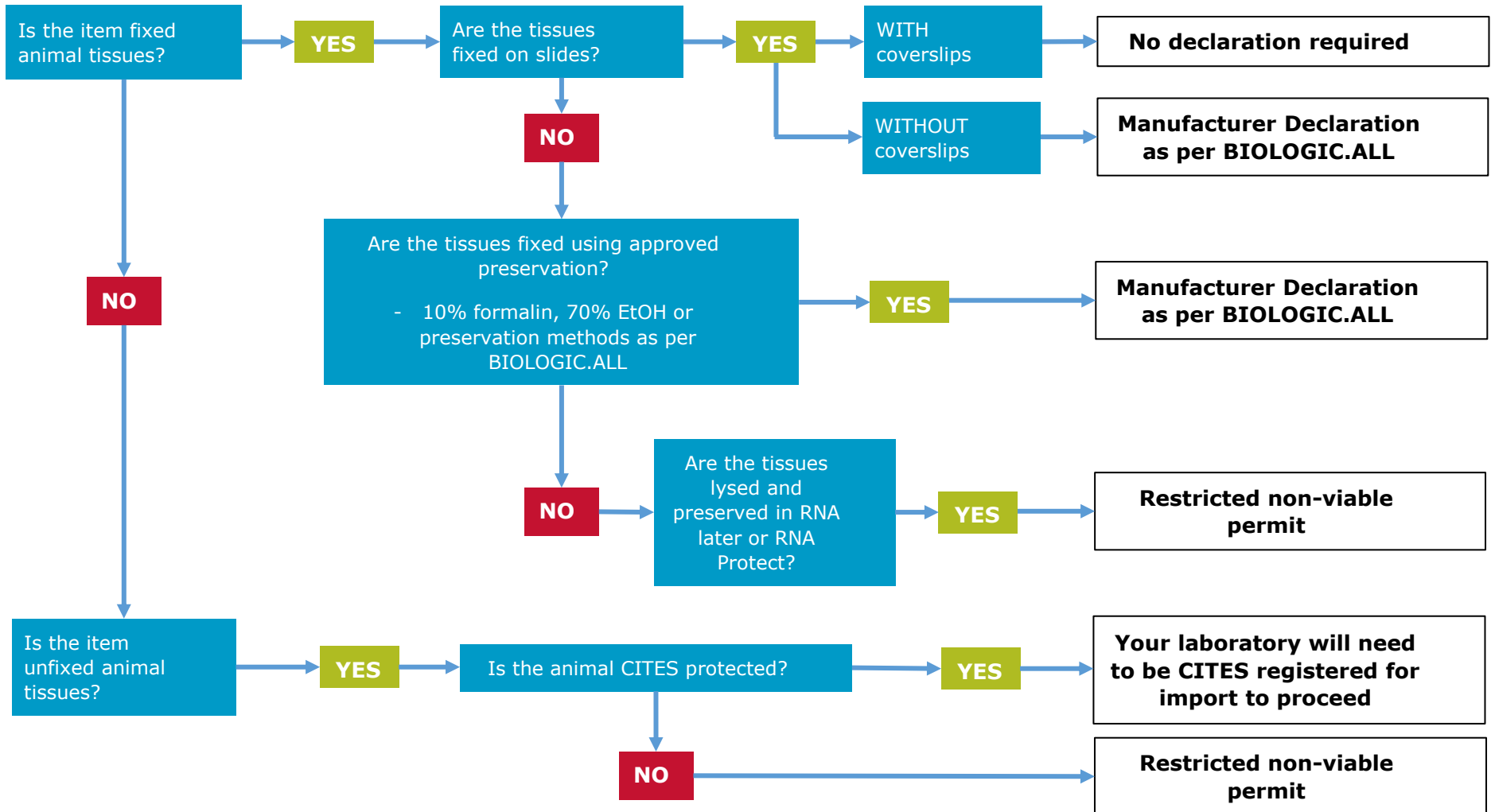
# Detection kits and media



# Cell lines



# Animal (Non human) tissues





Approved by: Associate Director, Health, Safety and Wellbeing  
Document Owner: Associate Director, Health, Safety and Wellbeing  
Content Manager: Hazard and Containment Manager

Version: 3  
Issue Date: June 2026  
Review Date: June 2029