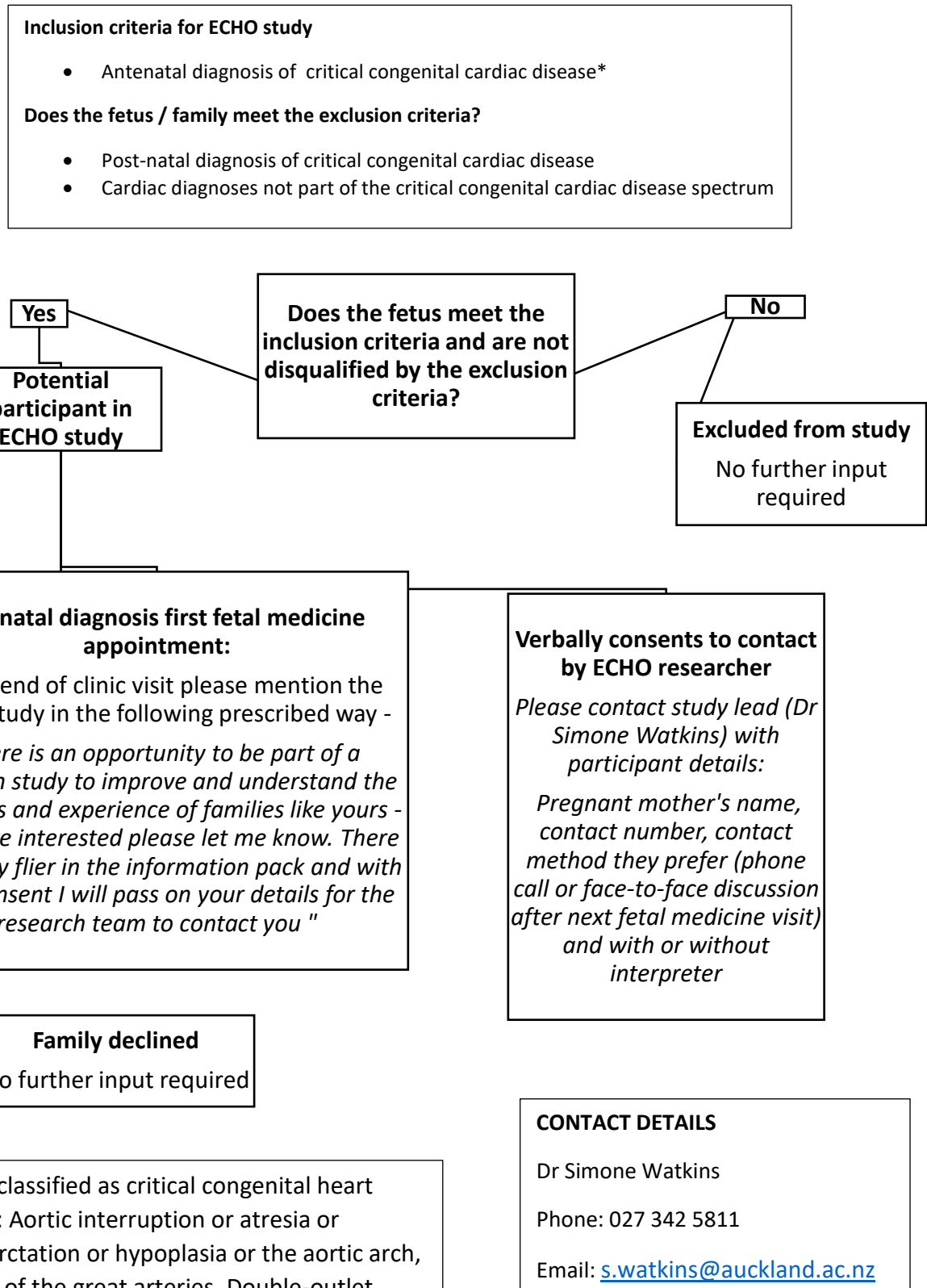


Flow diagram of ECHO study recruitment

Why do outcomes of critical congenital heart disease outcomes in New Zealand differ by ethnicity?



*Heart defects classified as critical congenital heart disease include: Aortic interruption or atresia or hypoplasia, coarctation or hypoplasia or the aortic arch, D-transposition of the great arteries, Double-outlet right ventricle, Ebstein's anomaly, Hypoplastic left heart syndrome, Single ventricle, Pulmonary atresia intact