



Waipapa
Taumata Rau
**University
of Auckland**

Applying for your student visa as a **NEW** student

Student and Scholarly Services



9 June 2026



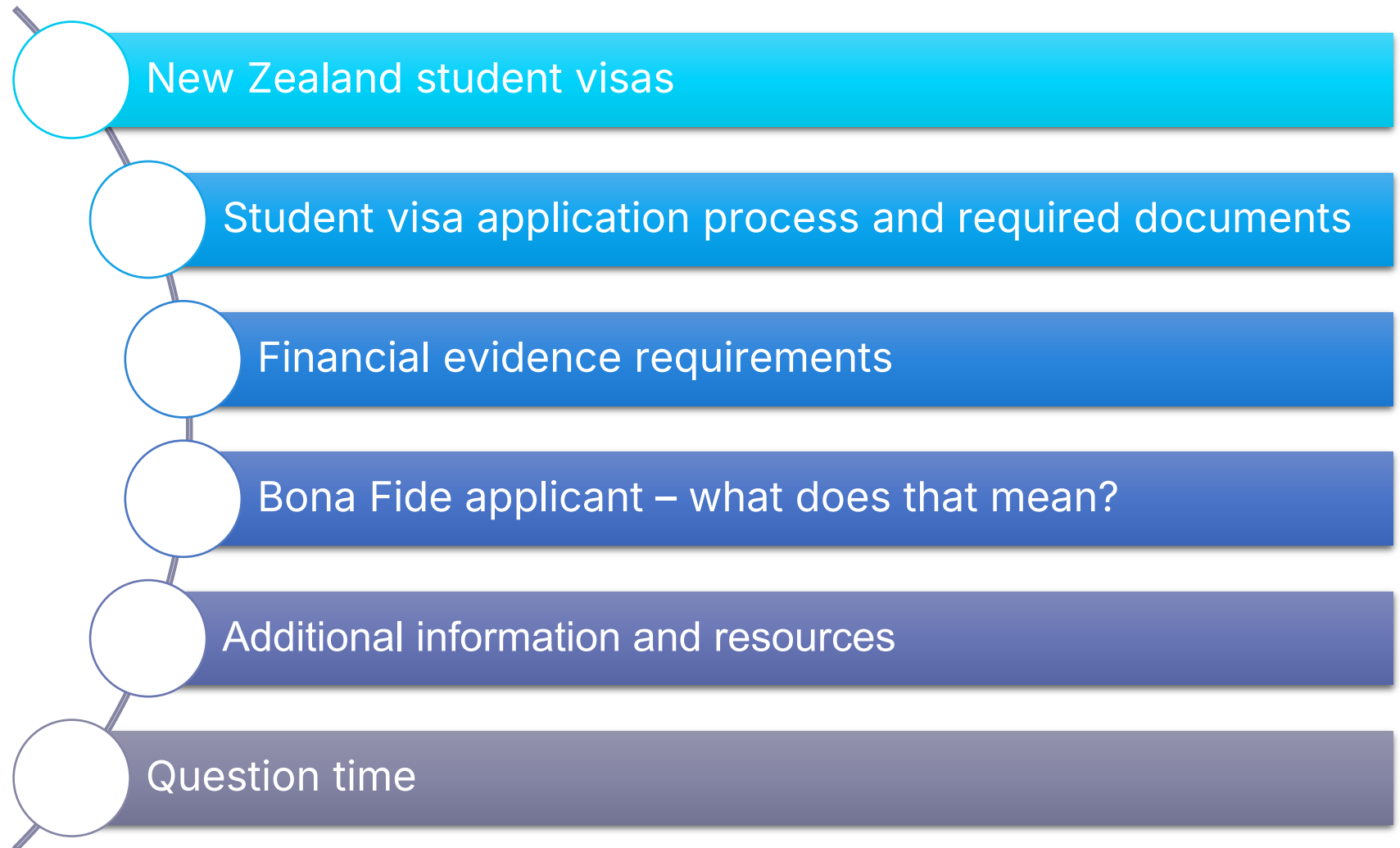
Juliane Adamietz | Student Engagement Coordinator

Housekeeping

- You can ask questions using the Q&A feature
- We answer the questions in the Q&A window or live at the end of the webinar
- You can upvote/like questions if you have a similar question as others
- Be respectful towards our staff
- This webinar is being recorded, and you will be able to watch it again in a few days
- The presentation will also be made available in the next few days
- We will email both links to you
- Please note that this webinar gives a general overview of the process of applying for your student visas. We are unable to discuss individual cases in-depth in this webinar
- Immigration New Zealand = INZ



Session overview



New Zealand student visas

- **Types**
- **Application process**
- **Documents required**

Fee-paying student visa

- Up to four years of full-time study
- Students need to pay the full cost of their study programme, whether by themselves or with the help of family members, scholarships, or others

Foreign government supported student visa

- Students have a foreign government loan or scholarship
- Student's government must have an education agreement with New Zealand and provide a letter setting out the terms of their support, which must:
 - Agree to pay education provider for tuition fees
 - Agree to pay students' living expenses
 - Confirm students are of good character

Exchange student visa

- Students are outside New Zealand
- Have been accepted into an approved student exchange scheme

Pathway student visa

- Up to five years and study up to three courses consecutively on a single student visa
- For instance, students can follow a pathway programme, progressing from a foundation level to a bachelors degree, or pursue academic English courses followed by degree studies within this timeframe

Fee Paying Student Visa

This visa is for students who are paying international tuition fees themselves, or with support from family, a loan, or a partial scholarship. You must have an offer of place from an approved education provider.

[Apply online](#)



Length of stay

Up to

4 years



Cost

From

NZD \$850

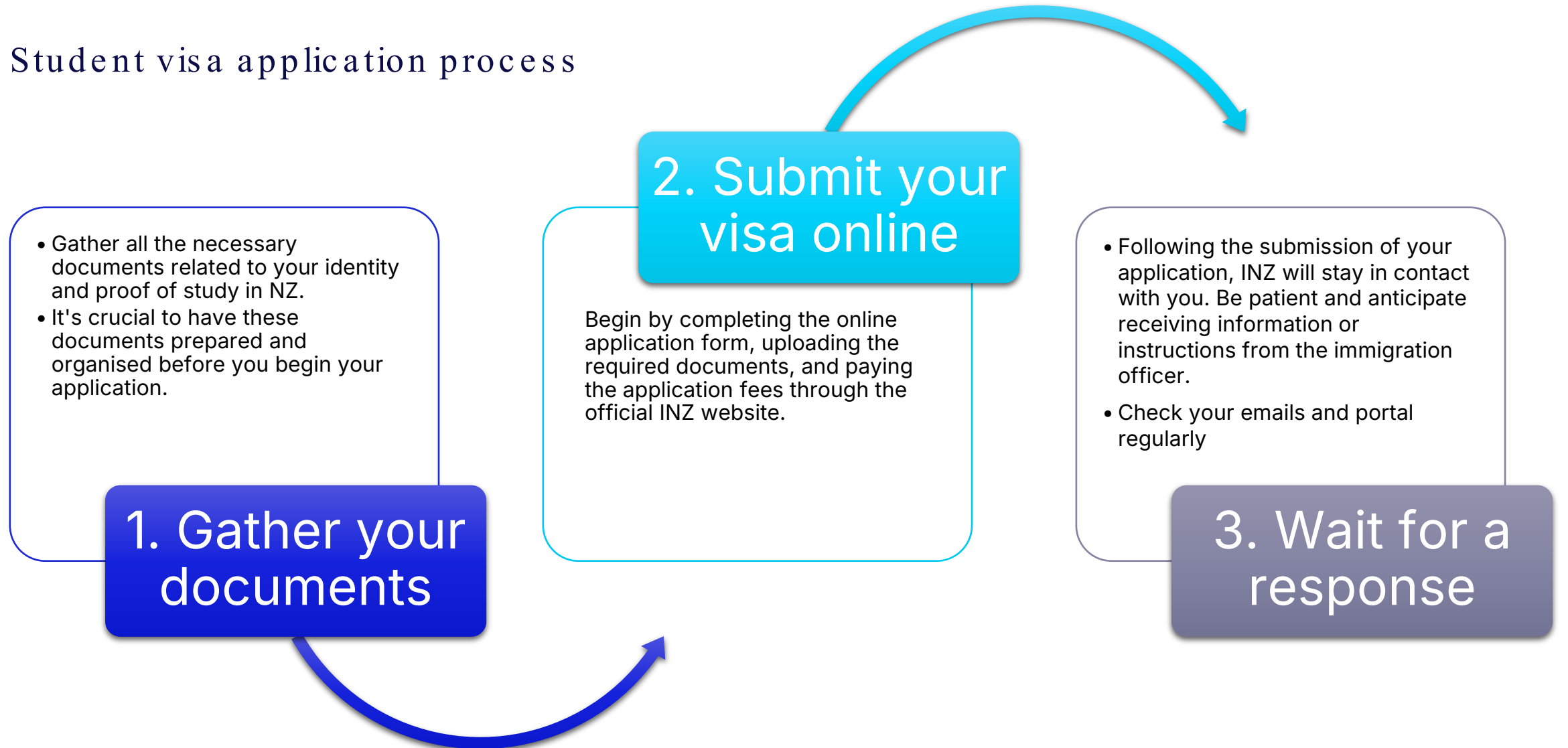


Processing time

80% within

9.5 weeks

Student visa application process



Preparing your documents

Provide the following information with the application

- An unconditional offer from a NZ education provider
- A copy of the passport
- Tuition fee evidence
- Proof of sufficient funds
- Evidence of health and character

Supporting information

- A cover letter/statement of purpose (SOP)
- Evidence of English language ability

[Student visa guide](#)



Financial evidence requirements

Financial planning

Demonstrating your financial capability is an essential and one of the most vital components of a visa application.





Tuition fees

Students must provide evidence that they have paid the tuition fees for the first year of study. Students can provide the following evidence.

- Letter from approved education provider showing fees are paid or that students don't have to pay fees
- Evidence students have a scholarship from their education provider.



Tips

- For applications processed outside New Zealand, evidence of payment is not required until after the application has been approved in principle (AIP).
- If students study a single programme for more than one year, they must provide evidence they have enough money to pay tuition fees for the first year of study, and also how they will pay their tuition fees for subsequent years.

Providing evidence of funds

Option One

- Money held by you or on your behalf

Option two

- Evidence of a scholarship

Option three

- Documents that show your living costs have been paid
- E.g., for a school homestay where you will live with a local family while you study

Option four

- 'Sponsorship Form for Temporary Entry'
- Must be completed by NZ citizen, a NZ residence class visa holder or a NZ organisation

Option five

- A completed 'Financial Undertaking for a Student' form.



Tips

- If you study for more than one year, you **must** provide evidence that you have enough money to support yourself for your first year and show how you will pay your living costs for the following years.
- Evidence of how you will pay for the following years must be money you can access while you are in New Zealand such as savings or family income.

Bona Fide applicant – what does that mean?



Cover letter and Statement of Purpose



Writing a Statement of Purpose (SOP) is an essential part of your application.

This statement should reflect a genuine desire to pursue education and personal development, detailing how the chosen programme aligns with your career goals and aspirations. Be sincere and concise.

This document should include:

1. An outline of your study plans
2. An idea of what you want to do once you have finished your study
3. Reasons why you chose this education provider and programme
4. Academic background
5. Information about what you were doing during any gaps in your recent education or work history
6. Details of how you are paying for your study, including:
 - A summary of the evidence you are providing with your application and where this money has come from. It must show that this money is genuinely available for you to use while you are in NZ
 - An explanation of how you will pay for your future years if you plan to study in NZ longer than one year – we call this a payment plan
 - If you are supported by a financial guarantor or sponsor, explain how you are related to them



Health and character

Depending on how long you plan to stay in NZ and the countries you have previously spent time in, you may also need to provide evidence of your health and character.

Character

- You must be of good character
- You may need to provide police certificates as proof of your good character if you are aged 17 and over, and will stay in New Zealand for more than 24 months (this includes any time you have already spent in NZ), you must provide police certificates from:
 - your country(s) of citizenship
 - any country(s) you've spent more than five years in since turning 17.



Health

- You must be in good health
- You may need to have a chest x-ray, a medical examination or both as proof of your good health.
- Full fee-paying students don't usually need to provide a medical certificate (except for PhD students)
- You will need to get a chest X-ray if you're from, or have spent time in a country where Tuberculosis (TB) is common.



English language proficiency



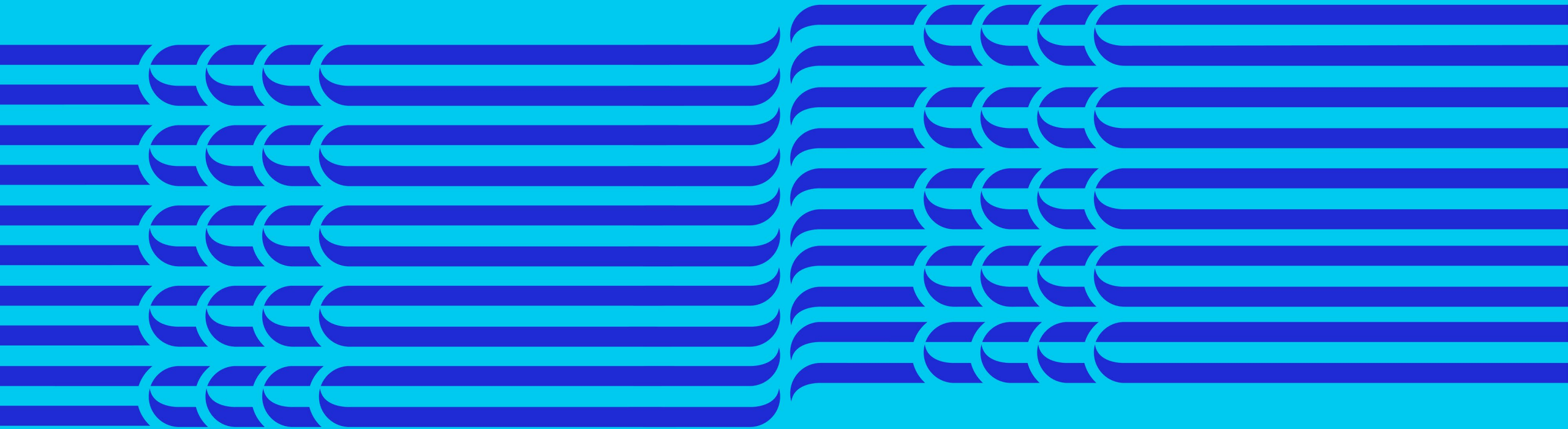
Provide evidence of English language ability – the same evidence that you provided to the intended education provider

Note:

- Evidence of English language proficiency can be a very good indicator of how the student will manage the requirements of an NZ programme that is taught in English
- If your education provider waived English requirements, explain it in your cover letter.
- Pearson Test of English (PTE) – INZ will need access to confirm your results



Additional information and resources





Advantages of a NZ student visa

Students with a valid student visa have the following work rights:

- Work up to 25 hours per week if the student visa was granted from 3 November 2025 onwards
- Full-time work during summer/scheduled vacations
- Masters by research and PhD students have unlimited full-time work rights during study

Post-Study Work Visa

- Depending on the level of your qualification, the visa is valid for 1, 2 or 3 years



Partner of the student visa holder

- Partners of Masters and PhD students are eligible for an open work visa
- Partner of students studying Level 7 or 8 qualifications that are specified on the Green List or the List of qualifications eligible for a post-study work visa are eligible for open work visas.
- If partners of students are on an open work visa, their dependents can enrol in any public school (though some schools may have zoning requirements) and pay domestic tuition fees, but they must apply for and be granted a 'dependent student visa'



Processing times and when to apply

Most student visa applications for university students are processed within four weeks if a complete application has been submitted:

- Check your application status regularly in the INZ portal
- Check your email regularly; INZ may ask for further information by email
- [Why some visa applications take longer to process than others](#)
- [Visa processing times for international students](#)



When to apply

We recommend applying **three months in advance** of your intended travel, but this will not be possible for everyone.

There is no deadline for your application, but you should allow at least eight weeks for visa processing.

INZ now allows **applicants outside NZ** to apply for a student visa using a conditional offer of place if final academic results or other conditions (e.g., IELTS scores) are pending.

They will begin assessing these applications and may grant approval in principle (AIP).

An unconditional offer of place is required before a visa can be granted. **More details**



Translations of documents

- Ensure supporting documents are translated into English
- Providing English translations of supporting documents means INZ can process your application faster
- [Providing English translations of supporting documents](#)

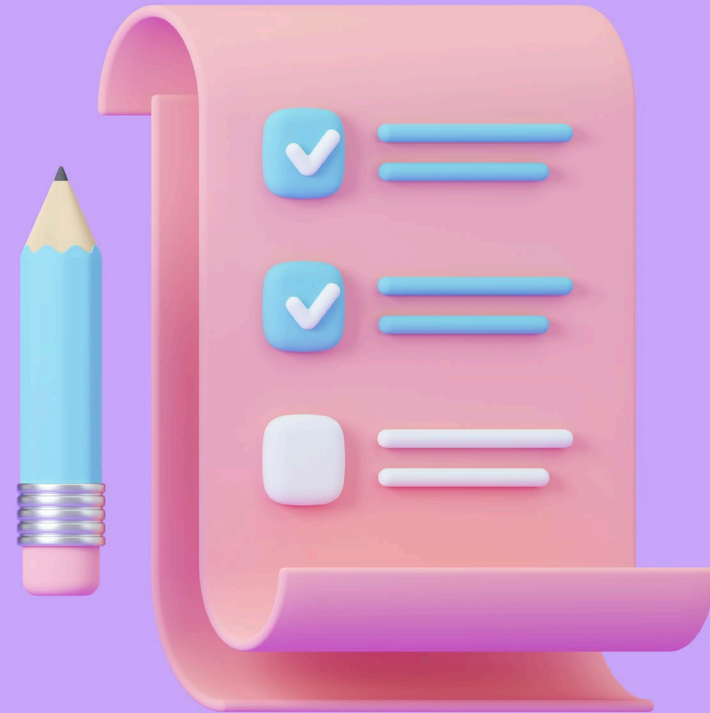
Photo submission

- All identity photos must be natural and unaltered.
- You must not use editing or artificial intelligence (AI) tools to enhance their images.
- If your photo does not meet INZ standards your visa application will be delayed or could be declined.



Choosing a programme and institution

- Choosing the right programme and institution is crucial
- Make sure your selected institution is accredited and offers programmes aligned with your academic and career goals
- Your choice will not only shape your academic journey but also play a role in your visa application process



Visa information

Find out how to apply for your student visa with step-by-step instructions, facts about Post-study work visa regulations and other useful information relating to your immigration status.



How to apply for a student visa

Find out how to submit your student visa application to Immigration New Zealand with our detailed guides.

Take the next step >



Frequently asked questions

We collated a series of questions and answers to help you understand the visa process for international students.

Get the answers >



Visa evidence

You have to supply evidence of your visa to the University so we know you are eligible to study.

Submit your visa >



Work after study

If you want to stay in New Zealand to work after your studies, you need to fulfil all the requirements.

Discover more >



Part-time enrolment

There are a few important things to know when considering studying part-time as an international student.

Read more >



Visa webinars

Details about our upcoming visa information events to help you prepare for future visa applications.

Find out more >

How to apply for a student visa



How to apply for your student visa as a new student

Step-by-step guidance to apply for your University of Auckland visa.

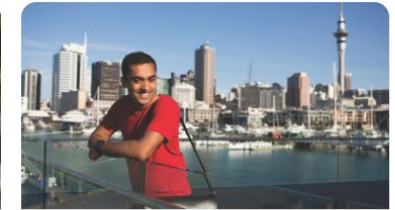
Find out more >



Applying for student visa as a continuing student

Use this guide if you need to renew your visa or have studied with us in the past.

More information >



Student visa applications for PhD students

Guidance for international PhD candidates to submit your student visa application.

Get started >

www.auckland.ac.nz/visa-information

NZeTA, visitor and working holiday visas

- If you study a programme that **is longer than three or six months in total** (applies to most University programmes), you should wait to enter New Zealand on the appropriate student visa.
- If you travel to New Zealand visa-waiver or on a visitor visa with the intent of applying for a student visa onshore, you may not be considered a genuine visitor which may result in problems with future visa applications
- You will not be able to start your studies until you have a visa with the appropriate study conditions, which may mean a delay and issues with access to university services
- If in doubt contact Immigration New Zealand



Student visa conditions

A student visa (whether granted onshore or offshore) allows you to study full-time in New Zealand for a limited period of time.

A student visa may have conditions you must meet which may include:

Full-time enrolment requirements:

Semester:

It is strongly recommend enrolling in at least 60 points of on-campus courses per semester. While 45 on-campus points may qualify as full-time under INZ guidelines, 60 points support better academic planning and timely progression.

Quarter:

You must be enrolled in 30 on-campus points or more per quarter (this is usually two or more courses)

Exception: If you are in your final semester/quarter and have fewer courses left to complete your programme. This exception is only permitted once by INZ. For more information, please see:

[Learn more about studying part-time](#)

Other conditions

- the name of the programme you are allowed to study
- the name of the educational provider
- the New Zealand location of the provider,
- the requirement to hold appropriate health and travel insurance

Important

- Read your visa letter when you receive it to ensure the details are correct and you understand it
- You **must provide evidence of your visa** to the University by the first day of term

Health and travel insurance

- **Compulsory** for all international students in New Zealand
- **Part of your visa conditions**
- You are **automatically charged** with this insurance when you enrol in your courses (within 24-48 hours)
- **Studentsafe Inbound University** is the name of the policy
- You need to pay the insurance fee together with your tuition fees
- Insurance **cover usually starts 31 days prior to the start of term**, including transit from your country of origin to New Zealand
- Your **Student ID number** is also your insurance number
- Individual insurance certificates are emailed to your university email address in week four after term start
- If you need proof of your insurance prior to that, you can download the [group policy document](#)



Health and travel insurance



- [Insurance at the University of Auckland >](#)
- [Studentsafe University policy >](#)
- [Family insurance >](#)
- [Insurance waivers >](#)
- [Making an insurance claim >](#)
- [Pre-existing medical conditions >](#)
- [Change in circumstances >](#)
- [Travelling overseas >](#)
- [Offshore student insurance >](#)



Insurance at the University of Auckland

All international students must have health and travel insurance while studying in New Zealand. These guidelines apply to international students only.

[Discover more >](#)



Studentsafe University policy

Find out detailed information on the university's insurance policy for international students.

[Find out more >](#)



Insurance waivers

You may be eligible for an insurance waiver if you already have an alternative insurance policy.

[Check it out >](#)



Making an insurance claim

Follow these simple steps to lodge a Studentsafe inbound insurance claim.

[See how >](#)



Family insurance

Learn more about adding your family to your Studentsafe inbound University insurance policy.

[Learn more >](#)

Studentsafe
Medical & Travel Insurance

**Inbound
University**



Medical and travel insurance cover for international students studying at a university in New Zealand

Effective from 1 November 2024

www.insurancesafenz.com

InsurancesafeNZ

Brought to you by Marsh

www.auckland.ac.nz/is-insurance

In need of assistance



Email: int-questions@auckland.ac.nz



www.immigration.govt.nz



You can contact INZ for general information:
6am-10pm NZT, Monday to Friday, excluding NZ public holidays

- Toll-free from NZ landline only: 0508 558 855
- **Rest of the world:** +64 9 914 4100





What's next

- **Accept your offer** by the deadline
- **New student emails** – will be send to you with valuable information to give your studies the best start
- **Prepare your visa application** as soon as possible
- Arrive in Auckland in time for **Orientation:**
 - Week prior to term start
- Check out any additional resources

Reminder:

- Read your visa letter when you receive it to ensure the details are correct and you understand it
- You **must provide evidence of your visa** to the University by the first day of term

Additional resources

- www.auckland.ac.nz/international-student-support
- www.auckland.ac.nz/visa-information
- www.immigration.govt.nz
- [Student visa guide](#)
- [Students who are under 18 years of age at start of term](#)
- [New Zealand Immigration Advisers Authority](#)

Contact us:

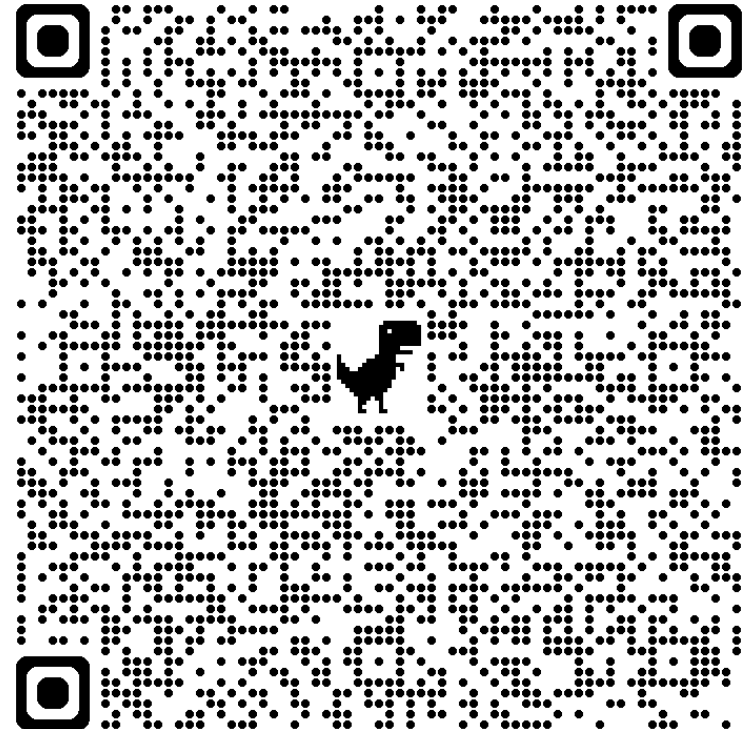
- int-questions@auckland.ac.nz
- Include your **Student ID** in your email

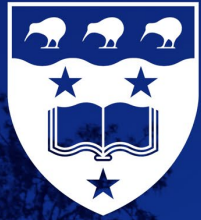
Disclaimer

- The slides provided are for informational and educational purposes only.
- The information included in these slides is current as of **9 June 2026** and is subject to change.
- The instructions that apply will be determined by the date on which you submit your visa application.
- For the most up-to-date and accurate information, please refer to the Immigration New Zealand website at www.immigration.govt.nz. This website should always be your primary source for correct and current information.
- Feel free to reach out to Immigration New Zealand for any visa enquiries.
- If you find yourself uncertain about your immigration situation, seeking advice from a [Licensed Immigration Adviser](#) or lawyer is also an option. Community Law Centres may be able to assist you, depending on your circumstances.

Webinar: Preparing for life and study in Aotearoa New Zealand

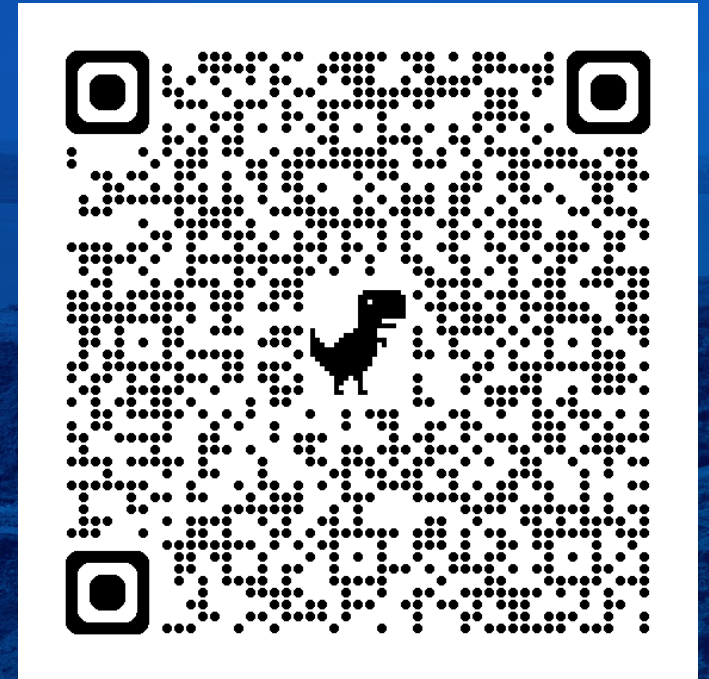
- **Thursday, 11 June 2026, 3pm NZT**
- **Register via the QR code if you haven't yet**
- **We'll cover:**
 - **Preparations for departure:** Visas and insurance, what to bring, customs and biosecurity, accommodation, airport transfer
 - **Life in Auckland and New Zealand:** Getting around, bank accounts, work rights and employment, safety
 - **New Zealand study environment**
 - **Staying connected**
 - **University 101:** Orientation, support services, enrolment





Waipapa
Taumata Rau
**University
of Auckland**

**The slides and recording of
this webinar will be uploaded
here in a few days:**





Waipapa
Taumata Rau
**University
of Auckland**

Ngā mihi mō ngā tau kei mua i te aroaro
Good luck for the future

See you soon in Auckland!