




Waipapa
Taumata Rau
**University
of Auckland**

Preparing for life & study in Aotearoa New Zealand

Student and Scholarly Services

 11 June 2026

 Juliane Adamietz | Student Engagement Coordinator

Housekeeping

- Ask questions using the Q&A feature. We answer the questions in the chat window or live during the webinar
- You can “like” other people questions, if you have a similar one or are really interested in hearing the answer
- Avoid sharing personal information (e.g. ID number or Username) when asking a question as it may be visible to all participants
- This webinar is being recorded, and you will be able to watch it again in the next few days on our website
- The presentation will be made available for download in the next few days
- We will email both links to you as soon as they are ready



Session overview



Preparations for departure

Student visas

- You need an appropriate visa to enter and study in New Zealand
- Submit your visa application through the Immigration New Zealand Online portal
- Apply early to ensure processing is completed in time for you to be in New Zealand by start of semester, preferably orientation week
- Majority of students will apply as “fee paying” student visa category
- Use our step-by-step guides for instructions and required paperwork



NZeTA, visitor and working holiday visas

- If you study a programme that **is longer than three or six months in total** (applies to most University programmes), you should wait to enter New Zealand on the appropriate student visa.
- If you travel to New Zealand visa-waiver or on a visitor visa with the intent of applying for a student visa onshore, you may not be considered a genuine visitor which may result in problems with future visa applications
- You will not be able to start your studies until you have a visa with the appropriate study conditions, which may cause a delay and issues with access to university services



Visa information

Find out how to apply for your student visa with step-by-step instructions, facts about Post-study work visa regulations and other useful information relating to your immigration status.



How to apply for a student visa

Find out how to submit your student visa application to Immigration New Zealand with our detailed guides.

Take the next step >



Frequently asked questions

We collated a series of questions and answers to help you understand the visa process for international students.

Get the answers >



Visa evidence

You have to supply evidence of your visa to the University so we know you are eligible to study.

Submit your visa >



Work after study

If you want to stay in New Zealand to work after your studies, you need to fulfil all the requirements.

Discover more >



Part-time enrolment

There are a few important things to know when considering studying part-time as an international student.

Read more >



Visa webinars

Details about our upcoming visa information events to help you prepare for future visa applications.

Find out more >

How to apply for a student visa



How to apply for your student visa as a new student

Step-by-step guidance to apply for your University of Auckland visa.

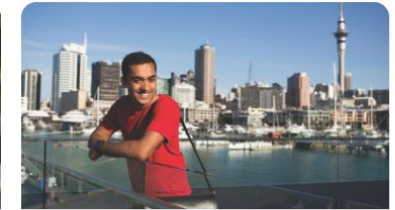
Find out more >



Applying for student visa as a continuing student

Use this guide if you need to renew your visa or have studied with us in the past.

More information >



Student visa applications for PhD students

Guidance for international PhD candidates to submit your student visa application.

Get started >

www.auckland.ac.nz/visa-information

Health and travel insurance

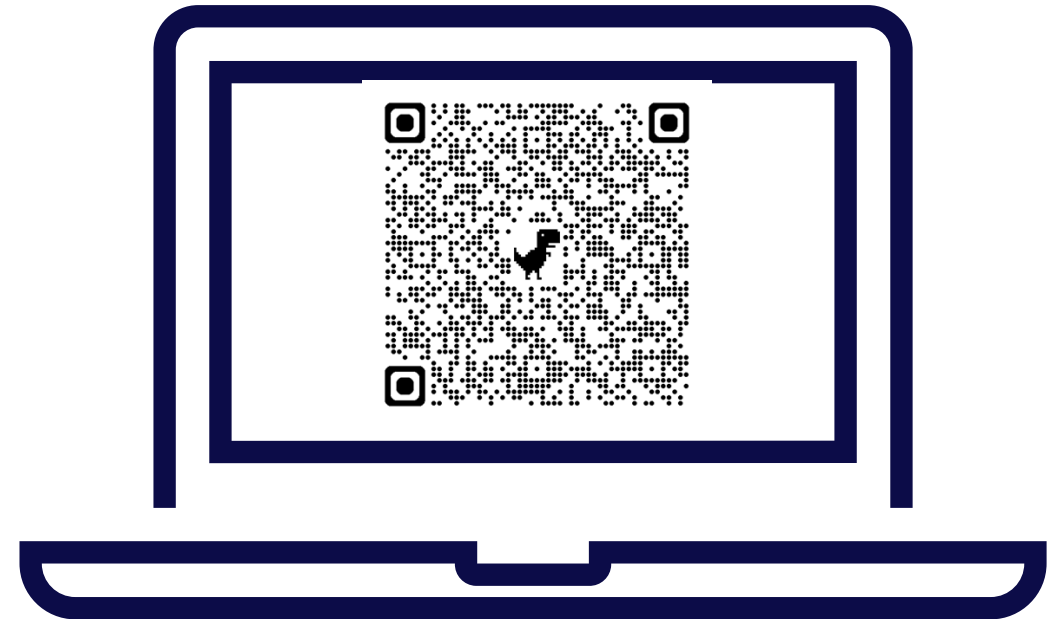
- **Compulsory** for all international students in New Zealand
- **Part of your visa conditions**
- You are **automatically charged** with this insurance when you enrol in your courses (within 24-48 hours)
- **Studentsafe Inbound University** is the name of the policy
- You need to pay the insurance fee together with your tuition fees
- Insurance **cover usually starts 31 days prior to the start of term**, including transit from your country of origin to New Zealand
- Your **Student ID number** is also your insurance number
- Individual insurance certificates are emailed to your university email address in week four after term start
- If you need proof of your insurance prior to that, you can download the [group policy document](#)



Pre-existing medical conditions



- You are **not** automatically covered for pre-existing medical conditions
- Refer to the [policy document](#) to know what is considered a pre-existing medical condition
- To receive additional cover for pre-existing medical conditions you need to submit a Medical Risk Assessment form
- You must submit this form within 31 days of arriving in NZ
- Read the info on our website carefully



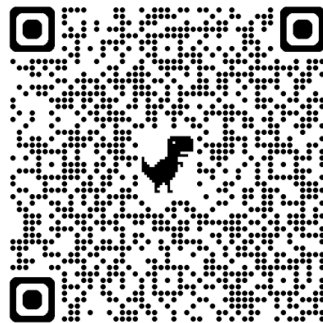
[Pre-existing medical conditions](#)

Family insurance



- You can add immediate family member(s) such as your child, children or spouse to your Studentsafe Inbound University policy at an additional cost
- Deadlines apply – usually second Friday of the term
- Highly recommended if immediate family members joining you permanently or for a long period in NZ
- **Reapply each new enrolment term**

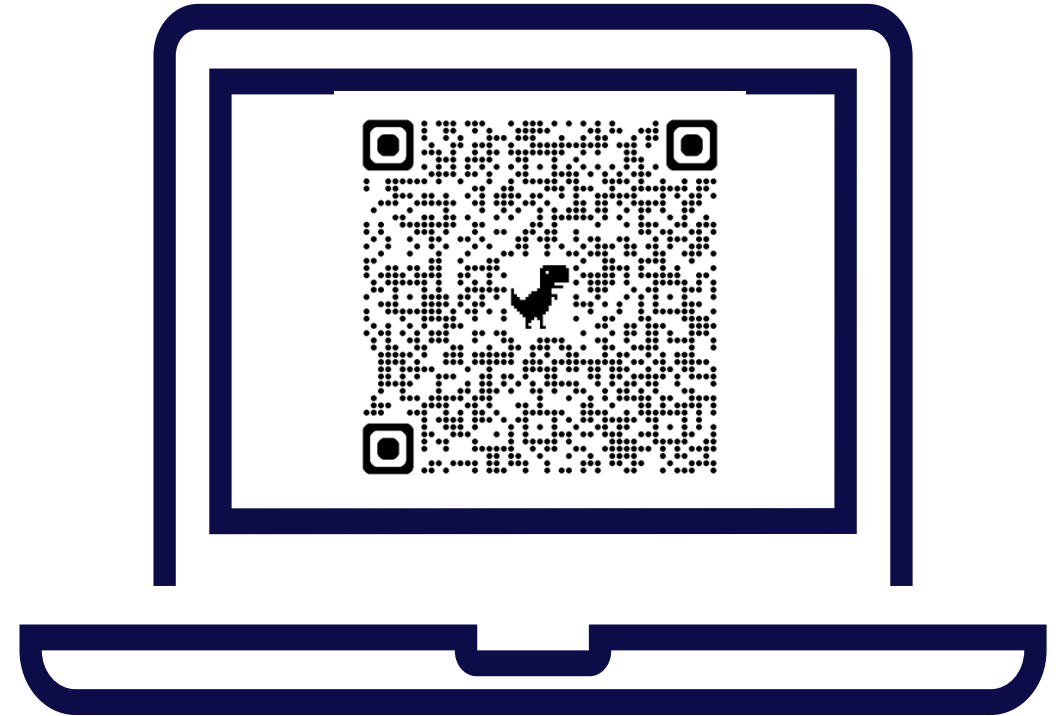
[Family insurance](#)



Insurance waivers



- You may be eligible for an insurance waiver if you already have a **compliant alternative insurance policy** that can be used **instead of Studentsafe Inbound University**
- The list of compliant alternative policies and other criteria for an insurance waiver can be found on our website
- Deadline: Second Friday after term start



[Insurance waiver](#)

Health and travel insurance



- Insurance at the University of Auckland >
- Studentsafe University policy >
- Family insurance >
- Insurance waivers >
- Making an insurance claim >
- Pre-existing medical conditions >
- Change in circumstances >
- Travelling overseas >
- Offshore student insurance >



Insurance at the University of Auckland

All international students must have health and travel insurance while studying in New Zealand. These guidelines apply to international students only.

[Discover more >](#)



Studentsafe University policy

Find out detailed information on the university's insurance policy for international students.

[Find out more >](#)



Insurance waivers

You may be eligible for an insurance waiver if you already have an alternative insurance policy.

[Check it out >](#)



Making an insurance claim

Follow these simple steps to lodge a Studentsafe inbound insurance claim.

[See how >](#)



Family insurance

Learn more about adding your family to your Studentsafe inbound University insurance policy.

[Learn more >](#)

Studentsafe
Medical & Travel Insurance

Inbound
University



Medical and travel insurance cover for international students studying at a university in New Zealand

Effective from 1 November 2024

www.insurancesafenz.com

InsurancesafeNZ

Brought to you by Marsh

www.auckland.ac.nz/is-insurance

Packing your luggage

Clothing

- **Warmer months** (Nov-April): lightweight clothing, beach clothing and swimwear, sunhat, sunglasses
- **Cooler months** (May-Oct): Warm clothing, hat, scarf, gloves
- University students in NZ have a casual standard of dress
- Bring some smart clothing for formal events, presentations, or job interviews.



Medicine

- Ensure you have access to any prescription medication you need: **Bringing medicines into New Zealand**
- **When bringing prescription medication into NZ:**
 - Declare the medicine on your passenger arrival card
 - Bring a copy of the prescription, or a letter from your doctor (in English)
 - Keep the medicine in its original container
 - Have no more than a 3 months supply

Appliances

- Electricity is supplied throughout NZ at 230/240 volts (50 hertz) and power outlets only accept flat two or three pin plugs.
- You will need an adaptor for any appliances you bring from home.
- You can buy this when you arrive or before you leave your home country.
- We recommend to buy small appliances (such as a hairdryer) when you get here rather than bringing them with you.



Customs and Biosecurity

Prohibited Items

NZ has strict laws on what you are permitted to bring into the country. Items that are prohibited/restricted include:

- Drugs (unless they have been prescribed to you)
- Firearms and weapons
- Flammable goods (such as gas cookers or lighters)
- More than NZ\$10,000 in cash (or the equivalent in a foreign currency)
- Animals or insects (alive or dead)
- Feathers, shells, plants, or flowers
- Fresh foods, including meat and fruit
- Some packaged goods, such as certain cheeses



Biosecurity

To keep the country free from pests and diseases, strict quarantine laws are in place at all New Zealand international airports.

You must:

- Declare all food, plants, and animal goods upon arrival
- Any camping equipment, hiking boots, or sports gear needs to be inspected
- Failing to declare biosecurity risk goods, even if by accident, can result in an instant NZ\$400 fine
- [Ministry for Primary Industries](#) has further information, available in several languages.



Arriving in New Zealand

- Your visa will already be checked when you board your flight to NZ
- Upon arrival in NZ ensure you have completed the **New Zealand Traveller Declaration** – you can start completing the form 24 hours prior to commencing your trip
- Have all your important documents available either on your phone or printed – make sure you can access them in case you haven't got internet access
- You will clear Immigration first
- Once you have your luggage you clear customs and biosecurity
- Once that is complete you have entered NZ



Tip: NZ border staff are usually very friendly and welcoming. Ask them if you are unsure about anything

Travelling to New Zealand?

You'll need to do a **New Zealand Traveller Declaration (NZTD)**.

Start now



[TravellerDeclaration.govt.nz](https://travellerdeclaration.govt.nz)

Te Kāwanatanga o Aotearoa
New Zealand Government

New Zealand
Traveller
Declaration | Whakapuakanga
Tangata Haere ki
Aotearoa

Getting to your accommodation

After completing all entry formalities, you enter the arrival hall where you will have different transport options to choose from to get to your accommodation

- [Public transport](#)
- [Rideshare](#)
- [Taxis or shuttle service](#)
- The staff at the Airport Help Desks will also be able to assist
- Public transport will be limited late at night or for early morning arrivals
- Familiarise yourself with the different options prior to departure
- Ensure you have your accommodations correct address handy



University accommodation

- Catered and self-catered options
- Walking distance to campus
- Utilities such as water, electricity and internet are included
- Built-in resident support
- A vibrant social experience
- Study areas for focus
- Free Recreation Centre membership
- Safe and secure
- Laundry facilities



Non-university accommodation

- Renting a studio or apartment
- Flat sharing or 'flatting'
- Hostel facilities
- Homestay and host families

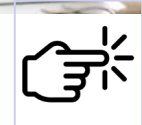
Important advice:

- View the property **in-person**
- Have a **written tenancy contract**
- **Read** the contract **before** signing
- Know your rights and responsibilities
- Ask questions

Temporary accommodation

There may be a situation where you will need to book some temporary accommodation before moving into something long-term.

- Hotel or motel
- Hostel or backpackers
- Bed and breakfast



[More info](#)

Navigating your study life



Enrolment – new international students



- New international students do not need to be enrolled in their courses when applying for their student visa
- But you need to enrol early so you don't miss out on your desired courses
- You must be enrolled in at least **three courses (or a minimum of 45 points)** per semester, to be eligible for a student visa.
- Enrol in the full academic year if possible or as soon as enrolments open

How to enrol: www.auckland.ac.nz/enrol



IT Essentials

Logging in

Username (UPI) and password

Username was sent to you after you completed your application for admission

Password you created when you applied for admission – always keep private

Student Services Online

Enrolment, finances, timetable, grades

Keep contact details up to date - ensure to add NZ address when you arrive

Also referred to as SSO

Student email

Check regularly

Activated 24 hours after you enrol in a course

Your email will be <username>@aucklanduni.ac.nz.

Canvas

University's web-based learning management system

Info about your courses, access reading materials, learning resources

Tests, participate in online discussions, and communicate with your lecturers, tutors, and classmates

What to expect of the University learning environment

- Groups work on assessment tasks is normal
- Lecturers provide some direction and will also expect independent work
- Think critically and creatively
- Class discussion are common – it is expected students add o them
- Ask questions if you are unsure about something – in class or during office hours
- Referencing is essential
- Using good academic English
- Explore the resources that assist you in achieving the above

THE UNIVERSITY OF AUCKLAND
NEW ZEALAND

Learning essentials

Develop your research and study skills

SEARCH

Learning at University	Key study skills	Presenting your work
Reading effectively	Finding information	Writing effectively
Exams and tests	Referencing	Support services

www.learningessentials.auckland.ac.nz

Academic integrity

What is academic integrity?

- Honesty that you have in your studies and assessments
- Key foundation to being a member of the University's academic community
- Having academic integrity shows that you respect the work of other people, such as their:
 - Ideas
 - Words
 - Image
 - Code



Academic Integrity Course

- You are automatically enrolled into the online Academic Integrity Course or ACADINT A01
- You need to complete it in your first semester – it is compulsory for all new students
- The course is designed to increase your understanding of:
 - Academic integrity
 - University rules regarding academic conduct
 - How we manage academic misconduct

Staying connected and getting support



Student support services

Visas & insurance support

Academic & learning support

Physical & mental wellbeing support

Careers & employability support



<https://youtu.be/zP2GS66IAac>

Student Hubs

- Student information centre
- Course selection, enrolment, degree planning and structuring your studies.
- Advice with fees, transcripts, and visa enquiries.
- University support options, including connection to wellbeing, disability, and engagement services
- Library services and student IT support.
- Campus cards, AT Student Concessions

welcome
- TO THE -
**Student
Hubs**

Ask us...
about **your studies, university life,**
our **library services** or our
academic workshops.

auckland.ac.nz/student-hubs
• • •

UNIVERSITY OF
AUCKLAND
Waipapa Taumata Rau
NEW ZEALAND

www.auckland.ac.nz/student-hubs

Campus Life



- Orientation week with dedicated sessions for international students
- More than 200 student run clubs, associations and societies on campus
- Buddy programme for international students
- Study spaces around campus
- State of the art wellness and recreation centre: Hiwa
- Social events
- Cafes and food court
- Childcare facilities at an additional cost



Orientation



Semester Two 2026:

- Tuesday 14 July – Postgraduate Orientation
- Wednesday 15 July – International Orientation
- Thursday 16 July – Undergraduate Orientation

International students should attend International **and** Postgraduate or Undergraduate Orientation.

Quarter for 2026:

TBC – in the week before the quarter starts (28 Sept)



Life in Auckland and New Zealand





kia ora

Tāmaki Makaurau



Cost of living

Varies between countries due to differences in pay, taxes and the availability of goods and services. It changes over time because of inflation, economic conditions and shifts in supply and demand.

To calculate your cost of living, consider these expenses:

- housing - rent payments
- food - groceries and dining out
- transportation - public transport, vehicle expenses
- health care - insurance, medical costs
- utilities - electricity, water, internet.



Useful resources to check out:

- [Cost of living in New Zealand - INZ](#)
- [Cost of living – NauMai NZ](#)
- [Cost of living in Auckland - UoA](#)
- [Comparison University accommodation vs renting non-university accommodation](#)

Transport options

Auckland Transport (AT)

- Auckland's public transport provider
- Full-time students can get 40% with their student concession
- Buses, trains, ferries
- Buy and set up AT HOP card with student concession in the first few days after arrival
- Download the AT Mobile App



Other modes of transport

- Car
 - Ensure you are holding a valid driver's license, certain conditions apply to drive on an overseas licence → check NZTA.govt.nz
 - Familiarise yourself with the roads and weather conditions in NZ
- Bicycles and e-Scooters – wearing a helmet is compulsory, road rules apply
- Walking
- Auckland is very hilly

Banking, tax and employment

Opening a bank account in NZ – what you need?

- Passport details
- Proof that you are an enrolled student in New Zealand (e.g. Offer of Place or a student identity card)
- Proof of address (check with the bank directly what documents they accept)
- Your Tax Identification Number from your home country
- You can start this process from your home countries



[Banking in New Zealand](#)



Tax and employment

- Adhere to the work conditions in your work visa;
- Minimum wage: NZD\$23.50 per hour before tax
- If you want to work, you'll require an IRD (Inland Revenue Department) number, this will be your NZ tax number
- You can apply for one once you have opened a bank account and you need:
 - Passport details,
 - Most recent overseas tax number,
 - Your INZ Application Number (from your visa letter),
 - Your NZ bank account number and your name on the account



Safety advice and emergency services

111

Emergency services

- Police
- Fire Service
- Ambulance
- If you have difficulty hearing or talking on the phone you can [register here](#) for the 111 TXT service.

105

Non-urgent incidents

- Incident already occurred; no immediate danger
- E.g. stolen/lost phone; break-in and the offender is not there anymore
- Police reports: www.police.govt.nz/use-105

09 3737599
ext. 85000

University Security



The crime rate in NZ is lower than in many other countries, and we're known for being a peaceful country where you can be out freely without being scared.

- It's still important to be careful, use common sense and make sensible decisions about what you're doing and who you're socialising with
- If you're feeling unsafe or scared you can call the police for free.
- It will work for free from any phone (even if you are out of credit)
- Police officer are friendly and approachable, reach out if you need them
- [More information: Staying safe in New Zealand](#)

Additional resources

International Student Support

- All UoA support services are available to our international students - please reach out to them
- Dedicated Student Support Advisers for international students within Te Papa Manaaki | Campus Care
- Visa and insurance compliance team



int-questions@auckland.ac.nz



NAUMAI NZ

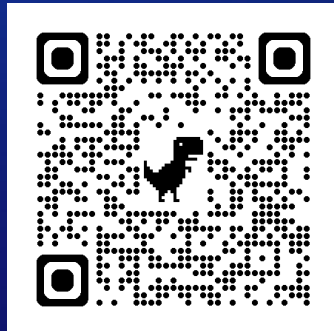
'Nau mai' is a Māori phrase of invitation and welcome.

As an international student this is your place to learn about Aotearoa New Zealand, find the information and advice you need, and connect with and explore your new home away from home.

[Join the community](#)



Scan the QR code and find even more information about living in Auckland and New Zealand



Exploring Auckland and New Zealand

[Visit Auckland](#)

[Heart of the City](#)

[Our Auckland](#)

[Auckland Regional Parks](#)

[Auckland Transport \(AT\)](#)

[NauMaiNZ](#)

[Tourism New Zealand](#)

[Visitor Information Centres \(i-Site\)](#)

[Department of Conservation](#)



Staying safe in Aotearoa

[New Zealand Police](#)

[Fire and Emergency NZ](#)

[Health New Zealand](#)

[Scamwatch](#)

[Department of Conservation](#)

[DriveSafe](#)

[New Zealand Transport Agency](#)

[Drowning Prevention Auckland/NZ](#)

[Surf Life Saving NZ](#)

[Safety in the outdoors](#)

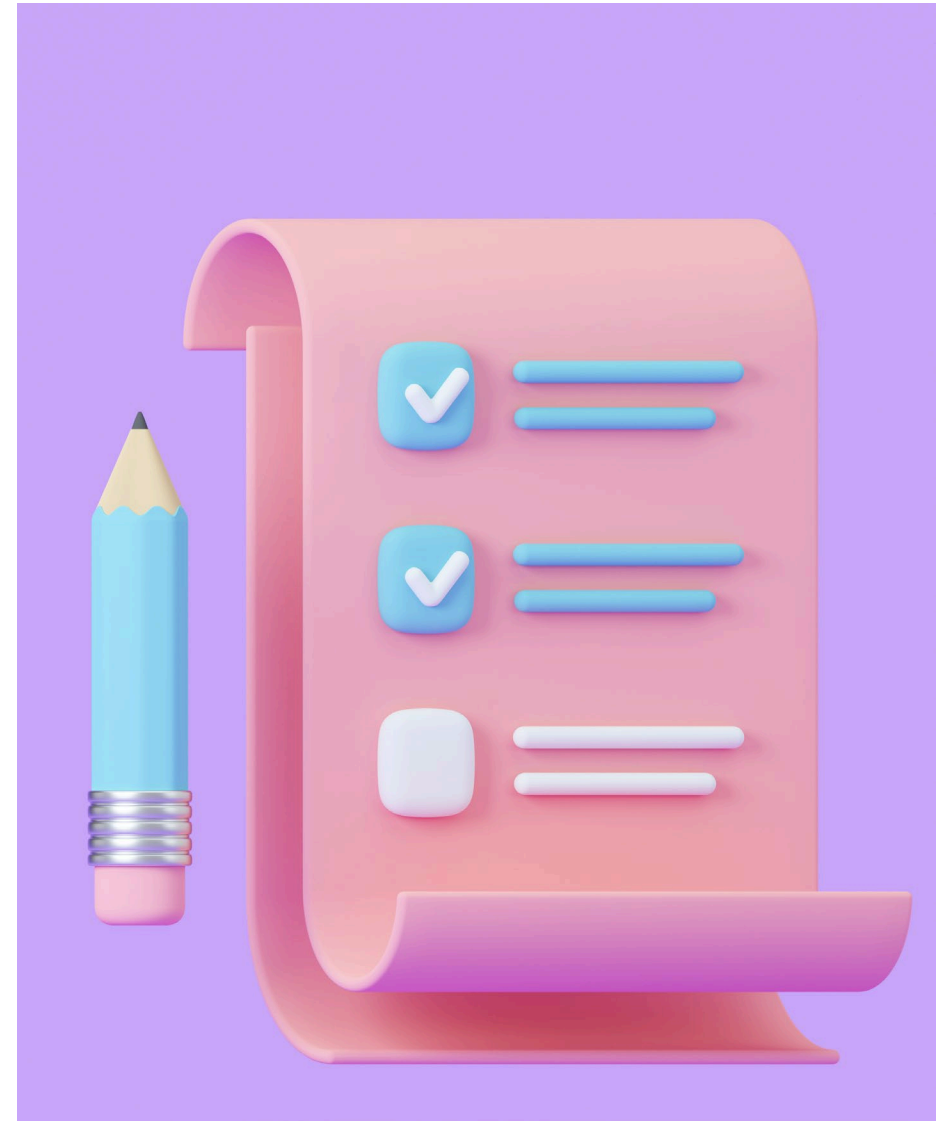


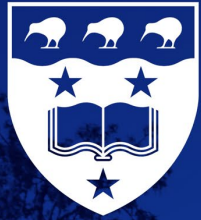
What's next



Next steps

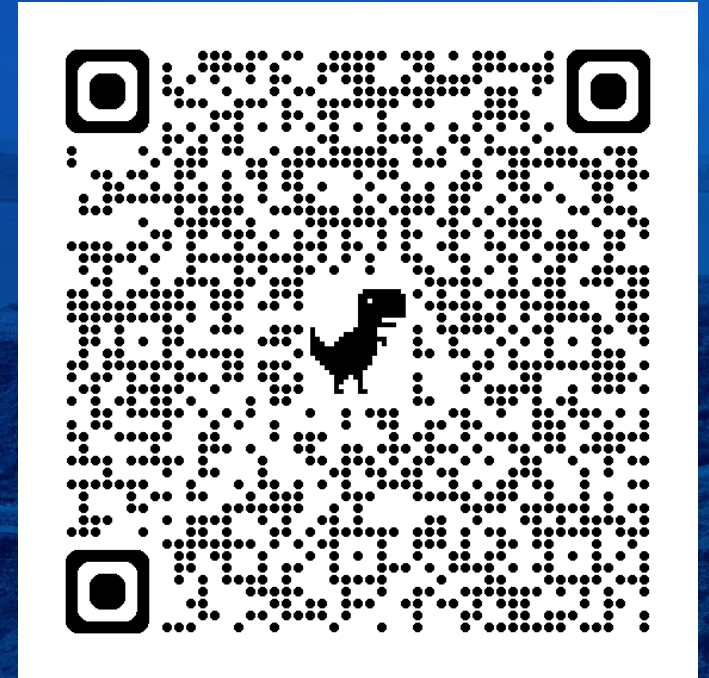
- ✓ **Accept your offer** by the deadline
- ✓ **Prepare your visa application** as soon as possible – this should be submitted by now
- ✓ **New student emails** – will be send to you with valuable information to give your studies the best start
- ✓ **Enrol** in your courses
- ✓ Arrive in Auckland in time for **Orientation:**
 - ✓ Week prior to term start

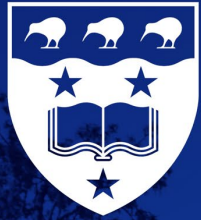




Waipapa
Taumata Rau
**University
of Auckland**

**The slides and recording of
this webinar will be uploaded
here in a few days:**





Waipapa
Taumata Rau
**University
of Auckland**

Ngā mihi mō ngā tau kei mua i te aroaro
Good luck for the future

See you soon in Auckland!