

Applying for your University of Auckland student visa as a returning student



A person with a suitcase is standing in an airport, looking at a flight departure board. The board displays the following information:

Gate	Departures	Time	Flight no.
A2	AUCKLAND	09:45	ANZ230
B2	DUBAI	10:15	UAE335
B1	GENEVA	10:50	DLH405
C2	NEW YORK	11:00	ATA780
A2	HONG KONG	11:20	AMK025
B2	SEOUL	11:45	KAL126
A1	KUALA LUMPUR	12:00	MAS447
B3	AUCKLAND	12:25	ANZ250

Te Tari ki te Ao | International Office
Waipapa Taumata Rau | University of Auckland

Housekeeping

- You can ask questions using the Q&A feature. We answer the question in the Q&A or live during the webinar.
- This webinar is being recorded, and you will be able to watch it again in a few days on our website.
- A downloadable version of this presentation will also be made available in the next few days.
- We will email both links to you.



Types of NZ student visas

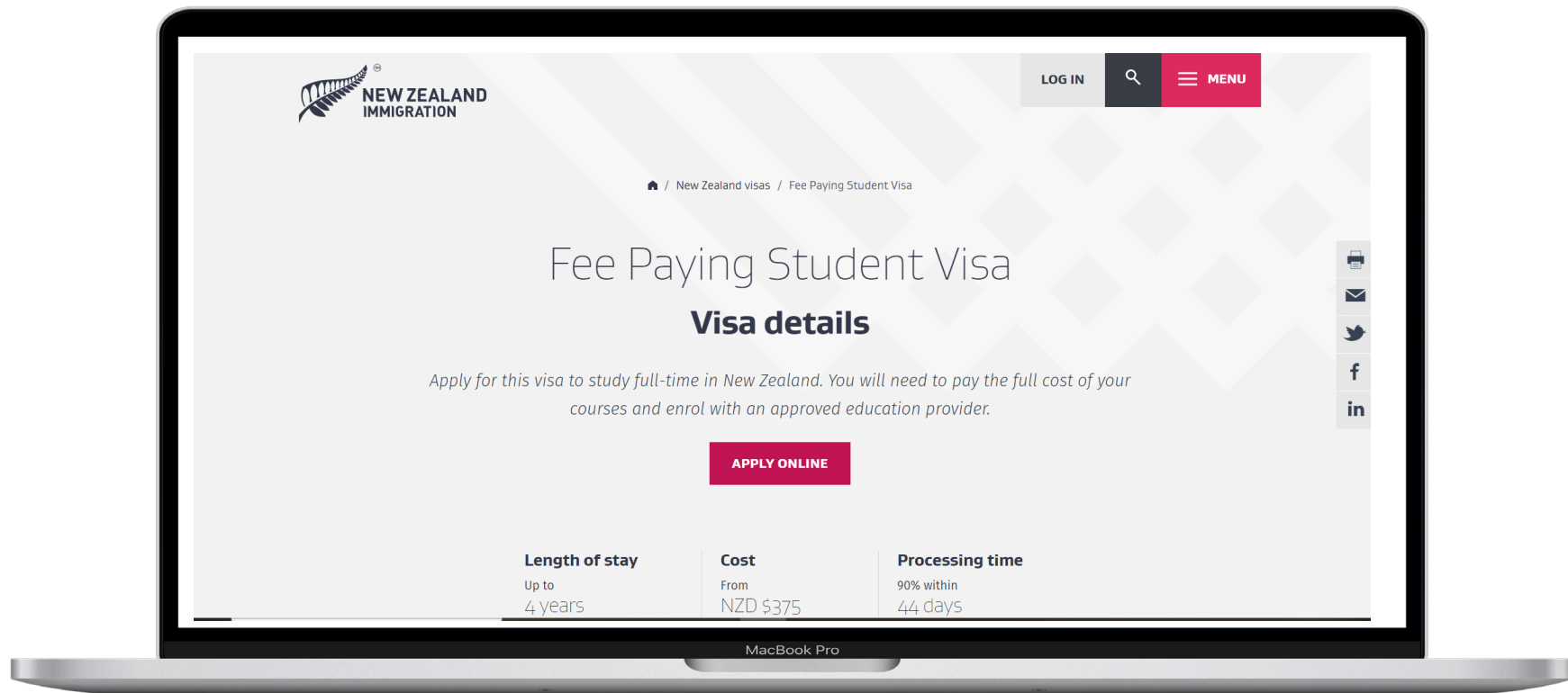
Required documents

Financial evidence requirements

Bona fide applicant

Benefits for student visa holders

Resources and contact details



New Zealand student visa application process



Preparing documents



A

Applicants must provide the following information with the application

- A copy of the passport
- Confirmation of current enrolment letter
- Evidence you have paid your fees (SSO)
- Proof of sufficient funds
- Unofficial transcript for previous semesters (SSO)
- Evidence of health and character if applicable

B

Supporting information - A cover letter

- If you change your programme, you should outline the reasons why your study plan has changed, or
- If you have not progressed in your previous studies as expected, you should explain

C

Student Visa Checklists

- Student Visa Application Checklist – continuing international students

Processing time

INZ aims to process straightforward applications for student visas in **30** weekdays, excluding public holidays.

On average, INZ process student visa applications in **21** weekdays. 90% of applications are processed within **44** weekdays.

When to apply

Apply for a student visa **at least 1 month** before the course start date

You can apply early, but no more than 3 months before the course start date

Student visa process – Interim visa

Things to Note:

- You can't apply for an interim visa; it will be granted automatically.
- Your interim visa will be granted electronically. There won't be a physical visa label in your passport.
- Your interim visa will start when your current visa expires and will expire
 - If INZ approves your application and grants you a visa, or
 - 21 days after your application is declined, or withdrawn, or
 - after six months, if no decision has been made in six months

Visa information

Find out how to apply for your student visa with step-by-step instructions, facts about Post-study work visa regulations and other useful information relating to your immigration status.



Apply for a student visa outside New Zealand >

Apply for a student visa in New Zealand >

Student visa applications for PhD and Doctoral candidates >

Post-study work visa >

Evidence of your visa >

Frequently Asked Questions >

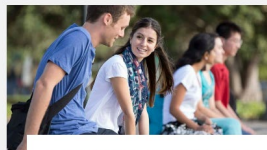
Visa Info sessions >



Student visa applications outside New Zealand

Find out how to submit your student visa application if you are outside New Zealand.

[Discover more >](#)



Student visa applications in New Zealand

Guidelines for international students in New Zealand about submitting your student visa application.

[Get started >](#)



Student visa applications for international PhD students

Step-by-step information for international PhD candidates to submit your student visa application.

[Check it out >](#)



Work after study

If you want to stay in New Zealand to work after your studies, you need to fulfill all the requirements.

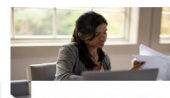
[Discover more >](#)



Visa evidence

You have to supply evidence of your visa to the University so we know you are eligible to study.

[Submit your visa >](#)

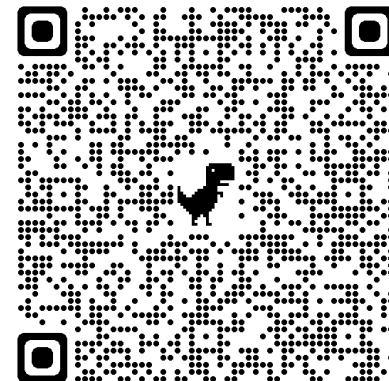


FAQ about visas

We collated a series of questions and answers to help you understand the visa process.

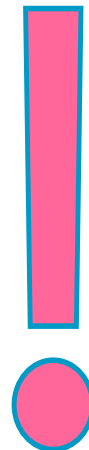
[Get the answers >](#)

www.auckland.ac.nz/visa-information



Evidence of your visa

- You must provide the University with a copy of your passport and visa when you first enrol and whenever you renew your passport or obtain a new visa.
- This is a requirement of Immigration New Zealand and the Education (Pastoral Care of Tertiary and International Learners) Code of Practice 2021.
- All international students must have **a valid visa to study** at the University of Auckland
- It's important that your student visa accurately reflects the program in which you are currently enrolled, specifying the University of Auckland as the education provider. **Please be aware that if you decide to change your program, it is necessary to apply for a new student visa, even if your existing visa might cover your future enrolments.**
- If you study a programme that is longer than three or six months in total (this applies to most University programmes), you will not be able to start your studies on a Visitor or Working Holiday Visa until you have a visa with the appropriate study conditions.
- If you fail to provide your correct visa to the University, your enrolment may be withdrawn, and you lose access to all University services and portals, including CANVAS and Student Services Online.
- When you get your visa, you can upload a copy through our website → [Evidence of your visa](#)



Important notes

The slides provided are for informational and educational purposes only. The information included in these slides is current as of **10 November 2023**, and are subject to change. Please be aware that the instructions that apply will be determined by the date on which you apply for your visa.

For the most up-to-date and accurate information, please refer to the Immigration New Zealand website at www.immigration.govt.nz. This website should always be your primary source for correct and current information.

Feel free to reach out to Immigration New Zealand for any visa enquiries.

If you find yourself uncertain about your immigration situation, seeking advice from a Licensed Immigration Adviser or lawyer is also an option. Community Law Centres may be able to assist you, depending on your circumstances.



In need of assistance



email: karen.dai@auckland.ac.nz



website: www.immigration.govt.nz



You can reach out to INZ contact centre for general information from 6:00 am to 10:00 pm NZT, Monday to Friday, excluding New Zealand public holidays

- Toll-free from NZ landline only: 0508 558 855
- Auckland: +64 9 914 4100
- Rest of the world: +64 9 914 4100

If you are not sure about your situation and need specific advice, you may wish to consider talking to a licensed immigration advisor or lawyer

Online resources

- www.auckland.ac.nz/international-student-support
- www.auckland.ac.nz/visa-information
- www.immigration.govt.nz
- [Student visa application checklist - continuing international students](#)
- [Student visa guide](#)
- [Students who are under 18 years of age at start of term](#)

Contact us:

- int-questions@auckland.ac.nz
- Include your **Student ID** when you email us

Ngā mihi thank you

Time for questions and answers...

Te Tari ki te Ao | International Office
Waipapa Taumata Rau | University of Auckland



A person with a suitcase is standing in an airport terminal, looking at a large flight departure board. The board displays the following information:

Gate	Departures	Time	Flight no.
A2	AUCKLAND	09:45	ANZ230
B2	DUBAI	10:15	UAE335
B1	GENEVA	10:50	DLH405
C2	NEW YORK	11:00	ATA780
A2	HONG KONG	11:20	AMK025
B2	SEOUL	11:45	KAL126
A1	KUALA LUMPUR	12:00	MAS447
B3	AUCKLAND	12:25	ANZ250