



UNIVERSITY OF
AUCKLAND
Waipapa Taumata Rau
NEW ZEALAND

International Prospectus 2026

No.1 university in New Zealand

65th worldwide¹



No.1
in New Zealand for
graduate employability²



Top 1%
Globally for
Sustainability³



Top 50
in the world
for 5 subjects⁴

Ko Waipapa Taumata Rau mātou, e mihi
nei, e karanga nei ki te marea e hiahia ana
ki te kai i te mātauranga.
Nau mai, haere mai, herea mai tōu waka
ki te whare whakairo o Tāne-nui-a-rangi.

We are Waipapa Taumata Rau, we greet,
we call to the many who desire the
sustenance of knowledge.
Welcome, come forth and fasten to the
carved meeting house, Tāne-nui-a-rangi.

Cover attributions

1. *QS World University Rankings 2026*
2. *QS Graduate Employability Outcomes 2026*
3. *QS Sustainability Rankings 2025*
4. *QS World University Rankings by Subject 2025*

Nau mai, haere mai

A warm welcome to Waipapa Taumata Rau, the University of Auckland, New Zealand's highest-ranked¹ and largest higher education institution.

We proudly welcome students, academic teachers, and researchers from around the world.

We offer a learning and research environment that supports and celebrates excellence and inspires students to explore beyond their chosen field of study. All students are offered the opportunity for hands-on experiences at the Centre for Innovation and Entrepreneurship. The University is ranked 1st in New Zealand for Graduate Employment.²

The University's multicultural learning environment is built on partnership with Ngāti Whātua Ōrākei, our local Māori tribe, and strong values-based commitments to supporting members of our community.

1. We are ranked 65th in the world by the QS World University Rankings 2026

2. QS Graduate Employability Outcomes 2026

3. QS University Subject Rankings 2025

At one of our dynamic city campuses, you will have the opportunity to study and conduct research in a comprehensive range of disciplines, 27 of which are ranked in the top 100 in the world.³ We promote transdisciplinary study and research. The University is the academic powerhouse behind the country's growing MedTech and Space sectors.

The University of Auckland's long commitment to the environment sees us deploy sustainability principles across all we do – through our curriculum, research, operations and partnerships. We are proud that these achievements have been recognised internationally,⁴ serving as a key decision point for students.

4. We are ranked in the top one percent of universities worldwide for sustainability by QS Sustainability Rankings 2025

Travelling to New Zealand is an exciting opportunity. Auckland is a diverse and welcoming city with easy access to nature.

We look forward to you joining us and encourage you to explore the scholarship and funding options we offer international students to support your journey to Auckland.

Mā te wā – Goodbye for now, see you soon!



DAWN FRESHWATER

Ihorangi | Vice-Chancellor

Waipapa Taumata Rau | University of Auckland

Contents

01

About our University

Start your story in Aotearoa New Zealand	4
Auckland, our cosmopolitan city	5
World-class education	6
Research, Innovation and Sustainability	7
Build your global career	8
Alumni stories	9
Our campuses	10

02

What can you study?

Arts and Education	11
Business	12
Engineering and Design	13
Law	14
Medical and Health Sciences	15
Science	16
PhD study	17
Transnational Education	17
International opportunities	18
Pathways to undergraduate study	19
English Language Academy	19

03

Application and support information

Scholarships	20
Accommodation	21
Sport and Recreation	22
Student services and support	23
Entry requirements	25
Essential information, costs	26
How to apply	27

Start your story in Aotearoa New Zealand

Meaning “Land of the Long White Cloud”, Aotearoa is New Zealand’s name in the Māori language. It embodies the spirit of our resourceful ancestors, who navigated to these shores by the stars and the clouds.

Embracing all peoples A unique education

New Zealanders, or Kiwis, embrace people from diverse backgrounds with warmth and respect. Our friendly culture, rich history, laid-back open-mindedness and diverse traditions respect everyone’s rights, beliefs, and choices.

Post-study work opportunities

Take your next step after graduation with a post-study work visa. Eligible international students may remain in New Zealand for up to three years to gain relevant work experience and transferable skills. Learn more at Immigration New Zealand.

immigration.govt.nz

A high standard of living

New Zealand has a desirable standard of living, with quality of education, healthcare, transport, infrastructure and government services all above international averages.

All undergraduate students must take a Faculty core course, called Waipapa Taumata Rau, in the first year of study. It focuses on essential skills and core knowledge relevant to your programme and highlights the significance of place-based learning. You will also develop foundational, critical and ethical thinking, and the communication and collaborative skills essential for success in your undergraduate study and the workforce.

Our Māori name

Waipapa Taumata Rau is the University’s Māori name, gifted by local iwi (tribe), Ngāti Whātua Ōrakei. It reflects our ongoing partnership and respect for the indigenous people of New Zealand. The name carries many meanings, Waipapa (a landing place for canoes) symbolises beginnings and connections between people; Taumata (peaks) – excellence and achievement; and Rau (many) – community and journey.

Tāmaki Makaurau Auckland



To Grafton Campus
Medical and Health Sciences

Student
accommodation

Elam School
of Fine Arts

Science

Engineering
and Design

Hiwa
Recreation
Centre

Information
Commons

Tāmaki Makaurau

Auckland, a great place to study, live and work

Located in the heart of Auckland, our City Campus offers the best of a vibrant, energetic urban lifestyle, and yet you can find nature just down road.

Excitingly multicultural

Auckland is typically Kiwi, yet with our exciting blend of cultures, we have a global atmosphere and outlook. Our rich cultural mix is reflected in our spaces, restaurants and events. You'll find expat communities providing opportunities to meet, socialise and worship with others from your home.



Auckland
is home to
180 cultures¹

Explore Māori and Pacific cultures

From learning basic Māori to attending festivals, you can engage with Māori and Pacific culture in daily life. These are unique opportunities that can broaden your perspective beyond the classroom.



42% of
Aucklanders
were born overseas²

Surrounded by nature

Whether you're looking for an adventure or a relaxed weekend, you're never far from a beach or a glimpse of the Hauraki Gulf with its many islands to explore. Around the inner-city campuses are urban green spaces for a quick break from study, while forests and waterfalls await just at the city's edges.



7th most
Liveable City
in the World³



Home to
28 public
regional parks



1. Statistics New Zealand, 2018 Census
2. Statistics New Zealand, 2023 Census
3. Economist Intelligence Unit (EIU) Global Liveability Index 2025

World-class education

The University of Auckland is New Zealand's pre-eminent research-led institution. We have been recognised by international organisations for excellence in our teaching, research and sustainability work.



**No.1
university**
*in New Zealand
and 65th
worldwide¹*



Top 1% globally
for Sustainability⁴



**33% of the
top researchers
in New Zealand⁶**
*New Zealand's largest
research organisation*



No.1
In New Zealand and
Top 100
worldwide for
**graduate
employability²**

**Top 50
in the world**
for 5 subjects⁵

Sports-related subjects	24
Archaeology	27
Education	=34
Marketing	46
Civil and Structural Engineering	=48

**Top 100
in the world**
for 27 subjects⁵



**No.1
in Australasia**
*for start-up and
spin-out companies³*

**120+
undergraduate
subjects**

*New Zealand's most
comprehensive university*



**8,000+
international students**
**from 100+
countries**

1. QS World University Rankings 2026

2. QS Graduate Employability Outcomes 2026

3. Survey of Commercialisation Outcomes from Public Research 2023

4. QS Sustainability Rankings 2025

5. QS World University Rankings by Subject 2025

6. 2024 Stanford Elsevier Top Two Percent of Researchers in the World

Research, innovation and sustainability



Global, impactful, future-focused research

Our transdisciplinary research significantly impacts the world. We consistently rank in the top 1% of universities globally for sustainability, with six consecutive top-13 UNSDG impact rankings.

Our 60-plus research centres and institutes include two renowned Large Scale Research Institutes – the Liggins Institute and the Auckland Bioengineering Institute. Additionally, our seven University-led Centres pioneer research in brain disorders, climate, biodiversity, ageing, global health, wellbeing and housing. We also host four of New Zealand's ten Centres of Research Excellence (CoREs).

auckland.ac.nz/research



Centre for Innovation and Entrepreneurship

The Centre for Innovation and Entrepreneurship (CIE) empowers students with co-curricular programmes to develop innovation and entrepreneurship skills. Open to all University of Auckland students, CIE offers free access to innovation hubs, makerspaces, expert guidance, and networking opportunities. With over 250 programmes, events, and workshops each year, there's something for everyone – whether you're exploring ideas or launching a start-up. CIE provides a supportive space in which to experiment and grow. Recognised globally, CIE has won 12 international awards since 2020.

auckland.ac.nz/cie



Highly ranked in sustainability

The University of Auckland placed top in New Zealand, fourth in Oceania, and in the top one percent worldwide in the most recent QS Sustainability Rankings.¹ This result, along with six consecutive top 13 placings in the University Impact Rankings,² reflects our dedication to social and environmental impact, good governance, and the Sustainable Development Goals. We are committed to further integrating sustainability into education, research, operations and partnerships, and to achieving and sustaining a net zero carbon trajectory for our university.³ As Chair for the United Nations Academic Impact Hub on Sustainable Development Goal 8, the University advances global dialogue and collaboration on inclusive economic growth, fair work and entrepreneurial opportunities.

Multiple-award-winning Building 201, pictured above, symbolises our dedication to creating sustainable campuses through low-carbon design and operations.

auckland.ac.nz/study-sustainability



Entrepreneurship, innovation and start-up opportunities

UniServices is the University's research and knowledge transfer company. We help students and researchers to realise the potential of their ideas, whether as start-ups or licenced technologies. We manage the University of Auckland Inventors' Fund, a contestable evergreen \$40m seed/pre-seed fund, as well as two investment committees, Momentum, a national student-led investment committee programme, and our national research commercialisation programme, Return on Science.

uniservices.co.nz

1. QS Sustainability Rankings 2025

2. Times Higher Impact Rankings results 2019-2024

3. Sustainability Strategy and Net Zero Carbon Strategy

Build your global career

Study at New Zealand's highest-ranked university and obtain the skills and qualifications sought by global employers. Learn new ways of thinking and enhance your future career while gaining a world-class education.

Career support for every student at every step

Our award-winning Career Development and Employability Services team (CDES) provides dedicated wrap-around support programmes and practical resources. These are free for every student. They also have two designated International Career Development Consultants who are responsible for providing specialised services for our international students and graduates.

You can access their free support throughout your studies and for three years after graduation.

auckland.ac.nz/cdes

Highly employable graduates, generous work rights

As a graduate, you may be eligible for a post-study work visa, allowing you to apply your skills and knowledge with a New Zealand company. If you have a partner, they may be able to apply for a work visa, and your children may be able to study as domestic students in New Zealand primary and secondary schools. This visa may also be a step towards staying permanently in New Zealand if you qualify for other work or residency pathways.

Most university students can also work up to 20 hours a week part-time, and full-time during scheduled study breaks.

Please visit New Zealand's immigration website for the most up-to-date information.

immigration.govt.nz



“CDES workshops helped me understand CVs in New Zealand, while networking events and career expos helped me feel empowered.”

Zoea Chen, China
Master of Information Technology



Read more
auckland.ac.nz/meet-zoea

Alumni Stories

Our international alumni share their student experience and the journey to the careers they went on to pursue.



“Developing interpersonal skills and an understanding of human behaviour through my education have been invaluable in my role as a leader in business.”

Chandni Sahrawat, India

Bachelor of Arts in English and Psychology
Director and Operations Manager, Sidart, Cassia and Sid at the French Café



“Living overseas is such an enriching experience, and even if it doesn’t work out the way you thought it would, you will learn a tonne along the way.”

Kate Riegle van West, USA

PhD in Poi and Health under the Centre for Brain Research and Dance Studies
Founder and CEO, SpinPoi



“The technology and study resources were amazing. We had access to quality labs, literature databases, and relevant software.”

Aditya Rudrakar, India

Master of Engineering Studies in Mechanical Engineering
Technical Lead in Mechanical Engineering, NILO



“The University supported us in preparing for life beyond campus, offering networking events, career talks, volunteering opportunities, and assistance with CV writing.”

Trixia Felix, the Philippines

Master of International Business
Project Manager, CyberCX



“My work is to help the business analyse data to inform strategic decisions. I enjoy this process very much as its very fulfilling to see how it helps the company make decisions.”

Poppy Cao, China

Master of Business Analytics
Commercial Analyst, Mercury



**Read our
alumni stories**

auckland.ac.nz/int-alumni



Tai Tokerau Campus, Whangārei



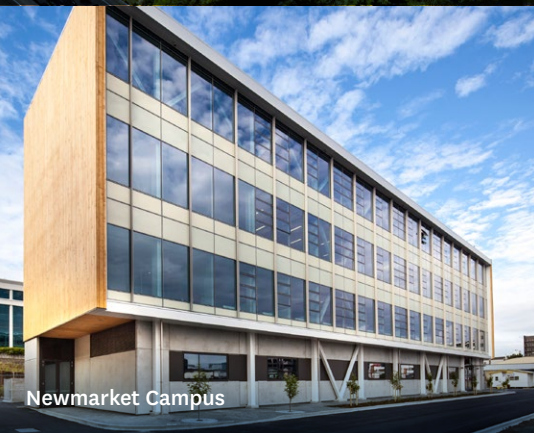
Leigh Marine Laboratory



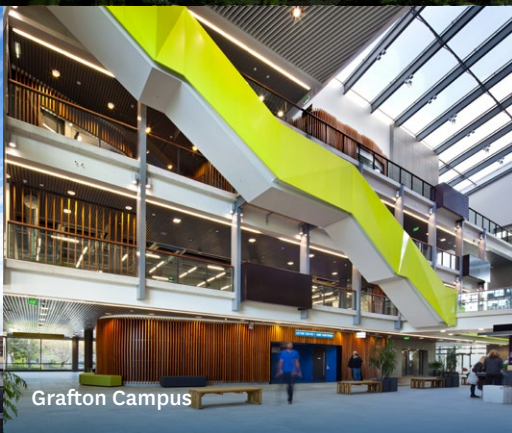
Goldie Estate Wine Science Centre, Waiheke



City Campus



Newmarket Campus



Grafton Campus



South Auckland Campus

1 University, 7 unique campuses

The heart of the University is the City Campus, located in Central Auckland, the main hub for most of our faculties and students. The campus has a full range of amenities, including health and support services, retail outlets, libraries, an information commons and the Hiwa recreation centre.

Home to the Faculty of Medical and Health Sciences, Grafton Campus is a 20-minute walk from the City Campus. It is right across the road from the country's largest hospital and has purpose-built training facilities and clinics, along with a dedicated library.

Newmarket Campus, just five minutes from Grafton, houses the large scale research facilities of the faculties of Engineering and Science. This is a zone of innovation and growth in engineering, science and health technologies.

The City, Grafton and Newmarket Campuses are well-connected by the public bus network.

Outside of the city, the Science faculty also has specialist facilities at the Leigh Marine Laboratory and the Goldie Estate Wine Science Centre on Waiheke Island.

Our South Auckland Campus is a 30-minute drive south of the City Campus, while the Tai Tokerau Campus is in Whangārei, a city two hours by car north of Auckland.

auckland.ac.nz/campuses



Arts and Education

The innovative Te Pūtahi Mātauranga, Faculty of Arts and Education combines the strengths of Arts, Education, Social Work, and Creative Arts, offering you a unique opportunity to explore, create, and shape the future.

More than ever, in our rapidly changing world, we need creative, critical and compassionate thinkers. Our programmes prepare you to become tomorrow's influencers, communicators, educators, artists and leaders. Our commitment to excellence ensures you'll receive a world-class education. You'll graduate with the confidence, skills and vision to make a positive impact on the world.



Explore our programmes
auckland.ac.nz/arts/subjects-courses



“My degrees give me a strong foundation in both politics and economics, which I believe are essential for solving global challenges.”

Hoang Ha Chi Nguyen from Vietnam

Bachelor of Global Studies and Bachelor of Commerce conjoint



Read more
auckland.ac.nz/meet-tracy

Business

Transform your career and make your mark on the business world with a degree from New Zealand's leading Business School.

We are known for research and teaching excellence and for our strong industry partnerships. With our highly experienced academic experts, up-to-date technology and emphasis on student development, you'll gain a top-notch business degree that's valued by employers globally.

We hold leading international accreditations, including the triple crown: AACSB International, EQUIS and AMBA. These are your assurance of the highest academic standards, offering global credibility and recognition. University of Auckland Business School graduates hold top positions in organisations within New Zealand and around the world.



Innovative learning spaces

Develop in-demand professional skills in our specialist learning spaces, including the BNZ Financial Trading Room, Te Ahi Hangarau Technology Hub and Kura Matahuna – Unleash Space.

As an undergraduate student, you'll use these facilities in your first-year core courses and in the award-winning Business Consulting course in your second year. You'll enjoy innovative learning throughout your degree, with interactive workshops, a mix of individual and team-based learning and flipped classrooms – where students prepare before they come to class.

For postgraduate students and researchers, these spaces offer you unique opportunities for collaboration, research, ideation, testing and prototyping.

auckland.ac.nz/business-facilities

Majors and conjoints

With a wide range of majors available, the Bachelor of Commerce (BCom) offers you the chance to follow your passion wherever it may take you. You can increase your knowledge and expand your career options with a double major, or explore a variety of conjoint options to complement your Bachelor of Commerce or Bachelor of Property degree.

auckland.ac.nz/conjoints-by-faculty



Find out more
auckland.ac.nz/business



The home of the Business School is the Sir Owen G Glenn Building, home to our state-of-the-art teaching, learning and social facilities.



“By combining my finance background with a passion for sustainability, I aim to play a pivotal role in shaping a sustainable future within the finance industry.”

Avanthi Dissanayake, Sri Lanka
Graduate in Master of Applied Finance



Read more
auckland.ac.nz/meet-avanthi

Engineering and Design

Te Herenga Auaha, The Faculty of Engineering and Design provides internationally recognised qualifications to the innovators of our next generation.

As New Zealand's leading faculty for Engineering, we offer a wide selection of specialisations in our Washington Accord-accredited undergraduate programme,¹ as well as in our postgraduate programmes. The University of Auckland has also been awarded a five-star plus QS Stars University Rating² for excelling in research, employability, teaching, facilities, internationalisation, innovation, and inclusiveness.

Our programmes include taught and research options that are tailored to a variety of backgrounds and skill levels. They aim to enrich your knowledge and first-hand experience, as well as enhancing your employability.

We provide work experience for all students and foster relationships with industry partners to prepare you for your career. These relationships create worldwide networking opportunities. Our postgraduate students can work on globally significant projects alongside internationally respected researchers.

Our research centres

Research is a prominent feature at the Faculty of Engineering and Design. We are proud to be recognised as a pioneering force in a broad range of interdisciplinary work, with 17 state-of-the-art research facilities. These enable the best Engineering and cross-disciplinary research in New Zealand. Our diverse expertise allows us to address global challenges, including the health of our nation, the growth of our economy, and the future of our cities. Discover why the Faculty of Engineering and Design is the best place to develop, hone and advance your research.



Read more
auckland.ac.nz/engineering



1. Washington Accord accredited programme applies to our Undergraduate BE(Hons) degree
2. QS World University Rankings 2024



“The University has established connections with industry partners, offering prospects for internships and career advancement.”

Riya Narode from India
Bachelor of Design



Read more
auckland.ac.nz/meet-riya

Law

The Auckland Law School is ranked 59th in the 2025 QS World University Rankings by Subject, and number 1 in New Zealand. This testifies to our high quality of teaching, learning and research. We rank alongside the best in the world.

Gain skills and knowledge from New Zealand’s leading school that will prepare you for diverse careers within the legal profession and beyond. We are the largest Law school in New Zealand and have an international reputation for academic excellence. With our highly recognised academic staff, excellent career development team, and access to New Zealand’s largest Law library, you will gain a degree that will be recognised globally. We offer a wider variety of both undergraduate and postgraduate courses than any other university in New Zealand. We also offer a variety of postgraduate programmes to non-Law graduates, with no legal background required.

Those wishing to pursue a PhD or Master of Research, will find an exciting opportunity to conduct independent and cutting-edge research. We are home to several distinguished research centres, guided by accomplished leaders in their fields.

The core research areas that you may pursue include:

- Constitutional, Administrative and Public Law
- Contract, Torts, Equity and Private Law
- Corporate and Commercial Law
- Criminal Law and Justice
- Human Rights Law
- Indigenous Peoples and the Law
- International and Comparative Law
- Land and Environmental Law
- Legal History and Theory
- Litigation, Dispute Resolution, Family and Relationships Law



Find out more
auckland.ac.nz/law



“Events held by our faculty enable me to connect with people working in the industry”.

Evelyn Guo from China
Master of Laws



Read more
auckland.ac.nz/meet-evelyn

We are thrilled to announce the launch of our cutting-edge Juris Doctor (JD) programme, designed for aspiring legal professionals who aim to excel in today’s dynamic legal environment. The JD combines rigorous academic training with practical legal skills, preparing non-Law graduates to navigate complex legal systems, address contemporary challenges, and lead with confidence in a globalised world. Whether you’re embarking on a new journey or transitioning careers, this programme offers a transformative path to achieving your legal goals. The programme commences in 2027, with enrolments expected to open in 2026. Stay tuned for additional details online.

Medical and Health Sciences

At Mātauranga Hauora, Faculty of Medical and Health Sciences, we are dedicated to helping you reach your potential and build the foundations for a successful career.

As an international student, you can choose from a broad range of undergraduate and postgraduate programmes in Medicine, Nursing, Medical Imaging, Medical Sciences, Pharmacy, Optometry, Population Health and a variety of Science disciplines. You'll be taught by expert lecturers and renowned researchers in world-class facilities. You'll also make life-long connections with fellow students.

Our Grafton Campus is situated opposite Auckland's largest hospital, on the doorstep of the beautiful Auckland Domain. Since our beginnings in 1968, we have gained an international reputation as a world-leading health and medical sciences faculty. University of Auckland's global ranking amongst the top 100 universities¹ is evidence of our commitment to academic excellence.

We are considered the largest biomedical research faculty in New Zealand. As a student, you'll have the opportunity to learn in a research-rich environment. We host four transdisciplinary University Research Centres, a Centre for Research Excellence and numerous Faculty Research Centres. Our research teams in these areas provide nurturing and highly supportive postgraduate training in an innovative learning environment.

1. 65th worldwide: QS World University Rankings 2026



Find out more
auckland.ac.nz/fmhs



"I chose the University of Auckland because of the peaceful and inspiring environment. Also safety is crucial for me as an international student, and Auckland feels very safe."

Shreya Agrawal, India
Master of Biomedical Science



Read more
auckland.ac.nz/meet-shreya

Science

The Faculty of Science is internationally recognised for its outstanding teaching and diverse research opportunities. We are the largest group of internationally renowned academic scientists in New Zealand.

We are the largest Science faculty in New Zealand, with more than 8,500 students (20% international). Additionally, 15 of the University of Auckland's science subjects are ranked 1st in New Zealand.¹ Our state-of-the-art facilities include our award-winning multi-disciplinary laboratories, the renowned Leigh Marine Reserve and our Goldie Estate vineyards on Waiheke Island.

We offer a diverse range of subject areas. Our flexible Bachelor of Science, with its wide variety of majors and specialisations, offers exciting postgraduate pathways.

Within our programmes, subjects are grouped into five areas:

- Biological, Human and Life Sciences
- Chemical and Physical Sciences
- Geography, Earth and Environmental Sciences
- Human, Social and Behavioural Sciences
- Mathematical and Computational Sciences

1. QS World University Rankings by Subject 2024



Explore our undergraduate subjects
auckland.ac.nz/science/ug-subject-guides



Explore our postgraduate subjects
auckland.ac.nz/science/pg-subject-guides



“My programme is designed to be fun and lively to stimulate our learning potential.”

Zhen Zhang from China
 Master of Science in Chemistry



Read more
auckland.ac.nz/meet-zhen

PhD Study

Pursue your PhD at the University of Auckland and pay the same tuition fees as New Zealand doctoral candidates – just NZ\$8,347.20¹ or around US\$5,000.²

Join a research-led university with a reputation for academic excellence and ambitious research. Collaborate with world-class researchers, publish in leading academic journals, and build the skills you need for a successful future in academia, industry, entrepreneurial ventures and beyond.

Why choose us for your PhD?

World-class researchers

We are an institution of global standing, ranked first in New Zealand and among the top 65 in the world.³ We have the highest number of top-ranked researchers and annual graduate student completions of any university in the country. As the largest research organisation in New Zealand, we offer PhDs in more than 100 subjects.

Dynamic international community

Our doctoral candidates and supervisors represent the best and brightest from all over the world, representing around 90 nations. We come together to find solutions to humanity's greatest challenges.

Comprehensive support

We support your PhD journey with our outstanding financial, academic, research, career, and wellness services. These include comprehensive training and development opportunities, and the unique Postgraduate Research Student Support (PReSS) account – individual funding granted to every doctoral candidate for research expenses.

auckland.ac.nz/doctoral-candidates

Employment opportunities

When you study in New Zealand as a full-time international PhD candidate, your visa will allow you to undertake paid work. On completing your PhD, you may apply for a three-year post-study work visa through Immigration New Zealand.

immigration.govt.nz

Family benefits

As a PhD candidate based in New Zealand, you pay the same tuition fees as a domestic student and can bring your family when you study. Additionally, your spouse or partner may apply for an open work visa valid for the same duration as your student visa.

immigration.govt.nz

Find a research supervisor

Discover the wide variety of research throughout our faculties and find a supervisor to match your research focus. Find information about our research experts and explore supervision opportunities on our online database, Discovery Profiles. auckland.ac.nz/profiles. You can also find information on supervisors at: auckland.ac.nz/findasupervisor

How to apply

Visit our website for a step-by-step application guide and other helpful information about our PhD programme.

auckland.ac.nz/applying-for-a-doctorate

1. The 2026 tuition fee had not been set at the time of publication. To be eligible for the domestic fee, you must reside in New Zealand for the duration of your PhD programme. However, you may undertake research activities and conferences overseas during your doctoral programme (for a cumulative total of no more than 12 months).
2. May 2025
3. QS World University Rankings 2026



“Through TNE, I can do my bachelors and masters degrees simultaneously, which is challenging but fulfilling.”

Dean Lin, China
Master of Data Science



Read more
auckland.ac.nz/meet-dean

Transnational Education (TNE)

The University of Auckland partners with leading global institutions to offer TNE programmes. Through various academic collaboration models, students can earn dual degrees in a shorter timeframe – one from their home institution and one from the University of Auckland.

You will begin your studies at your home institution and, upon meeting academic and language requirements, you can transfer here to continue your studies.

Our main TNE programme models include:

- **Dual Bachelors** – earn two bachelors degrees, one from your home institution, one from the University of Auckland
- **Dual Masters** – earn two masters degrees, one from your home institution, one from the University of Auckland

- **Postgraduate Articulation** – earn a bachelors degree from your home institution and a masters degree from the University of Auckland
- **Dual PhDs** – earn two PhD degrees, one from your home institution and one from the University of Auckland

Find out more about our TNE programmes and partners online.

auckland.ac.nz/TNE

International opportunities

Take yourself global

Enhance your skills and employability through a semester or year-long exchange, language study abroad, or a virtual international experience.

Be a global learner. 360 International provides University of Auckland students access to a wide range of international learning experiences, both online and overseas. We have active partnerships with more than 120 universities and international organisations around the world. Come to the University of Auckland and study in a third country to expand your impact and further your education.

No.1
Learning
abroad
programme
in New Zealand

We offer:

- Semester exchange programmes
- Virtual international internships
- Short-term opportunities
- Faculty-led programmes
- Student network programmes
- Language study abroad

Find out more:

auckland.ac.nz/360



“My experience in Chile has opened so many doors for me and has given me new avenues. It reignited my passion for public health, especially in older adults and showed me how indigenous models of health and worldviews can help to provide more holistic and equitable health care for everyone.”

Sonja Neef, spent four weeks in Chile as part of Pontificia Universidad Católica de Chile’s short course on Intercultural Approaches to Public Health.



Johnny Stavropoulos is a Study Abroad student from the University of Cambridge, UK.

“The best part about living in Auckland for me has been the people – so many people I’ve met have been incredibly kind and laid-back, and it’s made the city feel so welcoming. My favourite thing about the University of Auckland community is how enthusiastic and welcoming it is; it’s been a wonderful experience to join such a variety of clubs.”

Study Abroad at the University of Auckland

Spend a summer, a semester or a year at the University of Auckland and earn credits toward your home university qualification.

With 5 of our subjects ranked in the world’s Top 50,¹ the University of Auckland offers exceptional learning opportunities – and the unique experience of living in the urban heart of New Zealand. Take courses that complement your degree or that immerse you in New Zealand cultural and environmental heritage. You can enrol in up to four courses per semester and choose from over 100 subjects. Popular courses include Māori Studies, Pacific Studies and Environmental/Marine Science.

2026 fee of NZ\$13,728 (approx. US\$8,200²) per semester

We offer experiential learning, including student-athlete and research experiences, internships, service learning and community engagement. Extracurricular opportunities are available through our Generation Changemaker Programme, Waipapa Noho Marae and Centre for Innovation and Entrepreneurship. Find out more online.

auckland.ac.nz/studyabroad

Follow our Study Abroad ambassadors on Instagram to find out what it is like to live and study in Auckland.

[instagram.com/studyabroad_auckland](https://www.instagram.com/studyabroad_auckland)

1. QS World University Rankings by Subject 2025

2. May 2025



Pathways to undergraduate study

New Zealand secondary school

International students can study towards New Zealand secondary school qualifications and qualify for entry to university. New Zealand schools have an excellent reputation for their teaching quality and academic facilities. Pastoral care for international students often includes home-stay accommodation with a family.

Most schools offer the National Certificate of Educational Achievement (NCEA), and some offer the internationally recognised University of Cambridge International Examinations (Cambridge International) or International Baccalaureate (IB). The University of Auckland recognises all of these qualifications. Our entry requirements are the same for both New Zealand domestic students and international students.

auckland.ac.nz/is-entry

University of Auckland International College

As a foundation programme student, you will officially be enrolled at the University of Auckland and have access to the same services as an undergraduate student.

Certificate in Foundation Studies taught by University of Auckland International College

University of Auckland International College

345 Queen Street, Auckland City

Email: admissions@up.education

Phone: +64 9 558 3536



Find out more
internationalcollege.ac.nz

Foundation programmes

A foundation programme is a great alternative pathway to a bachelors degree – for students who don't meet direct entry requirements, want to start university early, or prefer a smoother transition from high school.

It supports both native and non-native English speakers, building academic and language skills for university success. Students who meet the required standards are guaranteed entry into University of Auckland bachelors degrees.

International Study Centres

International students outside of New Zealand can study a pathway programme at an International Study Centre, managed by our partner NCUK.

ncuk.ac.uk

English Language Academy

If you have not yet met the English language requirements for the University of Auckland, the English Language Academy (ELA) offers programmes that can help you achieve your language goals. We are also an accredited IELTS and PTE Academic testing centre.

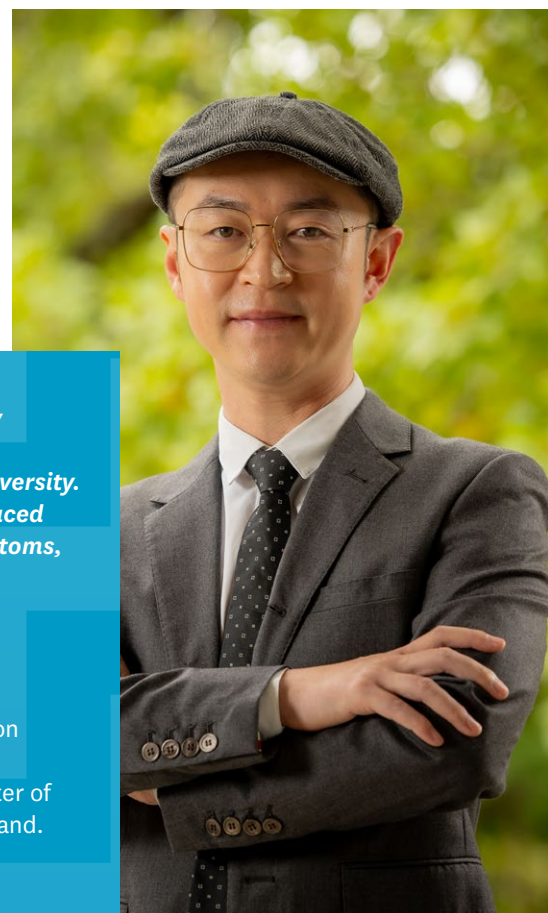
Academic pathway programmes

ELA pathway programmes are for conditional offer holders and are designed to help you prepare for university studies. If you achieve the required grade, you will meet the University's English language requirements and will not be required to take IELTS or any similar test. Our courses range from 10 to 30 weeks, depending on your current level of English.

ela.auckland.ac.nz

“The ELA pathway programme’s fully immersive English environment was instrumental in preparing me for university. The extracurricular activities introduced me to New Zealand’s culture and customs, helping me integrate smoothly into society.”

Zhiwen Tan from China now works as a marketing manager in Auckland. After successful completion of the Foundation Certificate in English for Academic Purposes (FCertEAP), he earned a Master of Management at the University of Auckland.



Scholarships and funding

Our University is proud to offer a range of scholarships and financial aid options to help make tertiary education more accessible and affordable for all students, regardless of their economic background. This year, we have more than NZ\$15 million in scholarships for international students.

Exclusive scholarships for new international students

We offer generous scholarships to high-achieving international students who are enrolling for the first time in a full-time undergraduate or postgraduate programme.

- **University of Auckland International School Leaver Scholarship**
Up to \$10,000 towards tuition fees for new international undergraduate and postgraduate students
- **University of Auckland India High Achievers Scholarship**
Up to \$20,000 towards tuition fees for new international students from India
- **University of Auckland ASEAN High Achievers Scholarship**
Up to \$10,000 towards tuition fees for new international students from ASEAN countries

• University of Auckland International School Leaver Scholarship

Up to \$20,000 towards tuition fees for new international undergraduate students who attended secondary school in New Zealand

Doctoral scholarships

The University of Auckland Doctoral Scholarships are awarded to high-achieving doctoral candidates applying for admission to an approved doctoral programme each year (totalling \$34,569 per annum stipend + tuition fees + health insurance in 2025).

auckland.ac.nz/phd-scholarships



Country-specific scholarships

We work with generous external scholarship agencies and government bodies to provide opportunities for international students who meet admission entry criteria.

auckland.ac.nz/scholarships-country



Manaaki New Zealand Scholarships

These scholarships are funded and administered by the Ministry of Foreign Affairs and Trade. The purpose is for candidates from selected Pacific and Asian countries to gain knowledge and skills that will assist in the development of their home country.

See how a receiving a scholarship has helped international students in their studies.

auckland.ac.nz/manaaki-stories

**Over
\$15 million**
in scholarships
available in 2025
for sub-doctoral
international
students

**Find a scholarship
for you**



auckland.ac.nz/scholarships-int



Accommodation

Our Accommodation provides a safe, comfortable and supportive environment, with options of self-catered or fully-catered residences. All are within easy walking distance of the City and Grafton Campuses, and many of Auckland’s main attractions.

What’s great about our student accommodation?

- Utilities such as water and electricity are included
- Access to University WiFi
- Membership to our Recreation Centre
- Built-in resident support
- Laundry facilities
- A vibrant social experience
- Study areas for focus
- Communal recreation spaces to unwind

We have single and studio rooms available across our residences.

Couple and family options are available at the University but are limited, especially for those applying outside of the standard academic year.

To learn more about our residences, please visit our website.

auckland.ac.nz/accommodation



University residences

	Fee per week, NZD*	Walking distance to City Campus
Self-catered	\$330-\$500, single room	5-15 mins
Catered	\$490-\$530, single room	5-20mins

**All prices quoted are per week and reflect 2025 prices and contract lengths. They are subject to change for 2026. All self-catered residences are available for 42 or 52-week periods, except for Waikohanga House and two-bedroom family apartments at Carlaw Park which are only available for a 52-week period.*



Application dates

Applications for Semester One 2026 open on 1 August 2025.
Applications for Semester Two 2026 open on 1 April 2026.

To have the best chance of getting a place in a residence, you should apply for accommodation at the same time you apply for your academic programme. Late applications will be considered if rooms are available.

If you’re applying in Semester Two or between February and November, we encourage you to contact our Accommodation team. They will assist you in finding accommodation that best fits your needs.

Contact Accommodation Solutions

accom@auckland.ac.nz



Apply online at
accommodation.auckland.ac.nz



Recreation and sports

Hiwa, our state-of-the-art Recreation Centre, opened right in the heart of City Campus in November 2024.

It's more than just a gym, sports centre, and hang out spot. It's the new go-to place with more opportunities than ever before for students to get active, support their wellbeing, make new friends and gather.

The 21,000 square metre facility includes:

- Aquatics hall with 8-lane swimming pool, dive tank, spa pool and sauna
- Rooftop with panoramic city and harbour views featuring multi-sport turf as well as track, workout and hangout zones
- Gym with large cardio and weights zones
- Two sports halls including one with glass floor and LED markings for easy multi-sport usage
- Boulderling wall
- Squash courts
- Numerous large group exercise studios
- Specialised group exercise studios including spaces for boxing and dance
- Thoughtfully designed "chill" spaces
- Café and retail outlet
- Indoor and outdoor multi-purpose event spaces

Our affordable memberships will give you access to all of the above plus group fitness classes, all the gym facilities and bookable sports courts during drop-in hours. Great news for accommodation residents: your membership is included in your fees.

For those looking to take part in social or competitive sport, there are many programmes available. These include social sports leagues, interfaculty and inter-residential tournaments, sports clubs to join, academic and performance support for eligible performance athletes, and the opportunity to represent the University at the National Tertiary Championships. Sailing, waka ama, and other marine sports are run from the University's Hyundai Marine Sports Centre. Our Esports Arena provides an innovative space for community, competition and educational experiences.

auckland.ac.nz/sportandrec

Cafés, bars and shops

Whether you're lunching with friends or just grabbing a snack, gift or some university merchandise, there's an outlet on campus to suit your needs. Our wide range of retailers and vending machines ensure you don't need to travel far, giving you time to enjoy the vibrant campus culture.

auckland.ac.nz/foodandretail



Student services and support

Academic support

Te Tumu Herenga Libraries and Learning Services

Te Tumu Herenga provides resources, workshops and advice to help you successfully complete your study.

Our Te Herenga Mātauranga Whānui General Library and other specialist libraries cover the variety of subjects taught at the University with physical and digital collections.

We have study spaces and training rooms with easy access to computers, printers, scanners and photocopiers. Helpdesks provide course, study and IT support for all our students.

auckland.ac.nz/library

English language for university study

The University offers free services to help you improve your English language skills while you study.

Diagnostic English Language Needs

Assessment (DELNA) is a free check of your academic English language skills. You will find out more about DELNA during your faculty orientation session.

auckland.ac.nz/delna

English Language Enrichment (ELE) provides on-campus and online opportunities for our students to improve their academic English.

You can get advice about your English skills, join language-learning groups, participate in Writing in English workshops, and find language exchange partners.

ELE Online provides language-learning materials, including vocabulary, grammar and pronunciation tools to help improve your academic English.

auckland.ac.nz/ele

Academic English Studies courses are available in the Faculty of Arts and Education. They aim to develop your academic English skills.

auckland.ac.nz/aes

Te Fale Pouāwhina

Te Fale Pouāwhina provides on-campus and online opportunities for our Māori and Pacific students to advance their scholarship and academic aspirations. We are passionate about delivering an academic learning service that is founded on Māori and Pacific ways of being.

auckland.ac.nz/te-fale-pouawhina



Personal support

Be Well Student Wellbeing

The team offers a range of tools and information to care for your physical, emotional and spiritual wellbeing so you can thrive during your time at university. Events and training sessions focus on proactive and preventative measures that promote health, reduce stress and enhance a sense of community and belonging.

auckland.ac.nz/be-well

Inclusive community support

The University is a community of many cultures, identities, ethnicities and diverse values. We offer a welcoming and safe environment for all students, with a range of inclusive support services to fit your unique identities.

auckland.ac.nz/equityhub

Te Papa Manaaki Campus Care

A safe confidential and free service that supports the wellbeing and safety of everyone at the university.

We'll develop a tailored plan that works in the best interests of each individual. Students are assigned a single case manager who connects them with internal and external services that can support their needs. Students can be referred by others or reach out directly to seek advice.

auckland.ac.nz/campus-care

Orientation

The University arranges an Orientation programme for new international students in Semesters One and Two. International Orientation is designed to welcome you and give you all the information you need about studying and living in Auckland. In addition, the University also provides Faculty Orientation for all new students. It is an opportunity to meet new people and make friends at a range of social and cultural activities.

The Business School provides an Orientation for Business coursework masters students in Quarters Two and Four.

auckland.ac.nz/orientation

UniGuides

UniGuides are current students from the University who can help you find your way around campus and answer your questions during the first few weeks of the semester. You will meet your UniGuide at your Faculty Orientation Day. UniGuides also host regular hang outs during the semester so you can relax and meet other first years.

auckland.ac.nz/uniguide

Spirituality and Religious Support

We know faith, religion or belief can be an important part of life for many international students within our university community.

Our multi-cultural team of Christian and Muslim Chaplains are professional members of The Aotearoa New Zealand Tertiary Chaplaincy Association ANZTCA. We are qualified in pastoral care (CPE) and Theology. We bring lots of life experience. We are here for you.

auckland.ac.nz/spirituality

Career Development and Employability Services (CDES)

The CDES team are here to support your successful transition into work. Build your employability skills and confidence through our online tools, workshops, and special support programmes for international students. These include the popular Workplace Insights Programme. You can also join us for industry, employer networking events and annual career expos.

auckland.ac.nz/cdes

Childcare

There are four Early Learning services on campus, offering places for children aged three months to six years. These childcare services are chargeable and in demand, so apply early.

auckland.ac.nz/parentingsupport

University Health and Counselling Service (UHCS)

We offer primary health services across multiple campuses. Our experienced General Practitioners (GPs), nurses and counsellors are trained to help and support the diverse medical needs of our students. You can enrol to get assistance with physical health, sexual health, mental health, immunisations and much more.

auckland.ac.nz/studenthealth

Ratonga Hauātanga Tauria Student Disability Services (SDS)

We welcome international students with disabilities. It is important to check that the University is able to meet your specific requirements, as the type and level of support with disabilities at our University may differ from those at your home university. Contact us early so we can discuss your support requirements.

auckland.ac.nz/disability

Personal development

You can complement your academic achievements by getting involved in a number of co-curricular activities that build a range of skills.

Clubs and societies

Joining a club is a fantastic way to make friends, participate in activities that interest you and learn things outside of the lecture theatre. Passionate about a cause? Or do you play an instrument? Keen on kayaking or just want to find your community? We've got a club for that!

There are over 250 clubs on campus – make sure you check them out at the Clubs Expo at the start of each semester.

auckland.ac.nz/clubs

Leadership and volunteering

Throughout the year, we offer many opportunities to build up your work record and experience, as well as growing your leadership skills during your time at the University. Become a UniGuide, a Resident Adviser or a Social Media Content Creator; join the AUSA Buddy programme; or work as part of the UniCrew or Wellbeing Ambassador team. These and other roles can be a great way to meet new people, get to know the city, network and develop new skills.

auckland.ac.nz/leadership-and-volunteering

International student support

Being away from home is a challenge in itself. To assist you, we have specialised support services available to help you with a range of issues, including immigration, health and wellbeing, financial advice, accommodation and personal support.



[auckland.ac.nz/
international-student-support](http://auckland.ac.nz/international-student-support)



Entry requirements

We welcome applications from international students with New Zealand or overseas qualifications.

English language proficiency

If you are an international applicant and your first language is not English, you will need to provide evidence of your English language proficiency. You can demonstrate this by achieving the required score in an approved English language test, such as IELTS, or successfully completing a University of Auckland English Language Academy (ELA) pathway programme.

If you are attending secondary school in New Zealand, please see the next section.

The table below shows the minimum scores for admission to the University. However, some of our undergraduate and postgraduate programmes have higher requirements.

Minimum English Language Proficiency Requirements

	IELTS	TOEFL (iBT)
Undergraduate	Overall score of 6.0 and no bands below 5.5	Overall score of 80 and a writing score of 21
Postgraduate	Overall score of 6.5 and no bands below 6.0	Overall score of 90 and a writing score of 21

More qualifications are accepted, please see the pages below for more information.

Undergraduate English-language requirements

auckland.ac.nz/ug-english-reqs

Postgraduate English-language requirements

auckland.ac.nz/pg-english-reqs

Calculating your GPA/GPE

Grades or marks achieved at the University of Auckland are calculated as a Grade Point Average (GPA).

Grades or marks achieved through prior study at other institutions are converted into a Grade Point Equivalent (GPE) at the University of Auckland.

To convert your grades into a GPE, use our GPE Calculator:*

auckland.ac.nz/gpe-calculator

**The online calculator provides an indicative guide only and does not guarantee admission to the University.*

International students at New Zealand secondary schools

To be admitted to the University, school leavers must have a University Entrance qualification based on NCEA, Cambridge International, IB or another recognised, equivalent qualification. Some programmes will also require you to have taken specific subjects and gained minimum credits in those. Others have entry requirements such as a portfolio, audition or interview.

You can see the requirements online.

auckland.ac.nz/school-leaver-entry

English language requirements

If you are entering the University on the basis of qualifications other than NCEA, Cambridge International or IB taken in New Zealand, you must meet a specified score in IELTS or an alternative approved English test.

auckland.ac.nz/programmes

If you have completed a qualification not listed on our website, we will assess your application on its merits.

International students outside New Zealand

If you are an international student, you must meet the University Entrance standard, individual programme requirements and English-language requirements.

Programme entry requirements

Our various programmes have different entry and English language requirements.

You can find out more on the programme page online.

auckland.ac.nz/programmes

You can see the more about requirements online for different study levels.

Undergraduate: auckland.ac.nz/ug-entry-reqs

Postgraduate: auckland.ac.nz/pg-entry-reqs

Doctor of Philosophy:

auckland.ac.nz/phd-entry-reqs

Find out more
auckland.ac.nz/is-entry



Essential information



Student visas

The New Zealand Government requires all international students to possess a valid study visa that covers their enrolment period at the University of Auckland. Your study visa should accurately reflect the programme and institute of study you have chosen. Before starting your student visa application, ensure you have been admitted to your programme, have sufficient financial support, and have gathered all necessary documents. For detailed information, please visit the Immigration New Zealand website. immigration.govt.nz

Eligibility for health services

Most international students are not entitled to publicly-funded health services while in New Zealand. If you receive medical treatment during your visit, you may be liable for the full costs of that treatment if you do not have appropriate insurance. Full details are available through the Ministry of Health. health.govt.nz

Health and travel insurance

All international students are legally required to have appropriate health and travel insurance. The University has a recommended policy that meets New Zealand government requirements. When you enrol you will automatically be covered by Studentsafe Inbound University, and the insurance premium will be added to your student account. You will receive details with your offer of admission letter from the University. auckland.ac.nz/is-insurance

Accident insurance

The Accident Compensation Corporation (ACC) provides accident insurance for all New Zealand citizens, residents and temporary visitors to New Zealand (which includes international students), but you may still be liable for other medical and related costs. acc.co.nz

Employment during study

You may be allowed to work part-time for up to 20 hours a week, and full-time during all scheduled holidays. There are no restrictions on the hours you can work if you are enrolled in a research masters or doctoral degree programme (PhD). For the most current information on working conditions under a student visa, please refer to Immigration New Zealand. immigration.govt.nz

Approximate weekly living costs 2025 (\$NZ) ¹		
	Fully-catered University residence	Room in a shared private house*
Accommodation	\$490-\$560	From \$220 Private studio from \$350 ²
Electricity	Included in residence fee	\$42
Internet	Free use of UoA WiFi available in each Hall	\$18
Mobile phone plan	\$15	\$15
Household insurance ³	From \$12	From \$12
Food	Included in residence fee	From \$200
Transport (bus or train from nearby suburbs)	Residences are walking distance from campus	\$21.50 with student discount ⁴
Gym membership	Included in residence fee	From \$14
Estimated weekly costs	From \$575	\$600

Post-study work visa

On completion of your University of Auckland degree, you may apply for a post-study work visa for up to three years. During the period of that work visa, you may be eligible to apply for residency if you meet Immigration New Zealand requirements. auckland.ac.nz/post-study-work-visa

Important dates

Summer School 2026
Monday 5 January – Wednesday 18 February
Semester One 2026
Monday 2 March – Monday 29 June
Semester Two 2026
Monday 20 July – Monday 16 November



Application closing dates

To see the application closing dates for undergraduate programmes, visit auckland.ac.nz/ug-closing-dates
To see the application closing dates for postgraduate programmes, visit auckland.ac.nz/pg-closing-dates

Fees

Find out the cost of tuition, how to pay your fees and more.



1. These costs are approximate, and are as at May 2025.
2. Based on 1 bedroom
3. Based on insuring household items
4. One-zone return, five days per week using an AT Hop Card

How to apply

For more information on how to apply as an international student, visit:

auckland.ac.nz/international-application

To apply, go to:

auckland.ac.nz/apply

If you have any questions about the application process, please contact a Student Hub.

City Campus Student Hub

Te Herenga Mātauranga Whānui General Library
Building 109
5 Alfred Street
Auckland

auckland.ac.nz/studenthubs

Questions: auckland.ac.nz/askauckland

Email: studentinfo@auckland.ac.nz

Phone: 0800 61 62 63

International: +64 9 373 7513

Fax: +64 9 373 7405

Our overseas representatives

The University of Auckland has several official representatives in overseas offices. These organisations can give you information about the University of Auckland or help you submit an application. For a complete list of official representatives, please visit:

auckland.ac.nz/int-agent-search

The Education (Pastoral Care of Tertiary and International Learners) Code of Practice 2021

The University of Auckland has agreed to observe and be bound by the New Zealand government's Code of Practice for the Pastoral Care of Tertiary and International Learners. Copies of the Code are available in six languages at:

www2.nzqa.govt.nz/tertiary/the-code

iStudent Complaints

istudent.org.nz

Costs

All costs are shown in New Zealand dollars and are expressed inclusive of Goods and Services Tax (GST), if applicable.

Privacy

The University of Auckland undertakes to collect, store, use and disclose information in accordance with the provisions of the Privacy Act 2020. Further details of how the University handles your information are set out in a brochure (*The Privacy Act and You*) available from the Student Hubs or by calling +64 9 373 7513.

Disclaimer

Although we make every reasonable effort to ensure accuracy, the information in this document is provided as a general guide only and is subject to alteration. All students enrolling at the University of Auckland must consult its official document, the current University of Auckland Calendar*, to ensure they are aware of and comply with all regulations, requirements and policies.

Publication date: June 2025.

*Provides information about academic programmes and courses together with academic statutes and regulations governing admission, enrolment, fees and examinations.



Useful web addresses

The University of Auckland homepage

auckland.ac.nz

The University of Auckland Calendar

auckland.ac.nz/calendar

Student Hubs

auckland.ac.nz/student-hubs

Information for international students

international.auckland.ac.nz

University of Auckland representatives overseas

auckland.ac.nz/int-agent-search

Entry requirements

auckland.ac.nz/is-entry

Online application

auckland.ac.nz/international-application

Important dates

auckland.ac.nz/dates

Discover profiles

profiles.auckland.ac.nz

Accommodation

accommodation.ac.nz

Study Abroad and Exchange

auckland.ac.nz/studyabroad

Connect with us:



facebook.com/UniversityofAklId



www.instagram.com/universityofauckland



@universityofauckland



x.com/AucklandUni



youtube.com/UniofAuckland



**UNIVERSITY OF
AUCKLAND**
Waipapa Taumata Rau
NEW ZEALAND

Postal address
International Office
The University of Auckland
Private Bag 92019
Auckland 1142
New Zealand

Questions: auckland.ac.nz/askauckland
Email: studentinfo@auckland.ac.nz
Phone: +64 9 373 7513

International Office
The University of Auckland
Alfred Nathan House
24 Princes Street
Auckland 1010
New Zealand

international.auckland.ac.nz