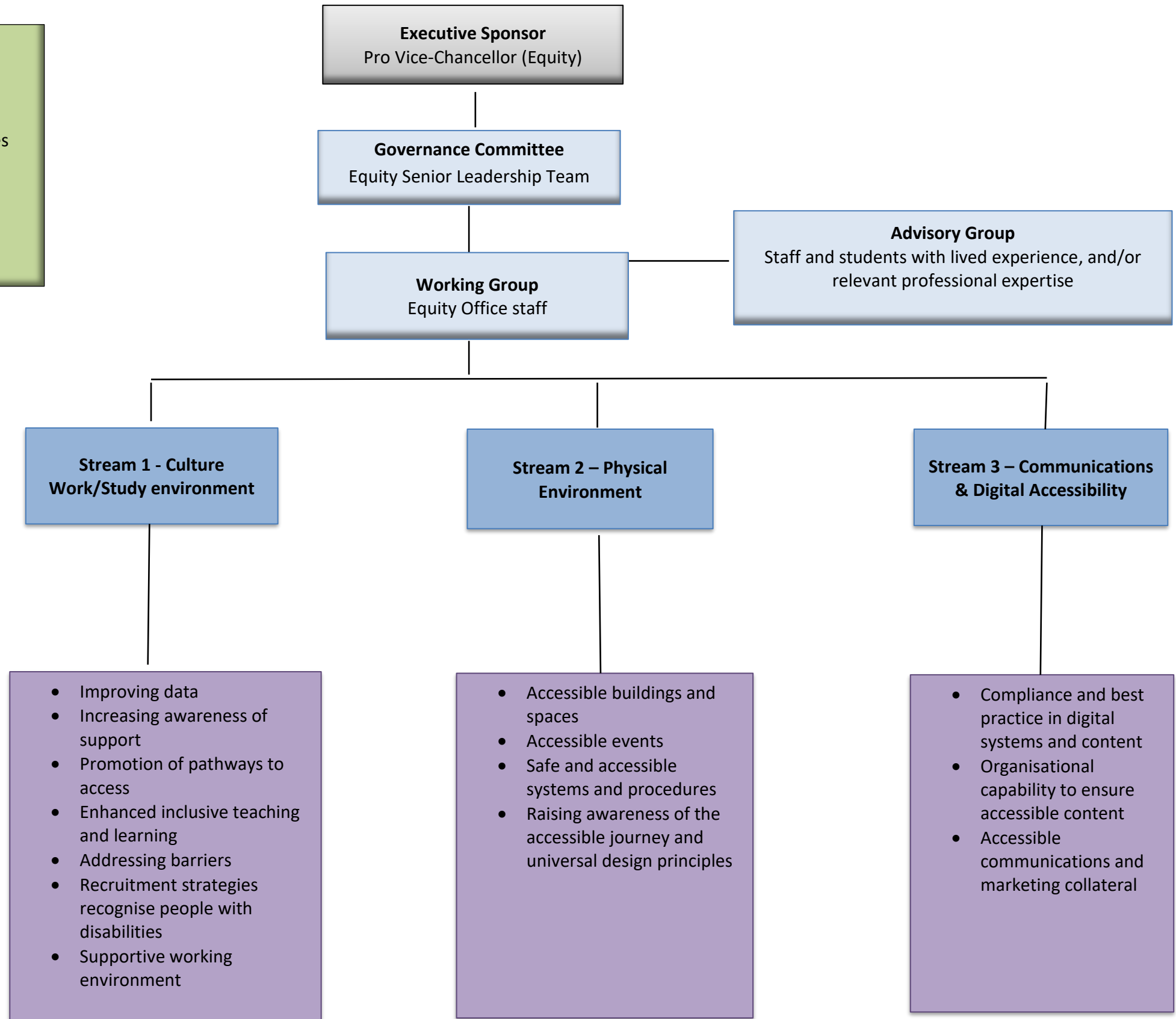


Disability Programme 2017-2020

Vision: A safe, inclusive, accessible and equitable work and study environment where all students and staff with disabilities can achieve their potential

- Desired Outcomes:**
- Safe, inclusive and accessible environments
 - Increase the proportion of staff disclosing disabilities
 - Increase proportion of students with disabilities attending the University
 - Successful students with disabilities
 - Successful staff with disabilities

- Key University stakeholders:**
- Equity Office
 - Digital Office/Information Technology Services
 - Property Services
 - Planning & Information Office
 - HR



- Stream 1 - Culture Work/Study environment**
- Improving data
 - Increasing awareness of support
 - Promotion of pathways to access
 - Enhanced inclusive teaching and learning
 - Addressing barriers
 - Recruitment strategies recognise people with disabilities
 - Supportive working environment

- Stream 2 - Physical Environment**
- Accessible buildings and spaces
 - Accessible events
 - Safe and accessible systems and procedures
 - Raising awareness of the accessible journey and universal design principles

- Stream 3 - Communications & Digital Accessibility**
- Compliance and best practice in digital systems and content
 - Organisational capability to ensure accessible content
 - Accessible communications and marketing collateral