

1

CITY LANDING GUIDES

LONDON



Key industries



Insider hints



Essential apps



Know before you go



Advice from local alumni



The University of Auckland and Kea, an organisation supporting New Zealanders living overseas, have combined forces to provide you with this City Landing Guide. It is packed with insider knowledge essential to know before you take flight.

London is a true melting pot of cultures with more than 300 languages spoken throughout the city. According to the Global and World Cities Research Network it is the most important city in the world and the second most visited, after Bangkok. London is a fast-paced city saturated in history and has more than 3,000 parks and open spaces to enjoy.



Key industries

- Around 92 percent of jobs in London are in the services sector.
- Health, financial services, education, information and communication technologies and business services make up a large chunk of employment opportunities available.
- There is also a strong presence in broadcast media, advertising and marketing, legal and accounting, air transport and private security.
- London is the political, economic and cultural capital of Britain.



Insider hints

- Purchasing an Oyster card will buy you travel access on the underground, river boats, buses and cable cars, reducing the need to carry cash.
- Escalator etiquette is to stand on the right or walk on the left. Standing on the left and blocking those trying to walk ahead is frowned upon.
- Most tube stations are wifi enabled – just connect to the Virgin Media WiFi service in the ticket hall when you first enter a tube station and you should be good to go.
- For a fantastic view without a price tag, head to the Sky Garden. Be sure to book ahead because places fill up fast.



Essential apps

Visit London

Official city guide with offline maps.

Cityplanner

Transport app that includes a journey planner, updates for commuters and more.

Hidden London

Great for those who want to explore off the beaten track to discover a hidden world beyond the popular tourist attractions.

BigDish

Make last minute reservations at restaurants for up to 50 percent off your food bill.

Stagedoor

Lists lesser-known theatre venues and offers discounts on a range of performances.

Dropit

Perfect for avid shoppers. Customers purchase a pass which enables them to drop their shopping off at set locations, which will then be delivered to their accommodation, so they don't have to carry it home.



Know before you go

Visas

New Zealanders aged between 17–30 can apply for a two-year working holiday visa for the UK. Those with British ancestry can apply for a patriality visa if they wish to stay for longer than two years.

Employment

Hiring intentions are expected to fall by four percent every year as a result of the UK leaving the European Union (EU). London's current unemployment rate is 4.9 percent, slightly higher than the UK's overall rate of unemployment at 4.3 percent. While it's estimated that the region gained around 60,000 jobs each year in recent times, almost 75 percent of these were self-employment jobs which are more prominent in London. Employers are naturally wary until more certainty returns to the marketplace.

Recently the UK instituted the National Living Wage which entitles workers aged 25 years and over to receive a minimum hourly rate of at least NZ\$15.16 (£8.21) and those aged between 21-24 NZ\$14.22 (£7.70).

Salaries in London attract a top-up payment referred to as London weighting to reflect the higher costs associated with living in the city. The weighting component varies depending on the type of employer, an individual's location in London and their occupation. The average salary for London is NZ\$85,000 (£44,000) and according to estimates London is expected to add around 50,000 jobs annually in the next two decades with the professional, real estate, scientific and technical sectors accounting for a third of these jobs.

Living costs

While the fall in the pound that followed Britain's decision to leave the EU has made life more expensive for British people, London may now actually be more affordable for expats compared to many other global cities.

In a recent survey for living costs around the world, London ranked 30th, the lowest it has been for more than 20 years. The British capital is now 30



percent cheaper for expats than Paris and nine percent cheaper than Dublin.

A monthly tube pass will set you back NZ\$250, monthly utilities will cost around NZ\$270 and expect to pay NZ\$9.50 for a pint of beer and NZ\$6.60 for a three litre bottle of milk.



Where do Kiwis flock to?

Alumni networking events are hosted by the University of Auckland across the world. Be sure to keep your contact details up to date so we can notify you of upcoming networking opportunities in your city.

The University also has an international network of Volunteer Alumni

Coordinators (VACs) who organise informal events and provide advice for alumni who are new to the area.

To update your details go to alumni.auckland.ac.nz/update and to find your local VAC contact go to alumni.auckland.ac.nz/networks

Checking out Kea's website, keanewzealand.com, is another excellent way to connect with fellow Kiwis. From events, job listings, business networks and more, Kea supports a prospering community around the globe.

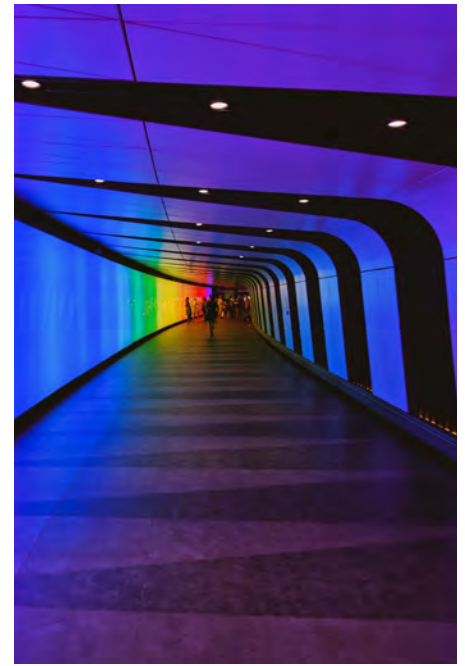
There is also a Facebook group which has a wealth of information available for Kiwis living in London. From tips on securing a flat to monthly meet-ups, Kiwis in London is worth checking out: www.facebook.com/LondonKiwis/



Top tips

Open a bank account before you leave New Zealand if you intend on living in London.

For an authentic experience, forget the main tourist spots. Head to the markets at London Fields, Columbia Rd and Brixton. Hang out in a park, enjoy a Sunday roast at a local pub and experience the nightlife in East London.



Advice from local alumni

“Go to Bradley’s Spanish Bar! It’s a hidden gem and a great place for a post-work, pre-going out pint if you’re in the city centre. It’s on Hanway Street just behind Oxford Street. With its fantastic real jukebox, it draws an eclectic, interesting crowd.”

– Dave

“I love wandering around Soho, the tiny lanes feel totally ‘London’ – crusty and ancient compared to how new everything is in New Zealand. Even though it’s cleaned up a lot, there’s still all sorts of people out on the streets and a tonne of little shops, pubs, cafes or theatres to discover – and you can drink in the parks.”

– Steph

“Nopi’s food is created fresh on the premises and is a total find for vegetarians. They also do fish and meat dishes. You’re best to stick with the starters and try lots of them rather than choosing a main. Nopi is central in London’s West End.”

– Max

“Check out Liberty London, a department store in a beautiful Tudor-revival building and then explore Carnaby street and all of the boutiques afterwards.”

– Nicky

“Join the British Museum as a member and get treated to members only evenings with free admission to exhibitions and extra themed events like lectures and storytelling.”

– Sally



Instagrammable locations

- Neal’s Yard
- Chalcot Crescent
- King’s Cross light tunnel
- God’s Own Junkyard
- Palm Vaults



Please note the information in this guide is intended as general information only.