

FINDING A SUPERVISOR | 2021



Ms Piata Allen

p.allen@auckland.ac.nz

Piata is currently involved in developing online content for both Initial Teacher Education and the National Digital Readiness Programme, which includes:

- Online learning programmes for English medium and Māori-medium pre-service Kaiako, in-service Māori-medium kaiako and NCEA programmes for ākonga
- The use of show and tell software and mobile technology to support mathematical communication in Māori-medium pāngarau classrooms.

www.education.auckland.ac.nz/people/profile/p-allen



Dr Helene Connor

h.connor@auckland.ac.nz

Helene's research interests include:

- The exploration of constructions of identity and multi-ethnic identity
- The intersections between gender, ethnicity and cultural representation; narrative and auto/biographical research
- Māori feminism, mana wahine Māori and women of colour feminism and research on aspects of mothering
- Indigenous and settler relations, New Zealand colonial history.
- 19th century literature and the lives of Victorian women novelists, particularly from the North of England, such as Geraldine Jewsbury, Elizabeth Gaskell and the Brontë sisters who wrote about the 'Woman Question'.

www.education.auckland.ac.nz/people/profile/h-connor



Mr Hēmi Dale

hemi.dale@auckland.ac.nz

Hēmi is currently developing a teacher handbook for the Tikanga ā Iwi learning area. His research interests include:

- The development of the Māori medium curricula
- The Tikanga ā Iwi learning area
- Bilingualism, biliteracy and teaching through the medium of te reo Māori.

www.education.auckland.ac.nz/people/profile/h-dale



Lincoln Dam

lincoln.dam@auckland.ac.nz

Lincoln's research interests include:

- The ethics and politics of Migrant-Indigenous relations
- Te Tiriti o Waitangi and Migrant communities
- Biculturalism and multiculturalism in Aotearoa-New Zealand
- Asian philosophies and mātauranga Māori
- Asian New Zealanders

www.unidirectory.auckland.ac.nz/people/lincoln-dam



Dr Maia Heteraka

m.heteraka@auckland.ac.nz

Maia is interested in Indigenous, qualitative research approaches that contribute to social justice in education practice, pedagogy and policies. Her particular research interests include:

- Understanding ways traditional Indigenous knowledge can impact on, and provide solutions to contemporary issues
- Connecting to powerful Indigenous and creative methodologies and methods within communities
- Clarifying the intricate relationship between education policies and strategies, and Indigenous knowledges
- Historical realities that continue to connect and influence across socio-political and socio-ecological spaces

www.education.auckland.ac.nz/people/profile/m-heteraka



Associate Professor Te Kawehau Hoskins

tk.hoskins@auckland.ac.nz

Te Kawehau is primarily engaged in qualitative social and educational research in:

- The politics and ethics of indigene and settler relations
- Multicultural and bicultural education
- The Treaty of Waitangi in educational governance, policy and practice with a focus on issues connected to School: Māori community relationships and Māori community participation.

www.education.auckland.ac.nz/people/profile/tk-hoskins



Professor Alison Jones

a.jones@auckland.ac.nz

Alison's current research focuses on educational relationships between Māori and Pakeha, both today and in the period prior to the Treaty of Waitangi. Her last writing project was about Tuai, from Ngare Raumati in the Bay of Islands, who travelled to England in 1818 and witnessed the Industrial Revolution. More recent projects focus on research relationships between Māori and Pākehā with a particular interest in the apparently trivial details of day-to-day engagements.

www.unidirectory.auckland.ac.nz/profile/a-jones



Dr Peter Keegan

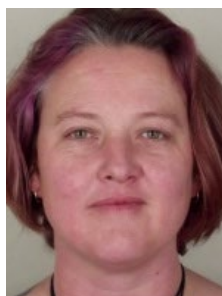
p.keegan@auckland.ac.nz

Peter's research interests include:

- Quantitative approaches to research and data
- Changes in the structure of Māori language and efforts to revitalise Māori and indigenous languages, in educational and community contexts
- The achievement of Māori and minority students, and Māori/indigenous literatures.

www.education.auckland.ac.nz/people/profile/p-keegan

FINDING A SUPERVISOR | 2021



Ruth Lemon

ruth.lemon@auckland.ac.nz

Ruth is currently a PhD candidate with a focus on the Hangarau (Māori-medium technology) curriculum. Her research interests include:

- Māori-medium educational contexts
- Curriculum development
- Second language acquisition and its implications in Māori-medium settings
- Game development and design for educational settings

www.education.auckland.ac.nz/people/profile/ruth-lemon



Professor Stephen May

s.may@auckland.ac.nz

Stephen's research interests traverse education, sociology and political studies. His areas of research interest are:

- Bilingual education
- Critical ethnography
- Indigenous language revitalisation
- Language policy
- Language rights
- The politics of multiculturalism

www.education.auckland.ac.nz/people/profile/s-may



Dr Hinekura Smith

hlj.smith@auckland.ac.nz

Hinekura is a Kaupapa Māori and Mana Wāhine education researcher interested in the reclamation and revitalisation of Māori language, culture and identity through education, creative practice and decolonising methodologies. Other interwoven research interests include:

- Developing Māori and Pasifika research collaborations across the Moana
- Supporting Māori and Indigenous postgraduate and early career research, development and academic pathways
- Māori and Indigenous arts practices as method and methodology

www.unidirectory.auckland.ac.nz/people/profile/hlj-smith



Dr Sophie Tauwehe Tamati

t.tamati@auckland.ac.nz

Tauwehe's research focuses on TransAcquisition Pedagogy (TAP) for emergent bilinguals in minority and migrant groups around the world. Her research includes:

- The use of TAP for the biliterate teaching of academic English to raise the reading achievement levels of Māori medium students and bilingual immigrant students in English medium schools
- The development and evaluation of translingual digital environments in Virtual Reality Apps as pedagogical tools for Second Language Acquisition.

www.education.auckland.ac.nz/people/profile/t-tamati



Associate Professor

Tony Trinick

t.trinick@auckland.ac.nz

Tony's research interests are focused on a number of areas in mathematics education. This includes:

- Researching curriculum development and indigenous language contexts
- Ethnomathematics, student achievement in Māori medium mathematics and the factors that support and impinge on student progress
- Bilingualism and bilingual education.
- Tony has collaborated with mathematics education researchers in Colombia, Peru and Chile.

www.education.auckland.ac.nz/people/profile/t-trinick



Associate Professor

Melinda Webber

m.webber@auckland.ac.nz

Melinda Webber has published widely on the nature of Māori identity and her research interests include:

- Adolescent social psychology
- Racial ethnic identity construction
- Māori gifted learners and Māori student success
- Qualitative research methodologies.

www.unidirectory.auckland.ac.nz/profile/m-webber



Dr Ema Wolfgramm-Foliaki

ea.wolfgramm@auckland.ac.nz

'Ema's work has focused on the achievement of Pasifika and indigenous peoples in higher education.

Her work champions the role and contribution of cultural methodologies and culturally sustaining pedagogies in the retention and achievement of Pasifika and indigenous people in higher education. In addition, 'Ema also explores and research the experiences of students who are first in their family to study at university (FiF). She is available to supervise/co-supervise students within the faculty and across different disciplines.

www.unidirectory.auckland.ac.nz/profile/ea-wolfgramm

For more information on finding a supervisor and FindaThesis:

www.education.auckland.ac.nz/supervision-register



EDUCATION AND SOCIAL WORK
TE PUNA WĀNANGA