



UNIVERSITY OF
AUCKLAND
Waipapa Taumata Rau
NEW ZEALAND

Tauira Māori Prospectus 2023

Information for Māori students, their whānau, schools and communities



Ko Waipapa Taumata
e karanga nei ki te m
kai i te mātauranga

Nau mai, haere mai,
ki te whare whakairo

We are Waipapa Taumata Rau, we greet, we call to the many who desire the sustenance of knowledge.

Welcome, come forth and fasten to the carved meeting house, Tāne-nui-a-rangi.

Rau mātou, e mihi nei,
ārea e hiahia ana ki te

herea mai tōu waka
o Tāne-nui-a-rangi

Nau mai, haere mai ki Waipapa Taumata Rau



*Ruia ngā kākano i te Moana-nui-a-Kiwa
Wherahia ki te moana rongonui, herea ngā
waka ki te pou whakairo ka tū ki Waitematā i
raro i te marumarū o ngā maunga tapu*

*Ko Waipapa te manawa whenua o te whare
wānanga nei*

*Nau mai, haere mai, whakatata mai ki a mātou,
ki Tāmaki Makaurau*

E aku nui, e aku rahi,

Koutou ngā uri o Tuperiri, o Tāmaki herenga
waka, tēnā koutou katoa.

Ko Huruiki te maunga

Ko Whakapara te awa

Ko Ngāti Hau te hapū

Ko Ngāpuhi te iwi

Ko Whakapara te marae

Ko Te Kawehau Hoskins tēnei

I acknowledge the work of all those before us
who have demonstrated courageous leadership
for Te Ao Māori. E mihi kau ana ki a rātou.

Our mission is to ensure that Māori ways of
thinking, being and doing thrive at the University
and we are well on this journey. Achieving this
means the knowledge produced by us will
positively contribute to whānau, community
and iwi-led development. And flourishing Māori
communities are central to a sustainable,
thriving and socially-just Aotearoa New Zealand.

He kai kei aku ringa

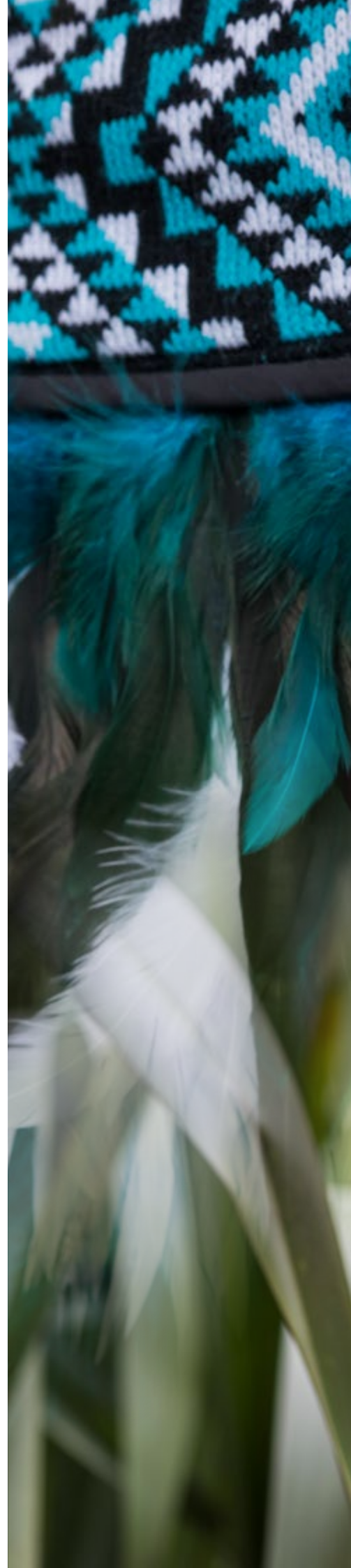
The means to flourishing are in my hands

Nāku noa,

Nā Associate Professor Te Kawehau Hoskins

Ngāti Hau, Ngāpuhi

Ihonuku | Pro Vice-Chancellor Māori





Contents

We are here to help you	6
Tatauranga Māori	8
Te Ao Māori ki Tāmaki	9
Ngā Taura Māori	10
Māori student groups	11
How will I get in?	12
Undergraduate Targeted Admission Schemes (UTAS)	15
Success on campus	16
Other pathways to study	19
Scholarships and financial assistance for Māori students	21
Te whakapōtaetanga o ngā taura Māori – Celebrating Māori excellence	22
It's time to apply	23

Front cover:

Haukapuanui Vercoe, Matariki Bennett and Sonny Vercoe

We are here to help you

Kia ora, we value all our Māori students and whānau, and we will do everything we can to help you succeed. Te Tiriti o Waitangi – the Treaty of Waitangi is New Zealand’s founding document, and the University is committed to the rights and obligations articulated in Te Tiriti. We are committed to promoting Māori presence and participation in all aspects of University life, and we encourage teaching, learning and research in a range of fields important to Māori.



Ihonuku Māori

Te Kawehau Hoskins

Ngāti Hau, Ngāpuhi
BA, MA, PhD
tk.hoskins@auckland.ac.nz



Kaiarataki

Michael Steedman

Ngāti Whātua Ōrākei, Ngāti Whātua,
Te Uri o Hau
BSc
Email: m.steedman@auckland.ac.nz



Kaikōkiri Rautaki Māori

Catherine Dunphy

Taranaki
BPhEd, BA, PGDipED
c.dunphy@auckland.ac.nz



Tumuaki o Te Papa Ako o Tai Tokerau

Dennis Matene

Ngāpuhi, Ngāti Rangī, Ngāti Moerewa,
Ngāti Mutunga ki Wharekauri
DipTchg, PGDipSportMgt, MMgmt
d.matene@auckland.ac.nz



Poutiaki Rangahau Māori

Jeremy Hema

Ngāti Paoa, Te Rarawa
BSc, LLB
g.hema@auckland.ac.nz



Kaitohutohu Tautoko Taurira

Mereana Toki

Ngāpuhi, Ngāti Pīkiao, Ngāti Whakaue
BA
m.toki@auckland.ac.nz



Waipapa Marae Taurima

Moeahi Kerehoma

Te Aitanga-a-Māhaki, Ngāti Whātua
Ōrākei, Te Whakatōhea, Te Whānau-a-
Apanui, Tūhoe, Te Rarawa, Ngāi Takoto,
Ngāpuhi
BA
moeahi.kerehoma@auckland.ac.nz



Kaiwhakaurunga Māori – Māori Schools Advisor

Mariah McCarthy-Wilson

Ngāpuhi
m.mccarthywilson@auckland.ac.nz



“Mātauranga has always been a valuable taonga to my whānau. To us, mātauranga is the key to opening the doors to opportunities that will eventually allow us to give back to our people, our whānau and our iwi.”

“I am passionate about Māori health. Māori are continuously faced with health-related inequities, due to deeply rooted systematic, personalised and internalised racism, stemming from colonisation. There is not enough aroha and manaakitanga in the health system for our people. We need more passionate, empathetic and understanding Māori health professionals, to tend to our people who are inequitably unwell and misunderstood. When I have gained my qualifications, I will return home to Te Tai Rāwhiti, to work with my iwi and local community.”

“I chose to study at the University of Auckland because of its accolades and because it is close to my whānau. I am fortunate to have grown up with Te Ro Māori me ōna tikanga, and with a strong standing in my ahurea. These are things that keep me grounded and allow me to walk confidently in both Te Ao Māori and Te Ao Pākehā.”

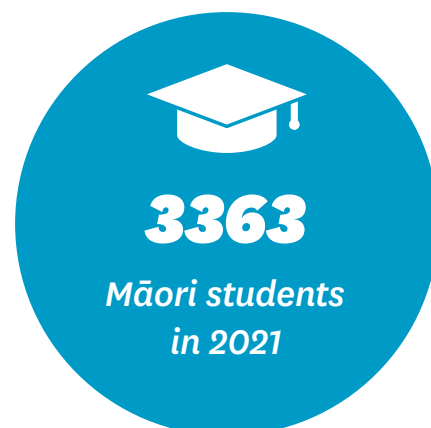
Stacy-Ria Te Kurapa-King

Rongowhakaata, Tūhoe, Ngāpuhi

Bachelor of Medicine and Bachelor of Surgery, expected to complete in 2024.

Tatauranga Māori

Student enrolments	2019	2020	2021
Equivalent Full-Time Students (EFTS)	2324	2318	3363
By type of course (EFTS)			
Non-formal	68	83	95
Undergraduate	1890	1842	1969
Postgraduate	294	304	370
Doctorate	82	89	103



238 Professional Staff
152 Academic Staff

Programme enrolments by Faculty (EFTS)	2019	2020	2021
Arts	452	460	472
Business	255	245	260
Creative Arts and Industries	108	109	119
Education and Social Work	310	287	301
Engineering	157	154	165
Law	162	174	191
Medical and Health Sciences	479	480	519
Science	414	406	473
University Programmes	44	48	66
Total	3,346	3,252	3,183

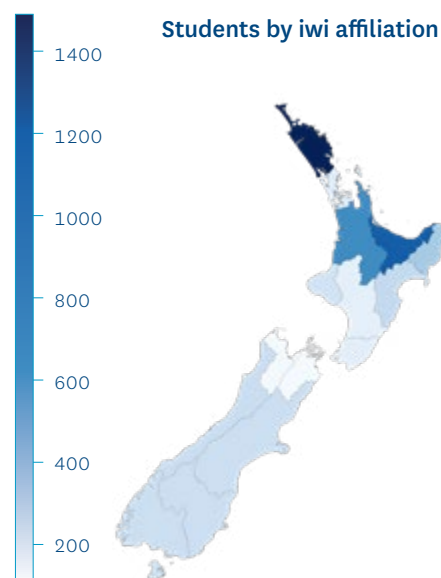
Note:

- Each programme is reported towards its primary owning faculty. For example, a student enrolled in BA/ BSc conjoint degree would be reported towards the Science faculty only.
- Students enrolled in more than one qualification during the year are counted in each qualification.

Research centres working closely with tangata whenua
CORE – Ngā Pae o te Māramatanga
James Henare Māori Research Centre
Mira Szászy Research Centre for Māori and Pacific Economic Development
Tōmaiora Māori Health Research Group
Uniservices and Te Pūnaha Matatini

Qualification completion	2019	2020	2021
Doctoral	11	17	17
Postgraduate	358	310	333
Bachelors	384	384	384
Diplomas	0	7	5
Certificate	39	53	66
Total	792	771	805

Note: Completed vs awarded qualifications:
Students may complete their studies but opt not to graduate or be awarded the qualification until a later date. It may also be that the students missed the cut off date to apply to graduate.



Note: In cases where a student has more than one iwi affiliation, all affiliations for the student are represented.

Map Template: Stats NZ. Source: UoA UDW

Te Ao Māori ki Tāmaki

Ko Tāne-nui-a-Rangi te whare whakairo

Ko Reipae te wharekai

Ko Waipapa te marae

Ko Ngāti Whātua Ōrākei te ahi-kā-roa

Kei konei tō whānau hōu, hei manaaki, hei tiaki
i a koe. Nō reira, rukuhia te mātauranga ki tōna
hōhonutanga, tukuna te tao kia rere, he kai
tērā e matapoporetia ana.





Ngā Tauira Māori

Ko Ngā Tauira Māori te rōpū e hāpai ana i ngā tauira Māori o Waipapa Taumata Rau.

Māhea noa te kite i ngā taumahatanga nui ki runga i ngā tauira, ā, ko tā mātau he tautoko, he akiaki, he poipoi hoki i a tātau anō kia eke ki te pae o angitū i ngā mahi katoa. Kāore tēnei aroha, otirā, tautoko nui e mutu pū ki ngā mahi o te whare wānanga, heoi, ka wherahia ki ngā āhuatanga a kui mā, a koro mā, ā, ko ngā tikanga, ko ngā hītori, otirā, ko tō tātau reo rangatira hoki ka whāngaia ki ā tātau tauira. He haumarutanga, he āhurutanga, otirā, he taiao e whakatinana tāhi āi tātau i ngā moemoeā katoa a o tātau tūpuna Māori.

Hūtia te rito o te harakere Kei hea te kōmako e kō? Kī mai ki ahau; He aha te mea nui o te Ao? Māku e ki atu; he tangata, he tangata, he tangata.

Ngā Tauira Māori is the official Māori Student Association of Waipapa Taumata Rau | University of Auckland. We uplift and support Māori students as they travel all the pathways they aspire to. We seek to preserve and develop the use of tikanga and Te Reo Māori within the University and amongst our tauira. We strive to support Māori students in their formal education and in their awareness and understanding of their surrounding world. We aim to inspire our tauira to influence their environments through an understanding of who they are as tangata whenua.

Māori student groups

When you join Waipapa Taumata Rau, there are a number of Māori student associations you can join that offer cultural and social communities of support in various spaces around campus. Ngā Taurira Māori is the official Māori student voice on campus.

South Pacific Indigenous Engineering Students (SPIES)

The South Pacific Indigenous Engineering Students (SPIES) association was formed by and for Māori and Pacific Engineering students. We aim to encourage and support Māori and Pacific students into all fields and disciplines of Engineering.

spies@auckland.ac.nz

facebook.com/SPIESuoa

Te Mana Pakihi

Te Mana Pakihi (TMP) is a club for undergraduate Māori Business students. We offer year-round social and cultural activities plus a range of networking events with industry contacts and major corporates. We provide a stimulating environment in which to exchange ideas and put business theory into practice.

temanapakihi@gmail.com

Te Rākau Ture (TRT)

TRT is the association for Māori Law students. Our common room at the Law School, Te Ako o te Tūi, is where we meet and study together. We have a range of academic, social, sporting, and cultural events throughout the year, including study wānanga and networking opportunities with other members of the Māori Law Association.

facebook.com/TRTUOA

te-rakau-ture@auckland.ac.nz

Manaaki

Manaaki is a student group that aims to facilitate relationships and networking opportunities for Māori within the Faculty of Health and Medical Science. By fostering relationships and networking, Manaaki seeks to nurture the next generation of Māori health professionals and leaders to ensure a connected Māori workforce is established.

manaaki.executive@gmail.com

Nesian Indigenous Science Student Association (NISSA)

NISSA aims to support the cultural and social wellbeing of Māori and Pasifika indigenous students within the Faculty of Science. We hope to promote academic success through the Science Tuākana programme and promote science in Māori and Pasifika communities.

uoa.nissa@gmail.com



How will I get in?

A university qualification can provide an opportunity to give back to your family and wider community. Get in touch with our team today to make the first step.

We offer:

- Hundreds of career options
- More than 50 undergraduate programmes from certificate to bachelors level
- More than 200 subjects across Arts, Business and Economics, Creative Arts and Industries, Education, Social Work, Engineering, Law, Medicine and Science
- Around 80 conjoint degree programmes
- Opportunities tailored for Māori students

auckland.ac.nz/study-options

The basics

Why is it important to choose the right subjects in Year 11?

Some University of Auckland programmes require you to have taken specific subjects and gained minimum credits in certain subjects. Some programmes have other requirements such as a portfolio, audition and/or interview. For example:

- To gain entry to the Bachelor of Education (Teaching) programme, you will need an NCEA rank score of 150 and will be required to have an interview, provide referees' reports, and agree to a police and safety check
- To gain entry into the Bachelor of Engineering (Honours) programme, you will need an NCEA rank score of 260, with 17 external Level 3 credits in Calculus and 16 external Level 3 credits in Physics

How do I get accepted to the University of Auckland?

To study at the University of Auckland, you must have a University Entrance qualification and be selected into a programme.

To increase your chances of being accepted, from Year 11 you should:

1. Take the right subjects. These subjects must be selected from the approved NZQA list. nzqa.govt.nz
2. Wherever possible, take Achievement Standards rather than Unit Standards. (The more Achievement Standards you have, the better.)
3. Aim for Excellence (4 points) and Merit (3 points) rather than Achieved (2 points).
4. Make sure you meet the University Entrance Standard. (See right.)

How your rank score is calculated

You will be allocated a rank score based on your best 80 credits at Level 3 or higher over a maximum of five approved subjects, weighted by the level of achievement attained in each set of credits.

If you achieve fewer than 80 credits, the rank score will be based on those credits you have gained at Level 3 over a maximum of five approved subjects and weighted by the level of achievement.

- The rank score will be calculated by awarding the following points for up to 24 credits in each approved subject taken at Level 3. The maximum rank score is 320.

Excellence	4 points
Merit	3 points
Achieved	2 points

- Credits obtained in any required subjects do not have to be among the best 80 credits used for ranking purposes.

- NCEA Level 3 credits achieved in previous years may be counted towards the 80 best credits used for ranking purposes.
- Level 3 subject requirements for a specific programme may be met in Year 12.
- You are strongly encouraged to take achievement standards as preparation for University study.

What if I don't get the guaranteed rank score needed for the programme I applied to?

If you don't get the guaranteed rank score, you could apply for a place under the University's Undergraduate Targeted Admission Schemes (UTAS).

Find out more about UTAS on page 15. To learn more about alternative pathways for domestic Māori students see page 19.

International Baccalaureate (IB) and Cambridge International

If you have gained either of these qualifications, you will have different entry requirements and should visit our website.

auckland.ac.nz/entry-requirements

Example of how a rank score for NCEA Level 3 is calculated				
Subject	Standard type	Results	Calculate	Rank Score
English	Achievement	6 Excellence 6 Merit 16* Achieved	6 x 4 points 6 x 3 points 12* x 2 points	66
History	Achievement	8 Excellence 10 Achieved	8 x 4 points 10 x 2 points	52
Physics	Achievement	24 Merit	24 x 3 points	72
Calculus	Achievement	4 Excellence 3 Merit 8** Achieved	4 x 4 points 3 x 3 points	25
Statistics	Achievement	7 Merit 10** Achieved	7 x 3 points	21
Economics	Achievement	6*** Achieved	Not counted***	Nil
Rank score				236

The University Entrance Standard

You will be qualified for entrance to New Zealand universities in 2023 if you have obtained:

- NCEA Level 3
- Approved subjects: 14 credits in each of three approved subjects at Level 3
- Literacy requirement: 10 credits at Level 2 or above, made up of 5 credits in reading and 5 credits in writing
- Numeracy requirement: 10 credits at Level 1 or above, made up of achievement standards in a range of subjects; or all three numeracy unit standards 26623, 26626 and 26627

For more information on University Entrance, please see NZQA's website. nzqa.govt.nz/ncea

*Maximum 24 credits per subject. Any points above this limit are excluded. **Not included as only best 80 credits used in calculation of rank score. ***Only five subjects are included in the calculation.

What is a conjoint degree?

You can earn a conjoint degree by studying for two different degrees at the same time. When you complete the conjoint degree, you will have gained two qualifications faster than if you'd studied for them individually.

A conjoint degree can give you a distinct advantage in the job market. It's also the opportunity to mix two different areas of interest, so you don't have to give up one for the other.

For example:

- A Bachelor of Engineering with a Bachelor of Laws
- A Bachelor of Commerce with a Bachelor of Science
- A Bachelor of Health Sciences with a Bachelor of Arts

If you're applying for a conjoint programme, you must meet the admission and selection requirements for both programmes of study. Higher rank scores will be required.

conjoints.ac.nz

Academic English Language Requirement (AELR)

You must meet the AELR if you are admitted to a University of Auckland bachelors degree programme and you are:

- A domestic student
- An international student applying on the basis of a New Zealand secondary school qualification
- An international student applying on the basis of results at another New Zealand tertiary institution

How do I meet the Academic English Language Requirement?

The AELR may be met through your entry qualification or through satisfactory completion of an approved course in your first 12 months of study.

Meeting the Requirement through your entrance qualification

School qualifications

For those applying on the basis of NCEA results: You will meet the Requirement if you have gained the University Entrance Literacy Standard and a minimum of 17 credits in English

at Level 2 and/or 3.* This does not apply to applicants who meet the University Entrance Literacy standard in Te Reo.

For those applying on the basis of Cambridge International results: You will meet the Requirement if you have gained the University Entrance Literacy Standard and a minimum of a D grade in an English course at AS or A Level.

For those applying on the basis of International Baccalaureate (IB) results: You will meet the Requirement if you have gained the University Entrance Literacy Standard and a minimum of 26 points.

Previous study completed elsewhere

For those applying on the basis of results at another tertiary institution, you will meet the Requirement if you have:

- Satisfied the AELR through NCEA, Cambridge International or IB qualifications as outlined above, or
- Passed 60 points or more of study at a tertiary institution and have achieved an acceptable result in DELNA** testing.

auckland.ac.nz/aelr

*English for Academic Purposes standards US 22750 and US 22751 will contribute to meeting the AELR.

**For information regarding DELNA, please see delna.auckland.ac.nz



"As a year 13 student I had the chance to visit Auckland on the programme Whāia te Pae Tawhiti. It was there that I was given an insight into life at the University of Auckland. I have always had a knack for mathematics, so I knew I wanted to study Engineering.

"Before moving here I was fearing a lot of things. City life seemed scary. But my sisters live in Auckland too and I feel safe when they are near me. After moving from Gisborne to Auckland, I realised how special it is to be a young Māori male. A culturally diverse place like Auckland makes me appreciate my heritage so much more. In my first year, I got my certificate in rongoā, I joined in kapa haka, I learnt my whakapapa and now I want to do my masters in Māori engineering.

"The Māori Students Association (NTM) has been a huge part of my University journey. This family has fed me, clothed me, housed me, inspired me and always been concerned for my learning. They have given me a place to study – or if I didn't feel like studying, a place just talk to buddies.

"My biggest inspiration is my late whakairo teacher. Throughout high school he was always on my team, even funding me to come here and pursue my dreams. He is a perfect example of who I want to be. My family is my backbone, I cannot wait to take this degree back home."

Paraone Luiten-Apirana

Ngāti Hikairo

Gisborne Boys' High School
Bachelor of Engineering (Honours)/Bachelor of Commerce Conjoint,
Expected to complete in 2022.

“I grew up sheltered in the bosom of my iwi, Te Arawa, and much of my tertiary success can be attributed to the never-ending support and love of my whānau, hapu and iwi.”

“Moving up to Auckland was a huge shock to the system, and I would not have had such a smooth transition if I had not been introduced to Ngā Tauria Māori (NTM). NTM helps connect tauria Māori studying at the University of Auckland through educational, social and cultural events run throughout the academic year. Through NTM, and these events, I have made life-long relationships.”

“Hineahuone – the Māori Students common space – and Waipapa Marae have become a home away from home. I cannot emphasise enough how significant it was to have spaces I felt comfortable being my authentic Māori self.”

“I decided to come to the University of Auckland not only because it is ranked number one in New Zealand, but also because I was fortunate enough to receive a scholarship (the Māori Academic Excellence Scholarship).”

“My dream is to establish a business, run by Māori, for Māori, where the profits go back to Māori through educational grants and scholarships. I want to show our people that we do not have to work for Pākehā organisations to become successful, or wealthy. We have the necessary tools within our kete.”

“I stand unequivocally and unapologetically proud as a strong Māori woman who hails from the sulphur city that is Rotorua. What I have accomplished is because of the tautoko, aroha, and never-failing drive of my iwi.”

Whāia te iti kahurangi ki te tūohu koe me he maunga teitei.

Seek the treasure you value most dearly: if you bow your head, let it be to a lofty mountain.

Ehara taku toa i te toa takitahi, engari he toa takitini.

My success should not be bestowed onto me alone, as it was not individual success but success of a collective.

Te Rina West

Te Arawa, Ngāti Whakaue, Tūhourangi, Ngāti Wahiao, Ngāti Kea Ngāti Tuara, Ngāti Tūwharetoa, Ngāti Awa

**John Paul College
Graduate Bachelor of Arts/Bachelor of Commerce Conjoint**



Undergraduate Targeted Admission Schemes (UTAS)

UTAS reserve a number of places in the University's undergraduate programmes for applicants who have achieved the University Entrance (UE) standard but have not met the general entry requirements for the programme of their choice. UTAS applicants are required to meet specific eligibility criteria.

The UTAS Policy is designed to ensure that the University provides equal educational opportunities to eligible Māori and Pacific students, and students from other under-represented groups who have the potential to succeed at our world-ranked University.

UTAS students are expected to meet the same high academic standards as all other undergraduate students at the University.

UTAS places are available to eligible:

- Māori applicants
- Pacific applicants
- Applicants with disabilities
- Applicants from low socio-economic backgrounds (For UTAS purposes, that means school leavers* from decile 1–3 schools.)
- Applicants who have themselves or whose parents/primary guardian(s) have been granted refuge in New Zealand

UTAS is not available to international students.

What support is available for UTAS students?

We provide a range of support for students who are admitted through UTAS, including:

- Orientation
- Help with course selection
- Pastoral support
- Academic tutorials
- Tuākana Learning Communities for Māori and Pacific students
- Student Disability Services

The University of Auckland has taken all steps to ensure that the information on these pages is correct, but please note that changes may occur. For the most up-to-date information call **0800 61 62 63** or visit **auckland.ac.nz/utas**

Contact us about UTAS

To find out if you are eligible for admission via UTAS, please visit the UTAS website

auckland.ac.nz/utas

Or contact us directly

studentinfo@auckland.ac.nz

0800 61 62 63

Enquiries about students with disabilities

disability@auckland.ac.nz

or call **+64 9 923 8808 ext 82936**

* UTAS applicants from low socio-economic backgrounds must be school leavers.



Success on campus

We have a variety of ways of working with you and your whānau to succeed. These range from learning services, study spaces, mentors and advisers to University whānau-away-from-home who are dedicated to helping our Māori students.

Ngā pūnaha taunaki i ngā tauira Māori

Tuākana

Tuākana Learning Communities is a collective of Māori and Pacific people, allies, programmes and services which ensure a students' sense of indigeneity is compatible with academic success. As partnership between learners, teaching, academic and support staff, the learning community includes the provision of whānau/aiga based tutorial, workshops, study groups and networks that resonate with the community.

auckland.ac.nz/tuakana

“Tuākana is building relationships and connections while utilising the different strengths of the collective”

– 2022 Tauira

Te Tumu Herenga Libraries and Learning Services

This programme is coordinated by a team of Māori and Pacific Learning Advisers dedicated to advancing Māori and Pacific scholars' academic skills through research and culturally-informed teaching and learning practices. They provide a friendly and professional service at undergraduate and postgraduate levels. They create a learning environment that values, respects and encourages Māori and Pacific scholars and helps them to thrive. Te Fale Pouāwhina offers wānanga, workshops, study groups and advisory sessions to promote the academic excellence and fulfil the aspirations of Māori and Pacific scholars.

Matthew Tarawa

Ngāi Te Rangi, Ngāti Ranginui, Ngāi Tāmanuhiri
Email: m.tarawa@auckland.ac.nz
Phone: +64 9 923 8608

Mona O'Shea

Haveluloto, 'Uiha, Tonga
Email: m.oshea@auckland.ac.nz
Phone: +64 9 923 8970

Career Development and Employability Services (CDES)

CDES has a designated Māori Career Development Consultant who provides specialised services tailored to meet the career development needs of Māori students.

CDES offers career workshops, expo events, personalised services and online tools. These assist students to identify the opportunities available while equipping them with knowledge, understanding and skills that can help them compete in the world of work.

There are also exciting employer engagement events that take place throughout the year. These are a great opportunity for students to explore various industries and jobs of interest.

cdes.auckland.ac.nz

Students with children

The University has six early childhood centres on the City, Epsom and Grafton campuses, offering places to children aged from three months to five years. Of these six centres, two are Kōhanga Reo: Te Puna Kōhungahunga on Epsom Campus and Te Kōhanga Reo o Hineteiwaiwa, which is based at Waipapa Marae on the City Campus. Our Kōhanga Reo aim to deliver quality learning experiences that encourage our mokopuna to be active learners using te reo me ngā tikanga Māori me ngā akoranga o te ao whānui hoki. Our dedicated parent spaces and breastfeeding spaces across campuses also provide facilities for caregivers and children.

auckland.ac.nz/parentingsupport



"I was very lucky to have grown up in my home town of Taupō. However, upon finishing high school, I was ready for a faster paced environment with more diverse opportunities. This was the main reason I decided to study at the University of Auckland.

"I pursued Māori Studies and Psychology. This gave me a chance to reconnect with aspects of my Māoritanga that I had not connected with through school. It is my favourite department at the University of Auckland because of the warm nature of all of the Māori staff who are there. Psychology was a subject I had no idea about before coming to University. I instantly took a huge interest in this area and the sorts of things it is concerned with, especially in relation to mental health. My newfound interest in this area was thoroughly accommodated by the University's School of Psychology and I look to complete more study in this area one day.

"My whānau have had the biggest impact on my success. Although they are not in Auckland, they have always made sure that I have everything I need up here to succeed academically, and also to feel comfortable and happy while doing so. The next major impact has been the Tuākana programme. Tuākana and the people in the programme have made me feel more than comfortable in what can be a daunting context, especially being a Māori from a small town moving to the city and studying at the largest university in Aotearoa.

"The last factor that has boosted my success has been the Māori Studies lecturers. They have always been the most supportive when it comes to my assessments and also with planning out my career. I was very lucky to have completed a summer research scholarship with the James Henare Māori Research Centre in my last year of study. This helped me apply a lot of the skills I had developed through my degree in a setting that I really enjoyed. I currently work for this centre across a range of research projects that have a Te Ao Māori focus. I wouldn't have been able to get this job without the skills and teachings that my degree gave me."

Kua tawhiti kē to haerenga mai, kia kore e haere tonu. He nui rawa ō mahi, kia kore e mahi tonu.

You have come too far not to go further, you have done too much not to do more.

Tā James Henare

Rhieve Grey

Ngāti Tūwharetoa, Ngāti Manunui, Ngāti Porou

Tauhara College

Bachelor of Arts majoring in Māori Studies and Psychology. Graduated 2019.

“Tōia ki Waipapa allowed me the opportunity to find my place within the University. I was introduced to other Māori staff and students and found a new university whānau.

“I chose to do Tōia ki Waipapa as I felt it would give me a place to belong. I wanted to make friends and build relationships with other rangatahi and tuākana who had similar upbringings, experiences and aspirations as myself.

“It definitely gave me a taste of what University life will be like in Semester One.

“I became familiar with the campus and the work ethics that were needed to achieve the results that I wanted. It also allowed me to make connections and relationships going into the semester, which made settling in a lot easier.

“I found the lectures and tutorials very stimulating and eye opening. They encouraged me to reconstruct the way I think by unlearning a lot of the incorrect information I was taught about being Māori while I was growing up.

“I was the first in my whānau to enter University, and the programme gave me a sense of grounding about who I am and why I’m taking these next steps for. As a Māori/Niuean student, I not only carry the weight of my own goals and aspirations for the future, but I am also carrying my tupuna, whānau and community with me.”

Calem Stewart-Leaton

Iwi: Ngāpuhi, Tainui and Niue

Howick College

Bachelor of Arts and Bachelor of Laws



Other pathways to study

We have various alternative pathways to bridge the gap between secondary school and the University of Auckland.

Toiā ki Waipapa

Tōia ki Waipapa is for all Māori school leavers who may be considering a tertiary pathway. The programme allows taira the opportunity to take a university course over the summer which can be used towards their degree. The programme also offers mentoring and workshops to better prepare students for the transition.

Students who have not yet formally applied to the University will get guidance and assistance to do so. In addition to this, Tōia ki Waipapa is also open to Māori students who did not achieve University Entrance or get an offer to the University.

We take a positive and friendly approach to ensure we give you the best chance for success.

Tōia ki Waipapa runs during Summer School, from early January to mid-February. We provide:

- Whanaungatanga – a new university whānau
- On-campus experience
- Academic preparation
- An opportunity to take a university course (Māori 130)
- Peer mentoring
- Appropriate learning support

[instagram.com/toia_uoa](https://www.instagram.com/toia_uoa)

In addition, you can apply for an accommodation scholarship to live on campus throughout the 6-week programme.

auckland.ac.nz/tkw



“Ko ngā painga o te whakawhitinga moata, tuatahi, ko te tūtaki ki ngā tāngata hōu, tuarua, ko te whakariterite i a koe mō te whare wānanga e mārama rawa ai koe ki ngā āhuatanga o te whare wānanga e tau ai koe.”

“Ko taku tino hiahia kia moata taku whakawhitinga ki te ao pakeke, ki te whare wānanga anō hoki. I pātata hoki, nā reira i māia au ki te whakamātau mehemea he pai rānei ki au te whare wānanga.”

“Ko ngā mea tino pārekareka ki au nei, ko ngā mahi whakawhanaunga, me te puta i taku anga i roto i tēnei taiao rere kē, nā tēnei i tipu mai ētahi hononga ki ētahi o aku tino hoa.”

“I āwhinatia nuitia au e tēnei kaupapa; i taku taenga mai ki te whare wānanga, mai i tētahi ao, ahurea, hāpori Māori ki tētahi whare wānanga Pākehā rawa atu, i uaua rawa ki au i ngā wiki tīmatanga. He mea pai tēnei i te mea i taea tēnei e au. Mehemea i tīmata au i te marama o Māehe, he rere kē anō te tīmatanga ki roto ia Tōia ki Waipapa me te wāhanga tuatahi o te tau, ā, e kore rawa au e noho mai ki te whare wānanga i tē wāhanga tuatahi, ka wehi rawa.”

Teremaanu Hall

Iwi: Ngāti Manawa, Ngāti Maniapoto, Tūhoe

Kura: Te Kura Kaupapa Māori o Hoani Waititi Marae
Bachelor of Commerce

Other pathways to study cont.

We have various alternative pathways to bridge the gap between secondary school and the University of Auckland.

Hikitia Te Ora – Certificate in Health Sciences (CertHSc)

Hikitia Te Ora may be your best starting point towards a health career. This one-year programme provides Māori and Pacific students with the skills and content knowledge needed for health professional study in the Faculty of Medical and Health Sciences. If you're a school leaver or returning to study, the CertHSc can help strengthen your sciences, improve your academic writing and prepare you for success. Anyone wishing to be considered for the CertHSc must attend the Māori and Pacific Admission Scheme's (MAPAS) General Interviews.

0800 202 099
certificate@auckland.ac.nz

The University of Auckland Tertiary Foundation Certificate (TFC)

This full-time, one-year specialist foundation programme will help bridge your way into tertiary studies. The TFC helps you prepare for and enter the BA and BEd (Teaching), as well as the BSc and most other limited entry programmes, provided that you meet the entry grade requirement. Through the TFC you will gain a University Entrance qualification with which to apply for bachelors programmes at the University of Auckland and elsewhere. The TFC is delivered at City, Epsom, South Auckland and Tai Tokerau campuses.

+64 9 923 4145 or 923 7335
tfc@auckland.ac.nz
tfc.ac.nz

New Start

New Start will help you develop the confidence and skills for studying at University. You must be 20 years or over, be a New Zealand citizen or permanent resident, and have a good command of English. New Start is a realistic introduction to first-year study. These courses are part-time and provide a pathway into a range of undergraduate programmes at the University of Auckland.

- **New Start General NSGEN 47** will prepare you for an undergraduate degree in Arts, Business, Education and Social Work, or Law.
- **Mathematics Preparation for University NSMAT 14** is designed to be taken with New Start General NSGEN 47 to prepare you for entry into the University of Auckland's Business School. Both courses are compulsory for those who plan to gain admission from New Start to Business School.
- **Mathematics Fundamentals NSMAT 10** is a short, intensive course, taught on Saturdays in a workshop format. It's designed to prepare you for NSMAT 14.

If you apply for NSMAT courses, you'll need to sit a short assessment. Results from this assessment will be used to determine which course will suit your learning needs.

New Start students are not eligible for Studylink funding. If you're experiencing financial hardship, please apply for a New Start award.

New Start is offered at the City, South Auckland and Tai Tokerau campuses.

+64 9 923 7832
newstart@auckland.ac.nz
auckland.ac.nz/newstart

South Auckland Campus

The University now has a new location in central Manukau.

We offer foundation and preparation programmes, as well as a three-year primary teaching degree, the Bachelor of Education (Teaching), which has been delivered in South Auckland for the past 20 years. Many of our graduates continue to work in the area, contributing to the lives of local children.

For students living in the south, access to local courses and study spaces eases transport and travel challenges. The South Auckland Student Hub is there for all local University of Auckland students, providing academic and personal support, and IT and administration services. And our student commons provide study spaces during standard teaching hours as well as evenings and weekends.

You'll also be able to attend workshops, support groups, tutorials and discussion groups, as well as interacting with local community groups.

Scholarships and financial assistance for Māori students

Scholarship name	Eligibility	Duration	Value per annum	Application closing date
University of Auckland Top Achiever Scholarship	Exceptional academic performance, outstanding sporting, artistic, cultural and leadership achievements among domestic students wishing to enter a full-time undergraduate degree programme	1 year	\$20,000 comprising a guaranteed funded place in University of Auckland catered accommodation and two lump sum payments	19 August auckland.ac.nz/scholarships
University of Auckland Māori Academic Excellence Scholarship and University of Auckland Pacific Academic Excellence Scholarship	Exceptional academic performance and proven achievements in cultural and extracurricular activities among New Zealand Māori students and domestic Pacific students wishing to enter a full-time undergraduate degree programme	3 years	\$20,000 over three years. A guaranteed place in a University Hall of Residence in the first year of study and the balance paid as two lump sums in each of years two and three	19 August auckland.ac.nz/scholarships
University of Auckland Academic Potential Scholarship	Academic achievement, taking into account a number of factors that can impact on an individual's ability to participate at university	First 3 full-time years of an undergraduate degree programme	Comprising a total of \$20,000, \$10,000 or \$6,000 (Tiers 1, 2 and 3 respectively) over three years. A guaranteed place at a University Hall of Residence for Tier 1 in the first year of study and balance paid as two lump sums in each of years two and three. Tiers 2 and 3 will be paid in two lump sums each year.	19 August auckland.ac.nz/scholarships
AUEA Māori Engineering Pathway Award	Māori students in first year of full-time study for a Bachelor of Engineering (Hons)	1 year	\$2,500–\$10,000	1 November
Faculty of Education and Social Work Start Smart Merit Scholarship	Students entering their first year of an undergraduate degree in the Faculty of Education and Social Work	1 year	Up to \$2,500 pa each	17 October (Round 1) 1 February (Round 2)
Faculty of Education and Social Work Start Smart City of Sails Scholarship	Students who live beyond the Auckland metropolitan area entering their first year of an undergraduate degree in the Faculty of Education and Social Work	1 year	Up to \$5,000 pa each	17 October (Round 1) 1 February (Round 2)
Faculty of Arts Ngāti Whātua Ōrākei Scholarship	Beneficiaries of Ngāti Whātua Ōrākei enrolled full-time in an undergraduate or postgraduate Arts programme	1 year	Up to \$3,500	31 July
TeachNZ Scholarships (Ministry of Education)	For details, please refer to teachnz.govt.nz/scholarships		Varies	To be announced
Business School Māori and Pacific Tautoko Grants	Māori or Pacific students undertaking full-time undergraduate study in the Business School	1 year	Up to \$2,500	20 April
Kick Start Māori and Pacific Award	To assist first-year Māori or Pacific Bachelor of Engineering (Hons) students; based on academic results in final year of high school	1 year	Up to \$2,000	18 January
Frances Barkley Scholarship	Māori or Pacific students enrolling in their first year of undergraduate study towards a BSc majoring in Biological Sciences, Biomedical Science, Ecology or Marine Science	Up to 3 years	Up to \$5,000 tuition fees credit	1 November
360 International Award for Māori and Pacific students	Māori or Pacific students on 360 International exchange, assessed on cumulative GPA and personal statements.	1 semester exchange	Up to \$6,000	4 October for Sem One of following year 15 November for Sem Two of following year
Toi Uru Roa: The Paul Kelly Māori Undergraduate Scholarships	Māori students studying towards an undergraduate degree in Business and Economics	Up to 3 years	Up to \$8,000	15 April
Rewi Thompson Undergraduate Scholarship in Architecture	To support Māori students enrolling in a Bachelor of Architectural Studies	1 year	\$8,000	15 January
RTA Studio Award for Māori Architecture Students	Māori students enrolling in a Bachelor of Architectural Studies	Up to 5 years	\$2,000 pa	15 January
Faculty of Arts Auckland Schools Scholarship	First year of a BA or conjoint degree in Faculty of Arts for students from decile 1–4 Auckland schools, based on academic merit and service or leadership	1 year	Up to \$5,000	15 January
Bachelor of Design Game-Changer Scholarship	Full-time students in Bachelor of Design; encouraging them to make beneficial societal changes	Up to 3 years	\$5,000	15 Nov
Bachelor of Design Award for Māori Students	Māori students enrolled full-time in a Bachelor of Design	1 year	\$5,000	15 Nov
Bachelor of Design Award for Pacific Students	Pacific students enrolled full-time in a Bachelor of Design	1 year	\$5,000	15 Nov
Jasmx Scholarship for Māori and Pacific Students	Māori or Pacific students enrolling in a BAS, based on academic achievement, and financial hardship. Applicants must state their ancestry or iwi affiliations.	Up to 5 years	\$5,000 pa	15 January
Māori Education Trust Tertiary Scholarships	For details, please refer to maorieducation.org.nz/			

Scholarship dates and details are subject to change. For the most up to date information visit auckland.ac.nz/scholarships



It's time to apply

So you've made your decision on what you want to study, and now it's time to apply. What do you need to do? It's a two-step process to apply for and enrol in your chosen programme.

First you need to apply

Go online and complete the Application for Admission. If you haven't already, you'll be asked to sign up for a new account. It's easy, and you'll soon be underway in making your application.

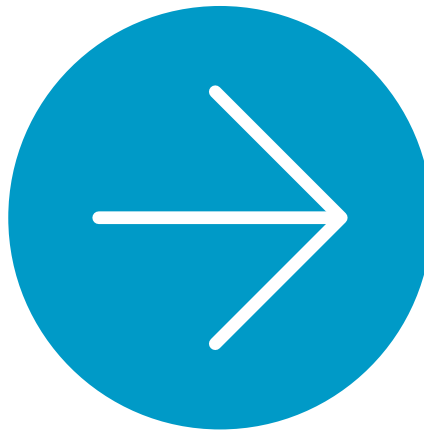
auckland.ac.nz/apply

Next you will receive an acknowledgement email asking you to provide supporting documents (and in some cases to complete other requirements*) before your application can be assessed.

Remember, you can apply for more than one programme. We'll be assessing your application, and you can check your application status online at any time. Be patient though – documents can take 3–4 weeks to process during peak admission periods. Some of your documents might take longer to process than others, despite being sent in at the same time.

If your application is successful, we'll email you an offer – normally from mid-January.**

To accept or decline this offer, log onto auckland.ac.nz/apply



Next you need to enrol

Once you've accepted an offer of place in a programme, you can enrol in a course. If you need some help with the enrolment process, take an online tutorial.

auckland.ac.nz/enrolment

Next you need to make sure you pay your fees! You'll find all the details at

auckland.ac.nz/fees

Stuck? At any point in the process you can find answers to your questions 24/7.

askauckland.ac.nz

Alternatively there's someone who can help during business hours.

0800 61 62 63 or studentinfo@auckland.ac.nz

Some late applications may be accepted after 2022 school results are received. It is advisable, however, to apply for all programmes that you might wish to enrol in before the published closing date. Multiple applications are acceptable, and all applications will be considered when 2022 academic results are available.

Closing dates for applications for admission in 2023

Medical Imaging (Honours); Medicine (for domestic applicants); Optometry; Pharmacy	1 October 2022
Law (Part II); Medicine (for international applicants); Social Work; Sport, Health and Physical Education; Special Admission; Summer School 2023	1 December 2022
Advanced Science (Honours); Architectural Studies; Arts; Commerce; Communication; Dance Studies; Design; Early Childhood Studies; Education (Teaching); Engineering (Honours); Fine Arts; Global Studies; Graduate Diploma in Teaching (Primary and Secondary); Health Sciences; Law (Part I); Music; Nursing; Property; Science; Urban Planning	8 December 2022

*For some programmes, you may be required to submit supplementary information (eg, a portfolio of work, referee reports, an online form) or to attend an interview/audition.

**If you are not offered a place in the programme(s) of your choice, you will receive an email outlining alternative options. Your final offer of place depends on two things: your admission to the University (which for school leavers may depend on your final school results) and your assessment by the relevant faculty.



**UNIVERSITY OF
AUCKLAND**
Waipapa Taumata Rau
NEW ZEALAND

Contact us with any questions:

Phone:

Auckland: 373 7599

Outside Auckland: 0800 61 62 63

Overseas: +64 9 373 7599

Email us: studentinfo@auckland.ac.nz

Web: auckland.ac.nz

We have recently opened five brand new centres where students and whānau will be welcome to visit and talk with our expert advisers:

City Campus:

General Library, Building 109,
5 Alfred Street, Auckland

Epsom Campus:

Sylvia Ashton Warner Library, Gate 3
74 Epsom Avenue (Parking at Gate 2)

Grafton Campus:

Philson Library, Building 503
Level 1, 85 Park Rd, Grafton
(Entry via the Atrium)

South Auckland Campus

Te Papa Ako o Tai Tonga:

6 Osterley Way, Manukau

Whangārei Campus

Te Papa Ako o Tai Tokerau:

Block, 13 Alexander Street, Whangārei



www.facebook.com/OurVillageOurKainga



[#universityofauckland](https://www.instagram.com/universityofauckland)

auckland.ac.nz